

# Priskurant - 2

Carl Keijser & c:o metallfabrik

*Vardagstryck Affärstryck 1800-tal 8:o*



National Library  
of Sweden

År 1888.  
1800-t.  
Metallind.  
skat.

Telegrafadress: Keijsers.

# PRIS-KURANT

FRÅN

## CARL KEIJSER & COMP.

### Metall-Fabrik

i

### VESTERÅS

188.....

*Emballage debiteras billigt. Betalningstid 3 månader.*

*Vid liquid inom 30 dagar lemnas ..... proc. rabatt.*

Stockholm, Central-Tryckeriet, 1888.



Carl Keilser & Co.

PARIS-KLAVIER

CARL KEILSER & COMP.

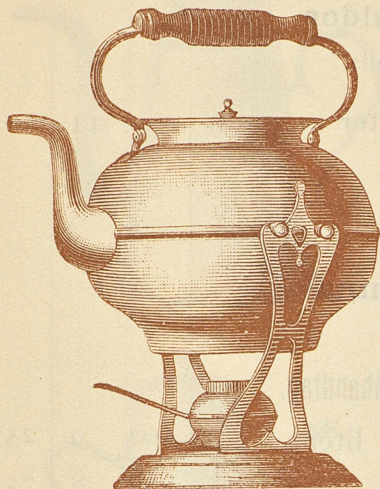
Mechanisch-Fabrik

WESTERAS



## Plåtmanufakturarbeten

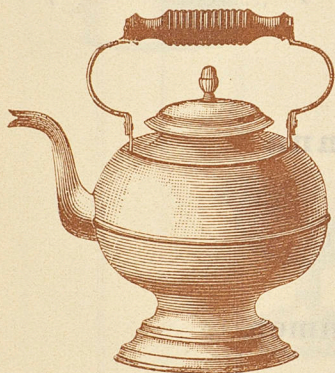
af Pinsback:



### Thekök

med  
balans och lampa.

	Pinsback pr st.		Förnicklade pr st.	
	Kr.	öre	Kr.	öre
N:o 1. 3.93 liter...	30	—	33	—
» 2. 2.6 » ...	28	—	31	—
» 3. 1.63 » ...	26	—	29	—



### Thekanna

med  
lös Bricka.

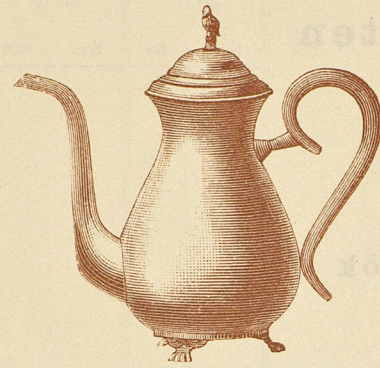
N:o 1. 1.95 liter...	7	75	9	75
» 2. 1.65 » ...	7	25	9	25
» 3. 1.3 » ...	6	75	8	75



### Kaffekannor

med  
kupiga sidor  
(ny modell)  
med  
metall- eller trähandtag.

N:o 1. 1.5 liter ...	10	—	12	—
» 2. 1.2 » ...	9	—	11	—



**Kaffekanna**  
med  
kupiga sidor  
(ny modell).

N:o 3. 1 liter .....

Pinsback pr st.		Förnicklade pr st.	
Kr.	öre	Kr.	öre
9	—	11	—
7	50	9	25
7	—	8	75
6	50	8	25
6	—	7	25
6	—	7	75
5	—	6	75
4	70	6	35
4	30	5	80
4	—	5	50
3	70	5	—



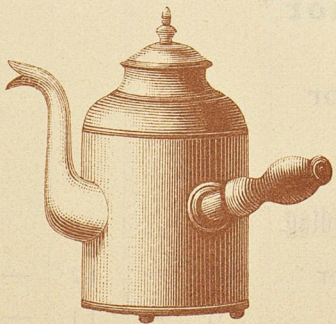
**Kaffekanna**  
med  
metall- eller trähandtag.

N:o 4. 1.95 liter ...  
» 5. 1.3 » ...  
» 6. 1.0 » ...  
» 7. 0.65 » ...



**Kaffekanna**  
med  
träskäft  
samma  
pris och nummer.

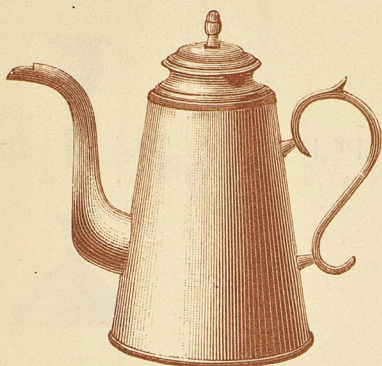
**Kaffekanna med raka sidor.**



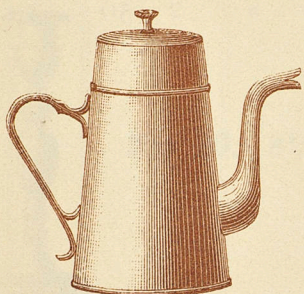
N:o 8. 1.95 liter.....  
» 9. 1.3 » .....  
» 10. 1.0 » .....  
» 11. 0.65 » .....  
» 12. 0.47 » .....  
» 13. 0.33 » .....



**Kaffekanna, konisk med metall-handtag.**



N:o 14. 1.3 liter...  
» 15. 1.0 » ...



N:o 16. 0.65 liter...



Socketerskål, större .....  
D:o, mindre .....

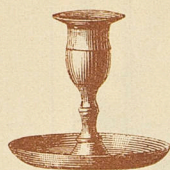


Gräddkanna .....

Pinsback pr st.		Förnicklade pr st.	
Kr.	öre	Kr.	öre
6	—	8	—
5	50	7	50
3	—	3	75
2	—	2	75
1	25	1	75
3	—	3	75

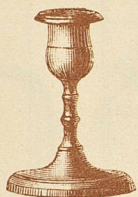
**Gjutna Manufakturarbeten.**

**Ljusstakar.**

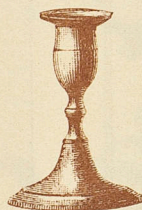


N:o 9.  $3\frac{7}{8}$  tum höga..... pr par

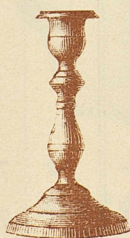
Röd komposition		Förnicklade	
Kr.	öre	Kr.	öre
2	70	3	70
2	50	3	50
2	70	3	70
3	—	4	—
3	50	4	50



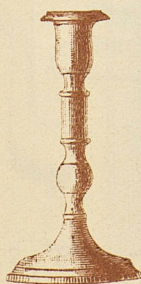
N:o 11.  $4\frac{3}{4}$  tum höga ... » »



N:o 12. 5 tum höga ..... » »

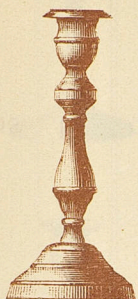


N:o 13.  $5\frac{7}{8}$  tum höga ... » »



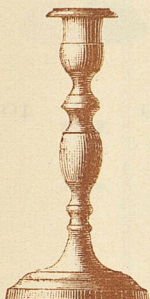
N:o 16.  $7\frac{1}{4}$  tum höga ... » »

Ljusstakar.

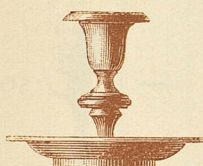


N:o 18.  $7\frac{7}{8}$  tum höga..... pr par

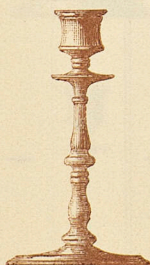
Röd komposition		Förnicklade	
Kr.	öre	Kr.	öre
4	20	5	20
4	20	5	20
4	50	5	50
4	—	5	—



N:o 20.  $8\frac{1}{8}$  tum höga..... » »

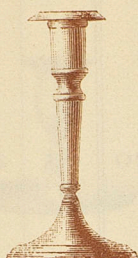


N:o 23. 4 tum höga ... » »



N:o 28. 7 tum höga ..... » »

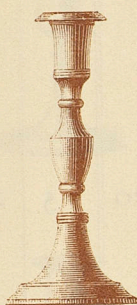
Ljusstakar.



N:o 36. 7 tum höga ..... pr par

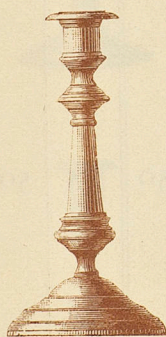
Röd komposition		Förnicklade	
Kr.	öre	Kr.	öre

3	50	4	50
---	----	---	----



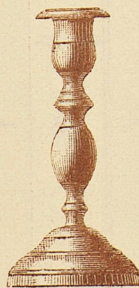
N:o 38. 8 tum höga ..... » »

4	40	5	40
---	----	---	----



N:o 39. 8<sup>5</sup>/<sub>8</sub> tum höga... » »

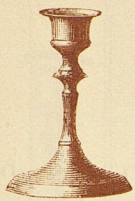
5	—	6	50
---	---	---	----



N:o 41. 7<sup>1</sup>/<sub>2</sub> tum höga... » »

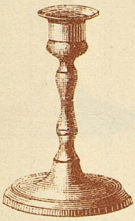
4	—	5	—
---	---	---	---

Ljusstakar.

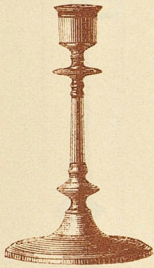


N:o 42. 4<sup>1</sup>/<sub>2</sub> tum höga... pr par

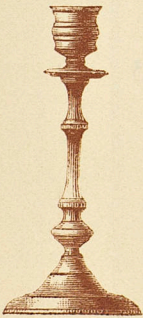
Röd komposition		Förnicklade	
Kr.	öre	Kr.	öre
2	20	3	—
2	30	3	30
3	70	4	70
5	—	6	50
3	20	4	25



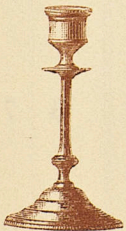
N:o 43. 5 tum höga ..... » »



N:o 44. 6<sup>1</sup>/<sub>4</sub> tum höga... » »

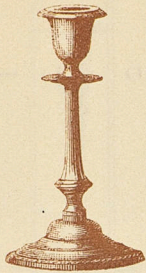


N:o 45. 8<sup>1</sup>/<sub>2</sub> tum höga... » »



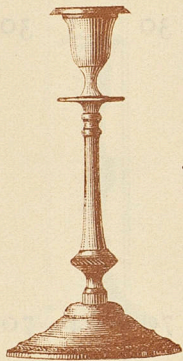
N:o 46. 5<sup>7</sup>/<sub>8</sub> tum höga... » »

Ljusstakar

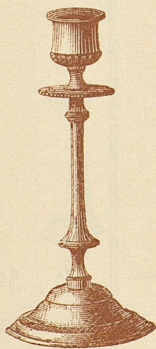


N:o 47. 7 tum höga ..... pr par

Röd komposition		Förnicklade	
Kr.	öre	Kr.	öre
4	50	5	60
6	—	7	20
4	75	6	—
3	—	3	75



N:o 48. 9<sup>1</sup>/<sub>4</sub> tum höga... » »



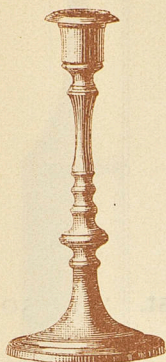
N:o 49. 8 tum höga ..... » »



af messing.

N:o 52. 7 tum höga ..... » »

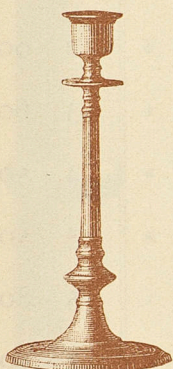
Ljusstakar.



N:o 53. 8<sup>1</sup>/<sub>4</sub> tum höga ... pr par

Röd komposition		Förnicklade	
Kr.	öre	Kr.	öre

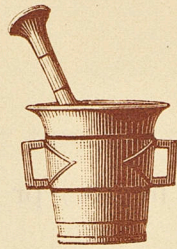
4	70	5	85
---	----	---	----



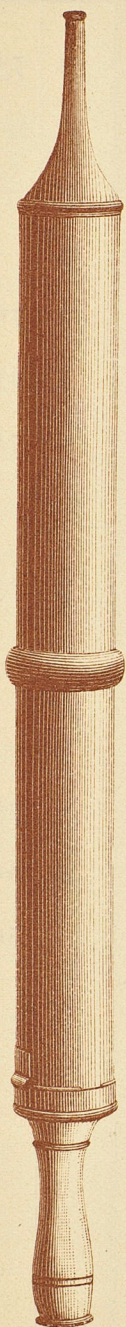
N:o 60. 8<sup>1</sup>/<sub>2</sub> tum höga ... » »

4	70	5	85
---	----	---	----

Mortlar.



			Kr.	öre
N:o	1.....	pr st.	1	30
»	2.....	» »	1	70
»	3.....	» »	2	10
»	4.....	» »	2	90
»	5.....	» »	3	60
»	6.....	» »	4	50
»	7.....	» »	5	50
»	8.....	» »	5	80
»	9.....	» »	7	50
»	10.....	» »	8	50



## Handsprutor



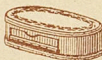

af  
messingsplåt med gjutna strålrör  
och sugare


pr st. 6 —

Lager efter modell eller ritning

	pr $\text{R}$	Kr.	öre
från $\frac{1}{2}$ $\text{R}$ till 2 $\text{R}$ .....	1	50	
» 2 » och deröfver .....	1	10	

## Snus- och Tobaksdosor.

	Messing		Förnicklade	
	Kr.	öre	Kr.	öre
 1:ma djupa med spegel ..... pr duss.	5	50	6	75
» låga » » ..... » »	4	75	6	—
» djupa s.k.V:åsm.spegel » »	4	75	6	—
» låga » » » » » »	3	75	5	—
2:da » » » » » » »	3	25	4	70
 Tunna OII större » » » »	2	50	4	25
» » små » » » »	2	20	3	75
 Ovala, med spegel..... » »	2	25	3	75
» utan spegel.				
 N:o 1 ..... » »	4	75	6	—
N:o 2 ..... » »	4	50	5	75
N:o 3 ..... » »	4	25	5	50
N:o 4 ..... » »	3	50	4	50
	Polerade			
<b>Af nysilfver.</b>				
Ovala N:o 2 ..... pr duss.	10	—		
» N:o 3 ..... » »	9	—		
1:ma, 4-kantiga ..... » »	15	—		
2:da » ..... » »	12	—		
» » små..... » »	9	—		

 Priserna å Snus- och Tobaksdosorna beräknas netto pr 3 mån. i parti.

3

2

