

Illustrated Catalogue

of

Corkcutting-Machines

invented by

Emil Boëthius

Ur KB:s samlingar

Digitaliserad år 2013



National Library
of Sweden



Illustrated Catalogue

of

Corkcutting-Machines

invented by

Emil Boëthius

Stockholm, Sweden



miss .

Illustrated Catalogue

of

Corkcutting-Machines

invented by

Emil Boëthius

Stockholm, Sweden



Illustrated Catalogue

Corkcutting-Machines

Manufactured by

Emil Höpff

Stockholm, Sweden



The
presented by
They su
the knives
produced, in
the power, a
They are
Korkfr
Kjåbe
Wicar
Wicar
A. Wic
A. Wic
Aktiebr
O. Her
The cork
any Brew
The mach
the Swedis
in flow, Vi

The following corkcutting-machines, which were partly-invented by me as early as 1864, have ever since been improved upon.

They surpass now all others in their capacity of maintaining the knives perfectly sharp; in the good qualities of the work produced; in their economizing the rawmaterial; in their productive power, and in their low working expenses.

They are in use in the following corkmanufactories:

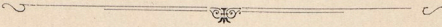
Korkfabriks Aktiebolaget, Stockholm,
Kjöbenhawns Dampkorkvarefabrik,
Wicander & Larson, Åbo, Finland,
Wicander & Larson, Libau, Russia,
A. Wicander, Stockholm,
A. Wicander, Gothenbourg,
A. Wicander, Berlin, (removed to Hamburg)
Aktiebolaget Boëthius' korkfabrik, Stockholm.
O. Herold & C:o, Lissabon.

The corkbrandmachine, N:o 9 in the Catalogue, ist at work at many Breweries in Sweden, Norway, Danemark and Finland.

The machines and their products have been awarded prices by the Swedish Royal Academy of science and at the Exhibitions in Moskow, Vienna, Malmö and Gothenbourg.



CATALOGUE.

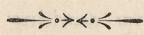


Cork Cutting Machinery.

Invented by

EMIL BOËTHIUS.

Stockholm, Sweden.



No 1.

STRIP CUTTING MACHINE, for dividing the bark into strips, the width of which will determine the length of the cork. The machine acts by means of a rotating circular knife, continually kept sharp by means of a self-acting grinding apparatus. The machine can therefore work without interruption for several weeks before the edge of the knife has to be re-adjusted. The width of the strips is determined by means of an adjustable guide, worked by a hand-wheel over a graded rule.


Capacity per 10 hours, strips for 80,000 to 120,000 corks, requiring 5 to 8 bales.

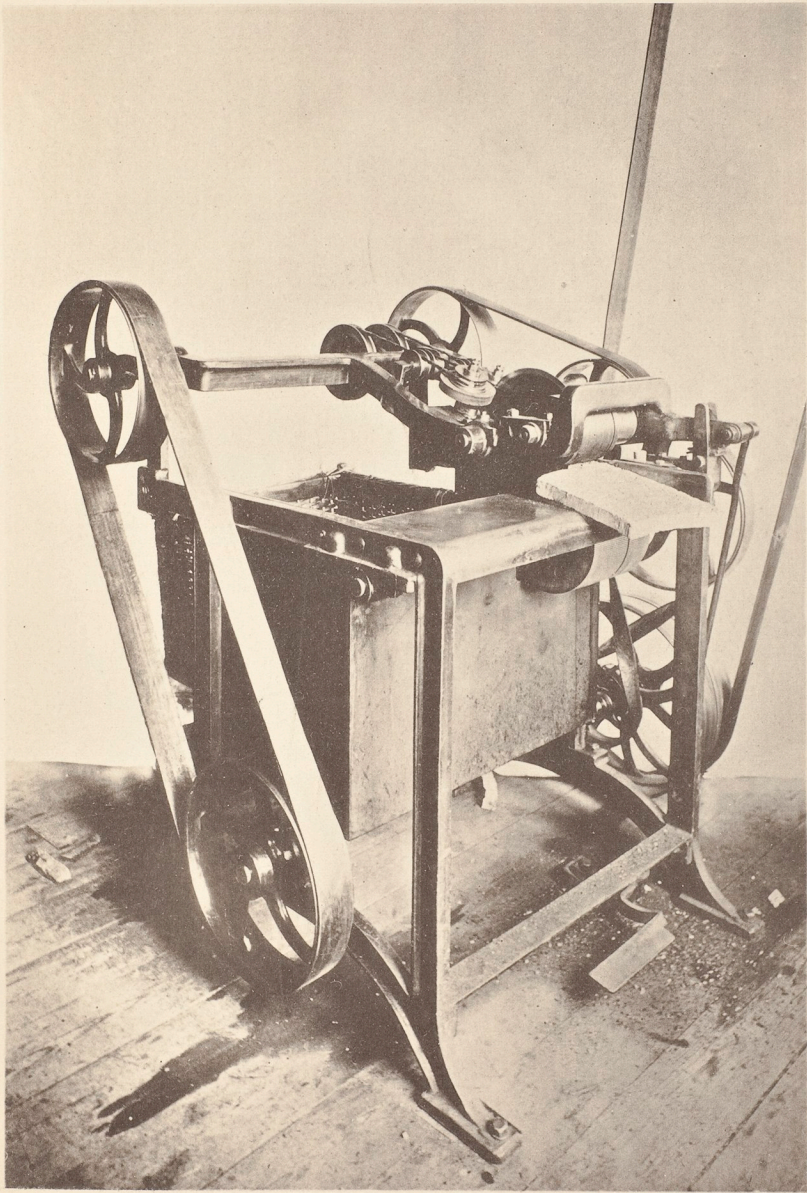
Power required, $\frac{1}{3}$ HP.

Weight, 750 lbs.

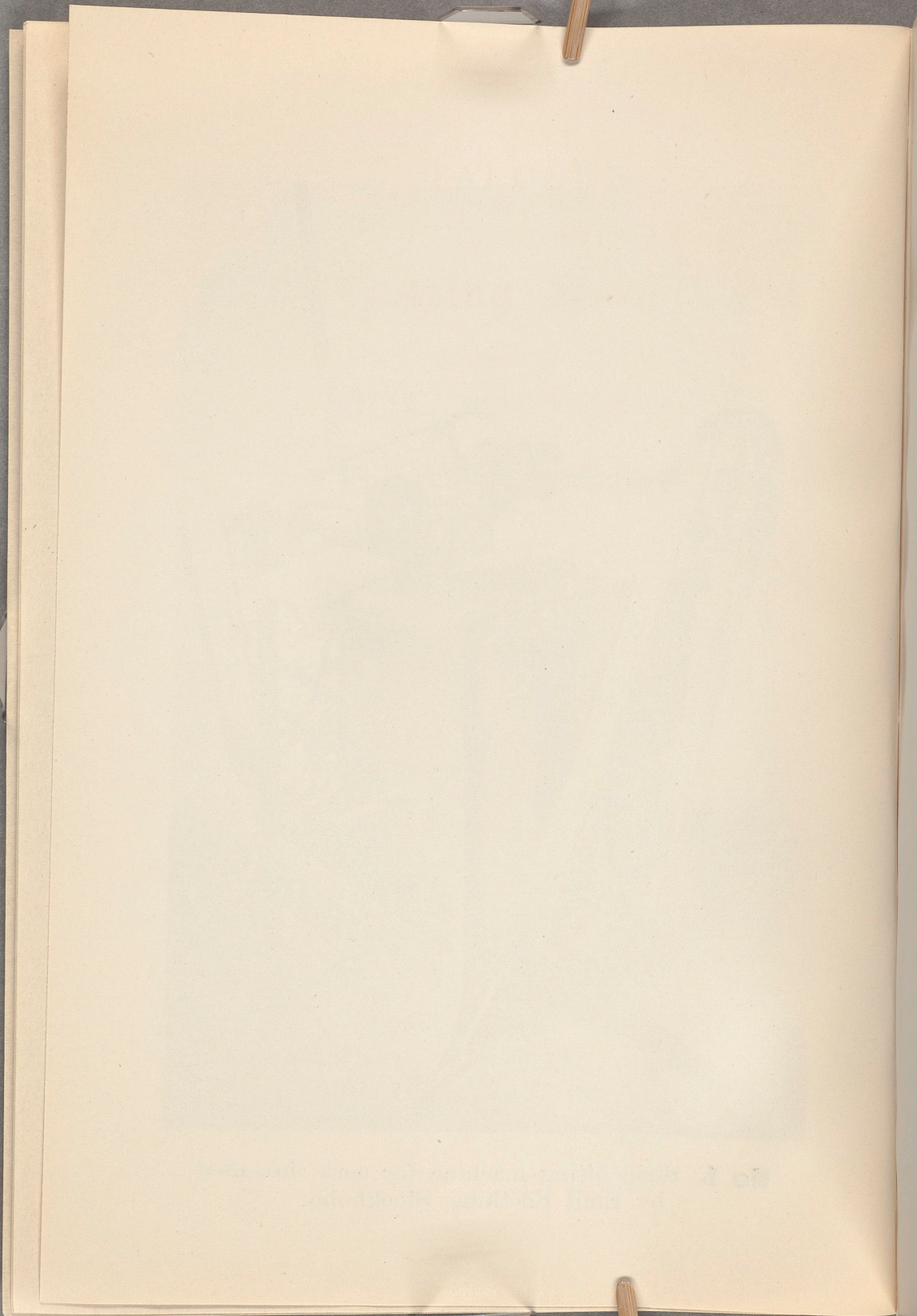
Dimensions: 54" high \times 52" wide \times 46" long.

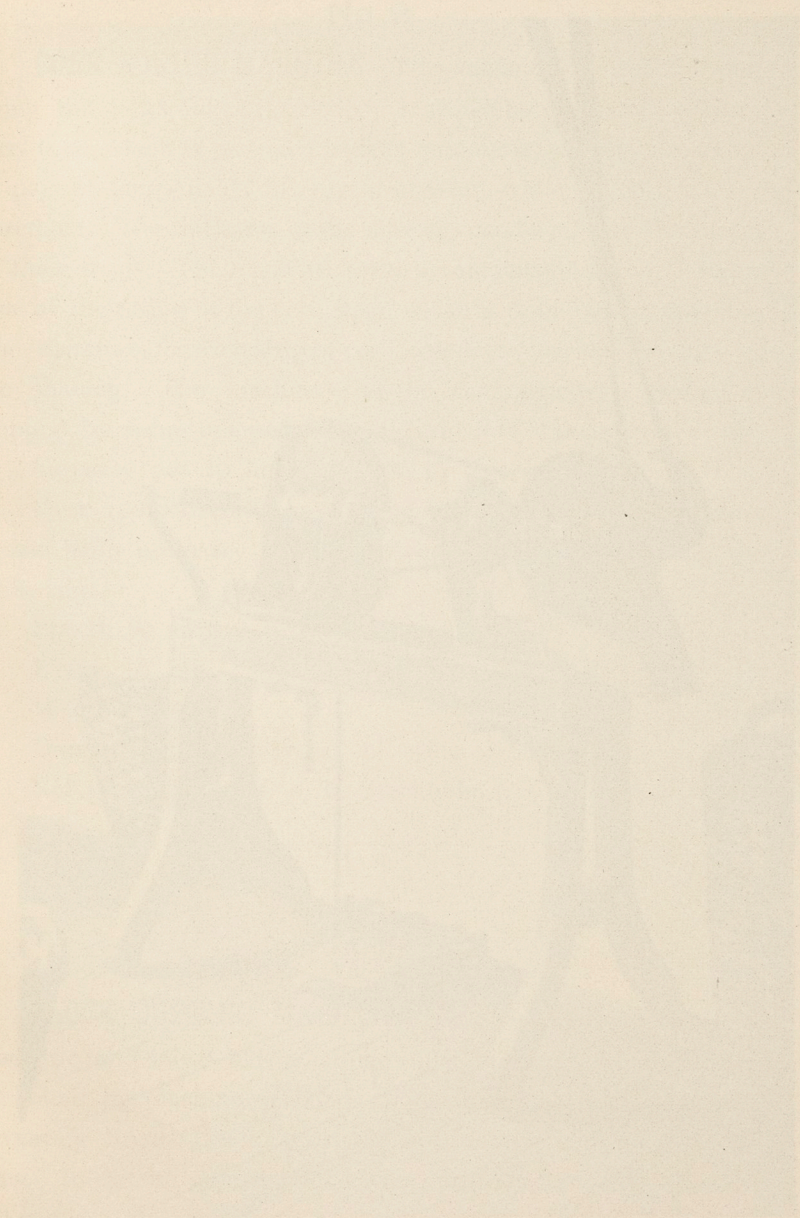
Net price, \$ 370. f. o. b. Stockholm.



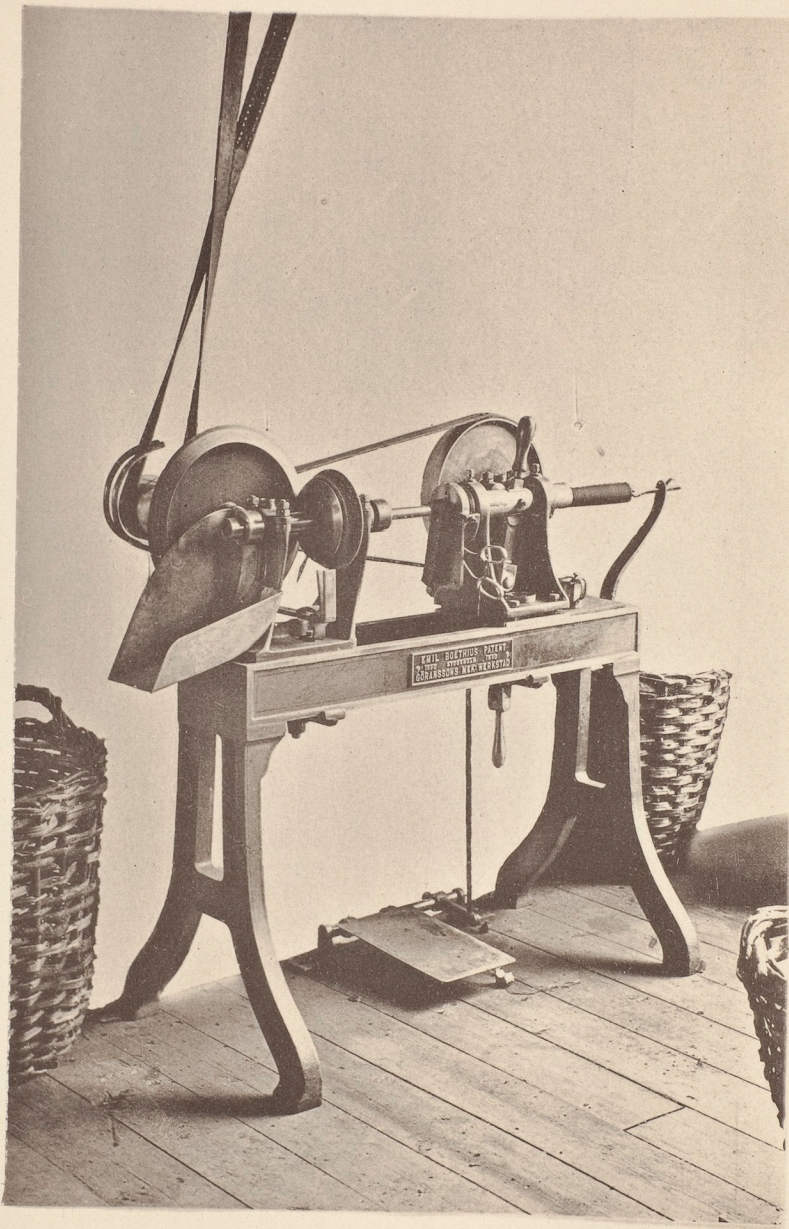


No 1. Stripcutting machine for cork, invented
by Emil Boëthius, Stockholm.





No. 31. (continued) ...
... ..



No 2. Corkboring machine, invented by
Emil Boëthius, Stockholm.

No 2.

CORK BORING MACHINE. This machine is used for punching the corks out of the Strips. It works by means of a rotating steel tube, which is provided with an automatic grinding apparatus. A pair of tongs holds the strip in position, while the cork is being bored out. The thickness of the shavings can be adjusted by means of these tongs. The machine works automatically, with the exception of the fitting of the cork strip, which is done by the operator, who, therefore, for each strip of cork, can determine the thickness of the shaving. The machine can be instantaneously started or stopped, by means of a pedal on which the foot of the operator rests.

Capacity per 10 hours, 10,000 to 21,000 corks.

Over 100,000 corks have some times been produced, before it has been necessary to interrupt operations, for trimming the knife edge.

Speed, 80 strokes p. m.

Power, $\frac{1}{4}$ HP.

Weight, 320 lbs.

Dimensions: 46" high \times 20" wide \times 60 long.

Net price, \$ 370. f. o. b. Stockholm.



No 3.

BLOCK CUTTING MACHINE, for dividing the strips into prismatic or conical blocks, from which the corks are afterwards cut round by machine or hand. This machine acts by means of a rotating circular knife, provided with automatic grinding apparatus. It can be adjusted for cutting prismatic or conical blocks, and can also, for each block, be re-adjusted to cut a different width.

Capacity per 10 hours, 8,000 to 12,000 blocks.

Power, $\frac{1}{3}$ HP.

Weight, 220 lbs.

Dimensions: 40" high \times 30" wide \times 28" long.

Net price, \$ 250. f. o. b. Stockholm.



No 4.

CORK TURNING MACHINE, for cylindrical or conical wine and cask corks, for which the blocks have been cut on the machine No 3. The machine acts by means of a rotating circular knife, provided with automatic grinding apparatus, and by means of a turning lathe, adjustable for cylindrical or conical corks. This lathe can be adjusted for every block, so as to vary dimensions. The machine can also, by the attachment of a special guide, be used for planing thinner or thicker strips of cork.

Capacity per 10 hours, 4,000 to 8,000 corks.

Power, $\frac{1}{2}$ HP.

Weight, 660 lbs.

Dimensions: 52" high \times 40" wide \times 36" long.

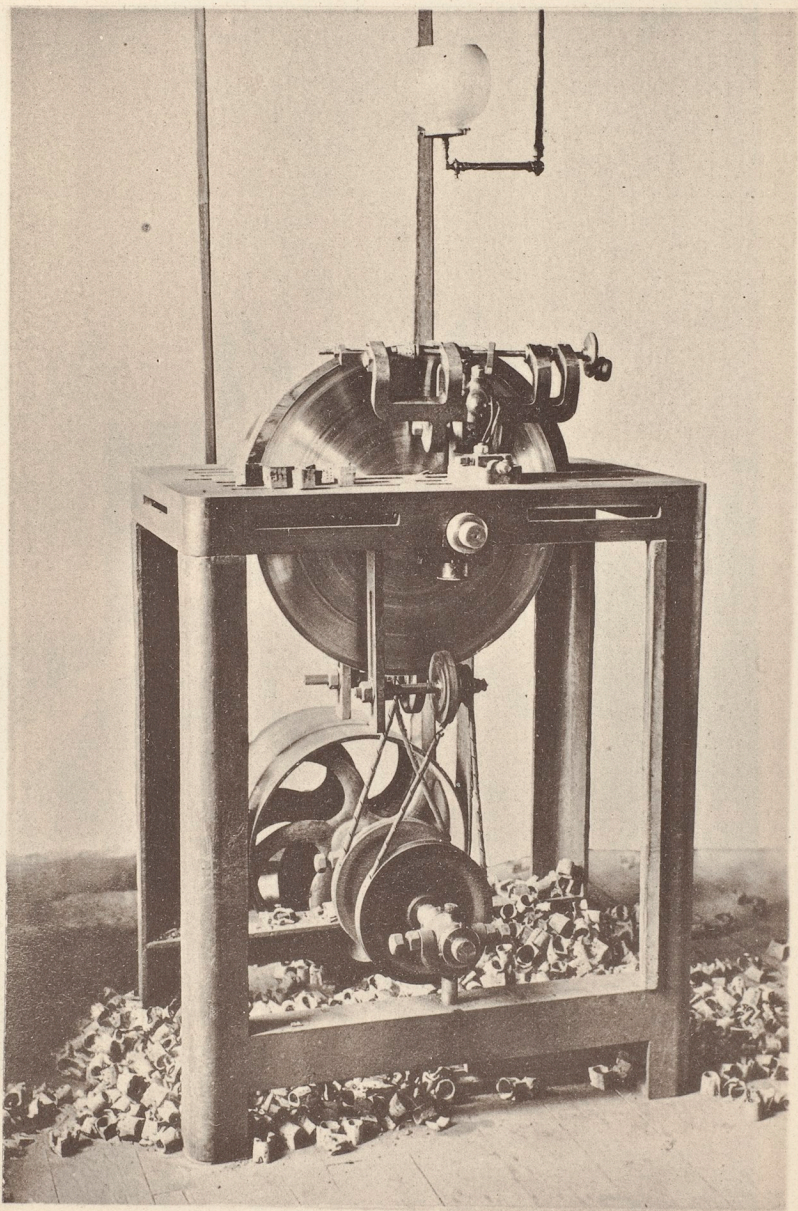
Net price, \$ 370. f. o. b. Stockholm.



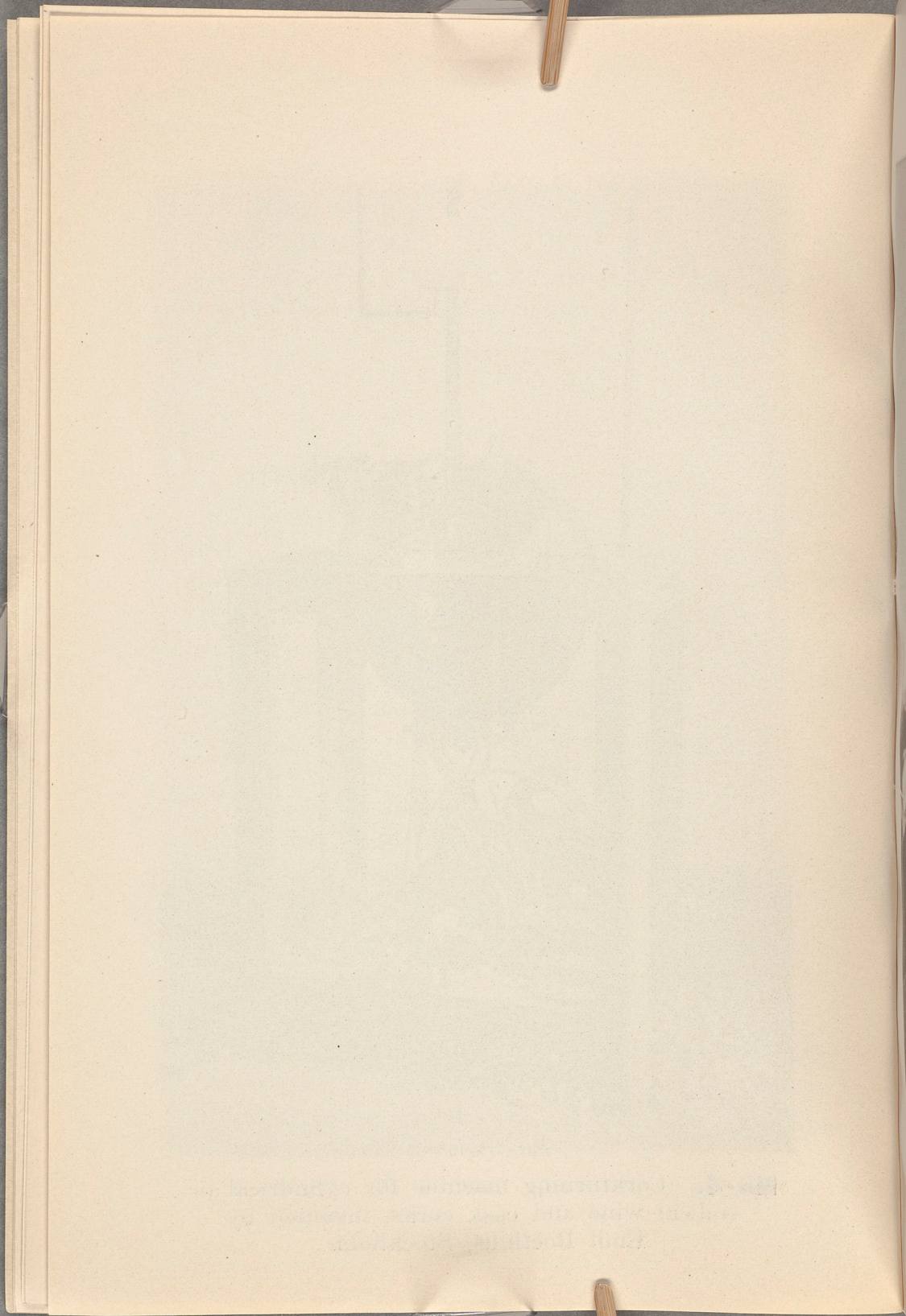
No 5.

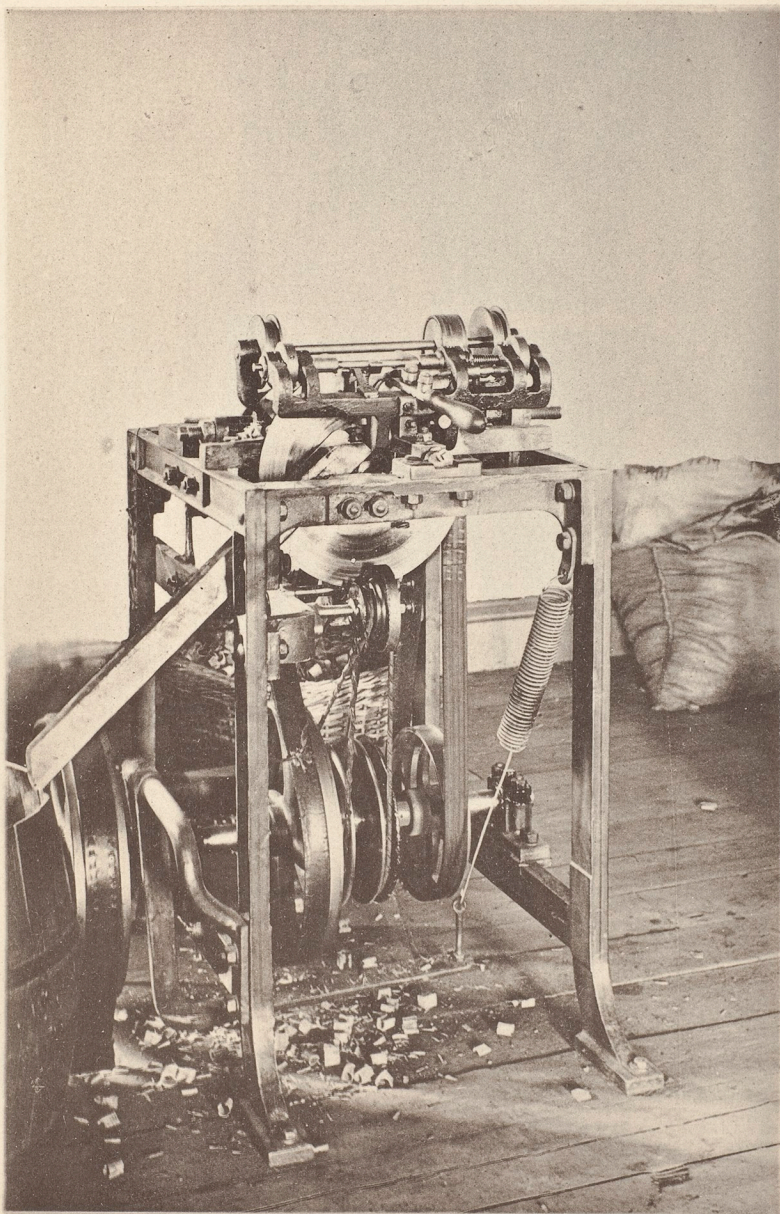
CORK TURNING MACHINE FOR DRUGGIST'S CORKS.

The machine is provided with a rotating circular knife, with automatic grinding apparatus, also with a turning lathe, adjustable to different diameter for every cork.

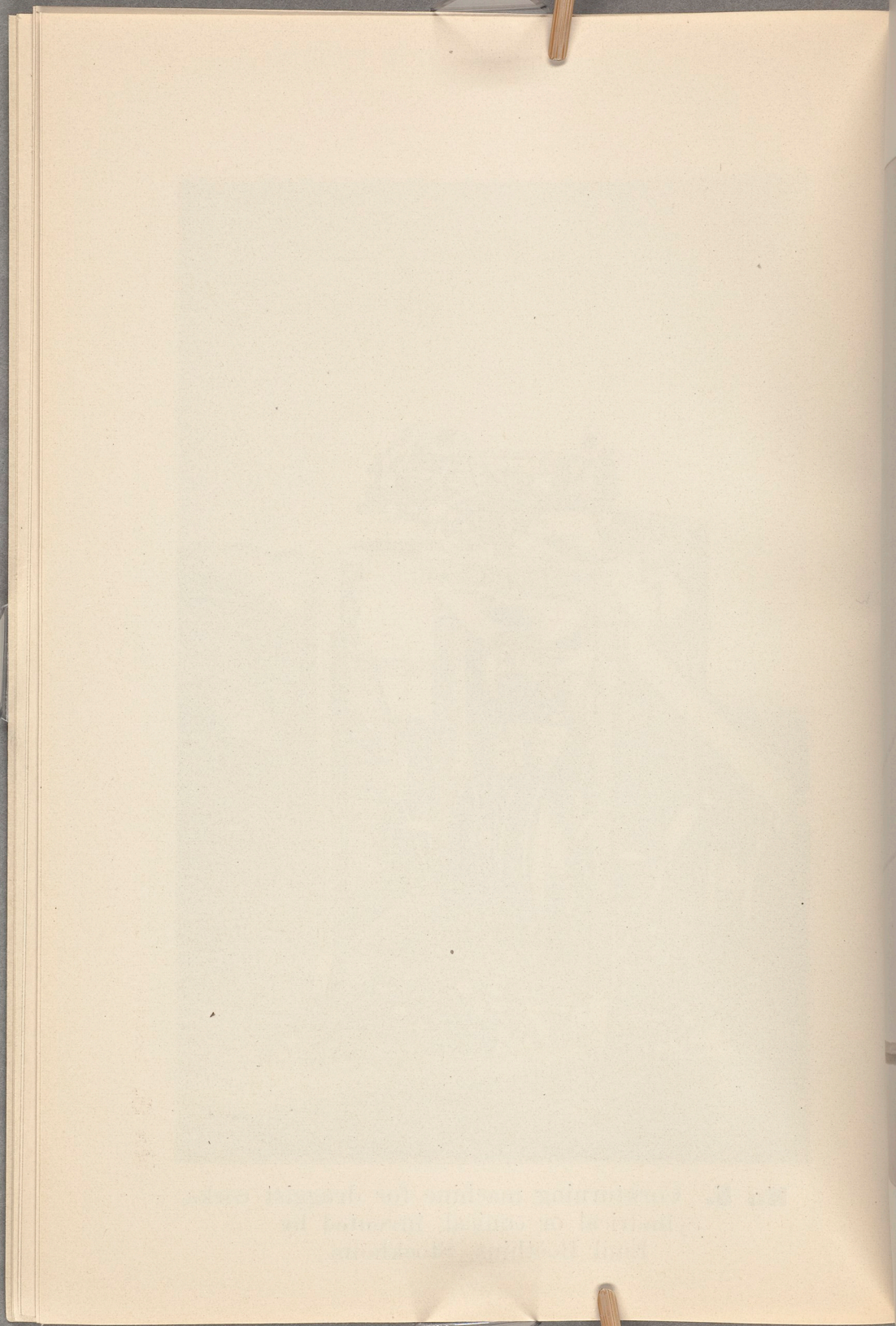


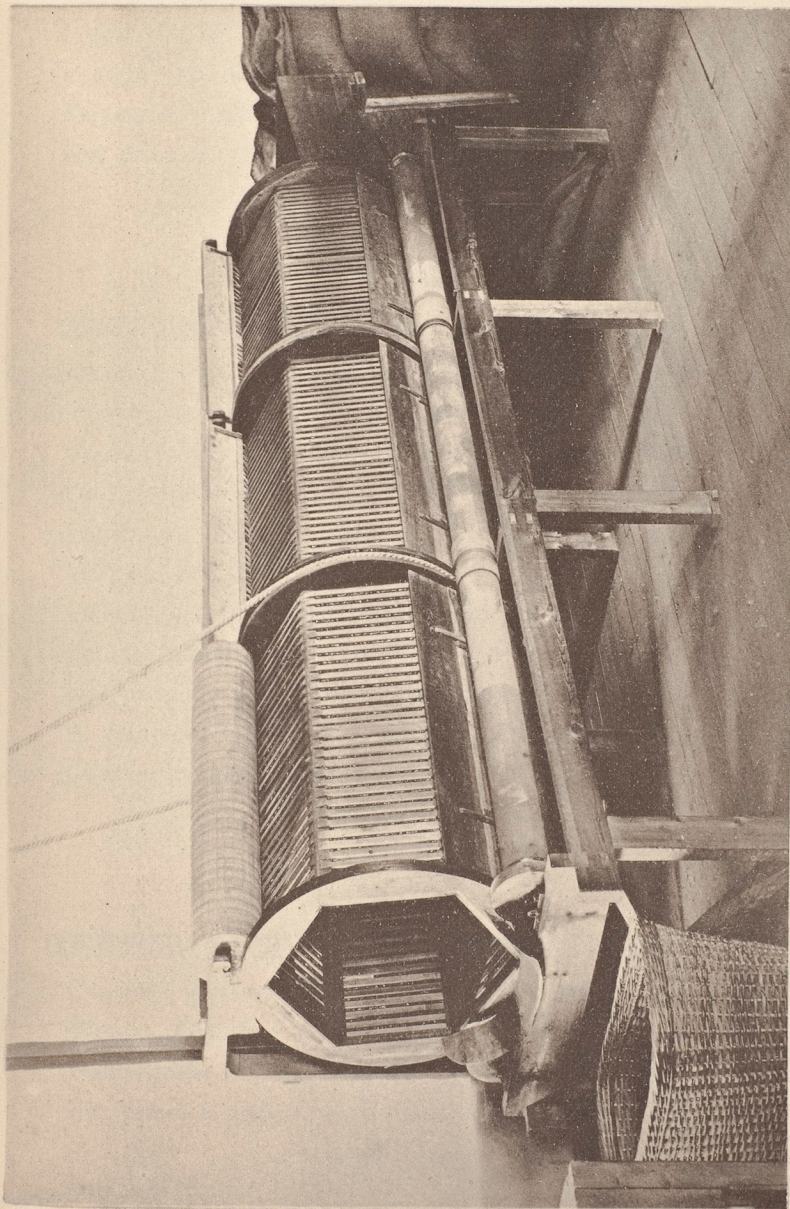
No 4. Corkturning machine for cylindrical or conical wine and cask corks, invented by Emil Boëthius, Stockholm.





No 5. Corkturning machine for druggist corks, cylindrical or conical, invented by Emil Boëthius, Stockholm.





No 6. Assortingmachine for corks fabricated by hand or by machines Nr 4 & 5.
Invented by Emil Boëthius, Stockholm.

Capacity per 10
Power, 1/4 HP.
Weight, 220 lbs
Dimensions: 40
Net price, \$ 370

INSERTING M.

machines Nrs 4
oper, in four size
Capacity, per 10
The operator ca
Power, 1/2 HP.
Weight, 110 lbs
Dimensions: 70
Can be packed
Net price, \$ 18
A complete fact
operated by one

INSERTING MA

Capacity, per 1
Weight, 165 lb
Dimensions: 80
Net price, \$ 13

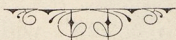
Capacity per 10 hours, 5,000 to 8,000 corks.

Power, $\frac{1}{4}$ HP.

Weight, 220 lbs.

Dimensions: 40" high \times 30" wide \times 28" long.

Net price, \$ 370. f. o. b. Stockholm.



No 6.

ASSORTING MACHINE, for corks, fabricated by hand or on machines Nrs 4 and 5. It assorts the corks, according to diameter, in four sizes, with as little difference as $\frac{3}{64}$ ".

Capacity, per 10 hours, 100,000 to 200,000 corks.

One operator can handle several machines.

Power, $\frac{1}{3}$ HP.

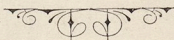
Weight, 110 lbs.

Dimensions: 70" high \times 44" wide \times 16 ft. long.

Can be packed in a box of 60 cu. ft.

Net price, \$ 180. f. o. b. Stockholm.

A complete factory will require 3 such machines, which can be operated by one person.



No 7.

COUNTING MACHINE WITH AUTOMATIC COUNTER.

Capacity, per 10 hours, up to 300,000 corks.

Weight, 165 lbs.

Dimensions: 80" high \times 60" wide \times 48" long.

Net price, \$ 150. f. o. b. Stockholm.



No 8.

GRINDING MACHINE FOR CORK CUTTING KNIVES.

Acts by means of an emery wheel.

Power, $\frac{1}{2}$ HP.

Weight, 330 lbs.

Dimensions: 48" high \times 28" wide \times 30" long.

Net price, \$ 195. f. o. b. Stockholm.



No 9.

BRANDING MACHINE, for burning of trade-marks, etc., in the ends of the corks. Can also be provided with automatic counter.

Speed 120 strokes p. m.

Stamping capacity, 50,000 to 70,000 corks, per day of 10 hours.

Weight, 330 lbs.

Dimensions: 68" high \times 20" wide \times 28" long.

Net price, with counter \$ 195. } f. o. b. Stockholm.
» » without » \$ 170. }



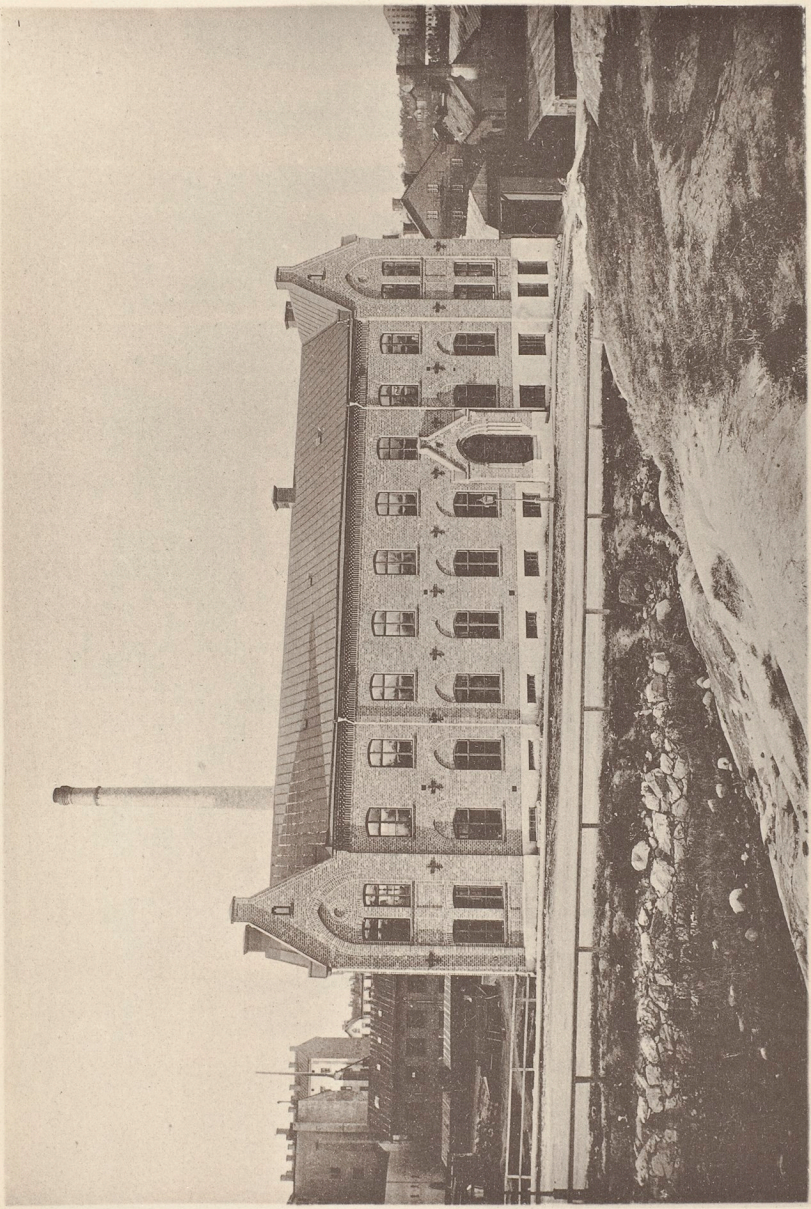
G KNIVES.

e-marks, etc., in
with automatic

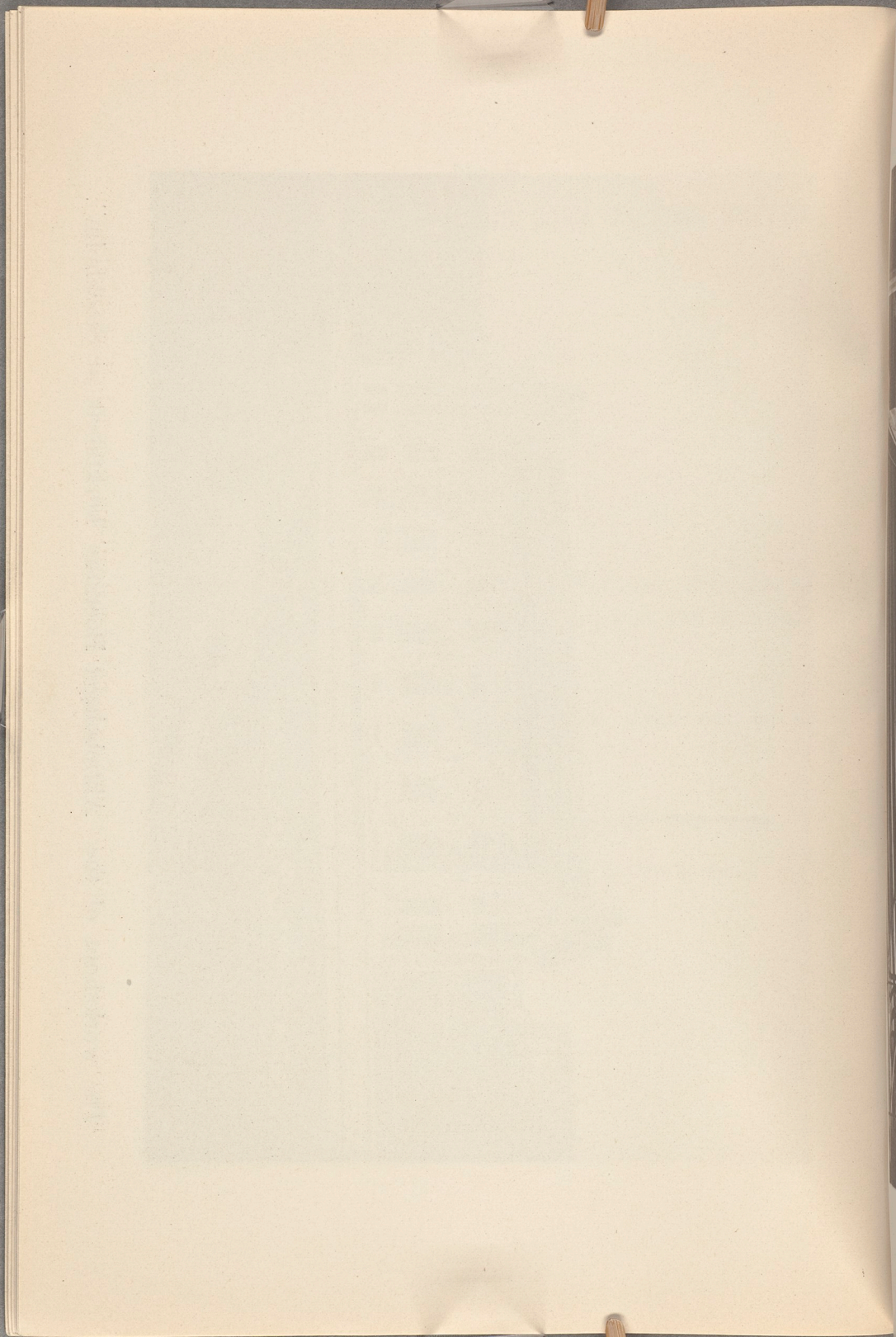
ks, per day of

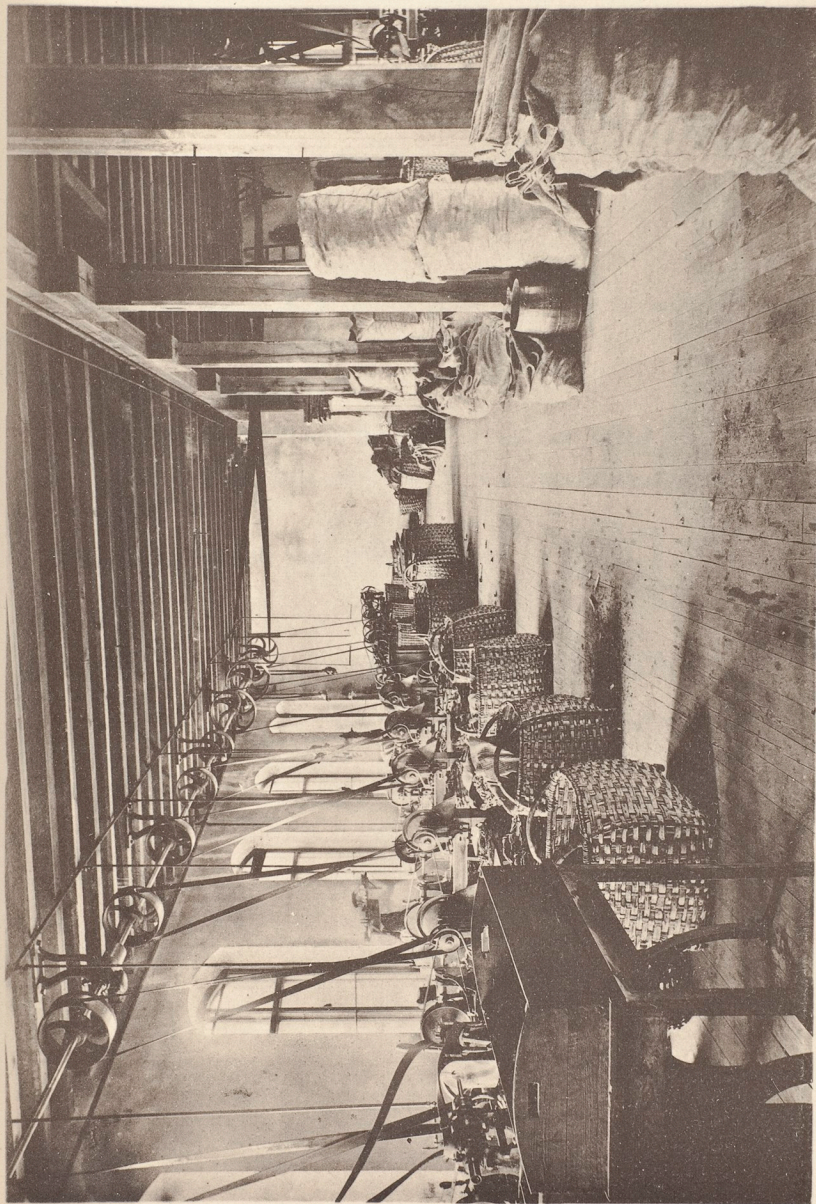
long.

Stockholm.



The workshops of the "Aktiebolaget Boëthius' korkfabrik at Stockholm".





The interior of a workshop in the "Aktiebolaget Boëthius' korkfabrik at Stockholm."

The prices are
one per cent
Conditions of
One third of the
The rest, also
be delivered.
Orders are rece

The prices are f. o. b. Stockholm. Packing is to be paid with one per cent of the amount of invoice.

Conditions of payment:

One third of the amount in cash, when the order is given.

The rest, also in cash, as soon as the machines are ready to be delivered.

Orders are received and effectuated by

Emil Boëthius.

Stockholm, Sweden.

STOCKHOLM
KÖERSNERS BOKTRYCKERI-AKTIEBOLAG
1895

M
-AKTIEBOLAG

