

St. Martins gillestadga
(fragment) : Isl. perg. 8:o 10
VIII

HS Isl. perg. 8:o 10 VIII

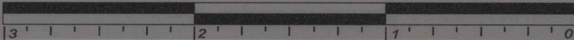


ed ualla fa as u u he a sialp at quo minia
stuldo puit dzyobit ua f to aul ud upp stent
eda minie la bozi fa pbat h minia puit in id
diast huc sambuau f blestada bpc teu ui
kaf bidia at h hepti suo subialia pioe p id
ano p ot lottapoi tubu y f m m m s atavud
u. j. mote en blestada olapue bpa t y o u a h
ne fa d h a badadi zetta teu as sialp gudi
in sco m m m minia s o u u u p a s o h a t t e t
h p u e p c a m a b e m a s u o m m m t i s d r a u p u i
puzi dualia suo dagi at d e s a p p i t a n u h u e l p
d at p h o m i n u a n h a l l a d a u p i t i s i o u u a p d a d
aulinu at e i s b a l a h o i t d u p e i s a t t a i n
biolla en d u a t e e p t o t o o t e m m e p i n
e z u p d a e n t f r u c i a p i s t a a t p l a i z a
p y o r z m m m m m a o n p a g e n l o p e s a u o d u
e n o o t u p i h e p d e p i a p u e e o d t m a u e e
m a i b a t e z e h q u e l a p e e u u i t e o p l a b a t
b l a d r e m m a u e n d i s a n d e m t r u g l e d r
o t a l l a l a m f i t - 3 o r p a p u i u i l e
w l a p p d a u d a q s o m m m m m m p u g b r e z
z o t p e r u s p e n d e s o t t m l h o z n e a m h e p a
- s e t t h d f i t l a d a b l a u y e p t l a g a t o u t e o
v h o p l a i z a a t t a l a f o b e u o r a l l e j a m p a t e

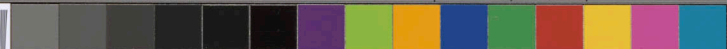
af s. martin Gilly. 1600

vanda brodi hūvū me at vā gladi: gī vel
tōint t' dāisa: v' f' a' vestrana vertez en
hūsem hū' bām in palle eō v' l' d' d' d'
dies mīm noob' oblut vād sūe lib'
tebt se laubogī ut vilaz ē p' f' at far
te mīp' bām sām hāpant ē allez gāpū a
v' f' tebt' vū hū' dō - p' d' alla vā . i
mily s' t' kulū vā . i . dōū hū' v' anāa hū'
te pīnust ian pād v' f' eāp' f' s' p' vād
i . i . sām v' p' d' allū en hū' at eā dō d' eā d'
d' p' v' p' p' m' eī hūvū mot' f' abīd' h'
h' p' abīd' at b' v' v' eā v' s' f' at e'
e' d' m' e' d' d' hū' v' p' f' d' v' d' d' hert
d' g' v' v' te v' d' e' t' v' p' v' p' v' d' d' m'
hāp' blāca s' h' i' m' s' v' v' l' o' b' i' a' o' l' l' a'
b' d' i' s' d' d' e' v' a' p' i' n' a' p' d' p' u' s' a' v' o' p'
d' h' v' a' l' p' h' e' v' o' l' e' d' e' n' d' a' g' p' a' l' h' i' n'
b' e' i' v' b' v' v' v' v' v' v' v' v' v' v' v' v' v' v' v'
hūga . i . p' y' . i . f' i' a' l' a' n' t' f' v' t' ē l' a'
m' h' v' v' v' v' v' v' v' v' v' v' v' v' v' v' v'
d' m' i' d' i' g' a' l' l' e' h' a' v' p' v' v' a' l' l' g' h' y' l' l' e' s'

inches



centimeters



	1	2	3	4	5	6	7	8	9	10	11	12	13	14	15
L*	38.76	65.15	49.61	43.54	55.52	70.42	63.13	40.08	51.75	95.34	92.09	86.92	82.37	72.17	62.32
a*	13.81	19.21	-4.20	-12.89	8.78	-32.39	35.43	10.25	47.36	-0.90	-0.92	-1.12	-1.12	-1.05	-1.10
b*	14.69	17.92	-21.33	22.66	-24.31	-0.48	57.84	-44.77	16.93	1.90	1.46	0.97	0.56	-0.04	-0.01

	16	17	18	19	20	21	22	23	24	25	26	27	28	29	30
L*	49.61	38.89	28.60	17.97	9.50	4.33	30.32	72.50	72.10	29.51	55.60	43.48	82.02	52.85	50.86
a*	-1.29	-0.23	-1.09	0.04	0.45	0.32	22.13	-22.92	19.51	13.42	-38.46	50.74	3.28	49.90	-27.78
b*	-0.10	-0.48	0.07	0.09	0.25	-0.47	-19.02	56.08	67.85	-47.69	32.19	29.13	78.75	-12.86	-27.68

D50 Illuminant, 2 degree observer

Density → 0.05 0.09 0.16 0.22 0.36 0.52

Dox Williams

0.75 0.98 1.24 1.64 1.96 2.38

All values are batch averages

M000873