

WORLD'S COLUMBIAN EXPOSITION

Swedish Catalogue. : I. Exhibits. Worlds Columbian exposition 1893 Chicago

Samson & Wallin
1893

EOD - Miljoner böcker bara en knapptryckning bort. I mer än 12 europeiska länder!



Tack för att du väljer EOD!

Europeiska bibliotek har miljontals böcker från 1400- till 1900-talet i sina samlingar. Alla dessa böcker går nu att få som e-böcker – de är bara ett musklick bort. Sök i katalogen från något av biblioteken i eBooks on Demand- nätverket (EOD) och beställ boken som e-bok – tillgängligt från hela världen, 24 timmar per dag och 7 dagar i veckan. Boken digitaliseras och blir tillgänglig för dig som e-bok.

EOD bokens fördelar!

- Få samma utseende och känsla som med originalet!
 - Använd ditt standardprogram för att läsa boken på skärmen, zooma och navigera genom boken.
 - *Sök:** Använd fulltextsökning för enskilda fraser.
 - *Klipp & klistra:** Kopiera bilder och delar av texten till andra applikationer (t.ex. ordbehandlingsprogram).
- *Ej tillgängligt i varje e-bok.

Villkor för användning

Genom att använda EOD-tjänsten accepterar du de villkor som ställs av biblioteket som äger den aktuella boken.

- Villkor för användning: <https://books2ebooks.eu/csp/sv/nls/sv/agb.html>

Fler e-böcker

Redan nu erbjuder 40 bibliotek från 12 europeiska länder denna service. Sök böcker tillgängliga för den här tjänsten: <https://search.books2ebooks.eu>
Mer information finns tillgängliga via <https://books2ebooks.eu> boken.



S W E D E N

WORLD'S COLUMBIAN EXPOSITION, CHICAGO 1893.

WORLD'S COLUMBIAN EXPOSITION, CHICAGO 1893.

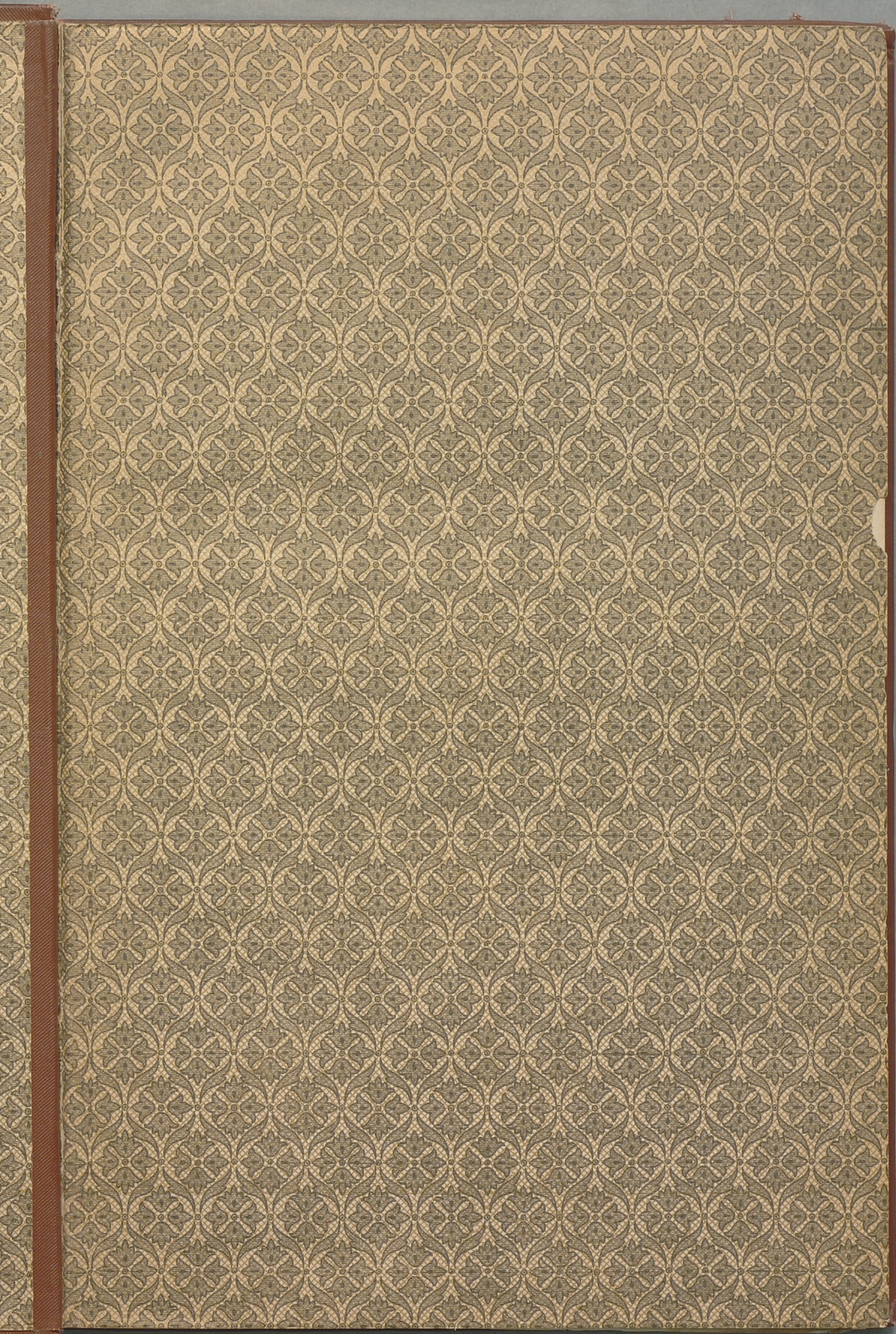
Kungl. Biblioteket
STOCKHOLM

Ust

Ust

1895

C. 1000



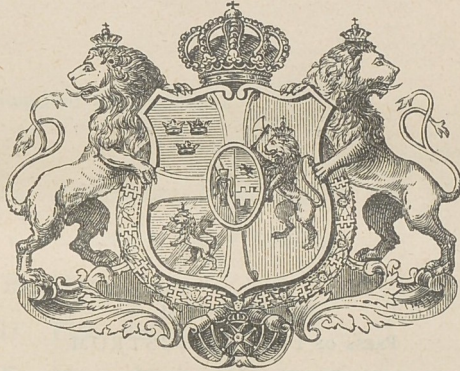
Kungl. biblioteket



0 0000 000003169

CHICAGO. WTST. 1893

SWEDISH CATALOGUE



I.

EXHIBITS.

WORLD'S COLUMBIAN EXPOSITION
1893.

CHICAGO.



SWEDISH CATALOGUE



STOCKHOLM.
PRESS OF IVAR HÆGGSTRÖM
1893.

EXHIBITS

WORLD'S COLUMBIAN EXPOSITION

1893

CHICAGO



CONTENTS.

The Royal Swedish Commission	Page	IV
Index	»	VII
Department A. Agriculture, Food, etc.	»	I
» » Exhibits in Dairy Building	»	2
» B. Horticulture	»	5
» D. Fish, Fisheries, etc.	»	5
» E. Mines, Mining and Metallurgy	»	6
» F. Machinery	»	17
» G. Transportation	»	19
» H. Manufactures	»	21
» K. Fine Arts	»	42
» L. Liberal Arts	»	48
» M. Ethnology, Archæology, etc.	»	55
» » Group 172, Exhibits in Woman's Building	»	56

ROYAL SWEDISH COMMISSION TO THE WORLD'S
COLUMBIAN EXPOSITION.

PRESIDENT.

ÅKERMAN, RICH.,—*Director General, Royal Board
of Commerce,* Stockholm, Sweden.

MEMBERS.

ÅLMSTRÖM, R.,— <i>Manufacturer,</i>	Stockholm, Sweden.
ÅRWIDSSON, T. A.,— <i>Commodore, R. N.</i>	Stockholm, Sweden.
BJÖRCK, G. O.,— <i>R. A. of Fine Arts,</i>	Stockholm, Sweden.
BÄCKSTRÖM, J.,— <i>Manufacturer,</i>	Stockholm, Sweden.
CLASON, I. G.,— <i>Professor, Polytechnical Institute,</i>	Stockholm, Sweden.
ENGELKE, DANIEL,— <i>Manufacturer,</i>	Norrköping, Sweden.
GEORGII, B. A. F.,— <i>U. S. v. Consul,</i>	Stockholm, Sweden.
KOCKUM, C. L. P.,— <i>Agriculturist,</i>	Bulltofta, Sweden.
LITHANDER, P. EM.,— <i>Merchant,</i>	Gothenburg, Sweden.
LJUNGBERG, E. J.,— <i>General Manager of Stora Kopparbergs Bergslag,</i>	Falun, Sweden.
SVEDELIUS, A. G. J.,— <i>Major,</i>	Uddeholm, Sweden.
SÖDERBLOM, K.,— <i>Manufacturer,</i>	Eskilstuna, Sweden.
THAM, W.,— <i>General Manager of Husqvarna Arms Manufacturing Co., Lim.,</i>	Husqvarna, Sweden.

PRINCIPAL SECRETARY AND CHIEF COMMISSIONER
FOR THE KINGDOM OF SWEDEN.

LEFFLER, ARTUR,—*Mechanical Engineer,* Gothenburg, Sweden.

 ASSISTANT SECRETARIES.

- At Stockholm, KREÜGER, I., Stockholm, Sweden.
 At Chicago, WELIN, AXEL, London, England.

COMMISSIONERS.

- BERGENDAL, TOM,—*Special Commissioner, Metallurgical Department,* Söderfors, Sweden.
 LINDBLOM, ROBERT,—*Acting Commissioner until the arrival of the Commissioners from Sweden,* Chicago, Ill. U. S. A.
 POSSE, NILS, Baron,—*Special Commissioner, Swedish Tourist Club,* Boston, Mass. U. S. A.
 ZORN, ANDERS L.—*Special Commissioner, Fine Art Department,* Stockholm, Sweden.

 ARCHITECT OF THE SWEDISH PAVILION AND THE
 INTERIOR DECORATIONS OF THE SAME.

- WICKMAN, G.—*Architect,* Stockholm, Sweden.

ASSISTANTS.

- HOLCK, INGEBORG,—*Corresponding Secretary, Translator of Swedish Catalogue, Part I,* Stockholm, Sweden.
 HÖRLIN, H.—*Architect, Arranger of Dining-room and Library in the Swedish Pavilion,* Stockholm, Sweden.
 LARSSON, O.—*Clerk to Mr. Lindblom, Com. pro temp.,* Chicago, Ill. U. S. A.
 LINDEGREN, AUG.—*Architect, Arranger of the exhibition of the Swedish Tourist Club and of Drawing-room and Bed-room in the Swedish Pavilion,* Stockholm, Sweden.
 LUNDGREN, ERNST,—*Agent at New-York,* New-York. U. S. A.
 LÖFSTRÖM, S. A.—*Ph. D., Actuary, Editor of Swedish Catalogue, Part II,* Stockholm, Sweden.

MALMBORG, R. E.,— <i>Foreman at Chicago,</i>	Gothenburg, Sweden.
STOCKENBERG, J.,— <i>Clerk,</i>	Stockholm, Sweden.
ÖSTLING BROS.,— <i>Assistant Architects to Mr. Lind-</i> <i>blom, Com. pro temp.,</i>	Chicago, Ill. U. S. A.

The Swedish Pavilion is constructed by G. WICKMAN, Architect, and built by the ESKILSTUNA WOOD MANUFACTURING Co. Lim. under the supervision of E. LUNDBLAD, General Manager, and EDV. BERG, Building Master.

The facing materials of the stone front are furnished by the following firms: BÖRRINGE BRICK WORKS, HÖGANÅS COAL MINING Co., MINNESBERG BRICK WORKS, SCANIAN CEMENT Co. Lim., SCANIAN CEMENT FOUNDRY, SKROMBERGA COAL & CLAY MANUFACTURING Co. Lim., WALLÅKRA COAL MINING Co. Lim.

NOTES.

1. All the exhibits classed in Departments E, G, H and L as well as some of the exhibits of Departments F, K and M are to be found in the Swedish Pavilion.
2. A great number of the exhibits are for sale through the agency of the Swedish Commissioner's Office.
3. A second part of the Catalogue, containing general description of Sweden and Swedish culture, is published.

ABBREVIATIONS.

Prev. aw. = Previous award; Swed. Pav. = Swedish Pavilion;
Wom. B. = Woman's Building.

INDEX.

	Nos.
Adelborg, Otilia,	435
Agricultural Society of the Province of Blekinge,	364
Ahlberg & Ohlsson,	387, 401
Ahlborn, Lea,	432
Almgren, J. R.,	92
Almgren, K. A.,	165
Albert, G.,	271
Alnarp Blacksmith's School,	363
Althin, C.,	332
Andersson, Aug.,	114
Andersson, Axel Reinhold,	36
Andersson, J. A. G.,	272
Andersson, N. B.,	84
André, Wilhelmina,	191
Andrén, V.,	339
Ankarsrum Iron Works Co. Lim.,	46 a, 52 a, 55 a
Arborelius, O.,	273
Askenström, Catharina,	168, 187
Avesta Steel Works Co. Lim.,	46 b, 52 b, 55 b
Bagge, Axel & Co.,	15
Baltzer, C. E. L.,	404
Barnekow, S., Technical-Chemical Laboratory,	8
Barnängen Technical Manufacturing Co. Lim.,	77
Beck. F. & Son,	85
Beckman, Axel,	93
Beer, A.,	274
Behm, Wilh.,	275

	Nos.
Beijer, F. & G.,	370, 379
Bengtsson, Karna,	179
Berg, Edv.,	116
Berg, E. A.,	245
Bergh, Rich.,	276
Berglund, Anna,	94
Bergsund Mechanical Works Co. Lim.,	69
Beskow, B.,	135
Björck, O.,	277, 340
Blomqvist, C. G.,	390
Boberg, Anna,	325, 434
Boberg, F.,	334
Bodafors Chair & Furniture Manufactory,	96
Bofors-Gullspång Co., Lim.,	46 c, 49 c, 52 c, 55 c, 217 c
Boklund, Cecilia,	426
Bonnier, Alb.,	371
Bonnier, Eva,	278
Borg, A.,	279
Bovallius, C.,	402 a
Bratt, Charles E.,	64
Bredberg, Mina,	280
Brunsson, Johanna,	106, 170, 413
Byström, O.,	402
Börjesson, John,	268
Carlman, C. F.,	160
Carlstein, P. A.,	136, 149
Cederlund, J. & Sons,	16
Cervin-Ellqvist, Elna,	167
Chadwick, Emma,	281
Chalk Quarries Company,	72
Chrysender, John,	1, 2
Collective Exhibition of the Swedish Iron Masters, 46, 49, 52, 55, 61, 66, 67, 68, 215, 217, 227, 228, 231, 236, 240, 254	
Committee of Swedish Ladies,	407

	Nos.
Dahlgren, C. W.,	246, 347
Dahlman, C. E.,	380
Degerfors Iron & Steel Works,	46 d, 52 d, 55 d, 61 d, 228 d
Dikman, August,	142
Economic Survey of Sweden,	384
Ekstrand, E. G.,	348
Ekström, Per,	282
Engeström, Nina von,	171, 180
Engström, Joh.,	247, 360
Ericsson, Anna,	326
Ericsson, Joh.,	283
Ericsson, O. A.,	63
Eriksson, Bros.,	97
Eriksson, Chr.,	150, 156, 261, 269
Eskilstuna Cutlery Co., Lim.,	248
Eskilstuna Wood Manufacturing Co., Lim.,	398
Ethnographical Museum of the North,	439
Eugen, Prince of Sweden and Norway,	284, 341
Fagersta Iron and Steel Works Co., Lim., 46 e, 49 e, 52 e, 55 e, 215 e, 228 e, 254 e	
Fahlcrantz & Co.,	372
Finspong Gun Factory Co., Lim., Iron Works of Finspong and Grytjöl,	46 f, 49 f, 55 f, 218, 227 f, 228 f, 231 f, 236 f
Forsbacka Iron Works Co., Lim.,	46 g, 49 g, 52 g, 55 g, 228 g
Flora Technical Co., Lim.,	78
Forssell, D. Sons & Co.,	185, 186
Friends of Handiwork,	203, 207, 408
Fritze, C. E.,	373
Gahne, Hedda,	107
Gellerstedt, A. T.,	327
Genberg, A.,	285
General Skating Club of Stockholm,	356

	Nos.
Geological Survey of Sweden,	35, 37, 59, 385
Gerlach, H.,	38
Gillberg, Otto,	50
Gisberg, Sofia,	436
Giöbel, Selma, Exhibition of Swedish Art Industry, 100, 109, 143, 204, 419	
Goldsmith's Co., Lim.,	154
Grafström, Julie,	423
Grafversfors Stone Works,	39, 132
Green, C. E.,	157
Gustafsfors Manufacturing Co., Lim.,	25, 81
Gymnastic and Fencing-Club of Stockholm,	355
Gymnastic Society of Stockholm,	354
Gysinge Co, Lim.,	26
Göranson, Ellen,	108
Gössäter Stone Works,	134
Hagborg, Aug.,	286
Hagdahl, Joh.,	400
Haglund, Rob.,	335
Haig, A. H.,	336
Halda Watch Manufacturing Co., Lim.,	162, 163
Hallberg, C. G.,	151, 158, 161
Hallborg, Lotten,	171 a
Hallgren, E. & Sundell, R.,	368
Halling, A.,	, 249
Hallström, Hadar,	250, 388
Hasselberg, Per.,	65, 262, 270
Hebbe, Hulda,	200
Hedberg, Gustaf,	86
Hedengran & Son,	251
Heljestrand, C. W.,	252
Helleberg, A. L. & Son,	17
Henriksson, J.,	29
Hermelin, O.,	287
Hermelin, T.,	328

	Nos.
Herzog, P.,	87
Hoeganaes Coal Mining Co.,	122, 127, 128, 257
Holck, Helene,	422
Holmen Paper Mills & Manufacturing Co., Lim.,	83
Horndal Iron Works Co., Limited,	46 h, 49 h, 52 h, 55 h
Hult Factory,	237
Husqvarna Arms Manufacturing Co., Lim.,	62, 137, 184, 216, 220
Hörlin, Hugo,	374
Igelström, L. J.,	47
Ingelotz, Aurora,	415
Jansson, Eug.,	288, 342
Johansson, C. A.,	98
Johansson, Carl O.,	99
Jolin, Ellen,	329
Jonason, A.,	391
Jonson, Hilma,	183
Jonsson, A. J.,	253
Juel, Rosalie,	425
Jungstedt, Ax.,	289
Jönköping Match Manufacturing Co., Lim.,	74
Karlholm, Hedda,	438
Karlström, Mathilda,	188
Kessel & Röhl,	40
Keyser, Elisabeth,	290
Kilafors Iron Works, Lim.,	46 i, 49 i, 55 i
Kindborg, J.,	291
Kjellin, C.,	292
Kohlswa Iron Works,	46 j, 49 j, 55 j, 66 j
Krapelien, Emma,	209
Kreüger, Nils,	293
Kronberg, Julius,	294
Kullberg, Gust. & Co.,	3

	Nos.
Kulle, J.,	295
Kulle, Thora,	110, 169, 176, 410
Kuntze & Co.,	359
Köhler, I. G.,	123
Langborg, Helmer,	350
Larsson, Carl,	296, 330
Laxå Iron Works Co., Lim.,	461, 491, 551
Laxå Sulphite Wood Pulp Mill,	27
de Laval, Gustaf,	60
Lenning's Weaving School,	166, 365
Liberg, B. & O.,	351
Liljeblad, Fr.,	259
Liljefors, Bruno,	297, 343
Liljeholmen Wine Manufactory,	18, 33
Liljequist, P.,	238, 241
Lindberg, Lydia,	212
Lindberg, L. F.,	221
Lindell, Per,	375
Linderoth, G. W.,	164
Lindgren, C. A. & Co.,	19
Lindgren, Hilda,	433
Lindholm, B.,	298
Lindman, Ax.,	299
Lindmansson, J. A. W.,	88
Lindström, A. M.,	300
Lindström, E. F.,	255
Lundberg, J. L. & Co.,	20
Lundberg, Th.,	267
Lundin, Hulda,	361, 409
Lundström, Ernst,	301
Lysell, Aug.,	4
Lyth, G. W.,	222
Löfgren, A. W.,	101
Löfmark, L. O.,	102

	Nos.
Malmö Wood Pulp Manufacturing Co., Lim.,	28
Mars Co., Lim.,	389
Matton, Ida,	263
Mattsson, A.,	103
Mechanical Joinery Manufacturing Co., Lim., by J. O. Wengström, 119	
Melander, A. E.,	369
Melkersson, J. A.,	133
Meukow, Anna,	424
Meukow, Gustava,	429
Meyer, Otto & Co.,	223
Minnesberg Brick Works Co., Lim.,	124
Mittag-Leffler, G.,	376
Monthan, Maria,	144
Munksjö Paper Mills Co., Lim.,	80, 82,
Munktell, J. H., Paper Mills Co., Lim.,	79
Möllenborg, Gustaf,	152, 155
Möller, Sara,	192
Näsman, E. A.,	232
Netzel, Sigrid,	145
Nilsson, Emilie	193, 414
Nilsson, Vitalis,	89
Nordenfalk, Elisabeth,	189, 201
Nordenfalk, Elsa,	204 a
Nordenfelt, Maria,	205
Nordenskiöld, A. E.,	405
Nordenskiöld, G.,	403
Nordenström, G.,	59 a
Nordgren, Johanna,	194
Nordqvist, Marianne,	213, 430
Nordström, Karl,	302, 344
Norrman, H.,	303
Norrman, Hilda,	195
Norrström, C. Hj.,	, 138
Norstedt, P. A. & Sons Co., Lim.,	377, 378, 382

	Nos.
Nyström, Alfr.,	264
Nyström, Hjalmar,	34
Nääs Normal School for Training Sloyd-Teachers,	362
Ohlsson, Carl, & Hansson Bros.,	5
Olsson, A.,	392
Olsson, Bengta,	412
Olsson, Christina,	172
Olsson, Cilluf,	III, 173, 177, 181, 411
Olsson, O.,	393
Palmcrantz Co., Lim.,	22
Pauli, G.,	304
Pauli, Hanna,	305
Paykull, Gustaf von,	30
Persson, Eleonora,	182
Pettersson, Hilda,	427
Posse, Knut,	31
Posse, Nils,	352
Pålsson, Anna,	182 a
Radiator Co., Lim.,	11
Randel, Charlotte,	416
Reijmyre Glass Works Co., Lim.,	140, 141, 148
Retzius, Anna,	431
Risling, Maria,	190
Rose, J. L.,	389 a
Rosen, G. von,	306, 337
Rosenberg, Edv.,	307
Rosenberg, Elisabeth,	196
Rosman, Sven,	406
Royal Hydrographic Office,	383
Royal Institute of Gymnastics,	346
Royal Pilotage and Light-house Board,	70
Royal Swedish Sailing Club,	353

	Nos.
Rudbeck, Hildur,	208
Rudolphi, Carin,	197
Rönström, Hilda,	198
Rörstrand Co., Lim.,	41, 129, 130
Saltza, Carl Fr. von,	308
Sammland, R.,	394
Sandviken Iron Works Co., Lim.,	46 m, 66 m, 242
Santesson, Fr. Abr.,	159, 210
Scanian Cement Co., Lim.,	42
Scanian Cement Foundry Co.,	45
Scanian Vinegar Manufactory,	32, 71, 73
Scholander, Sv.,	115, 117
Schuberth, Mathilda,	421
Schultzberg, A.,	309
Schulzenheim, Ida von,	310
Schöldström, Otto,	104
Schönow, C. L. & Co.,	118
Sebenius, J. L.,	51
Sjöberg, Axel,	395
Skromberga Coal & Clay Manufacturing Co., Lim.,	125, 131, 258
Sohlberg, K. H.,	386
Sparre, Caroline,	174
Sparre, Emma,	311
Sparre, Sophie,	175
Stange, Elisabeth,	199
Stenman, Aug.,	233
Stockumla Estate,	9
Stolpe, Marie-Louise,	312
Stora Kopparbergs Bergslag,	46 k, 49 k, 52 k, 55 k, 228 k
Strindberg, A. G.,	260
Stridsberg & Biörck,	239, 244
Sundgren, Olof,	24
Surahammar Iron Works Co., Lim.,	46 n, 66 n, 67 n, 228 n
Svalling, G. E. & Co.,	23, 219

	Nos.
Svederus, M.,	211
Svensson, Beda,	178
Svensson, C. F.,	313
Svensson, C. P.,	105
Svensson, Emma,	153
Svensson, J. V.,	225
Swedish Industrial Art Society,	121
Swedish Snow-skate Club,	349
Swedish Tourist Club,	440
Söderfors Iron Works, Co., Lim.,	46 o, 49 o, 52 o, 55 o, 66 o, 68 o, 228 o, 240 o, 254 o
Söderman, N. Aug.,	265
Södertelje Match Manufactory,	75
Sörensen, N. G.,	234
Technical School of Eskilstuna,	366
Technical School of Stockholm,	367
Tengwall, Andreas	91
Thegerström, R.,	314
Thörne, Alfr.,	317
Tirén, J.,	315, 331
Tofverum Dairy,	10
Topographic Division of the General Staff,	381
Trädgårdh, C.,	316
Tull, N. P.,	357
Uddeholm, Co.,	53, 56, 58, 229, 235, 256
Uhlin, Ebba	202
United Lime Quarries Co., Lim.,	43
Universal Turnery Co., Lim.,	146
Vallgren, Antoinette,	318
Vibrator Co., Lim.,	358
Vulcan Match Manufacturing Co., Lim.,	76

Nos.		Nos.
211	Wahlberg, Alfr.,	319
178	Wahlström, Charl.,	320
313	Wahlström & Widstrand,	396
105	Wallander, Alf,	321, 345
153	Wallåkra Coal Mining Co., Lim.,	126
225	Wedholm, C. A.,	12
121	Wengberg, Clara,	417
349	Westman, Edv.,	322
440	Wickbom, Charlotte,	112
	Wickman, G.,	399
40	Widebeck, Maria, & Wästberg, Carin,	436
65	Widén, C. O. F.,	95
75	Wiklund, W.,	139
34	Wiman, E. A.,	224, 226
	Winborg, Th. & Co.,	7, 13, 14, 21
66	Wisby Cement Manufacturing Co., Lim.,	44
67	Wrede, Hilda & Agathe,	214
91		
14	Zickerman, Lilli,	206, 420
17	Zorn, And. L.,	323, 338
31		
10	Åhrberg, Ebba,	113, 418
31	Åman, Emy,	147
6	Åkerman, W.,	266
7	Åtvidaberg Joinery Manufactory,	120
6		
2	Öberg, C. O.,	244
3	Österby Iron and Steel Works Co., Lim.,	48, 50, 54, 57, 230
6	Österlind, Allan,	324

Faint, illegible text, likely bleed-through from the reverse side of the page.

1.

of
tic
fe
sy

2.

3.

DEPARTMENT A.

AGRICULTURE, FOOD AND ITS ACCESSORIES, FORESTRY AND FOREST PRODUCTS, MACHINERY AND APPLIANCES.

GROUP 2. BREAD, BISCUITS,
PASTES, STARCH, GLUTEN,
ETC.

CLASS 13.¹

1. Chrysander, J. & Co., Confectioner, Gothenburg.

Pastry; confections.

Exhibition manufacturing and sale of sundry varieties of pastry and confectionery, as various kinds of almond-confectionery, cream-chocolate, ices; sale of syrups and cooling drinks.

*

GROUP 3. SUGARS, SYRUPS,
CONFECTIONERY, ETC.

CLASS 27.¹

2. Chrysander, J. & Co., Confectioner, Gothenburg. (See No. 1).

Confections.

*

GROUP 6. PRESERVED MEATS
AND FOOD PREPARATIONS.

CLASS 36.

3. Kullberg, G. & Co., Gothenburg.

Swedish caviar.

Preserved craw-fish tails,

Prev. aw. London 1883, Antwerp 1885, Liverpool 1886, Havre 1887, Sweden 1891.

4. Lysell, Aug., Vice Consul, Lysekil.

Herring and Anchovy Business.

Agent in Chicago: Fridolf Lysell, White Star Line, 54 S. Clark Street.

Superior-, Oyster-, Delicacy, and Skin- and Boneless Anchovy.

Matjes-, and Superior Herring for snacks, boned or otherwise, in tomato sauce.

Pickled Herring for snacks, not boned.

Business established in 1868. Yearly production 500,000 boxes.

Prev. aw. Philadelphia 1876, London 1883, Paris 1886, Copenhagen 1888, Cassel 1890, Sweden 1876, 1878, 1880, 1888, 1890, 1891.

5. Ohlsson, Carl, & Hansson Brothers, Gothenburg.

Matjes herring.

Pickled and

Spiced herring.

Anchovy.

Herring-balls and pudding.

Fish-balls and pudding.

CLASS 37.

6. Lindros & Co., Stockholm.

(Ex t.)

Beef-steak sauce.

Dept. A exhibited in Agricultural Hall except

¹ Swedish Pavilion,

² Dairy Building.

7. Winborg, Th. & Co., Stockholm.

Sauces to be used for food and refreshment.

Lactoserine-cocoa.

Lactoserine-coffee substitute.

Mustard.

Vinegar.

Prev. aw. Copenhagen 1888, Sweden 1866, 1889, 1891.

*

GROUP 7. THE DAIRY AND DAIRY PRODUCTS.

CLASS 43.

8. S. Barnekows Tekn. Kem. Laboratorium, *Technical-Chemical Laboratory*, by S. Barnekow, Malmö.

Sole agent for U. S. A., Daniel Hale, 142 & 144 South Water Street, Chicago.

Extract of cheese-runnet.

Prev. aw. Linz a/Donau 1881, Amsterdam 1883, Finland 1884, 1887, Buchow 1887, Parma 1887, Pavia 1890, Sweden 1879, 1880, 1881, 1883, 1884, 1885, 1886, 1889, 1890, 1891.

9. Stockumla Gård, *Stockumla Estate*, Dingtuna.

Cheese, one year old, made exclusively from sweet milk with no extra mixtures, and of solid substance.

10. Tofverums Mejeri, *Tofverum Dairy*, by Hugo de Maré, Wimmerby.

Swedish cheese, called »Herrgårdssost».

CLASS 44.

11. Aktiebolaget Radiator, *Radiator Co. Lim.*, Stockholm.²

Machine for the direct extraction of cream or butter from milk. The *Radiator* machines, of which each is a com-

² Exhibits in Dairy Building.

plete substitute for a Separator with churn, will extract either butter or cream from milk. The milk- and ice-pails required, are combined in the machines in such a manner that buttermaking and skimming may proceed at proper times.

12. Wedholm, C. A., Nyköping.

Milk-cans.

Cheese-frames.

Milk-strainer.

Prev. aw. Sweden 1891.

*

GROUP 8. TEA, COFFEE, SPICES, HOPS, AND AROMATIC AND VEGETABLE SUBSTANCES.

CLASS 45.

13. Winborg, Th. & Co., Stockholm. (See No. 7.)

Lactoserine-cocoa.

Lactoserine coffee substitute.

CLASS 47.

14. Winborg, Th. & Co., Stockholm. (See No. 7.)

Mustard.

*

GROUP 11. WHISKIES, CIDER, LIQUEURS AND ALCOHOL.

CLASS 69.

15. Bagge, Axel & Co., Gothenburg.

Sole agents for U. S. A., Messrs H. A. Bötjer & Co., 77 Water Street, New-York.

Arrac Punch. The punch has a pure taste of arrac, and contains neither glycerine nor glucose, it is carefully prepared from pure ingredients.

Prev. aw. Vienna 1873, Antwerp 1885, Paris 1889.

16. Cederlund, J. & Sons,
Stockholm.

Sole agents for U. S. A., Luyties
Brothers, New-York.

Genuine Caloric Punch.

Business established 1822.

Prev. aw. Paris 1878, Bordeaux 1882,
Amsterdam 1883, Boston 1883, Nice 1884,
London 1884, 1885, New Orleans 1884,
1885, Antwerp 1885, Barcelona 1888, Spa
1891.

17. Helleberg, A. L. & Son,
Stockholm.

Swedish Punch.

18. Liljeholmens Vinfabrik,
Liljeholmen Wine-Manufactory,
Carl Falkman, Stockholm. (See
No. 33.)

Swedish Punch.

19. Lindgren, C. A. & Co.,
Stockholm.

Swedish Punch.

Prev. aw. London 1884, 1885, Ant-
werp 1885, Copenhagen 1888, Paris 1889,
Sweden 1891.

20. Lundberg, J. L. & Co.,
Stockholm.

Caloric Punch.

CLASS 71.

21. Winborg, Th. & Co., Stock-
holm. (See No. 7.)

Vinegar.

*

GROUP 16. FARMING TOOLS,
IMPLEMENTS AND MACHINERY.

CLASS 86.

22. Aktiebolaget Palmcrantz
& Co., *Palmcrantz Co. Lim.*,
Stockholm.

Harvest machines for animal mo-
tive power.

23. Svalling, G. V. & Co.,
Mölnortorp.¹

Scythes.

Cut- and thrust weapons.

Some of the fencing swords have been
used at the Royal Institute of Gymna-
stics during several years and show the
exceptional strength and solidity of these
arms. The articles are made of the best
Swedish steel; the so-called Turkish da-
masceened blades are manufactured from
three kinds of steel, hammered 200 or
300 times, by which process they are
rendered enormously strong and proof
against breaking.

Business established in 1871.

Prev. aw. Russia 2, Vienna 1, Fin-
land 2, Sweden 5 medals.

CLASS 87.

24. Sundgren, Olof, Land-sur-
veyor, Östersund.

Agent in Chicago: Ragnar Sohlman,
Grand Crossing, Chicago.

Velox, centrifugal winnower,
invented by the exhibitor, is principally
intended for the assorting of sowing-
seed, and to act as an expedient for seed
improving.

Prev. aw. Vienna 1890, Alsen 1891.

*

GROUP 19. FORESTRY,
FOREST PRODUCTS.

CLASS 109.

25. Gustafsfors Fabrikers
Aktiebolag, *Gustafsfors Ma-
nufacturing Co. Lim.*, Gustafsfors.

Wood pulp, manufactured by the
Sulphite method.

Wrapping paper.

26. Gysinge Aktiebolag, *Gy-
singe Co. Lim.*, Gysinge.

Agent in Chicago: Ragnar Sohlman,
Grand Crossing, Chicago.

¹ Exhibits in Swedish Pavilion.

Unbleached cellulose, manufactured by the Sulphite method from spruce wood. The substance is very easily bleached and is free from raw splinters and refuse.

Prev. aw. Sweden 1891.

27. **Laxå Bruks Aktiebolag,**
Laxå Sulphite Wood Pulp Mill,
Laxå.

Wood pulp, manufactured by the Sulphite method, in different stages.

Cellulose in different stages.

28. **Malmö Trämassefabriks**
Aktiebolag, *Malmö Wood*
Pulp Manufacturing Co. Lim.,
Malmö.

Wood pulp, manufactured by the Sulphite method.

CLASS 114.

29. **Henrikson, J.,** Private Teacher,
Mellerud.

Forest-seed.

Yearly production 2,000—4,000 lbs.

Prev. aw. Amsterdam 1883, Sweden 1882, 1887, 1890, 1891, Norway 1887.

30. **Paykull, Gustaf von,** Baron,
Estate Owner, Walloxsäby,
Knifsta.

Seed from Swedish pine (*Pinus sylvestris*); price pr. pound in America 1 \$ 25 cts.

Seed from Swedish spruce (*Pinus abies*, Linné); price pr. pound in America 1 \$.

Seed from Alsike (Swedish) clover (*Trifolium hybridum*); price pr. pound in America 50 cts.

Seed from Swedish red clover (*Trifolium pratense*); price pr. pound in America 50 cts.

Perennial rye from the country of the Don Cosacks; price pr. pound in America 2 \$.

Orders may be sent either direct (to Sweden) or may be put into the letter-box of the show-case.

Prev. aw. Paris 1878, 1889, Antwerp 1885, Buda-Pesth 1885, Brussels 1888, Copenhagen 1888, Sweden 1881, 1882, 1886, 1890, 1891, 1892, Norway 1887.

31. **Posse, Knut,** Count, Bergqvara, Reppe.

Sowing seed from fir and spruce, ripened in warm air at the least possible degree of heat. Yearly production 4,500 lbs.

Prev. aw. Amsterdam 1883, Edinburgh 1884, Antwerp 1885, Buda-Pesth 1885, Sweden 1880, 1882, 1891, Norway 1877.

CLASS 117.¹

32. **Skånska Ättikfabriken,**
Scanian Vinegar Manufactory,
by Wilhelm Wendt, Perstorp.
(See No. 71.)

Charcoal.

Beech-wood tar; birch-wood-tar; wood-tar oil.

¹ Exhibited in Swedish Pavilion.

DEPARTMENT B.

*HORTICULTURE, VITICULTURE, POMOLOGY,
FLORICULTURE, ETC.*

GROUP 21. POMOLOGY, MANU-
FACTURED PRODUCTS, METHODS
AND APPLIANCES.

CLASS 143.

33. Liljeholmens Vinfabrik,
*Liljeholmen Wine Manufac-
tory*, Carl Falkman, Stock-
holm.

Manufactory for
Berry-syrups,

Hedge-wines and
Swedish Punch.

Agents for U. S. A.: J. C. Druck-
lieb & Co., 11 Stone Street, New-York.

The wines are made from Swedish
berries and are free from injurious mix-
tures. In strength they approach that
of Sherry and Claret; one kind by its
great percentage of sugar resembles Ru-
ster and Sherry Muscatel.

Prev. aw. Sweden 1860, 1861, 1866,
1868, 1871, 1876, 1892.

DEPARTMENT D.

*FISH, FISHERIES, FISH PRODUCTS,
AND APPARATUS FOR FISHING.*

GROUP 40. PRODUCTS OF
THE FISHERIES AND THEIR
MANIPULATION.

CLASS 275.

34. Nyström, Hj., Gothenburg.

Guano and fodder, manufactured
from herring.

The method employed invented by
the exhibitor.

The patent for sale.

Depts B and D exhibited in Agricultural Hall.

DEPARTMENT E.

MINES, MINING, AND METALLURGY.

GROUP 42. MINERALS, ORES,
NATIVE METALS, GEMS AND
CRYSTALS. GEOLOGICAL
SPECIMENS.

CLASS 290.

35. Sveriges Geologiska Undersökning, *Geological Survey of Sweden*, Stockholm.

Polished and rough specimens of valuable Swedish stones, used for building and monumental purposes, as granite, porphyry, marble, sandstone, etc.

Ores from the principal Swedish mining districts.

Models (on glass) of two Swedish mines (Gladhammar and Ljusnarsberg).

Detailed geological maps of mining-districts, sections of mines.

General geological map of the southern half part of Sweden.

Map showing location of quarries etc.

Geological maps, showing the surface distribution of the different quaternary deposits as well as of the uncovered parts of the underlying rocks, on the scales 1:50,000, 1:100,000 (showing also the topography), and 1:200,000 etc., comprising different provinces and other large districts of Sweden. Also all the other maps and printed papers published by the Geological Survey.

Prev. aw. London 1862, Paris 1867, 1878, Copenhagen 1872, 1888, Vienna 1873, 1890, Philadelphia 1876, Madrid 1883, Sweden 1866, 1871, 1881, 1882, 1883, 1886, 1891.

CLASS 291.

36. Andersson, Axel Reinhold, Preparator at the Mineralogic-Geologic Institution of the University of Upsala.

Thin polished specimens of rocks and fossils for microscopic studies.

37. Sveriges Geologiska Undersökning, *Geological Survey of Sweden*, Stockholm. (See No. 35.)

Ores from the principal Swedish mining-districts.

*

GROUP 44. BUILDING STONES,
MARBLES, ORNAMENTAL STONES,
AND QUARRY PRODUCTS.

CLASS 296.

38. Gerlach, Hugo, Warberg.
Polished granite slabs.

39. Grafversfors Stenhuggeri och Sliperi, *Grafversfors Stone Works*.

Red slabs.

Red (Swedish rose) square granite monument of American model.

Urn with pedestal in blue-black granite.

Columns of various kinds of granite.

Pedestal of pale red granite.

Ornamental urn of red granite.

40. Kessel & Röhls Granit-aktiebolag, *Kessel & Röhls*

Granite Works, Wånevik, Påskallavik.

Polished slabs in various colors.

*

GROUP 46. GRAPHITE AND ITS PRODUCTS. CLAYS AND OTHER FICTILE MATERIALS AND THEIR PRODUCTS; ASBESTOS ETC.

CLASS 304.

41. *Rörstrands Aktiebolag*, *Rörstrand Co. Lim.*, Stockholm. (See No. 129.)

Feldspar (kalium-feldspar and sodium-feldspar).

*

GROUP 47. LIMESTONE, CEMENTS AND ARTIFICIAL STONE.

CLASS 309.

42. *Skånska Cement-Aktiebolaget*, *The Scanian Cement Co. Lim.*, Malmö, Sweden.

Cable address: Cangoro.

Joint stock \$ 400,000.

Objects of cement, exhibited in common with the Scanian Cement Foundry Co. Lim. Show-case in the Swedish Building, containing

Raw materials and ready made

Portland cement of superior quality.

Cement in barrels.

Registered Trade Mark:

Prev. aw. Moscow 1872,

London 1874, Philadelphia 1876, Paris 1878, Copenhagen 1888, Stockholm 1886, and several others.

43. *Aktiebolaget Förenade Kalkbrotten*, *The United Lime Quarries Co. Lim.*, Malmö, Sweden.

Joint stock \$ 120,000.



Pure limestone for mortar and for the use of chemical manufactories. The articles are exported from the port of the Company at Limhamn, by the agency of »Fællesagenturet for Faxe og Limhamns Kalkbrud», Copenhagen.

44. *Aktiebolaget Wisby Cementfabrik*, *Wisby Cement Manufacturing Co. Lim.*, Stockholm. Telegraphic address: Cement, Wisby.

Superior Portland cement, tested at the Test Works for building materials in New-York, Berlin, Stockholm, Gothenburg, Christiania, etc. and praised for its superior qualities.

CLASS 311.

45. *Aktiebolaget Skånska Cementgjuteriet*, *The Scanian Cement Foundry Co. Lim.*, Malmö, Sweden.

Joint stock \$ 133,333.

Largest manufactory in Scandinavia for cement articles. Branch business in Stockholm and Gothenburg.

The exhibits are placed in the front staircases and principal façades of the Swedish Building, and consist also in Pavement tiles of polished cement mosaics. In common with the Scanian Cement Co. Lim. a Show-case of Polished cement mosaics and Pressed cement stone.

Business started in 1886.

Prev. aw. Copenhagen 1888, Vienna 1890, Sweden 1891.

*

GROUP 49. METALLURGY OF IRON AND STEEL, WITH THE PRODUCTS.

CLASS 322.

46. *Jernkontorets Kollektivutställning*, *Collective Exhi-*

bition of the Swedish Iron Masters.

The Jernkontoret is an association composed of the iron-masters of Sweden, nearly all of whom are members.

The object of the Association is the promotion of the Swedish Iron Industry, which it effects by advancing money to its members, to assist them in extending their works; and by making appropriations for experiments, and the investigation of new processes and improvements.

The Association meets every third year, in Stockholm, to discuss business matters of common interest, as well as Technical questions. During the interval between the regular meetings of the Association, the management of its business is entrusted to five ordinary and five extra administrators, who are elected at the regular meetings.

The Association was founded in 1745; its capital accrued from the annual contributions of the iron works is \$1,366,206, its income for 1891 was \$68,304, and expenses \$67,148.

Prev. aw. Vienna 1873, Philadelphia 1876, Paris 1878, Madrid 1883.

a) **Aktiebolaget Ankarsrums Bruk, Ankarsrum Iron Works Co. Lim.**, by A. de Maré, Ankarsrum, Sweden.

Ingots, blooms and billets of Lancashire- and Martin-metal.

Samples of rolled Lancashire- and Martin-metal.

Brands: for Lancashire iron:



AM T-t

$\frac{M}{M}$

for Martin-metal:

Prev. aw. London 1862, Paris 1867, 1878, Moscow 1872, Copenhagen 1872, 1888, Vienna 1873, Philadelphia 1876,

Antwerp 1885, Barcelona 1888, Sweden 1866.

b) **Avesta Jernverks Aktiebolag, Avesta Steel Works Co. Lim.**, by H. A. Cornelius, Avesta.

Agents for U. S. A., I. H. L. Todd, 67 & 69 William Street, New-York.

Iron ores.

Ingots and billets of Martin- and Bessemer-steel.

Quality tests of the same metal as: knots, twisting tests, tests for bending by cold process, for tensile strength, for showing the fracture, of redshortness.

Steel bars, round, square, flat and octagonal; *fancy steel*.

Brands:

AVESTA ★ **AE** ★

c) **Aktiebolaget Bofors-Gullspång, Bofors-Gullspång Co. Lim.**, by C. Danielsson, Bofors, Sweden.

Iron ores from the mines of Striberg, Timansberg, Haggrufve, Lerberg, Slotterberg, Rösberg and Wikers.

Pig-iron.

Blast-furnace slag.

Steel made by the Siemens-Martin process.

Bar-iron, fine iron and wire-iron manufactured by the Lancashire process.

Drawn wire and wire-rope.

Cast steel goods of different kinds.

Materials of war as: ingots and shot for cannons.

Brands: for

Lancashire wire-rods and bar-iron;

CBF



for Siemens-Martin steel,

BOFORS.SM-n

Prev. aw. Paris 1867, 1878, Vienna 1873, Philadelphia 1876, Madrid 1883, Blidah 1884, Sweden 1866, 1878, 1881.

- d) **Degerfors Jernverk**, *Degerfors Iron & Steel Works*, Proprietors Strömsnäs Iron Works Co. Lim., Degerfors.

Ingots and steel bars, broken to show the fracture.

Samples of bar-iron and sheet-iron, bent.

Wire coils.

Rolled pipes.

Small objects of sheet-iron.

Hammers and stone mason's tools.



DEGERFORS
W

Prev. aw. Barcelona 1888.

- e) **Fagersta Bruks Aktiebolag**, *Fagersta Iron and Steel Works Co. Limited*, by Chr. Aspelin, Westanfors.

Iron ores from the mines of Stortägsgrufvan, Storgufvan, Granrotsgrufvan and Malmkärragrufvan.

Pig-iron, low in phosphorus and sulphur.

Siemens-Martin steel-ingots.

Forged and rolled steel.

Wire, ditto for fencing.

Hollow ingots for tubes.

Gun-barrels.

Springs.

Sledges.

Sundry tools.



Brands



Prev. aw. Paris 1867, Copenhagen 1872, London 1873, Vienna 1873, Phi-

adelphia 1876 5 medals, Antwerp 1885, Barcelona 1888.

- f) **Aktiebolaget Finspongs Styckebruk**, *Finspong Gun Factory Co. Lim.*, *Iron Works of Finspong and Grutjöl*, Skönarbo.

Pig-iron for forging, annealing and common castings.

Rolled iron and steel.

Wire.

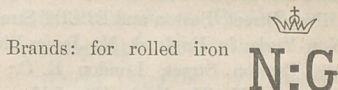
Wire netting and wire-cloth.

Horse-shoes.

Tools for working of stone, implements for lumbering.

Cut-nail, wire-nail, tacks, etc.

Axes.



for steel and manufactures

FINSPONG

for pig-iron and cast-iron, nails and wire



for annealed pig-iron



Prev. aw. First prices in Moscow, Vienna, Philadelphia, London, Madrid, Paris, Copenhagen, Sweden.

- g) **Forsbacka Jernverks Aktiebolag**, *Forsbacka Iron Works Co. Lim.*, by Chr. Lundeborg, Forsbacka, Margrethill, Gefle.

Ores.

Pig-iron for the manufacture of Bessemer steel, with the *blast-furnace slag* belonging to it;

Products of the Bessemer process, viz: series of broken *ingots* for showing the fracture, rolled and forged *billets*.

Forged steel for tools.

Series of tests for tensile strength, and quality tests.

Sundry tools showing the different purposes for which the steel is used.

Brands:

FORSBACKA FJAB STÅL SWEDEN.

- h) **Horndals Jernverks Aktiebolag, Horndal iron Works Co. Limited**, by J. Michaeli, Stockholm.

Representatives in U. S. America and Canada: Messrs Jere Abbott & Co., 35 Oliver Street, Boston and 23 Cliff Street, New-York; in England, Mr James Bird, 118 Cannon Street, London E. C.; in Germany, Mr Th. Book, Elberfeld.

Iron-ores with low percentages of phosphorus and sulphur, some manganese.

Charcoal pig-iron with low phosphorus and sulphur percentage for steel, bar-iron for crucible cast-steel, horse-nail, wire and rivet-rods.

Blooms made by the Lancashire refining process (charcoal fire).

Billets or reheated blooms for best wire and horse-nail rods.

Bar-iron for crucible cast-steel with very low phosphorus, viz 0,014—0,016 % and sulphur 0,005—0,007 %.

Horse-nail rods, flat, straight in bundles and in coils.

Wire-rods for finest drawn and best quality wire, telegraph and telephone purposes, in heavy strings up to 120—130 lbs.

Rivet-rods, all sizes and in heavy strings for cold made rivets.

Brands: for bar-iron for crucible cast-steel



for horse-nail rods



for wire and rivet-rods



- i) **Kilafors Jernverks Aktiebolag, Kilafors Iron Works Lim.**, by C. A. Rettig, Kilafors, Sweden.

Pig-iron.

Bar-iron.

The products of these Iron Works are chiefly exported to England and Germany, where they are used for the manufacturing of cast-steel and blister-steel on account of the solidity and purity of the bar-iron.

Price in Sweden: pig-iron £ 5 Sterl. pr. ton,

bar-iron £ 12 Sterl. pr. ton.

Brands: for pig-iron



for bar-iron



Prev. aw. London 1862, Paris 1867, Philadelphia 1876, Sweden 1866, 1882.

- j) **Kohlswa Bruk, Kohlswa Iron Works**, by Thorè Lindberg, Kohlswa.

Iron ores.

Pig-iron with low percentage of phosphorus and manganese.

Wire and nail-rods made by the Lancashire process, of softest quality.

Nail-sheet made by the Martin process for the manufacturing of horse-shoe-nails, cold.

Locomotive-wheel that has been exposed to hydraulic pressure.

Brands: for pig-iron **DKH**

for Lancashire and cast-iron wire and nail



Prev. aw. Antwerp 1885.

k) **Stora Kopparbergs Bergslags Aktiebolag**, by E. J. Ljungberg, Falun.

Agent for U. S. A., and Canada: Henry Hastings, Boston, Mass.; James Bird, Cannon Street, London E. C.; Louis Friedländer, 10 Rue de Mont Thabor, Paris; Wilh. Guillaume, Köln a/Rh.; Gerdes & Co., Constantinople; G. Bildt, Bombay.

Iron ore; production 1891 tons 80,000
 Charcoal pig-iron; do. » » 52,000
 Bessemer ingots; do. » » 25,000
 Siemens-Martin ingots; do. » » 26,000
 Charcoal iron blooms; do. » » 7,000
 Rolled iron and steel; do. » » 45,000
 Hammered steel; do. » » 300
 Hammered iron bars; do. » » 1,200
 Horse-shoe-nails; d:o » » 600
 Tools.

Brands: for iron and steel



LX



J.A.&C^o

AMES

l) **Laxå Bruks Aktiebolag**,
Laxå Iron Works Co. Lim., by
 C. C:son Lindberg, Laxå.

Iron ore.

Charcoal pig-iron.

Bar-iron and

Fine-iron distinguished by superior uniformity and softness.

Brands: for pig-iron **CD**

for bar-iron  **HS^H** 

Prev. aw. Moscow 1872, Philadelphia 1876, Sweden 1866, 1883.

m) **Sandvikens Jernverks Aktiebolag**, *Sandviken Iron Works Co. Lim.*, by A. H. Göransson, Sandviken.

Wheel tires.

Prev. aw. London 1862, Moscow 1872, Philadelphia 1876, Sweden 1860, 1866, 1882.

n) **Surahammars Bruks Aktiebolag**, *Surahammar Iron Works Co. Lim.*, by P. Petersson, Surahammar, Sweden.

Axle for railway waggon wheels, manufactured of puddle-steel, bent cold after having run 765,000 kilometers on the Swedish State Railway.

Two new axles of puddle-steel and two of Siemens-Martin steel.

Railway-wheel, the centre of which is forged solid of puddle-iron, the tire of Bessemer steel, fastened to the centre with safety-rings.

Two pieces cut out of the tire for showing the fastening of the tire to the centre of the wheel.

Bowls of pressed steel-plates for milk-separators and butter-extractors.

Brands: for Martin-metal



for puddle-steel and iron **Sh**

Prev. aw. Paris 1855, 1867, 1878, London 1862, Moscow 1872, Copenhagen 1872. Since 1878 the Surahammar Co. Lim. has not taken part in any exposition before the present one.

- o) **Söderfors Bruks Aktiebolag**, *Söderfors Iron Works Co. Lim.*, by P. G. Tamm, Söderfors, Sweden.

Ores from the mines of Dannemora, Brunna and Vigelsbo.

Pig-iron for the Walloon, Lancashire and Martinprocess as well as for export.

Broken steel ingots of different degrees of hardness.

Broken steel billets, rolled and forged.

Broken blooms.

Broken Walloon-iron for the manufacture of crucible steel.

Iron and steel-bars of various sizes, rolled and forged.

Products of Martin-steel manufacture:

Tools, files, springs for railway-cars and locomotives.

Buffer coil-springs.

Products of cast Martin-metal:

Rail- and tramway-wheels, system Wanner.

Anchors.

Anvils.

Cog-wheels.

Parts of steam-engines and other machinery, etc.

Brands: for pig-iron



for Walloon bar-iron

SÖDERFORS

for Lancashire bar-iron



for Martin-steel



For the other brands see special supplement!

Prev. aw. Paris 1855, London 1862, Copenhagen 1888, Sweden 1866, 1882, 1886.

47. **Igelström, L. J.**, Sunnemo, Wermland.

Hausmannite iron-ore from the manganese iron-mines of Sjögrufva, situated in the vicinity of Grythytte Railway Station.

The ore with 35 % of metallic manganese costs 4 £ pr. ton delivered in Gothenburg; with 50 %, 5 £ pr ton. This proof costs 3 \$.

48. **Aktiebolaget Österby Bruk**, *Österby Iron and Steel Works Co. Lim.*, by A. Lindman, Dannemora, Sweden.

Iron ores from the mines of Dannemora.

Pig-iron, manufactured exclusively from Dannemora ore, fuel charcoal.

Bar-iron, manufactured by the Walloon process, fuel charcoal.

Cementation steel.

Crucible steel in ingots.

Crucible steel in bars and wire.

Blanks for milling-machine cutters and sundry tools.

Brands: for Walloon bar-iron and cementation steel ○○; for crucible steel ingots, bars and wire

DANNEMORA or DORA

Prev. aw. London 1851, 1862, 1873, Paris 1855, Copenhagen 1872, Vienna 1873, Bogota 1874, Philadelphia 1876, Sweden 1866.

CLASS 324.

49. **Jernkontorets Kollektivutställning**, *Collective Exhibition of the Swedish Iron Masters*. (See No. 46.)

- c) **Aktiebolaget Bofors-Gullspång**, *Bofors-Gullspång Co. Lim.*, by C. Danielsson, Bofors. (See No 46 c.)

Pig-iron.

Blast-furnace slag.

- e) **Fagersta Bruks Aktiebolag**,
*Fagersta Iron and Steel Works
Co. Limited*, by Chr. Aspelin,
Westanfors. (See No. 46 e.)

Pig-iron, low in phosphorus and sulphur.

- f) **Aktiebolaget Finspongs
Styckebruk**, *Finspong Gun
Factory Co. Lim. Iron Works
of Finspong and Grytjöl*, Skön-
narbo. (See No. 46 f.)

Pig-iron for forging, annealing and common castings.

- g) **Forsbacka Jernverks Ak-
tiebolag**, *Forsbacka Iron
Works Co. Lim.*, by Chr. Lun-
deberg, Forsbacka, Margrethill,
Gefle. (See No. 46 g.)

Pig-iron for the manufacture of Bessemer-steel, with the blast-furnace slag belonging to it.

- h) **Horndals Jernverks Aktie-
bolag**, *Horndal Iron Works
Co. Lim.*, by J. Michaeli, Stock-
holm. (See No. 46 h.)

Charcoal pig-iron with low phosphorus and sulphur percentage for steel, bar-iron for crucible cast-steel, horse-nail, wire and rivet-rods.

- i) **Kilafors Jernverks Aktie-
bolag**, *Kilafors Iron Works
Lim.*, by C. A. Rettig, Kilafors,
Sweden. (See No. 46 i.)

Pig-iron.

- j) **Kohlswa Bruk**, *Kohlswa Iron
Works*, by Thore Lindberg,
Kohlswa. (See No. 46 j.)

Pig-iron with low percentage of phosphorus and manganese.

- k) **Stora Kopparbergs Bergs-
lags Aktiebolag**, by E. J.

Ljungberg, Falun. (See No. 46 k.)

Charcoal pig-iron.

- l) **Laxå Bruks Aktiebolag**,
Laxå Iron Works Co. Lim., by
C. C:son Lindberg, Laxå. (See
No. 46 l.)

Charcoal pig-iron.

- o) **Söderfors Bruks Aktiebo-
lag**, *Söderfors Iron Works Co.
Lim.*, by P. G. Tamm, Söder-
fors, Sweden. (See No. 46 o.)

Pig-iron for the Walloon, Martin and Lancashire process as well as for export.

50. **Aktiebolaget Österby
Bruk**, *Österby Iron and Steel
Works Co. Lim.*, by A. Lind-
man, Dannemora, Sweden. (See
No. 48.)

Pig-iron, manufactured exclusively from Dannemora ore, fuel charcoal; the slag belonging to it.

CLASS 326.

51. **Sebenius, J. L.**, Engineer,
Nykroppa, Sweden.

Models, scale $\frac{1}{10}$, of apparatus for the removal of blow-holes in steel ingots and cast-steel by centrifugal force, while the steel is being transformed from fluid to solid form.

Products, manufactured by this process.

Prev. aw. Gold medal of the French Society of Inventors.

CLASS 331.

52. **Jernkontorets Kollektiv-
utställning**, *Collective Exhi-
bition of the Swedish Iron Ma-
sters*. (See No. 46.)

- a) **Aktiebolaget Ankarsrums
Bruk**, *Ankarsrum Iron Works*

Co. Lim., by A. de Maré, An-karsrum, Sweden. (See No. 46 a.)
Ingots, blooms and billets of Lancashire- and Martin-metal.

b) **Avesta Jernverks Aktiebolag**, *Avesta Steel Works Co. Lim.*, by H. A. Cornelius, Avesta. (See No. 46 b.)

Ingots and billets of Martin- and Bessemer-steel.

c) **Aktiebolaget Bofors-Gullspång**, *Bofors-Gullspång Co. Lim.*, by C. Danielsson, Bofors, Sweden. (See No. 46 c.)

Steel made by the Siemens-Martin process.

Cast-steel goods of different kinds.

d) **Degerfors Jernverk**, *Degerfors Iron & Steel Works*, Proprietors Strömsnäs Iron Works Co. Lim., Degerfors. (See No. 46 d.)

Steel ingots.

e) **Fagersta Bruks Aktiebolag**, *Fagersta Iron and Steel Works Co. Limited*, by Chr. Aspelin, Westanfors. (See No. 46 e.)

Siemens-Martin steel ingots.
Hollow ingots for tubes.

g) **Forsbacka Jernverks Aktiebolag**, *Forsbacka Iron Works Co. Lim.*, by Chr. Lundeberg, Forsbacka, Margrethill, Gefle. (See No. 46 g.)

Products of the Bessemer process, viz: Series of broken ingots for showing the fracture.

Rolled and forged billets.

Forged steel for tools.

h) **Horndals Jernverks Aktiebolag**, *Horndal Iron Works Co. Lim.*, by J. Michaeli, Stockholm. (See No. 46 h.)

Blooms made by the Lancashire refining process (charcoal fire).

Billets or reheated blooms for best wire and horse-nail rods.

k) **Stora Kopparbergs Bergslags Aktiebolag**, by E. J. Ljungberg, Falun. (See No. 46 k)
Bessemer ingots.
Siemens-Martin ingots.
Charcoal iron blooms.

o) **Söderfors Bruks Aktiebolag**, *Söderfors Iron Works Co. Lim.*, by P. G. Tamm, Söderfors, Sweden. (See No. 46 o.)

Broken steel ingots of different degrees of hardness.

Broken steel billets, rolled and forged.

Broken blooms.

Broken Walloon-iron for the manufacture of crucible steel.

53. **Uddeholms Aktiebolag**, *Uddeholm Co. Lim.*, by A. G. J. Svedelius and R. Geijer, Uddeholm.

Iron and steel in blooms, billets,

Bars and rods.

Cold-rolled steel-springs.

Horse-shoe nails.

Screws, wire-nails.

Borers.

Sledges.

Hammers.

Blacksmith's anvils, etc.

Brands:





Prev. aw. Moscow, Antwerp, London, Paris, New-York, Philadelphia, Melbourne, Sweden.

54. Aktiebolaget Österby Bruk, *Österby Iron and Steel Works Co. Lim.*, by A. Lindman, Dannemora, Sweden. (See No. 48.)

Cementation steel.
Crucible steel in ingots.

CLASS 334.

55. Jernkontorets Kollektivutställning, *Collective Exhibition of the Swedish Iron Masters.* (See No. 46.)

a) Aktiebolaget Ankarsrums Bruk, *Ankarsrum Iron Works Co. Lim.*, by A. de Maré, Ankarsrum, Sweden. (See No. 46 a.)
Samples of rolled Lancashire- and Martin-metal.

b) Avesta Jernverks Aktiebolag, *Avesta Steel Works Co. Lim.*, by H. A. Cornelius, Avesta. (See No. 46 b.)

Steel bars, round, square, flat and octagonal.

Fancy steel.

Quality tests of Martin- and Bessemer-steel as: knots, twisting tests, tests for bending by cold process, for tensile strength, for showing the fracture and of redshortness.

c) Aktiebolaget Bofors-Gullspång, *Bofors-Gullspång Co.*

Lim., by C. Danielsson; Bofors, Sweden. (See No. 46 c.)

Bar-iron.

Fine-iron and wire-iron, manufactured by the Lancashire process.

Drawn wire and wire-ropes.

d) Degerfors Jernverk, *Degerfors Iron & Steel Works*, Proprietors Strömsnäs Iron Works Co. Lim., Degerfors. (See No. 46 d.)

Steel bars, broken to show the fracture.

Samples of bar-iron and sheet-iron, bent.

Wire-coils.

e) Fagersta Bruks Aktiebolag, *Fagersta Iron and Steel Works Co. Limited*, by Chr. Aspelin, Westanfors. (See No. 46 e.)

Forged and rolled steel.

Wire, ditto for fencing.

f) Aktiebolaget Finspongs Styckebruk, *Finspong Gun Factory Co. Lim. Iron Works of Finspong and Grytjöl*, Skönnarbo. (See No. 46 f.)

Rolled iron and steel.

Wire.

g) Forsbacka Jernverks Aktiebolag, *Forsbacka Iron Works Co. Lim.*, by Chr. Lundeborg, Forsbacka, Margrethill, Gefle. (See No. 46 g.)

Series of tests for tensile strength and

Quality tests.

h) Horndals Jernverks Aktiebolag, *Horndal Iron Works Co. Lim.*, by J. Michaeli, Stockholm. (See No. 46 h.)

Bar-iron for crucible cast-steel with very low percentage of phosphorus, viz.

0,014-0,016 % and sulphur 0,005-0,007 %.

Horse-nail rods, flat, straight in bundles and in coils.

Wire-rods, for finest drawn and best quality wire, telegraph and telephone purposes, in heavy strings up to 120-130 lbs.

Rivet-rods, all sizes and in heavy strings for cold made rivets.

i) **Kilafors Jernverks Aktiebolag**, *Kilafors Iron Works Lim.*, by C. A. Rettig, Kilafors, Sweden. (See No. 46 i.)

Bar-iron.

j) **Kohlswa Bruk**, *Kohlswa Iron Works*, by Thore Lindberg, Kohlswa. (See No. 46 j.)

Wire and nail-rods made by the Lancashire process, of softest quality.

Nail-sheet made by the Martin process for the manufacturing of horse-shoe nails, cold.

k) **Stora Kopparbergs Bergslags Aktiebolag**, by E. J. Ljungberg, Falun. (See No. 46 k.)

Rolled iron and steel.

Hammered steel.

Hammered iron-bars.

l) **Laxå Bruks Aktiebolag**, *Laxå Iron Works Co. Lim.*, by C. C:son Lindberg, Laxå. (See No. 46 l.)

Bar-iron and fine iron, distinguished by superior uniformity and softness.

o) **Söderfors Bruks Aktiebolag**, *Söderfors Iron Works Co. Lim.*, by P. G. Tamm, Söderfors, Sweden. (See No. 46 o.)

Iron and steel bars of various sizes, rolled and forged.

56. **Uddeholms Aktiebolag**, *Uddeholm Co. Lim.*, by A. G.

J. Svedelius & R. Geijer, Uddeholm. (See No. 53.)

Iron and steel bars and rods.

57. **Aktiebolaget Österby Bruk**, *Österby Iron and Steel Works Co. Lim.*, by A. Lindman, Dannemora, Sweden. (See No. 48.)

Crucible steel in bars and wire.

*

GROUP 61. BORING AND DRILLING TOOLS AND MACHINERY, APPARATUS FOR BREAKING OUT ORE AND COAL.

CLASS 382.

58. **Uddeholms Aktiebolag**, *Uddeholm Co. Lim.*, by A. G. J. Svedelius & R. Geijer, Uddeholm. (See No. 53.)

Borers.

*

GROUP 67. HISTORY AND LITERATURE OF MINING AND METALLURGY.

CLASS 410.

59. **Sveriges Geologiska Undersökning**, *Geological Survey of Sweden*, Stockholm. (See No. 35.)

Models (on glass) of two Swedish mines (Gladhammar and Ljusnarsberg).

59 a. **Nordenström, G.**, *Professor*, Stockholm.

Normal maps (typical mine plans) for drawing plans and sections of metalliferous mines in Sweden. (Exhibited in common with the Geological Survey of Sweden.)

DEPARTMENT F.

MACHINERY.

GROUP 69. MOTORS AND APPARATUS FOR THE GENERATION AND TRANSMISSION OF POWER. HYDRAULIC AND PNEUMATIC APPARATUS.

CLASS 415.

60. Gustaf de Laval's Ångturbinfabrik, *Steam Turbine Manufactory*, by Gustaf de Laval, Stockholm.

Turbine-dynamo machines.

Prev. aw. At the 4th Electrical Exhibition in St. Petersburg 1892.

CLASS 422¹.

61. Jernkontorets Kollektivutställning, *Collective Exhibition of the Swedish Iron Masters*. (See No. 46.)

d) Degerfors Jernverk, *Degerfors Iron & Steel Works*, Proprietors, Strömsnäs Iron Works

Co. Lim., Degerfors. (See No. 46 d.)

Rolled pipes.

*

GROUP 72. MACHINERY FOR THE MANUFACTURE OF TEXTILE FABRICS AND CLOTHING.

CLASS 437¹.

62. Husqvarna Vapenfabriks Aktiebolag, *Husqvarna Arms Manufacturing Co. Lim.*, Jönköping. (See No. 216.)
Worsted working machines.

*

GROUP 73. MACHINES FOR WORKING WOOD.

CLASS 449.

63. Ericsson, O. A., Engineer, Gothenburg.

»Soloped», lathe for amateurs and watchmakers.

*

Dept F exhibited in Machinery Hall except

¹ Swedish Pavilion.

GROUP 77. MISCELLANEOUS
HAND-TOOLS, MACHINES AND
APPARATUS USED IN VARIOUS
ARTS.

CLASS 489.

64. Bratt, Charles E., *Merchant*,
Stockholm, Sweden.

»Superior». (Patent.) Machine
for putting together staves to cylindrical
casks (patent) for dry and liquid goods.
Worked by hand- or by steampower.

Wasted wood may be used as material
for staves.

NB. Production about 200 casks pr hour.
Agent in Chicago: Carl Dellwik,
4160 Ellis Avenue.

*

GROUP 78. MACHINES FOR
WORKING STONE, CLAY AND
OTHER MATERIALS.

CLASS 491.

65. Hasselberg, Per, *Sculptor*,
Stockholm.

Pointing machine.

DEPARTMENT G.

TRANSPORTATION. RAILWAYS, VESSELS, VEHICLES.

GROUP 80. RAILWAYS, RAILWAY PLANT AND EQUIPMENT.

CLASS 500.

66. **Jernkontorets Kollektiv-
utställning**, *Collective Exhi-
bition of the Swedish Iron
Masters*. (See No. 46.)

j) **Kohlswa Bruk**, *Kohlswa Iron
Works*, by Thore Lindberg,
Kohlswa. (See No. 46 j.)

Locomotive wheel that has been
exposed to hydraulic pressure.

m) **Sandvikens Jernverks
Aktiebolag**, *Sandviken Iron
Works Co. Lim.*, by A. H. Gö-
ranson, Sandviken. (See No.
46 m.)

Wheel tires.

n) **Surahammars Bruks Ak-
tiebolag**, *Surahammar Iron
Works Co. Lim.*, by P. Peters-
son, Surahammar. (See No.
46 n.)

Two new axles of puddle-steel and
two of Siemens-Martin steel.

Railway-wheel, the centre of which
is forged solid of puddle-iron, the tire

of Bessemer-steel, fastened to the centre
with safety-rings.

Two pieces cut out of the tire for
showing the fastening of the tire to the
centre of the wheel.

o) **Söderfors Bruks Aktie-
bolag**, *Söderfors Iron Works
Co. Lim.*, by P. G. Tamm, Sö-
derfors, Sweden. (See No. 46 o.)
Springs for railway-cars and loco-
motives.

Buffer coil-springs.

Rail- and tramway-wheels,
system Wanner.

CLASS 503.

67. **Jernkontorets Kollektiv-
utställning**, *Collective Exhi-
bition of the Swedish Iron
Masters*. (See No. 46.)

n) **Surahammars Bruks Ak-
tiebolag**, *Surahammar Iron
Works Co. Lim.*, by P. Peters-
son, Surahammar, Sweden. (See
No. 46 n.)

Axle for railway waggon wheels,
manufactured of puddle-steel, bent cold
after having run 765,000 kilometers on
the Swedish State Railway.

*

GROUP 85. VESSELS, BOATS.
MARINE, LAKE AND RIVER
TRANSPORTATION.

CLASS 532.

68. Jernkontorets Kollektiv-
utställning, *Collective Exhi-
bition of the Swedish Iron
Masters.* (See No. 46.)

o) Söderfors Bruks Aktie-
bolag, *Söderfors Iron Works
Co. Lim.*, by P. G. Tamm, Sö-
derfors, Sweden. (See No. 46 o.)
Anchors.

CLASS 534.

69. Bergsunds Mekaniska
Verkstads Aktiebolag,

*Bergsund Mechanical Works
Co. Lim.*, Stockholm.

Sheet-iron frame for automatic
beacon.

70. Kgl. Lotsstyrelsen, *Royal
Pilotage and Light-house Board*,
Stockholm.

Beacon with automatic apparatus,
intended for archipelagos, ports, rivers,
etc. The lamp will burn without super-
vision about 10 days with undiminished
flame. The lamp is constructed by G.
W. Lyth. The rotator (constructed by
L. F. Lindberg) gives such a peculiar
character to the light of the beacon, that
it cannot be mistaken for any other kind
of light.

Prev. aw. London 1883.

DEPARTMENT H.

MANUFACTURES.

GROUP 87. CHEMICAL AND PHARMACEUTICAL PRODUCTS, DRUGGISTS' SUPPLIES.

CLASS 543.

71. Skånska Ättikfabriken,
Scanian Vinegar Manufactory,
by Wilhelm Wendt, Perstorp.
Pyroligneous acid, raw and recti-
fied.

Acetic acid, raw.

Ditto rectified, pure and for tech-
nical purposes.

Ditto indifferent to permanga-
nate of potash.

Acetic acid, crystallized.

Acetate of lime, grey and brown.

Acetate of soda, melted.

Ditto, crystallized for chemical use.

Creosote, according to »Pharmacopea
Germanica III».

Wood spirit, conforming to the Swe-
dish law for denaturalizing.

Methylic alcohol.

Ditto, free from acetone.

Pyrolignite of iron.

Charcoal.

Beech-wood tar; birch-wood tar; wood-
tar oil.

Prev. aw. Copenhagen 1888, Sweden
1891.

CLASS 544.

72. Kritbruksbolaget i Malmö,
The Chalk Quarries Company,
Malmö, by A. F. Hörstedt.

Samples of chalk, raw, just as
when extracted from A. F. Hörstedt's
chalk quarries at Qvarnby.

Elutriated and dried chalk.

Prev. aw. Moscow 1872.

CLASS 548.

73. Skånska Ättikfabriken,
Scanian Vinegar Manufactory,
by Wilhelm Wendt, Perstorp.
(See No. 71.)

Acetate of soda, melted.

Ditto, crystallized for chemical use.

Creosote, according to »Pharmacopea
Germanica III».

Wood spirit, conforming to the Swe-
dish law for denaturalizing.

Methylic alcohol.

Ditto, free from acetone.

Pyrolignite of iron.

CLASS 550.

74. Jönköpings Tändsticks-
fabriks Aktie-Bolag, *Jön-
köping Match Manufacturing Co.*
Lim., by B. Hay, Jönköping,
Sweden.

Packets of matches, and
Boxes filled with matches with-
out fulminate.

Loose matches and materials;
column with views of the manufactory;
copies of medals awarded to the manu-
factory.

Prev. aw. Paris 1855, 1867, 1878,
London 1862, Amsterdam 1869, 1883,

Copenhagen 1872, 1888, Moscow 1872, Vienna 1873, Philadelphia 1876, Madrid 1883, Antwerp 1885, Sweden 1865, 1866, 1881.

75. Södertelje Tändsticksfabrik, Södertelje Match Manufactory. Proprietor: Eric Holmberg, Södertelje.

Swedish matches.

Prev. aw. Moscow 1872, Paris 1878, Boston 1883, Naples 1891, Sweden 1890, 1891.

76. Tändsticksfabriks-Aktiebolaget Vulcan, Vulcan Match Manufacturing Co. Lim., Gothenburg and Tidaholm, Sweden.

Safety matches.

Paraffin matches.

Flaming Lights.

»Tändstickors».

Prev. aw. Moscow 1872, Vienna 1873, Sweden 1871, 1891.

*

GROUP 88. PAINTS, COLORS, DYES AND VARNISHES.

CLASS 552.

77. Aktiebolaget Barnängens

Tekniska Fabrik, Barnängen Technical Manufacturing Co.

Lim., Purveyor to H. R. M. the King of Sweden, Stockholm.

Writing and copying ink.

Prev. aw. Moscow 1872, 1882, Copenhagen 1872, 1888, London 1873, Vienna 1873, Paris 1878, Melbourne 1889.

78. Tekniska Aktiebolaget

Flora i Gefle, The Flora Technical Co. Lim., Gefle, Sweden.

Several kinds of writing-ink.

This ink is quite indelible, the copying ink is the best one possible for

correspondence and book-keeping, as the document ink is for bonds, business letters, legal documents, wills etc.

*

GROUP 89. TYPEWRITERS, PAPER, BLANK BOOKS, STATIONERY.

CLASS 556.

79. J. H. Munktells Pappersfabriks Aktiebolag, J. H. Munktell Paper Mills Co. Lim., Grycksbo.

Agent in Chicago: E. H. Sargent & Co., 125 State Street, Chicago.

Filter-paper in reams.

Cut filter-paper enclosed in birch-bark boxes.

Samples and pulp enclosed in a large glass tube.

Prev. aw. Paris 1878, Denmark and Sweden.

CLASS 557.

80. Munksjö Aktiebolag, Munksjö Paper Mills Co. Lim., Jönköping, Sweden.

Samples of building-boards and paper.

Several kinds of wrapping paper.

Prev. aw. Paris 1867, 1878, Moscow 1872, Copenhagen 1872, 1888, Vienna 1873, Madrid 1883, Sweden 1862, 1865, 1866, 1868, 1871, 1878, 1880, 1881, 1891.

CLASS 558.

81. Gustafsfors Fabrikers Aktiebolag, Gustafsfors Manufacturing Co. Lim., Gustafsfors. (See No. 25.)

Wrapping paper.

82. Munksjö Aktiebolag, Munksjö Paper Mills Co. Lim., Jönköping, Sweden. (See No. 80.)

Several kinds of wrapping paper.

CLASS 559.

83. Holmens Bruks & Fabriks Aktiebolag, *Holmen Paper Mills & Manufacturing Co. Lim.*, Norrköping.

Printing paper, ditto for labels for match-boxes.

CLASS 561.

84. Andersson, N. B., *Bookbinder*, Stockholm. (See No. 121.)

Collection of book-covers.

85. Beck, F. & Son, *Bookbinding, Album and Portfolio Manufactory*, Stockholm.

Objects of leather-intarsia.

The exhibits are hand-made by the following process: several skins of various colors are piled one upon the other and cut right through. Then the separate colors are combined on one piece of leather in a way to produce a surface just as even, as if the cover were made out of a single piece of leather.

86. Hedberg, Gustaf, *Bookbinder*, Stockholm. (See No. 121.)

Morocco book-covers and covers for addresses of thanks etc. with leather intarsia and gilded by hand, in ancient and modern French designs. Prev. aw. Copenhagen 1888.

87. P. Herzogs Bokbinderi- och Bokförlags-Aktiebolag, *Herzog, P., Bookbinding and Publisher's Co. Lim.*, Stockholm. (See No. 121.)

Bound hymn-books.

88. Lindmansson, J. A. W., *Bookbinder*, Stockholm. (See No. 121.)

Collection of book-covers.

89. Nilsson, Vitalis, *Bookbinder*, Stockholm. (See No. 121.)

Specimens of bookbinding.

CLASS 564.

90. Gillberg, Otto, *Portfolio-maker*, Stockholm. (See No. 121.)

Implements for the writing-table.

91. Tengwall, Andr., Helsingborg.

The Tengwall Letter-file (patented) in various sizes with index, cut-out, reference-file and transferring hooks.

The most handy in the world.

Prev. aw. Sweden 1890.

*

GROUP. 90. FURNITURE OF INTERIORS, UPHOLSTERY AND ARTISTIC DECORATION.

CLASS 566.

92. Almgren, J. R., *Cabinet-maker*, Stockholm. (See No. 121.)

Secretaire.

Fire-side settle.

Business started in 1862.

93. Beckman, Axel, *Cabinet-maker*, Norrköping. (See No. 121.)

Suite of furniture of gilded wood with bronze mountings: bedstead, table, easy chairs, tabourets and wardrobe.

Suite of mahogany furniture with gilt bronze mountings: washstand, table and secretaire.

94. Berglund, Anna, Miss, Stockholm. (See No. 121.)

Decoration for table-top.

95. Widén, C. O. F., *Cabinet-maker*, Stockholm. (See No. 121.)

Walnut writing-table.
Altar-tabernacle.

CLASS 567.

96. Bodafors Stol- & Möbelfabrik, *Bodafors Chair & Furniture Manufactory*, Sandsjö, Sweden.

Special collection: Suite for dining-room or library: sofa, easy chair and chair of oak, carved in antique style.

Gilded suite for boudoir or parlor: sofa, easy-chair, chair and table of the Manufactory's own models.

For boudoir, hall, parlor, verandah etc.

Occasional chairs and tables in imitation ebony, walnut and mahogany.

In different places of the building: chairs and sofas of typical Swedish, as well as original, models of the Manufactory.

Rockers of Swedish and American models.

Every thing made of different kinds of Swedish wood.

97. Eriksson, Bros., *Furniture-Store*, Arvika. (See No. 121.)

Wardrobe.

Writing table. The carving executed by the sculptor Christian Eriksson.

98. Johanson, C. A., *Cabinet-maker*, Wexiö, Sweden. (See No. 121.)

Chest of drawers of antique design, ornamented with intarsia work of different kinds of wood and gilt mountings.

99. Johansson, Carl O., *Cabinet-maker*, Stockholm. (See No. 121.)

Side board.

Dining table with 6 oak chairs.

Chair of honor.

100. Svensk Konstslöjd-Utställning, *Exhibition of Swedish Art Industry*, by Miss S. Giöbel, Stockholm. (See No. 204.)

Furniture, style of the 16th century, as chairs covered with gobelin and gilt leather, table with intarsia work.

101. Löfgren, A. W., *Furniture-Store*, Örebro, Sweden. (See No. 121.)

Walnut cabinet, carved by the exhibitor in renaissance style.

102. Löfmark, L. O., *Cabinet-maker*, Stockholm. (See No. 121.)

Ebony cabinet.

Clock-case of marquetry work.

Picture frame.

10 panels.

103. Mattsson, A., *Antiquary*, Stockholm. (See No. 121.)

3 easy chairs.

2 tabourets.

Table.

2 candelabra.

Box of marquetry work.

104. Schöldström, Otto, *Cabinet-maker*, Stockholm. (See No. 121.)

Small table.

Writing chair.

Easy chair.

4 small chairs.

Prev. aw. Copenhagen 1888.

105. Svensson, C. P., *Furniture-Store*, Stockholm. (See No. 121.)

2 book-cases.

Sofa.

Walnut clock-case.

CLASS 568.

106. **Brunsson, Johanna**, Miss, Stockholm. (See also Wom. B.)

Portière and table-cover.

Damask linen table-cloth.

Prev. aw. Sweden 1891, besides 7 other awards.

107. **Gahne, Hedda**, Mrs., Stockholm.

Curtains, technics »rödlakan».

108. **Göransson, Ellen**, Miss, Ystad.

Scanian textile fabric.

Prev. aw. Sweden 1891.

109. **Svensk Konstslöjd-Utställning**, *Exhibition of Swedish Art Industry*, by Miss S. Giöbel, Stockholm. (See No. 204.)

Textures, as: portières etc.

110. **Kulle, Thora**, Mrs., Lund. (See also Wom. B.)

Portière, technics »rödlakan», Scanian pattern.

Portière, technics »rödlakan», »dukagång», »krabbasnår», and »munkabälte», Scanian design.

Wall-hanging, technics »trensaflossa», roman design.

Screen, technics »Finnish rödlakan», roman design.

Table-cover, technics »dukagång», roman design.

Table-cover, technics »dukagång» and »krabbasnår», Scanian design.

Centre table-cloth, technics »delad dukagång», roman design.

Centre table-cloth, technics »delad dukagång», renaissance design.

Antimacassar, technics »delad dukagång», Scanian design.

Cotton aprons.

Striped cotton stuff.

Striped woollen stuff, woollen stuff called »dal»-striping, woollen aprons.

Prev. aw. Copenhagen 1888, Sweden 1887, 1891, besides 4 other medals in Sweden.

111. **Olsson, Cilluf**, Mrs., Kjöfvinge. (See also Wom. B.)

Portière and ottoman cover of Scanian texture.

Linen floor-cloths.

Blankets.

Woollen carpet. Scanian texture and design.

Prev. aw. Copenhagen 1888, Sweden 1889, 1891, besides 6 other awards.

112. **Wickbom, Ch.**, Mrs., Frinaryd.

Cotton curtains.

Cover for small chair.

»Flossa»-cover, for back of chair.

113. **Åhrberg, Ebba**, Mrs., Upsala. (See also Wom. B.)

Curtains.

CLASS 569.

114. **Andersson, Aug.**, *Gilder*, Stockholm. (See No. 121.)

Mirror of cut glass, the frame carved and gilded.

Picture frame.

Prev. aw. Copenhagen 1888.

CLASS 570.

115. **Scholander, Sv.**, *Ornament Sculptor*, Stockholm. (See No. 117.)

Mantel-piece of plaster.

CLASS 571.

116. **Berg, Edv.**, *Painter*, Stockholm. (See No. 121.)

Painted ceiling.

117. **Scholander, Sv.**, *Ornament Sculptor*, Stockholm. (See No. 121.)

Stucco-ceiling.

Mantel-piece of plaster.

118. **Schönow, C. L. & Co.,**
Gilder and Glazier, Stock-
holm. (See No. 121.)

Moulding and gilding of a door
and panel.

119. **Aktiebolaget J. O. Weng-
ströms Mekaniska Snick-
erifabrik,** *Mechanical Joi-
nery Manufacturing Co. Lim.,*
by J. O. Wengström, Stock-
holm. (See No. 121.)

Parquet floor.

Panel.

Prev. aw. Copenhagen 1872, Vienna
1873, London 1873, Philadelphia 1876,
Paris 1878.

120. **Åtvidabergs Snickeri-
fabrik,** *Åtvidaberg, Joinery
Manufactory.* Baron Theodor
Adelsvärd, Åtvidaberg. (See
No. 121.)

Oak panel.

2 oak parquet floors.

CLASS 572.

121. **Svenska Slöjdföreningen,**
Swedish Industrial Art Society,
Stockholm.

The Society was founded in 1845
for the purpose of improving Swedish
industrial art and trades, especially do-
mestic industry. In 1846 the Society
procured the foundation of the Technical
School of Stockholm, the principal one
of Sweden, still existing, and increasing
yearly the number of its pupils (for
the exhibits of this School see No. 367).

A Museum of Industrial Art, compri-
sing ancient national textile fabrics, em-
broideries and lace-work, plaster casts
and models of the most prominent foreign
products of industrial art, ancient as well
as modern, designs and drawings etc.
has been organized by the Society for
the purpose of public instruction (in 1885
this collection was deposited in the Na-

tional Museum at Stockholm) and several
expositions have been arranged both in
Stockholm and the provinces; at present
the provincial expositions are restricted
to the exhibition of assistant machinery
and hand-tools for the minor trades.

Competitions have been arranged two
or three times a year, for the training of
able draughtsmen and the encouragement
of artists and artizans, and ever since
the foundation of the Society, yearly sti-
pends have been given to clever artizans
for pursuing their studies abroad and as
premiums for useful technical improve-
ments. An Album of models for indus-
trial art is issued and distributed to
members. Public lectures on scientific
and artistic subjects have been held at
the cost of the Society.

Ever since 1865 the Society has been
co-operating with the Agricultural Socie-
ties, for the improvement and develop-
ment of domestic industry throughout
the country. For this purpose teachers
have been sent to the provinces, work-
shops superintended by able artizans have
been opened in the provinces for the
instruction of the rural population, a sec-
tion for domestic industry has been added
to the common schools, treatises on tech-
nical and economic subjects have been
issued, new or improved implements for
various kinds of domestic industry have
been ordered from abroad.

In many cases the participation of
Sweden in foreign expositions has been
caused by the impulse and active co-ope-
ration of the Society.

Though principally dependent on the
yearly subscriptions of its members, the
Society at present enjoys a Government
grant.

A suite of 4 rooms arranged by
the Swedish Industrial Art Society, and
representing the different styles employed
in furniture, and the development of art
industry in Sweden.

Prev. aw. Amsterdam 1877, Copen-
hagen 1888.

*

GROUP 91. CERAMICS
AND MOSAICS.

For Clays and other Materials.
(See Group 46.)

CLASS 574.

122. Höganäs Stenkolsbolag,
Hoeganaes Coal Mining Co.
The Sound, Sweden.

Fire bricks of superior quality, hardburnt, in all shapes and forms required for technical purposes.

Front and facing bricks.

Tiles and ornaments for mural decorations, yellow, brown-glazed and grey-burnt.

Fire clay, ground and burnt.

Unglazed vases, pedestals, garden decorations, etc. in various sizes, yellow, terracotta and grey.

Glazed earthenware pipes and tubes for sanitary purposes, all forms and sizes up to 24", bends and junctions, gullies and cess-pools, also troughs for farm-yards.

Saltglazed pottery, for household use and chemical-technical purposes, various models and sizes.

Fancy-wares, enamelled, brindled in modern and antique patterns.

Prev. aw. Paris 1867, 1878, Copenhagen 1872, 1888, Philadelphia 1876, Sweden 14 medals.

123. Köhler, I. G., *Börninge Brick Works.*

Red front bricks and ornamental tiles for facing, etc.

Prev. aw. Copenhagen 1888, Sweden 1891, Gothenburg 1891; classed beyond competition and consigned to the Test Works on account of the working system, where the products obtained superior certificates.

124. Minnesbergs Tegelbruks
Aktiebolag, *Minnesberg Brick Works Co. Lim.*

Front bricks and terra cotta ware.

125. Skromberga Stenkols- & Ler-Industri-Aktiebolag,
Skromberga Coal & Clay Manufacturing Co. Lim., Ekeby.

Facing bricks in every color.

Ornaments.

Yellow and brown tiles and bricks for pavements.

Salt-glazed sanitary and other pipes etc.

Steam-chimneys.

126. Wallåkra Stenkols-Aktiebolag, *Wallåkra Coal Mining Co. Lim.*, Mine of Billesholm.

Fire bricks of a kind free from saltpetre.

CLASS 575.

127. Höganäs Stenkolsbolag,
Hoeganaes Coal Mining Co.,
The Sound, Sweden. (See No. 122.)

Saltglazed pottery, for household use and chemical-technical purposes, in various models and sizes.

CLASS 576.

128. Höganäs Stenkolsbolag,
Hoeganaes Coal Mining Co.,
The Sound, Sweden. (See No. 122.)

Fancy wares, enamelled, brindled in modern and antique patterns.

129. Rörstrands Aktiebolag,
Rörstrand Co. Lim., Stockholm. (See also No. 121.)

Manufactures: porcelain, china, earthenware and stoneware. Exhibits:

Fountain and decorative stoves in earthenware.

Table-services.

Tea & coffee-sets.

Toilet ware.

Vases.

Pedestals etc. in porcelain, china and earthenware.

Porcelain- and stoneware insulators.
Feldspar (kalium-feldspar and sodium-feldspar).

Quartz.

Prew. aw. Paris 1867, 1878, Moscow 1872, Copenhagen 1872, 1888, Vienna 1873, London 1874, Bogota 1874, Philadelphia 1876, Berlin 1881, Madrid 1883, Sweden 1857, 1865, 1866, 1880, 1881, 1891.

CLASS 577.

130. Rörstrands Aktiebolag,
Rörstrand Co. Lim., Stockholm. (See No. 129.)

Table services.

Tea- and coffee-sets.

Toilet ware.

Vases, Pedestals etc. in porcelain and china.

CLASS 578.

131. Skromberga Stenkols- & Ler-Industri-Aktiebolag,
Skromberga Coal & Clay Manufacturing Co. Lim., Ekeby. (See No. 125.)

Yellow and brown tiles and bricks for pavements.

*

GROUP 92. MARBLE, STONE AND METAL MONUMENTS, MAUSOLEUMS, MANTELS, CASKETS, COFFINS AND UNDERTAKERS' FURNISHING GOODS.

CLASS 582.

132. Grafversfors Stenhuggeri och Sliperi, *Grafversfors Stone Works*. (See No. 39.)

Red (Swedish rose) square granite monument of American model.

Urn with pedestal of blue-black granite.

Columns of various kinds of granite.

Pedestal of pale red granite.
 Ornamental urn of red granite.

133. J. A. Melkerssons Porfyryverk, *Melkersson, J. A., Porphyry Works*, Orsa. (See No. 121.)

Porphyry vase.

CLASS 583.

134. Gössäters Stenhuggeri-Aktiebolag, *Gössäter Stone Works Co. Lim.*, Gössäter. (See No. 121.)

Mantel of polished marble.

*

GROUP 93. ART METAL WORK. ENAMELS, ETC.

CLASS 585.

135. Beskow, Bernhard, *Steel-etcher*, Gothenburg.

Etched decorations on buckler of chased steel-plate.

Border ornaments in Old Scandinavian style, gilt and deep-etched; 20 scenes from Frithiof's Saga. In the centre barrow with runic stone; a vikingship in full sail.

Prew. aw. Copenhagen 1888, Sweden 1880, 1881, 1883, 1886, 1891.

136. Carlstein, P. A., *Brasier*, Söderköping. (See No. 149.)

Bracket-lamp of chased brass. Bronze mountings for mantel.

137. Husqvarna Vapenfabriks Aktiebolag, *Husqvarna Arms Manufacturing Co. Lim.*, Jönköping. (See No. 216.)

Decorative arms.

138. Norrström, C. Hj., *Artist*, Stockholm.

»Ceres»-vase of steel, etched, gilt and enchased; parts of it made of

gilt bronze, the raised figures of silver-plated oxidized bronze. The myth of the goddess Ceres is represented on this vase, the frieze of one side showing her teaching agriculture to mankind, the other side, a harvest festival in her honor. The top is crowned by Ceres, holding a basket filled with fruits. Height about 130 ctm.

Two smaller vases of chased and etched steel, gilt and oxidized, one of them ornamented with bacchanalian procession, the other representing the hunt of Diana. These vases may be considered as unique, each being made out of one piece of superior Bessemer-steel.

Cabinets of yacca-wood with gilt and silver-plated steel etchings, decorative designs: 'Spring' and 'Summer'. Height 170 ctm.

Bucklers, with halberds of steel, chased, etched and gilt.

Buckler of steel copied from the buckler of Gustavus Adolphus, now to be found in the State's Collections.

Fans made of steel.

Jewel-case of etched and gilt steel.

139. Wiklund, W., Stockholm,
(See No. 121.)

Two bracket-lamps, chased and forged.

*

GROUP 94. GLASS AND
GLASSWARE.

CLASS 592.

140. Reijmyre Bruks Aktiebolag, *Reijmyre Glassworks Co. Lim.*, by Josua H. Kjellgren, Reijmyre. (See also No. 121.)

Glassware for the table, crystal, cut, plain, engraved, etched and gilded.

Glassware for chemist's use.

Fancy glassware.

Exhibition cups for Art Museums.

Prev. aw. Paris 1855, Moscow 1872, Copenhagen 1872, 1888, Bogota 1874, Philadelphia 1876, Sweden 1865, 1866, besides 8 more medals.

CLASS 593.

141. Reijmyre Bruks Aktiebolag, *Reijmyre Glassworks Co. Lim.*, by Josua H. Kjellgren, Reijmyre. (See No. 140.)
Fancy glassware.

*

GROUP 96. CARVINGS IN
VARIOUS MATERIALS.

CLASS 598.

142. Dikman, August, Falun.
(See No. 121.)

Album with covers of different kinds of wood, carved in national style and ornamented with the arms of Dalecarlia.

143. Svensk Konstslöjd-Utställning, *Exhibition of Swedish Art Industry*, by Miss S. Göbel, Stockholm. (See No. 204.)

Carved objects, as: boxes, portfolios, photo frames, paper cutters, tankards, beer-cask on support, etc.

144. Monthan, Maria, Miss, Stockholm.

Carved chair, in ancient Northern style.

145. Netzel, Sigrid, Miss, Stockholm.

Carved box.

146. Aktiebolaget Universal-svarfveriet, *Universal Turnery Co. Lim.*, Stockholm.

Wooden handles for umbrellas and parasols, turned in round and oval shapes, ornamented by carving, pyrotypy or painting.

147. Åman, Emy, Mrs., Linköping.

Hanging wall cabinet of carved oak.

CLASS 602.

148. Reijmyre Bruks Aktiebolag, *Reijmyre Glassworks Co. Lim.*, by Josua H. Kjellgren, Reijmyre. (See No. 140.)
Exhibition cups for Art Museums.

*

GROUP 97. GOLD AND SILVER
WARE, PLATE, ETC.

CLASS 604.

149. Carlstein, P. A., *Brasier*, Söderköping. (See No. 121.)

Toilet-service of chased silver: mirror, basin and ewer, candlesticks etc.
Bracket-lamp of chased brass.
Bronze mountings for mantel.

150. Eriksson, Christian, *Sculptor*, Paris. (See No. 121.)

Silver cup.

Silver cane-head.

151. Hallberg, C. G. (Jean Jahnsson), *Jeweller*, Stockholm. (See also No. 121.)

Silver-gilt set of church-plate in gothic style, set with colored stones.

Presentation cup, exact copy of the one given to Gustavus Adolphus in 1631 by the Protestant citizens of Nuremberg. The cup consists of Atlas carrying the globe marked with a map of the 16th century. Professor A. E. Nordenkiöld superintended the execution of the latter part of the design.

Complete toilet-service of silver-gilt in »Gustavian» style (Louis XVI):

basin, ewer, toilet-boxes etc. copied from a toilet-set formerly belonging to Queen Sophia Magdalena, and now to be found in the State's Collections.

Collection of drinking-cups of Swedish models.

Collection of spoons copied from originals of the 13th, 14th and 15th centuries, belonging to the State's Historical Museum.

Collection of silver-gilt jewelry in Swedish national style.

Prev. aw. Barcelona 1888, Paris 1889, Sweden 1891.

152. Möllenberg, Gustaf, *Jeweller*, Proprietors A. R. Lindgren & C. T. Feron, Stockholm. (See No. 121.)

Church-plate: wine-urnets, communion-cup, paten, font-basin of silver-gilt, set with precious stones and Swedish pearls.

Statue of Gustavus I Wasa, King of Sweden, modelled by Professor Börjesson.

Image of Christ, not chased, and cast in one piece.

Viking-ship with sails, belonging to Prince Bernadotte.

Drinking-cup, set with medals of the Folkung race of kings.

Coffee-service: coffee-pot, cream-bowl, sugar-box.

Business started in 1827.

Prev. aw. London 1851, 1862, Paris 1855, 1878, Sweden 1851, 1865.

153. Svensson, Emma, Miss, Stockholm. (See No. 121.)

Plate of chased silver.

CLASS 605.

154. Guldsmedsaktiebolaget, *Goldsmith's Co. Lim.*, Stockholm. (See No. 121.)

Coffee-service of chased silver (baroque style) comprising: salver, panier, coffee-pot, cream-bowl, sugar-box, two

coffee-cups with saucers and spoons, a pair of sugar-tongs.

Designed by Aug. Lindegren, architect; the objects made by D. Olsson, silversmith; and the chasing by Frans Malmberg, modeller and chaser of the Goldsmith's Co. Lim.

Prev. aw. Copenhagen 1872, Bogota 1874, Paris 1878, Sweden 1866.

155. **Möllenborg, Gustaf**, *Jeweller, Proprietors A. R. Lindgren & C. T. Féron*, Stockholm. (See No. 152.)

Coffee-service: coffee-pot, cream-bowl, sugar-box.

CLASS 607.

156. **Eriksson, Christian**, *Sculptor*, Paris. (See No. 150.)

Silver cane-head.

157. **Green, C. E.**, *Jeweller*, Nörregård, Markaryd.

Spoons of antique models, originals and copies; engraved and chased objects.

Prev. aw. Vienna 1873, Paris 1878, Boston 1883, Copenhagen 1888, Sweden 1866.

158. **Hallberg, C. G. (Jean Jahnsson)**, *Jeweller*, Stockholm. (See No. 151.)

Collection of spoons, copied from originals of the 13th, 14th and 15th centuries, belonging to the State's Historical Museum.

CLASS 608.

159. **Santesson, Fr. Abr.**, *Pewter and Britannia-metal Manufactory*, Stockholm. (See also No. 121.)

Objects of pewter and britania-metal, as: candlesticks, drinking-cups, goblets.

Toys.

*

GROUP 98. JEWELRY AND ORNAMENTS.

CLASS 616.

160. **Carlman, C. F.**, *Jeweller*, Stockholm. (See No. 440.)

Collection of stars of Royal Swedish Orders of Knighthood.

161. **Hallberg, C. G. (Jean Jahnsson)**, *Jeweller*, Stockholm. (See No. 151.)

Collection of silver-gilt jewelry in Swedish national style.

*

GROUP 99. HOROLOGY.

WATCHES, CLOCKS, ETC.

CLASS 617.

162. **Halda Fickurfabriks Aktiebolag**, *Halda Watch Manufacturing Co. Lim.*, Svängsta. **Watches.**

Telur, instrument for measuring time during telephone conversation, for control in business etc.

Telecron, apparatus belonging to the telephone; will signalize to applicants, the owner being absent, the time he may be found.

Parts of watches in early and finished state.

Business established in 1887, owns 16 patents.

Prev. aw. Sweden 5 medals.

CLASS 618.

163. **Halda Fickurfabriks Aktiebolag**, *Halda Watch Manufacturing Co. Lim.*, Svängsta. (See No. 162.)

Parts of watches in early and finished state.

CLASS 621.

164. **Linderoth, G. W.**, *Watch-*

maker to the King, Stockholm.
(See also No. 121.)

Clocks.

Pendulum clocks, carved, in gilt and in porcelain cases.

Prev. aw. London 1851, 1862, 1874, Paris 1855, 1878, Vienna 1873, Philadelphia 1876, Copenhagen 1876, 1888, Sweden 1851, 1865, 1866, 1868, 1871, 1876, 1891, Norway 1877.

*

**GROUP 100. SILK AND
SILK FABRICS.**

CLASS 629.

165. Almgren, K. A., *Silk-manufacturer*, Stockholm. (See No. 121.)

Upholstery silk.

Prev. aw. London 1851, 1862, Paris 1855, 1878, Vienna 1873, Bogota 1874, Philadelphia 1876, Sweden 1847, 1851, 1865, 1866.

166. John Lennings Väfskola, *John Lenning's Weaving School*, Norrköping, Sweden. (See No. 365 and also No. 121.)

Wall-covering of silk with design in gold.

CLASS 630.

167. Cervin-Ellqvist, Elna, Mrs., Stockholm.
Silk shawl made by hand-loom.

*

**GROUP 102. YARNS AND
WOVEN GOODS OF COTTON,
LINEN AND OTHER VEGETABLE
FIBRES.**

CLASS 638.

168. Askenström, Catharina, Miss, Glemminge, Svenstorp.

Texture, technics »dukagång», unbleached cloth in ancient Scanian design.
Scanian pillow-lace.

169. Kulle, Thora, Mrs., Lund.
(See No. 110.)

Cotton aprons.

Striped cotton stuff.

CLASS 639.

170. Brunsson, Johanna, Miss, Stockholm. (See No. 106.)

Damask linen table-cloth.

171. Engeström, Nina v., Miss, Upsala. (See No. 121.)

Table-cloth and 12 napkins.

Towels, aprons.

Carpet.

Prev. aw. Sweden 1874.

171 a. Hallborg, Lotten, Miss, Stockholm.

Hand-spun linen yarn.

172. Olsson, Christina, Miss, Walla.

Hand-spun linen yarn.

173. Olsson, Cilluf, Mrs., Kjöf-linge. (See No. 111.)

Linen floor-cloths.

174. Sparre, Caroline, Countess, Westervik.

Hand-spun linen yarn.

175. Sparre, Sophie, Countess, Westervik.

Hand-spun linen yarn.

*

**GROUP 103. WOVEN AND
FELTED GOODS OF WOOL
AND MIXTURES OF WOOL.**

CLASS 641.

176. Kulle, Thora, Mrs., Lund.
(See No. 110.)

Striped woollen stuff.

Ditto, called »dal»-striping.

Woollen aprons.

CLASS 642.

177. Olsson, Cilluf, Mrs., Kjöf-
linge. (See No. 111.)
Blankets.

CLASS 647.

178. Svensson, Beda, Mrs.,
Stockholm.
Braiding.

CLASS 649.

179. Bengtsson, Karna, Mrs.,
Bjersjö, Ystad. (See No. 121.)
Four carpets, technics »rödlakan».
Prev. aw. Copenhagen 1888, Sweden
1878, 1881, 1885, 1889, 1890, 1891.

180. Engeström, Nina v., Miss,
Upsala. (See No. 171.)
Carpet.

181. Olsson, Cilluf, Mrs., Kjöf-
linge. (See No. 111.)
Woollen carpet, Scanian texture
and design.

182. Persson, Eleonora, Miss,
Brunflo.
Hanging, technics »fossa», copied
from Jemtland original of 1750.

- 182 a. Pålsson, Anna, Miss,
Kjöflinge.
Hearth cushion; design in red
woollen yarn.

*

GROUP 104. CLOTHING AND
COSTUMES.

CLASS 658.

183. Jonsson, Hilma, Mrs., Stock-
holm.
2 rational-dress under-bodies
of silk.

CLASS 659.

184. Husqvarna Vapenfabriks
Aktiebolag, *Husqvarna Arms
Manufacturing Co. Lim.*, Jön-
köping. (See No. 216.)
Sewing machines.

*

GROUP 105. FURS AND
FUR CLOTHING.

CLASS 661.

185. D. Forssell's Sons & Co.,
Furriers, Stockholm. (See also
No. 121.)

Carriage covers.

Fells.

Fur mats with stuffed animals, birds
and heads of animals.*Fur coats and cloaks, jackets, muffs,
caps, bonnets, gloves etc.*Most of the exhibits made from genuine
Swedish furs, valuable as well as cheap.
Prev. aw. London 1851, 1884, Paris
1862, 1867, 1869, 1878, Havre 1868,
Vienna 1873, Philadelphia 1876, Antwerp
1886, Sweden 1866, 1869, 1881.

CLASS 662.

186. D. Forssell's Sons & Co.,
Furriers, Stockholm. (See No.
184.)

Fur coats and Cloaks.

Jackets.

Muffs and Gloves.

Caps and Bonnets, etc.

*

GROUP 106. LACES,
EMBROIDERIES, TRIMMINGS,
ARTIFICIAL FLOWERS, FANS.

CLASS 664.

187. Askenström, Catharina,
Miss, Glemminge, Svenstorp.
(See No. 168.)
Scanian pillow-lace.

188. Karlström, Mathilda, Miss, Landskrona.
Two pocket-handkerchiefs with borders in imitation Irish lace.
189. Nordenfalk, Elisabeth, Baroness, Stockholm. (See No. 201.)
Imitation Venetian lace, hand-made.
190. Risling, Maria, Miss, Nässjö.
Pillow-lace border for pocket-handkerchief.
- CLASS 665.
191. André, Wilhelmina, Mrs., Stockholm.
Knitted coverlet for cradle.
192. Möller, Sara, Miss, Stockholm.
Two knitted shawls.
193. Nilsson, Emilie, Miss, Wermland. (See also Wom. B.)
Four linen towels with plaited fringes, technics called »shepherd girl's work».
194. Nordgren, Johanna, Mrs., Gefle.
Two knitted counterpanes.
195. Norrman, Hilda, Miss, Hamra, Province of Gefleborg.
A pair of sheets embroidered in hem-stitch.
196. Rosenberg, Elisabeth, Miss, Stockholm.
Embroidered chemise.
197. Rudolphi, Karin, Mrs., Delsbo.
Table-cover with embroidery in »Delsbo»-stitch.
198. Rönström, Hilda, Miss, Lund.
Embroideries, imit. of textiles.
199. Stange, Elisabeth, Miss, Stockholm.
Cloth, technics filet-guipure work.
- CLASS 666.
200. Hebbe, Hulda, Miss, Stockholm. (See No. 121.)
Artificial flowers.
- CLASS 667.
201. Nordenfalk, Elisabeth, Baroness, Stockholm.
Fans, exhibited in show-case.
Imitation Venetian lace, hand-made.
- CLASS 668.
202. Uhlin, Ebba, Mrs., Wadstena.
Hand-made thread-buttons.
- CLASS 669.
203. Handarbetets Vänner, *Friends of Handiwork*, Stockholm. (See also Wom. B. and No. 121.)
Association for the improvement of Swedish women's art-industry for artistic and patriotic purpose. School for sewing and weaving; permanent exhibition and sale of textile fabrics. The association is entirely managed by ladies, and all the designs employed are composed by women artists. Founded in 1874.
Exhibits: **Hanging and cushion for chair of honor**, composed by Miss Gisberg, roman design, technics applied embroidery.
Hearth-cushion, composed by Miss Petré, Swedish national design, technics feather stitch.
Carpet for chair of honor, copied from Swedish national textile, technics »rya»-texture.
Carpet for dining-table, composed by Mrs Winge, Swedish national design, technics »flossa»-texture.
Cover for settle. Scanian national texture.

Haute-lisse tapestry, viz: three large chairs and two tabourets, copied from haute-lisse tapestry of the 17th century belonging to the State; ordered by the Ethnographical Museum of the North in Stockholm.

Hangings, composed by Mrs Clason, née Petré, motive Norwegian haute-lisse tapestry, technics haute-lisse tapestry;

Chair, haute-lisse tapestry; these objects are ordered by the Industrial Association of Stockholm.

Prev. aw. Handarbetets vänner, Friends of Handiwork, have received awards at the following expositions: Philadelphia 1876, Amsterdam 1877, Christiania 1877, Paris 1878, Copenhagen 1879, 1888, Glasgow 1888, and many Swedish expositions.

204. *Svensk Konstslöjd-Utställning*, *Exhibition of Swedish Art Industry*, by Miss S. Giöbel, Stockholm. (See also Wom. B.)

Agent in Chicago: The Swedish Commissioner's Office.

Embroideries, as: Lapp-costume, wall hangings, table-covers, cushions, etc.

Furniture, style of the 16th century, as: chairs covered with gobelin and gilt leather, table with intarsia work.

Textures, as: portières, etc.

Carved objects, as: boxes, portfolios, photo frames, paper-cutters, tankards, beer-cask on support.

Prev. aw. Moscow 1872, Vienna 1873, London 1874, Finland 1875, Paris 1876, 1878, Norway 1877, Antwerp 1882, Sweden 1891 and several other expositions.

204 a. Nordenfalk, Elsa, Miss, Stockholm.

Cushion, silk embroidery.

Book cover, ditto.

205. Nordenfeldt, Maria, Miss, Gothenburg.

Folding screen, silk-embroidery.

Prev. aw. Sweden 1891.

206. Zickerman, Lilli, Miss, Sköfde. (See also Wom. B.)
Embroidered cushion and Centre table-cloth.
Prev. aw. Sweden 1891.

CLASS 670.

207. Handarbetets Vänner, *Friends of Handiwork*, Stockholm. (See No. 203.)

Carpet for chair of honor, copied from Swedish national textile, technics »rya»-texture.

Carpet for dining-table, composed by Mrs Winge, Swedish national design, technics »flossa»-texture.

Cover for settle, Scanian national texture.

Haute-lisse tapestry, viz: three large chairs and two tabourets, copied from haute-lisse tapestry of the 17th century belonging to the State; ordered by the Ethnographical Museum of the North in Stockholm.

Hangings, composed by Mrs Clason, née Petré, motive Norwegian haute-lisse tapestry, technics haute-lisse tapestry.

Chair, haute-lisse tapestry; these objects are ordered by the Industrial Association of Stockholm.

208. Rudbeck, Hildur, Miss, Upsala.

Hearth cushion of »flossa»-texture.

*

GROUP 110. TOYS AND FANCY ARTICLES.

CLASS 693.

209. Kræpelien, Emma, Miss, Stockholm.

Dolls in Dalecarlian costumes.

210. Santesson, Fr. Abr., *Pewter and Britannia-metal Manufactory*, Stockholm. (See No. 159.)

Toys.

211. Svederus, M., Miss, Stockholm.

Dolls in Dalecarlian costumes.

*

GROUP 111. LEATHER AND
MANUFACTURES OF LEATHER.

CLASS 705.

212. Lindberg, Lydia, Miss, Stockholm. (See also No. 121.)

Embossed leather covering for writing chair, and for six chairs for dining-room.

213. Nordqvist, Marianne, Miss, Stockholm. (See also Wom. B.)

Poetry-album of embossed leather.

214. Wrede, Hilda & Agathe, The Ladies, Wexiö.

Embossed and gilt leather covering for chair.

*

GROUP 113. MATERIAL OF
WAR; ORDNANCE AND
AMMUNITION. WEAPONS AND
APPARATUS FOR HUNTING,
TRAPPING, ETC. MILITARY
AND SPORTING SMALL-ARMS.

CLASS 714.

215. Jernkontorets Kollektiv-
utställning, *Collective Exhibi-
tion of the Swedish Iron Ma-
sters.* (See No. 46.)

e) Fagersta Bruks Aktiebolag,
Fagersta Iron Works Co. Lim.,
by Chr. Aspelin, Westanfors.
(See No. 46 e.)

Gun-barrels.

216. Husqvarna Vapenfabriks
Aktiebolag, *Husqvarna Arms*

*Manufacturing Co. Lim., Jön-
köping.*

Military small-arms.

Worsted working machines.

Decorative arms.

Sewing machines.

Hunting carbines.

Single and double-barrelled guns.

Prev. aw. Moscow 1872, Copenhagen
1872, 1888, London 1873, Vienna 1873,
Paris 1878, Barcelona 1888, Sweden and
Norway 23 medals.

CLASS 716.

217. Jernkontorets Kollektiv-
utställning, *Collective Exhibi-
tion of the Swedish Iron Ma-
sters.* (See No. 46.)

c) Aktiebolaget Bofors-Gull-
spång, *Bofors-Gullspång Co.
Lim.,* by C. Danielsson, Bofors,
Sweden. (See No. 46 c.)

Materials of war, as: ingots and
shot for cannons.

218. Aktiebolaget Finspongs
Styckebruk, *Finspong Gun
Factory Co. Lim. Iron Works
of Finspong and Grytjöl, Skön-
narbo.*

Mounted caponier cannon, 47
mm.

Steel and pig-iron shot, amongst
which a steel bullet 27 mm., that, being
tried, has completely penetrated a Motala
steel-plate of 27 mm., and

Steel shot 15 mm. which has
completely penetrated a Creusot steel-plate
of 25 mm.

CLASS 717.

219. Svalling, G. V., & Co.,
Mölnortorp. (See No. 23 and 440.)

Cut- and thrust-weapons.

Some of the fencing swords have been
used at the Royal Institute of Gymnastics
during several years and show the excep-
tional strength and solidity of these arms.

The articles are made of best Swedish steel; the so-called Turkish damasceened-blades are manufactured from three kinds of steel, hammered 200 or 300 times, by which process they are rendered enormously strong and proof against breaking.

CLASS 718.

- 220. Husqvarna Vapenfabriks Aktiebolag,** *Husqvarna Arms Manufacturing Co. Lim., Jönköping.* (See No. 216.)
Hunting carbines.
Single and double-barrelled guns.

*

GROUP 114. LIGHTING
APPARATUS AND
APPLIANCES.

CLASS 719.

- 221. Lindberg, L. F.,** *Engineer,* Stockholm.

Rotator, metal structure employed for the Swedish beacon.

The vertical shades or glasses belonging to it are made to rotate through the current of air arising from the lamp, and will periodically eclipse the light or change its color, and consequently in many cases will act as a substitute for expensive clock-work.

Prev. aw. London 1883.

- 222. Lyth, G. W.,** *Instrument-maker,* Stockholm.

Lamp for the Swedish beacon.

The lamp, which burns without supervision 10 days with undiminished flame, consumes petroleum (Russian), has a constant level and a burner invented and patented by the exhibitor.

CLASS 722.

- 223. Meyer, Otto & Co.,** Konst-, Zink- & Metall-

gjuteri, Artistic Zinc & Metal-foundry, Stockholm. (See No. 121.)

Candelabra of gilt bronze.
Bronze chandelier for electric light.

*

GROUP 115. HEATING AND
COOKING APPARATUS AND
APPLIANCES.

CLASS 728.

- 224. Wiman, E. A.,** *Engineer,* Stockholm.

Patent stove for gas and for petroleum.

The arrangements for removing the gas generated by combustion being of a peculiar kind, the latter is rendered independent of the draught, whether strong, weak, or turned in a reverse direction. The stoves will perfectly utilize the heat produced. Letters patent applied for in U. S. A.

CLASS 729.

- 225. Svensson, J. V.,** *Manufacturer,* Stockholm.

Oil cooking-range.

Heater for soldering-iron, with tinning-pot, patent invention of the exhibitor.

The apparatus consumes petroleum, vaporized by a system of tubes, and is fed by the pressure of pumped air. Advantages of the system: a very small quantity of oil is consumed ($\frac{1}{8}$ of a liter pr. hour), intense heat (1 liter of water will boil in 3 or 4 minutes), no risk of explosion or smoke.

- 226. Wiman, E. A.,** *Engineer,* Stockholm. (See No. 224.)

Patent petroleum stoves of similar construction to the gas stoves.

*

GROUP 117. WIRE GOODS
AND SCREENS, PERFORATED
SHEETS, LATTICE WORK,
FENCING, ETC.

CLASS 735.

227. Jernkontorets Kollektivutställning, *Collective Exhibition of the Swedish Iron Masters.* (See No. 46.)

f) Aktiebolaget Finspongs Styckebruk, *Finspong Gun Factory Co. Lim., Iron Works of Finspong and Grytjöl, Skönarbo.* (See No. 46 f.)

Wire-netting.

Wire cloth.

*

GROUP 118. WROUGHT-
IRON AND THIN METAL
EXHIBITS.

CLASS 746.

228. Jernkontorets Kollektivutställning, *Collective Exhibition of the Swedish Iron Masters.* (See No. 46.)

d) Degerfors Jernverk, *Degerfors Iron & Steel Works, Proprietors, Strömsnäs Iron Works Co. Lim., Degerfors.* (See No. 46 d.)

Small objects of sheet-iron.
Hammers and stone mason's tools.

e) Fagersta Bruks Aktiebolag, *Fagersta Iron Works Co. Lim., by Chr. Aspelin, Westanfors.* (See No. 46 e.)
Springs and sundry tools.

f) Aktiebolaget Finspongs Styckebruk, *Finspong Gun Factory Co. Lim., Iron Works*

of Finspong and Grytjöl, Skönarbo. (See No. 46 f.)

Horse-shoes.

Tools for working stone.

Implements for the lumber industry.

g) Forsbacka Jernverks Aktiebolag, *Forsbacka Iron Works Co. Lim., by Chr. Lundeberg, Forsbacka, Margrethill, Gefle.* (See No. 46 g.)

Sundry tools, showing different purposes for which the steel is used.

k) Stora Kopparbergs Bergslags Aktiebolag by E. J. Ljungberg, Falun. (See No. 46 k.)

Horse-shoe nails.

Tools.

n) Surahammars Aktiebolag, *Surahammar Iron Works Co. Lim., by P. Petersson, Surahammar, Sweden.* (See No. 46 n.)

Bowls of pressed steel-plates for milk-separators and butter-extractors.

o) Söderfors Bruks Aktiebolag, *Söderfors Iron Works Co. Lim., by P. G. Tamm, Söderfors, Sweden.* (See No. 46 o.)

Parts of steam engines and other machinery.

Cog-wheels. Tools.

229. Uddeholms Aktiebolag, *Uddeholm Co. Lim., by A. G. J. Svedelius & R. Geijer, Uddeholm.* (See No. 53.)

Cold-rolled steel-springs.

Horse-shoe nails.

230. Aktiebolaget Österby Bruk, *Österby Iron Works Co. Lim., by A. Lindman, Danne-mora.* (See No. 48.)

Blanks for milling-machine cutters and sundry tools.

*

GROUP 119. VAULTS, SAFES,
HARDWARE, EDGE TOOLS,
CUTLERY.

CLASS 747.

231. Jernkontorets Kollektiv-
utställning, *Collective Exhi-
bition of the Swedish Iron
Masters.* (See No. 46.)

f) Aktiebolaget Finspongs
Styckebruk, *Finspong Gun
Factory Co. Lim., Iron Works
of Finspong and Grytjöl, Skön-
narbo.* (See No. 46 f.)

Cut-nail.

Wire-nail.

Tacks, etc.

232. Näsman, E. A., Eskilstuna.
Locks and Door-handles.

233. Stenman, Aug., Eskilstuna.
Builder's hardware.

234. Sörensen, N. G., Stock-
holm.

Locks and Door-handles con-
structed by the exhibitor, acting only by
application of the law of gravitation,
unaided by springs.

235. Uddeholms Aktiebolag,
Uddeholm Co. Lim., by A. G.
J. Svedelius & R. Geijer, Udde-
holm. (See No. 53.)

Screws.

Wire-nails etc.

CLASS 748.

236. Jernkontorets Kollektiv-
utställning, *Collective Ex-
hibition of the Swedish Iron
Masters.* (See No. 46.)

f) Aktiebolaget Finspongs
Styckebruk, *Finspong Gun
Factory Co. Lim., Iron Works
of Finspong and Grytjöl. Skön-
narbo.* (See No. 46 f.)

Axes.

237. Hults Bruk, *Hult Factory,*
Åby, Sweden.

Collection of axes made of forged
Swedish bar-iron and superior Swedish
cast-steel.

The models adapted for European,
South-American and continental markets.

Prev. aw. Adelaide 1887, Melbourne
1888, Barcelona 1888, Copenhagen 1888,
Vienna 1890, Sweden 1886, 1889, 1891.

CLASS 749.

238. Liljequist, P., Eskilstuna
Sågblads- & Eggjernsfa-
brik, *Manufactory for Saw-
blades & Edge-tools,* Eskilstuna,
Sweden. (See No. 241.)

Steels for planing machines,
made of superior Swedish compound
steel, twice tempered and polished by
machine.

239. Stridsberg & Biörck,
Trollhättan. (See No. 243.)

Machine-knives, all sorts.

Machine plane irons.

CLASS 750.

240. Jernkontorets Kollektiv-
utställning, *Collective Exhi-
bition of the Swedish Iron
Masters.* (See No. 46.)

o) Söderfors Bruks Aktie-
bolag, *Söderfors Iron Works
Co. Lim.,* by P. G. Tamm,
Söderfors, Sweden. (See No.
46 o.)

Files.

241. Liljequist, P., Eskilstuna
Sågblads- & Eggjernsfa-
brik, *Manufactory for Saw-
blades & Edge-tools,* Eskilstuna,
Sweden.

Circular saw.

Blades for gate-saws, hand-
and ice-saws made of superior Swedish

chromic steel, tempered and polished by machine.

Steels for planing machines made of superior Swedish compound steel, twice tempered and machine polished.

Prev. aw. Sweden 6 medals.

242. Sandvikens Jernverks Aktiebolag, Sandviken Iron Works Co. Lim., by A. H. Göranson, Sandviken.

Heavy band-saws and band for such manufacture.

Prev. aw. London 1862, Moscow 1872, Philadelphia 1876, Sweden 1860, 1866, 1882.

243. Stridsberg & Biörck, Trollhättan.

Saws and files.

Machine-knives, all sorts.

Machine plane irons.

Tool steel, etc.

Prev. aw. Moscow 1872, Philadelphia 1876, Finland 1881, 1884, 1887, Copenhagen 1888, Sweden 1868, 1871, 1880, 1891.

244. Öberg, C. O. & Co., Eskilstuna.

Files and rasps.

CLASS 751.

245. Berg, E. A., Eskilstuna.

Razors.

Objects of steel, etched and gilt.

Prev. aw. Paris 1878, Boston 1883, Copenhagen 1888, Sweden 1866, 1883.

246. Dahlgren, Carl Walfrid, Eskilstuna.

Scissors.

Razors.

Case-knives.

Skates.

247. Engström, Joh., Eskilstuna, Sweden.

Sole agents for U. S. A., Messrs Dame Stoddard & Kendall, 374 Washington Street, Boston, Mass.

Razors.

Knives.

Universal dental forceps.

Every razor, even the cheapest, is made of the very best Swedish steel.

Business started in 1874.

Prev. aw. Philadelphia 1876, Paris 1878, 1889, Sweden 1878, 1881.

248. Eskilstuna Jernmanufaktur-Aktiebolag, Eskilstuna Cutlery Co. Limited, Eskilstuna, Sweden.

Table-cutlery.

Shears.

Prev. aw. Moscow 1872, Copenhagen 1872, 1888, Vienna 1873, Bogota 1874, Philadelphia 1876, Madrid 1883, Paris 1889, Sweden 1878, 1880, 1881, 1888.

249. Halling, A., Eskilstuna.

Daggers.

Mechanical knives.

Case-knives.

250. Hadar Hallströms Knif-fabriks Aktiebolag, Knife-Manufacturing Co. Lim., by Hadar Hallström, Eskilstuna.

Pocket-knives.

Case of Mathematical instruments.

251. Hedengran & Son, Eskilstuna.

Pen-knives.

Pocket-knives.

All the blades hand-made and of superior steel. The knives may be had etched, nickel-plated and gilt; crests, facsimile monograms, views, emblems etc. may be applied to them.

Business started in 1833.

Prev. aw. Paris 1878, Sweden 1866, 1878, 1881.

252. Heljestrand, C. V., Eskilstuna.

Razors.

253. Jonsson, A. J., Eskilstuna.

Pen-knives.

Pocket-knives.

The articles are distinguished by the great care bestowed on the manufacture of the blades in order to make them strong and sharp.

CLASS 752.

254. **Jernkontorets Kollektivutställning**, *Collective Exhibition of the Swedish Iron Masters*. (See No. 46.)

e) **Fagersta Bruks Aktiebolag**, *Fagersta Iron Works Co. Lim.*, by Chr. Aspelin, Westanfors. (See No. 46 e.)

Sledges.

o) **Söderfors Bruks Aktiebolag**, *Söderfors Iron Works Co. Lim.*, by P. G. Tamm, Söderfors, Sweden. (See No. 46 o.)

Anvils.

255. **Lindström, E. F.**, Eskilstuna.

Tongs, fine and coarse, for industrial requirements.

Prev. aw. Philadelphia 1876, Sweden 1866, 1878.

256. **Uddeholms Aktiebolag**, *Uddeholm Co. Lim.*, by A. G. J. Svedelius & R. Geijer, Uddeholm. (See No. 53.)

Sledges.

Hammers.

Locksmith's anvils, etc.

*

GROUP 120. PLUMBING AND
SANITARY MATERIALS.

CLASS 754.

257. **Höganäs Stenkolsbolag**, *Hoeganaes Coal Mining Co.*, The Sound, Sweden. (See No. 122.)

Glazed earthenware pipes and tubes for sanitary purposes, all forms and sizes, up to 24", bends and junctions, gullies and cess-pools, also troughs for farmyards.

258. **Skromberga Stenkols- & Ler-Industri-Aktiebolag**, *Skromberga Coal & Clay Manufacturing Co. Lim.*, Ekeby. (See No. 125.)

Saltglazed sanitary and other pipes etc.

*

GROUP 121. MISCELLANEOUS
ARTICLES OF MANUFACTURE
NOT HERETOFORE
CLASSED.

259. **Liljeblad, Fr.**, Stockholm.
Painted escutcheons for decoration.

260. **Strindberg, A. G.**, Stockholm.

Flags with flag-staffs and acorns.

DEPARTMENT K.

FINE ARTS;
PAINTING, SCULPTURE,
ARCHITECTURE AND DECORATION.

GROUP 139. SCULPTURE.

CLASS 820.

261. Eriksson, Christian,
Sculptor, Paris.
Carl v. Linné, plaster relief.
»1789», marble.

262. Hasselberg, Per, *Sculptor*,
Stockholm.
The Snow-drop, plaster statue.
The Frog, plaster statue.
The Water-lily, plaster statue.
Louis de Geer, plaster bust.

263. Matton, Ida, Paris.
»Mama», marble statue.

264. Nyström, Alfr., *Sculptor*,
Stockholm.
The Lion of Gothia, plaster.

265. Söderman, N. Aug.,
Stockholm.
¹John Ericsson, plaster statuette.

266. Åkerman, W., *Sculptor*,
Paris.
Madonna, plaster relief.
»Sensitiva».

CLASS 821.

267. Lundberg, Th., *R. A. of
Fine Arts*, Stockholm.

¹Relief for the decoration of
a mantel.

CLASS 822.

268. Börjesson, John, *Profes-
sor R. A. of Fine Arts*, Stock-
holm.

The Brothers, bronze group.

269. Eriksson, Christian,
Sculptor, Paris. (See No. 261.)
»Blindman's buff», bronze vase.

270. Hasselberg, Per, *Sculptor*,
Stockholm. (See No. 262.)

H. R. H. Prince Eugen, bronze
bust.

Mr Olof Wijk, bronze statuette.
Mr P. Fürstenberg, bronze stat-
uette.

*

GROUP 140. PAINTINGS IN OIL.

271. Albert, G., Paris.
French landscape.

272. Andersson, J. A. G.,
Stockholm.
Winter fishing.

¹Saltwater fishing in winter.
¹Skating with sails.

273. Arborelius, O., Stockholm.

Dept. K exhibited in Fine Art Gallery except
¹ Swedish Pavilion.

- ¹ Landscape in Dalecarlia.
Driving hay in Dalecarlia.
Sunday morning in Dalecarlia.
Bridal procession in Dalecarlia.
274. Beer, A., Stockholm.
¹ The Castle of Tidö.
275. Behm, Wilh., Gnesta.
¹ Landscape with birch-trees from Södermanland.
Winter landscape.
¹ View of Ljungans river-valley in the province of Medelpad.
276. Bergh, R., Stockholm.
Portrait (Miss E. B.)
An old song.
Landscape.
277. Björck, O., *R. A. of Fine Arts*, Stockholm.
Portrait of Baron J. M. Nordenfalk.
Interior of cow-house.
278. Bonnier, Eva, Stockholm.
My housekeeper.
Music.
Portrait (Mr H. L.).
279. Borg, A., Örebro.
¹ Cattle market in the province of Nerike.
¹ Elk-hunting.
280. Bredberg, Mina, Stockholm.
Portrait of a Russian artist.
281. Chadwick, E., Stockholm.
Carmencita.
Rainbow.
»My boy».
282. Ekström, P., Segerstad, Öland.
Moon-rise, Särö.
Breaking up of the ice, Oscarshamn.
Day dawn, Normandy.
Landscape from Marstrand.
December mid-day sun, Öland.
Autumn, Öland.
283. Ericsson, Joh., Gothenburg.
Moon-rise.
284. H. R. H. Prince Eugen, *of Sweden and Norway*, Stockholm.
The forest.
Autumn day.
The temple.
285. Genberg A., Stockholm.
¹ View of the Tottehumeln, Jämtland.
¹ View from Åre, Jämtland.
¹ View from Mount Åre, Jämtland.
286. Hagborg, Aug., Paris.
Beggar.
Evening.
Low tide.
»Bijou and Honoré».
287. Hermelin, O., Baron, Österby, Torshälla.
Autumn.
288. Jansson, Eug., Stockholm, Twilight in May.
289. Jungstedt, Ax., *R. A. of Fine Arts*, Stockholm.
¹ Portrait of H. R. M. the King of Sweden.
Railway-navigators.
290. Keyser, Elisabeth, Stockholm.

¹ Exhibited in Swedish Pavilion.

- Peasant woman from Normandy.
291. Kindborg, J., Stockholm.
¹The river Nors in Werm-land.
292. Kjellin, C., Sala.
¹Charcoal burning in West-
 manland.
¹Iron foundry in Bergslagen.
293. Kreüger, Nils, Warberg.
 Summer evening.
 Street view from Warberg.
 Evening.
 Winter Idylli.
 Evening.
294. Kronberg, Julius, *Pro-
 fessor R. A. of Fine Arts*,
 Stockholm.
¹Portrait of Charles XII.
295. Kulle, J., Stockholm.
¹Interior of a peasant cottage
 in Scania.
296. Larsson, Carl, Gothenburg.
 My family.
 »Ulf» in the sunset.
 A Swedish fairy-tale.
297. Liljefors, Bruno, Upsala.
¹A bear hunt.
¹Fox-hunting.
¹Bird-shooting.
 Hawk's nest.
 Foxes.
 Wild geese.
 Night.
 Capercaillie shooting.
298. Lindholm, B., Gothenburg.
 Rocks, Scania.
 The Cattedgat off Halland's
 Väderö.
299. Lindman, Ax., Stockholm.
 Terrace from Positano.
 Way along the coast at Amalfi.
- View of Capri with Castig-
 lione and Monte Salaro.
 Surf at Bagno di Tiberio.
 Naples, Riviera di Chiaia.
300. Lindström, A. M., Stock-
 holm.
¹Landscape in Westman-
 land.
301. Lundström, Ernst, Stock-
 holm.
 »The Berzelii Park» at Stock-
 holm.
 The Norrström river at Stock-
 holm.
302. Nordström, Karl, Hoga,
 Bohuslän.
 The yellow house.
 Winter landscape.
 Twilight.
 In winter-harbour.
 Sunset.
303. Norrman, H., Tranås.
 Autumn.
304. Pauli, G., Stockholm.
 Legend.
 Midsummer's night.
 Winter morning in Stock-
 holm.
305. Pauli, Hanna, Stockholm.
 Portrait (Vennie S.).
 Portrait (The artist K. Nordström).
 The »name's-day».
306. Rosen, G. von, *Count*,
Professor R. A. of Fine Arts,
 Stockholm.
 Nordenskiöld.
 Portrait (Count Lagerberg).
 Portrait (Professor G. W. Palm).
307. Rosenberg, Edv., Stock-
 holm.

¹ Exhibited in Swedish Pavilion.

- ¹View of Norrström and the Royal Palace of Stockholm.
308. Saltza, Carl Fr. von, Baron, St. Louis, Miss. Portrait.
309. Schultzberg, A., Grangärde, Sweden.
The first fall of snow.
The last sun-beam.
Evening, Picardy.
310. Schulzenheim, Ida von, Stockholm.
Too hot.
Greyhounds.
311. Sparre, Emma, Baroness, Stockholm.
An interior from the Castle of Gripsholm.
¹Rowing to church in Dalecarlia.
312. Stolpe, Marie-Louise, Stockholm.
¹In memoriam Linnæi.
313. Svensson, C. F., Stockholm.
¹View of Öresound.
¹View of the entrance to Stockholm by sea.
314. Thegerström, R., Stockholm.
A calm.
315. Tirén, J., Stockholm.
¹Gullö Rapids, Trollhättan.
¹Lapplander's settlement at Kebnekaise, Lappland.
316. Trädgårdh, Carl, Paris.
Going to market.
Shepherd girl.
317. Törne, Alfr., Stockholm.
¹A study from Nämndö in the archipelago of Stockholm.
¹Fishing for pike.
Oat-harvest.
318. Vallgren, Antoinette, Paris.
»Bretonne».
319. Wahlberg, Alfr., *Professor*, *R. A. of Fine Arts*, Paris.
Night on the Swedish coast.
Evening, Halland's Väderö.
Stockholm in moon-light.
Misty night, Oise.
River Landscape, Eure.
Morning, Oise.
View from the west coast of Sweden.
320. Wahlström, Charlotte, Stockholm.
Moon-rise.
321. Wallander, Alf, Stockholm.
»Putte».
322. Westman, Edv., Stockholm.
Spring evening.
Hay-making in Normandy.
323. Zorn, And. L., Paris.
»Margit».
Omnibus.
Ball.
Fair in Mora.
A toast in »Idun».
A Forest study.
Sunset.
324. Österlind, Allan, Stockholm.
The Orphans.

*

¹ Exhibited in Swedish Pavilion.

GROUP 141. PAINTINGS IN
WATER COLORS.

325. Boberg, Anna, Stockholm.
Venice.
Gondolas.
View from Menaggio.
326. Ericsson, Anna, Gothen-
burg.
View from Ronneby.
Moon-rise.
327. Gellerstedt, A. T., *Pro-
fessor*, Stockholm.
¹Swedish views.
328. Hermelin, T., Baron,
Stockholm.
¹Grave stones from heathen
times on Sela Island.
¹Graves of heathen kings at old
Upsala.
329. Jolin, Ellen, Stockholm.
The Baptistery of Sienna.
330. Larsson, Carl, Gothen-
burg. (See No. 296.)
Portrait (Mrs. F.).
Interior of Dalecarlian peas-
ant's cottage in winter-time.
331. Tirén, J., Stockholm. (See
No. 315.)
¹Lapps pursuing runaway rein-
deer.
¹Lapp running on snow-
skates.
¹A herd of rein-deer.
¹Climbing the Paranki Koski
in the Torne River by the aid
of stocks.
¹Voyage down the Maras Linka
Falls in the River Torne.

*

¹ Exhibited in Swedish Pavilion.

GROUP 142. PAINTINGS ON
IVORY, ON ENAMEL, ON METAL,
ON PORCELAIN OR OTHER
WARES; FRESCO PAINTING ON
WALLS.

332. Althin, C., Stockholm.
¹Decorative painting.
333. Andrén, V., Stockholm.
¹Decorative painting on gold-
ground. (Exit.)

*

GROUP 143. ENGRAVINGS
AND ETCHINGS; PRINTS.

334. Boberg, F., *Architect*, Stock-
holm.
Birger Jarl.
The Church of Catherine, Stock-
holm.
Interior of Italian yard.
The choir of San Marco in
Venice.
335. Haglund, R., Stockholm.
The German Church in Stock-
holm.
The Kornhamn, Stockholm.
The Fürstenberg art gallery
in Gothenburg.
336. Haig, A. H., Haslemere,
Surrey, England.
The Cathedral of Burgos.
Arab Students, Cairo.
Arab quarters, Cairo.
In Rhineland.
Towing in the prize.
Wisby, twilight.
Stockholm.
337. Rosen, G. von, Count,
Professor, R. A. of Fine Arts.
Stockholm. (See No. 306.)
Six etchings.
338. Zorn, And. L., Paris. (See
No. 323.)
Five etchings.

*

GROUP 144. CHALK, CHAR-
COAL, PASTEL AND OTHER
DRAWINGS.

339. Andrén, V., Stockholm.
¹Views and types from Stock-
holm.

340. Björck, O., *R. A. of Fine
Arts*, Stockholm. (See No. 277.)
Portrait-study.

341. H. R. H. Prince Eugen
of Sweden and Norway, Stock-
holm. (See No. 284.)
Summer-day.

342. Jansson, Eug., Stockholm.
(See No. 288.)

Venus.

343. Liljefors, Bruno, Upsala.
(See No. 297.)

Eight drawings.

344. Nordström, Karl, Hoga,
Bohuslän. (See No. 302.)

Night.

Moon-rise.

Day-Dawn.

Moon-light.

345. Wallander, Alf, Stock-
holm. (See No. 321.)

A Poulterer's.

Evening sun.

Coffee-party sixty years ago.

¹ Exhibited in Swedish Pavilion.

DEPARTMENT L.

LIBERAL ARTS. EDUCATION, LITERATURE,
ENGINEERING, PUBLIC WORKS;
MUSIC AND THE DRAMA.

GROUP 147. PHYSICAL
DEVELOPMENT, TRAINING
AND CONDITION-HYGIENE.

CLASS 825.

346. Kongl. Gymnastiska
Centralinstitutet, *Royal In-
stitute of Gymnastics*, Stock-
holm.

Series of illustrations of gym-
nastic movements and postures,
belonging to the system adopted in Sweden.

Model of gymnastic hall with
complete set of implements, adap-
ted for a public high-school; the design
made by Martin Borgstedt, architect;
manufacturer E. G. Ekstrand, cabinetmaker.

Collection of photographs of
gymnastic halls from different parts
of the country.

Sundry detached implements
in full size.

Details and sections of imple-
ments (manufactured by E. G. Ekstrand).

Copies of model drawings for
gymnastic halls and for imple-
ments.

Set of fencing materials, used
and new, from the Royal Institute of
Gymnastics.

347 Dahlgren, Carl Walfrid,
Eskilstuna. (See No. 246.)
Skates.

348. Ekstrand, E. G., Stock-
holm. (See No. 440.)

Apparatus for Swedish gym-
nastic hall.

Prev. aw. Brussels 1880, Antwerp 1882,
London 1884, Paris 1889, Scheveningen
1892.

349. Föreningen för Skidlöp-
ningens främjande i Sve-
rige, *The Swedish Snow-skate
Club*, Stockholm. (See No. 440.)

Various models of snow-skates
and other equipment, from different
districts.

Sledges propelled by the foot,
and sledges for tobogganing.

Prev. aw. Scheveningen 1892.

350. Langborg, Helmer, Stock-
holm. (See No. 440.)

Skates.

351. Liberg, B. & O., Eskilstuna.
(See No. 440.)

Skates.

352. Posse, Nils, Baron, Boston.
(See No. 440.)

Apparatus for Swedish gym-
nastic hall.

Drawings and photographs re-
lative to gymnastics.

353. Kgl. Svenska Segelsäll-
skapet, *Royal Swedish Sailing
Club*, Stockholm. (See No. 440.)

Full length sections of the boat
types used by the Royal Swedish Sail-
ing Club ever since its foundation.

Rigged models of yachts and fishing boats from the coast of Sweden.

354. Stockholms Gymnastik-förening, *The Gymnastic Society of Stockholm.* (See No. 440.)

Agent in Chicago: Baron Nils Posse, 23 Irvington Street, Boston, Mass.

Apparatus for Swedish gymnastic hall, as: wall bars, boom with saddles, wooden vaulting horse, plinth, horse (buck), jumping-block, horizontal ladder, climbing vertical rope, cross-rope, climbing vertical poles, stays, forms, etc.

All the objects are made in full size and are similar to those now in use.

Photographs and drawings of gymnastic exercises and gymnastic halls, athletic meetings etc. literature on gymnastics, games and athletic sports.

Prev. aw. Brussels 1877, 1880, Paris 1889.

355. Stockholms Gymnastik- och Fäktklubb, *The Gymnastic and Fencing-Club of Stockholm.* (See No. 440.)

Agent in Chicago: Baron Nils Posse, 23 Irvington Street, Boston, Mass.

Fencing materials, as: helmets, plastrons, fencing gloves, fencing masks, foils, swords, arms for bayonet fencing.

Literature and photographs on fencing, etc.

356. Stockholms Allmänna Skridskoklubb, *The General Skating-Club of Stockholm.* (See No. 440.)

Skates for figure-skating.

Racing, and military skates.

Sails for sailing on skates, and other equipment.

Prev. aw. Scheveningen 1892.

357. Tull, N. P., Stockholm. (See No. 440.)

Sails for sailing on skates.

Models of ice-yachts.

Sleds propelled by the foot.

358. Aktiebolaget Vibrator, *The Vibrator Co. Lim,* Stockholm.

Sole agent for U. S. A., N. Lilienberg, Engineer, 150 Broadway, City, New-York.

Vibrator, kinesipathic apparatus, a substitute for manual treatment in vibratory movements; a requisite for physicians and masseurs, easily managed by anybody.

CLASS 829.

359. Aktiebolaget Kuntze & Co., *Kuntze & Co. Lim.,* Stockholm.

Water filters.

*

GROUP 148. INSTRUMENTS AND APPARATUS OF MEDICINE, SURGERY AND PROSTHESIS.

CLASS 839.

360. Engström, Joh., Eskilstuna. (See No. 247.)

Universal dental-forceps.

*

GROUP 149. PRIMARY, SECONDARY AND SUPERIOR EDUCATION.

CLASS 843.

361. Lundin, Hulda, *Directress of Needlework at the Public Schools of Stockholm.* (See also Wom. B.)

A series of models illustrating Miss Hulda Lundin's system of teaching needlework in schools. The models are made by pupils in the public schools (primary and grammar) of Stockholm.

CLASS 844.

362. Nääs Slöjdlärareseminarium, *Nääs Normal School for Training Sloyd-Teachers,* Nääs, Floda, Sweden.

A series of models illustrating the Nääs educational system of sloyd-carpentry, accompanied by explanatory tables showing:

1. A brief description of the system.
2. The methodical arrangement of the exercises contained in each model.
3. Statistics and information about the courses.
4. Photographs of the Normal School.

Drawings, construction diagrams and books.

Illustrated charts, showing various positions of the body at Sloyd-work, by Captain Carl Silow and Director Otto Salomon.

CLASS 847

363. Alnarps Hofbeslagare-skola, Alnarps Blacksmith's School, Åkarp.

Materials of instruction for shoeing, as: model horse-shoes, shod hoofs, hoof-preparation, and implements for shoeing.

Prev. aw. Sweden 1891.

364. Hushållningssällskapet i Blekinge Län Slöjdmagasinet, Agricultural Society of the Province of Blekinge.

The aim of the Society is the improvement and promotion of domestic industry and for this purpose a magazine has been opened in the city of Karlskrona, where models are lent and ready-made objects sold at a low commission. Since 1876 the Society has arranged an annual course of six weeks for the training of sloyd-teachers and the instruction of country-lads, who after having finished will carry on their work at home. The State sloyd-inspector and the instructor J. Wallander have acted as teachers at the school since 1879.

The activity of the Society has been an object of increasing interest on the part of workers as well as consumers.

The Society enjoys a Government grant.

Objects of wood and bone, textiles etc.; as well as

Series of models for wood sloyd in schools and

Drawings for models.

The objects first-mentioned are copied by the peasantry from the models of the Agricultural Society, and the series of models are executed by pupils of the school founded by the Society.

Prev. aw. Copenhagen 1888.

365. John Lennings Väfskola, John Lenning's Weaving School, Norrköping, Sweden.

The exhibited articles are entirely made in the school (except finishing), and all the sketches and designs employed are composed and calculated by the pupils under the teachers' direction.

The school was founded in 1887 and, theoretically as well as practically, instructs young men wishing to fit themselves for the textile trades. Lessons are also given to ordinary workmen of the wool- and cotton-mills, and to young women, for the purpose of making them acquainted with the domestic branch of textile manufacture.

Orders are received for any of the exhibits that may interest students of the weaver's craft, and will be most carefully executed.

Wall hanging of silk and gold.

Prev. aw. Gold medals Sweden 1889 1891.

366. Tekniska Skolan i Eskilstuna, Technical School of Eskilstuna, Eskilstuna.

Objects of steel, chased, etched and forged, worked by the pupils of the school.

367. Tekniska Skolan i Stockholm, The Technical School of Stockholm and its five Principal Sections, Stockholm.

Section A. Technical evening- and sunday-school.

Section B. Technical school for women.
Section C. Higher school for industrial arts.

Section D. Professional school for builders.

Section E. Professional school for mechanics.

Drawings,
Models and

Objects worked by the pupils in metal, wood, leather, porcelain, clay, plaster etc., comprising wainscot, ceiling, painted frieze, stained glass-window, sketches, decorative paintings.

CLASS 850.

368. Hallgren, E. & Sundell, R., Stockholm.

Plastic reproductions of mushrooms of a hardened substance.

Supplied to the Public Schools of Sweden by the Royal Ecclesiastical Department.

Have received several awards in Sweden.

CLASS 852.

369. Melander, A. E., *Architect*, Stockholm.

Kalkograf, apparatus for tracing drawings from one piece of paper to another, and for making blue prints.

*

GROUP 150. LITERATURE, BOOKS, LIBRARIES, JOURNALISM.

CLASS 854.

370. F. & G. Beijers Bokförlagsaktiebolag, F. & G. Beijer Publishing Business Co. *Lim.*, Stockholm. (See No. 121.)

Agent for U. S. A., Nils Quiding, 175 E. Chicago Avenue, Chicago.

Books and prints.

Maps.

371. Bonnier, Albert, *Publisher and Printer*, Stockholm.

Books and prints in Swedish.

372. Fahlcrantz & Co., *Publishers*, Stockholm. (See No. 121.)

Collection of books, published by the firm.

373. C. E. Fritzes Kgl. Hofbokhandel, *Fritze, C. E. Bookseller*. Purveyor to H. R. M., Stockholm. (See No. 121.)

Collection of books, published by the firm.

Prev. aw. Sweden 1886.

374. Hörlin, Hugo, *Architect*, Stockholm. (See No. 121.)

»Tidskrift för Konstslöjd» (Industrial Art Journal), edited by the exhibitor.

375. Lindell, Per, *Engineer*, Stockholm. (See No. 121.)

»Autografier och porträtt af framstående personer», (Autographs and portraits of eminent persons), edited by the exhibitor.

376. Mittag-Leffler, G., *Professor*, Honorary Member of the Cambridge Philosophical Society, Honorary Member of the London Mathematical Society, etc. Stockholm. (See No. 121.)

Acta Mathematica, scientific journal edited by the exhibitor.

377. Aktiebolaget P. A. Norstedt & Söner, P. A. Norstedt & Sons Co. *Lim.*, Stockholm.

Scientific and literary works. Wall-maps, Engravings and other kinds of material of instruction.

School books.

CLASS 855.

378. Aktiebolaget P. A. Norstedt & Söner, P. A. Norstedt & Sons Co. *Lim.*, Stockholm. (See No. 377.)

School-books.

Engravings and other kinds of material of instruction.

CLASS 864.

379. F. & G. Beijers Bokförlagsaktiebolag, *F. & G. Beijer Publishing Business Co. Lim.*, Stockholm. (See No. 370.)

Maps.

380. Dahlman, C. E., *Cartographer*, Stockholm.

Atlas containing: 1) Division of provinces; 2) Region of birch-wood, coal and iron-ore districts; 3) Review of language and population of the provinces, and of the high-schools 1892; 4) River-basins and review of railways 1892; 5) Ranges of animals and trees; 6) Waterways on the main land, navigable by steamer.

381. Generalstabens Topografiska Afdelning, *Topographic Division of the General Staff*, Stockholm.

Topographic Map, scale 1:100,000.

Elevation Map.

General Map.

Draught Map, scale 1:50,000 (specimen in phototype).

Outline Map, scale 1:50,000 (specimen in phototype).

Bound as Atlas: Topographic Division of the General Staff, Topographic Map of Sweden.

Books: Topographic Division of the General Staff, Topographic and Statistic Description of the Province of Kronoberg.

Ditto of Malmöhus.

Ditto of Kristianstad.

Astronomic and Geodetic Works.

Prev. aw. London 1862, 1874, Dublin 1865, Copenhagen 1872, Vienna 1873, Paris 1875, 1878, Philadelphia 1876.

382. Aktiebolaget P. A. Nor-

stedt & Söner, *P. A. Norstedt & Sons Co. Lim.*, Stockholm. (See No. 377.)

Wall-maps.

383. Kongl. Sjökarteverket, *Royal Hydrographic Office*, Stockholm.

Charts and coast views.

Prev. aw. Brussels, Copenhagen, Dublin, London, Paris, Venice, Vienna.

384. Sveriges Ekonomiska Kartverk, *Economic Survey of Sweden*, Stockholm.

Maps: Part of the Province of Vermland, scale 1:50,000.

Province of Norrbotten, northern part, scale 1:200,000; Bound as Atlas: Economic Survey of Sweden, Province of Vermland.

Province of Örebro.

Topographic and Economic Map of the Province of Norrbotten.

Books: Economic Survey of Sweden, Description of the Economic Map of the Province of Vermland.

Ditto of the Province of Örebro.

Ditto of the Province of Norrbotten.

Prev. aw. London 1862, Dublin 1865, Paris 1875, 1878, Philadelphia 1876.

385. Sveriges Geologiska Undersökning, *Geological Survey of Sweden*, Stockholm. (See No. 35.)

Detailed geological maps of mining-districts, sections of mines.

General geological map of the southern half part of Sweden and

Map showing location of quarries etc.

Geological maps, showing the surface distribution of the different quaternary deposits as well as of the uncovered parts of the underlying rocks, on the sea-

les 1:50,000, 1:100,000 (showing also the topography) and 1:200,000 etc., comprising different provinces and other large districts of Sweden.

Also all the other maps and printed papers published by the Geological Survey.

*

GROUP 151. INSTRUMENTS
OF PRECISION, EXPERIMENT,
RESEARCH AND PHOTO-
GRAPHY. PHOTOGRAPHS.

CLASS 866.

386. Sohlberg, K. H., *Ph. D.*,
Strengnäs.

Celestial globe of glass with horizon in liquid fluids, for normal schools, ditto for primary schools.

These celestia globes illustrate not only the phenomena referable to the daily movement of the sphere of the heavens, but also those caused by the sun's apparent yearly motion in the ecliptic, at any place on the earth.

Prev. aw. Price medal at the 3rd. International Geographical Congress at Venice 1891.

CLASS 867.

387. Ahlberg & Ohlsson, *In-
strument-makers*, Stockholm.
(See No. 401.)

Case of mathematical instruments.

Surveying instruments.

They are distinguished by the great care and precision bestowed on their manufacture.

388. Hadar Hallströms Knif-
fabriks Aktiebolag, *Knife
Manufacturing Co. Lim.*, by
Hadar Hallström, Eskilstuna.
(See No. 250.)

Case of mathematical instru-
ments.

389. Aktiebolaget Mars, *The
Mars Co. Lim.*, by Wilhelm
Unge, Stockholm.

Unge's Telemeter (Range finder) is intended for military use, topographical surveying and geographical research, adopted for military purposes by the Swedish ordnance and artillery of position and the Norwegian field-artillery; under proof by the Ordnance Departments of America, France and Austria. The Telemeter will survey distances at 15,000, 30,000 and 50,000 metres (50 kilometres). An arbitrary point is chosen for mark; in the dark any luminous point will serve as mark; in light or dark the Telemeter will survey distances *between* two remote points, *inaccessible* but still visible from the place of observation.

The Telemeter is composed of 1 instrument, 1 directing-plane and 2 supports. Trigonometrical surveying is the theory, and the base-line as well as the angle of the mark may vary. The base may thus be chosen arbitrarily within a certain limit, and consequently there is no necessity for its being perpendicular to the line of the mark. The shortest base line is 5 paces, the longest one 50 paces.

Warranted not to err more than one per cent of the distance within 6,000 metres. Patent in U. S. A. and Europe.

389 a. Rose, J. L., *Instru-
ment-maker*, Upsala.

Magnetometer, constructed by professor R. Thalén, to use in exploring for iron ores and other magnetic deposits. (Exhibits in common with the Geolog. Survey of Sweden.)

CLASS 871.

390. Blomqvist, C. G., *Photo-
grapher*, Luleå. (See No. 440.)
Photographs.

391. Jonason, A., *Photographer*,
Gothenburg. (See No. 440.)
Photographs.

392. Olsson, A., *Photographer*,
Östersund. (See No. 440.)
Photographs.

393. Olsson, O., *Photographer*.
Östersund. (See No. 440.)
Photographs.

394. R. Sammland, *Photographer*,
Kristianstad. (See No. 440.)
Photographs.

395. Sjöberg, Axel & Co., *Photographer*,
Karlsborg. (See No. 440.)
Photographs.

396. Wahlström & Widstrand,
Photographers, Stockholm. (See
No. 440.)
Photographs.

CLASS 873.

397. Linderöth, G. W., *Watch-
maker*, Stockholm. (See No. 164.)
Chronometers. (Exit.)

*

GROUP 152. CIVIL ENGI-
NEERING, PUBLIC WORKS,
CONSTRUCTIVE ARCHITECTURE.

CLASS 889.

398. Eskilstuna Träföräd-
lingsfabriks Aktiebolag,
*Eskilstuna Wood Manufacturing
Co. Lim.*, Eskilstuna.
Show-case.

399. Wickman, G., *Architect*,
Stockholm.
Swedish Pavilion.

*

GROUP 158. MUSIC AND
MUSICAL INSTRUMENTS.

THE THEATRE.

CLASS 930.

400. Hagdahl, Joh., *Piano-
Manufactory*, Karlskrona.

Agent at Chicago: Oscar Larsson.
Upright piano, constructed by the
exhibitor; the frame carved in ancient
Northern style.

Prev. aw. 1 silver medal.

CLASS 934.

401. Ahlberg & Ohlsson, *In-
strument-makers*, Stockholm.
Makers to the Swedish Army
and Navy the Royal Academy
of Music and the Royal Opera
in Stockholm.

Brass instruments.

Export to several places in Europe
and America.

The instruments are recommendable
by their being easily managed and kept
in tune, as well as for the solid and care-
ful construction and good materials em-
ployed.

*Mathematical instruments.**Surveying instruments.*

The instruments are distinguished by
the great care and precision bestowed on
their manufacture.

Prev. aw. London 1851, Moscow 1872,
Philadelphia 1876, Copenhagen 1888, Swe-
den 1851, 1866.

CLASS 937.

402. Byström, O., *Professor*,
Stockholm.

»The most popular melodies
of the Swedish hymn-book, used
at public worship, with organ
accompaniment by O. Byström».

»Hymn from Dalecarlia», with
certificates of English, Belgian and French
authorities as to its peculiarly characteri-
stic form.

DEPARTMENT M.

ETHNOLOGY, ARCHÆOLOGY, PROGRESS OF LABOR AND INVENTION.

GROUP 159. VIEWS, PLANS
OR MODELS OF PREHISTORIC
ARCHITECTURAL MONUMENTS
AND HABITATIONS.

CLASS 941.

402 a. **Bovallius, C.**, *Fellow
of the University of Upsala.*

Model of a temple from Central
America;

Cast model of a vase from Cen-
tral America;

Books and engravings on the
archæology of Central America.

403. **Nordenskiöld, G.**, Junior,
Stockholm.

Photographs from the Cliff
dwellings of Colorado.

Model of an estufa from the
Cliff dwellings of Colorado.

*

GROUP 165. HISTORIC
ARCHÆOLOGY. OBJECTS
ILLUSTRATING THE PROGRESS
OF NATIONS.

404. **Baltzer, C. E. L.**, *Head
Teacher of Drawing at the
Public College and Technical
School of Gothenburg.* »Officier
d'Academie», Gothenburg.

Rock engravings of Bohuslän
(Sweden), 15 cartoons drawn and edited
by the exhibitor, preface by Professor
Victor Rydberg, with explanatory book.

Plaster cast, direct copy from
ancient rock engravings.

Prev. aw. Medal of the Academy of
Letters, History and Antiquity 1878,
Officier d'Academie (Order of merit for
this work) 1890.

*

GROUP 167. REPRODUC-
TIONS OF ANCIENT MAPS,
CHARTS AND APPARATUS
OF NAVIGATION.

CLASS 951.

405. **Nordenskiöld, A. E.**, Bar-
on, Stockholm.

Reproductions of remarkable
maps and globes of the 16th.
century.

*

GROUP 168. MODELS AND
REPRESENTATIONS OF AN-
CIENT BUILDINGS, CITIES,
OR MONUMENTS OF THE
HISTORIC PERIOD ANTERIOR
TO THE DISCOVERY OF AMERICA.

406. **Rosman, Sven**, Wisby.
(See No. 440.)

Model of the Church of the
Holy Ghost at Wisby.

The Committee of Swedish Ladies.

Patroness.

H. R. M. The Queen of Sweden.

President.

Ankarsvärd, Ellen, f Nyström. Stockholm, Sweden.

Secretary.

Ulrich, Anna. Stockholm, Sweden.

GROUP 172. WOMAN'S
WORK.¹

407. *The Committee of Swedish Ladies* will exhibit in Woman's Building:

I.

Calendar containing the history and chronologically compiled statements of the social position of woman in Sweden.

II.

Portfolio containing statistics on:

1. Women students at the Universities of Sweden.
2. Woman's work in:
 - a) High-schools for girls.
 - b) Common- and primary schools.
 - c) Practical schools.
 - d) Schools for abnormal children.
3. Woman's work in:
 - a) Public service, viz. post- and telegraph-offices, etc.
 - b) Banks, insurance companies, etc.
4. Woman's work in trade and industry.
5. Woman's work in hygiene and attendance on the sick:
 - a) At hospitals.
 - b) As doctors, gymnasts and sick-nurses.

¹ Exhibited in Woman's Building.

6. Woman's philanthropical work:
 - a) For home and foreign mission.
 - b) For morality and temperance.
 - c) For the attendance on children, paupers and prisoners.
 - d) For the prevention of cruelty to animals.

7. Woman's work for national defence of the country.

III.

1. Literary products of the most prominent Swedish authoresses and their portraits.
2. Printed catalogue of the collected works of Swedish authoresses with historical review.
3. Portraits of St. Bridget and Fredrika Bremer.

IV.

1. History and biography of women artists and musicians.
2. Works of women composers.
3. Portraits.

V.

Illustrated album of women's art-industry.

408. *Handarbetets Vänner, Friends of Handiwork*, Stock-

holm. (See also No. 203 Swed. Pav.)

Association for the improvement of Swedish women's art industry for artistic and patriotic purpose.

School for sewing and weaving; permanent exhibition and sale of textile fabrics.

The Association is managed entirely by ladies and all the designs employed are composed by women artists.

Founded in 1874. (See Gen. Cat. Dept. H, Group 106, Class 669, 670.)

- a. **Portière of national texture and design**, technics »rödlakan» and »dukagång».
- b. **Album containing samples of pillow-lace from Scania and Dalecarlia.**
- c. **Altar furniture**, the design in roman style composed by Miss A. Branting, comprising: antependium, technics »applied embroidery» with gilt leather outlines; palla, technics hem-stitch; pulvinar, technics outline embroidery of gilt leather.
- d. **Hanging** copied from a texture of the 11th century belonging to the State.
- e. **Portière with haute-lisse border**, copied from a piece of tapestry of the 16th century, now belonging to the State; technics haute-lisse tapestry, made by Hanna Persson.
- f. **Haute-lisse tapestry**, the design composed by Miss A. Branting, made by Karna Nilsson.
- g. **Folding screen**, the design in national style composed by Miss K. Petré, technics feather-stitch.
- h. **Portière of national texture and design**, technics »rödlakan».
- i. **Cushion**, the design motive from the sunflower, composed by Miss A. Branting; technics feather-stitch.

Prev. aw. Handarbetets Vänner, Friends of Handiwork, have received

awards at the following expositions: Philadelphia 1876, Amsterdam 1877, Christiania 1877, Paris 1878, Copenhagen 1879, 1888, Glasgow 1888, and many Swedish expositions.

409. Lundin, Hulda, Directress of Needlework at the Public Schools of Stockholm. (See also No. 361 Swed. Pav.)

A series of models illustrating Miss Hulda Lundin's system of teaching needlework in schools.

The models are made by pupils in the public schools (primary and grammar) of Stockholm.

410. Kulle, Thora, Mrs., Lund. (See also No. 110 Swed. Pav.)

- a. **The Swedish Royal Arms**, technics: »rödlakan» (for decoration).
- b. **Counterpane**, technics: »opp-henta».

Prev. aw. Copenhagen 1888, Stockholm 1887, Gothenburg 1891 and several other Swedish expositions.

411. Olsson, Cilluf, Mrs., Kjöf-linge, Scania. (See also No. 111 Swed. Pav.)

Linen »drättaduk» (hangings for wall, or ceiling decoration), technics: »dukagång».

Prev. aw. Copenhagen 1888, Gothenburg 1891 and other Swedish expositions.

412. Olsson, Bengta, Miss, Bjer-röd, Flädie, Scania.

Gobelin tapestry.

Prev. aw. Copenhagen 1888, Sweden 1888, 1889, 1891, 1892.

413. Brunsson, Johanna, Miss, Stockholm. (See also No. 106. Swed. Pav.)

Portière of national texture and design.

414. Nilsson, Emilie, Miss, Wermland. (See also No. 193 Swed. Pav.)
Two linen towels with plaited fringes, technics called »shepherd girls' work».
415. Ingelotz, Aurora, Miss, Wadstena.
Pillow lace.
Lace-making has been carried on at Wadstena ever since the time of St. Bridget in the 14th century.
Prev. aw. Paris 1855, 1867, Vienna, Constantinople, Stockholm 1866, Gothenburg 1891, and other places.
416. Randel, Ch., Mrs., Wadstena.
a. Wadstena pillow lace for church use.
b. Vellum in silk embroidery.
417. Wengberg, Clara, Miss, Helsingborg.
Pillow lace border for pocket handkerchief.
418. Åhrberg, Ebba, Mrs., Upsala. (See also No. 113. Swed. Pav.)
Antimacassar; Sofa and chair covers in guipure lace-work.
419. Giöbel, Selma, Miss, Stockholm. (See also No. 204. Swed. Pav.)
Folding screen in Icelandic style.
Prev. aw. Moscow 1872, Vienna 1873, London 1874, Finland 1875, Paris 1876, 1878, Antwerp 1882, Gothenburg 1891, Norway 1877, and several other expositions.
420. Zickerman, Lilli, Miss, Sköfde. (See also No. 206. Swed. Pav.)
Embroidered portière.
Prev. aw. Gothenburg 1891.
421. Schuberth, Mathilda, Mrs., Elfsjö, Stockholm.
Embroidered pocket handkerchief with reproductions of the Swedish Royal Arms, the Swedish flag, and the Royal Palace at Stockholm.
Prev. aw. Stockholm 1866.
422. Holck, Helene, Miss, Stockholm.
a. A pair of vases, the design in Assyrian style;
b. A pair of vases, the design in Old Scandinavian style, painted by the exhibitor.
The designs employed are composed by the exhibitor.
Prev. aw. Gothenburg 1891.
423. Grafström, Julie, Miss, Stockholm.
a. Cover for hymn-book of chased silver.
b. Cup of chased silver.
424. Meukow, Anna, Miss, Stockholm.
Large drinking-cup and goblets of coppered britannia-metal with engraved ornaments.
425. Juel, Rosalie, Mrs., Stockholm.
Water cistern and goblets of chased copper.
426. Boklund, Cecilia, Miss, Stockholm.
Painted glass-window, framed.
427. Pettersson, Hilda, Mrs., Stockholm.
Glass etchings and designs for this kind of work, cups etc.
Prev. aw. at many Swedish exhibitions.
428. Lindberg, Lydia, Miss, Stockholm. (Exit.)
Portfolio of embossed leather, containing statistics.

429. Meukow, Gustava, Miss,
Stockholm.

Portfolio of embossed leather,
containing statistics.

Bible cover of embossed lea-
ther.

Prev. aw. Gothenburg 1891.

430. Nordquist, Marianne,
Miss, Stockholm. (See also
No. 213. Swed. Pav.)

Portfolio of embossed leather.

431. Retzius, Anna, Mrs., Stock-
holm.

Plaster bust of Fredrika Bre-
mer.

432. Ahlborn, Lea, Mrs., Stock-
holm.

Royal Medal & Coin-engraver since
1853; R. A. of Fine Arts, Stockholm,
Honorary Member of the Imperial Art
Academy of St. Petersburg, Honorary
Member of the Numismatic Societies
of Philadelphia, Boston and New-York;
Holds the Swedish medals: »Litteris et
Artibus» and »Illis quorum meruere
labore», and the: »Für Wissenschaft und
Kunst», of Mecklenburgh.

Medal engraving:

Carved walnut show-case composed
of two inclined escutcheons with 73
medals.

The escutcheons are crowned by the
Swedish Royal Arms supported by an
ornament; the photograph of the exhib-
itor is placed below.

**Sculpture; 14 bronze reliefs
representing:**

- 1) Washington, full length,
- 2) The landing of Christopher Colum-
bus at San Salvador,
- 3) Effigy of Christopher Columbus,
- 4) Baltzar Bogislaus von Platen, full
length,
- 5) Effigy of King Gustavus III, sup-
ported by Eloquence (Mercury) and
crowned by Poetry,
- 6) Christian Poetry, full length,

7) Ceres, surrounded by agricultural
emblems,

8) Sower, full length,

9) Axel Oxenstierna, full length,

10) Hermes, full length,

11) History Calliope, full length,

12) Svea with the civic arms of Sunds-
vall,

13) A workman and the goddess of
Opulence,

14) Medal of Consul Oscar Ekman.

Prev. aw. Paris 1878 and 1889.

433. Lindgren, Hilda, Miss,
Gothenburg.

Portrait of H. R. M. The Queen
of Sweden.

434. Boberg, Anna, Mrs., Stock-
holm.

Decorative painting on Folding
screen, imitation gobelin.

435. Adelborg, Ottilia, Miss,
Stockholm.

Original drawings for picture-
book: »The princes' flower-
alphabet».

436. Gisberg, Sofia, Miss, Stock-
holm.

Specimen of illuminating.

437. Widebeck, Maria & Wäst-
berg, Carin, Misses, Stock-
holm.

Psalms, written in church text
on parchment and richly illumi-
nated.

Prev. aw. Gothenburg 1891.

438. Karlholm, Hedda, Miss,
*Cartographer of the Economic
Survey of Sweden*, Stockholm.

Geological map of a part of
central Sweden.

Collection of minerals illustra-
ting the map.

Prev. aw. Stockholm 1866, 1886.

GROUP 173. STATE, NATIONAL
AND FOREIGN GOVERNMENT
EXHIBITS.

439. Nordiska Museet, *The
Ethnographical Museum of the
North*, Stockholm.

The Ethnographical Museum of the North, the aim of which is to illustrate in the best manner possible the life and culture of the Scandinavian nations in past times, was founded by Dr. A. Hazelius in 1873.

In spite of the economic difficulties to be conquered, the progress of the Museum was uninterrupted, and in 1880 when Dr. Hazelius made it an independent institution and the property of the Swedish nation, the collections comprised more than 26,000 objects, viz: costumes, textiles, embroideries, wood carving, furniture and household utensils of every kind, porcelain, glass, ornamental pottery and art metal work, implements for hunting, fishing, and various trades, stuffed animals, reproductions of ancient Scandinavian objects of art industry, musical instruments, objects illustrating the ancient guilds and their regulations, 5 interiors of Swedish peasant's homes and landscape views, a considerable collection of portrait engravings, prints and books, etc.

After this time the development of the Museum has progressed at an exceptional rate, at the close of 1892 the collections contained 74,000 objects. In consequence of this rapid development the number of show-rooms has been increased. The very next year after the opening of the Museum, a new section was added, in 1875 *the First Annex* and in 1878 *the Second Annex*. In 1890 the villa Framnäs at Djurgården was given to the Museum by Count W. v. Hallwyl for the purpose of exhibiting the study of John Ericsson, objects from Stockholm of the past, etc. In 1891 the »Skansen», Belvedere and park were pur-

chased, and several old Swedish buildings have been erected in these localities in the course of 1891 and 1892.

1. *Autumn Moving in the Lapp-district of Lule*. In surroundings of the type belonging to Kvikkjokk, a Lapp family is represented when engaged in the annual autumn removal from the alps to the lowlands. A provisional camp has been erected in the vicinity of the parochial chapel of Kvikkjokk, of which a glimpse is caught in the background of the landscape. Only the father in the »pulka» (the Lapp name for sleigh) is visible and a young man on snow-skates, coming home from hunting and carrying his catch, a glutton's skin on his shoulder.

2. *Interior of peasant's cottage from the parish of Rättvik in Dalecarlia*. The figures are copied from the popular picture of Amalia Lindegren, called »Baby's last bed». Beside the cradle, where the baby girl is yet lying, the mother is kneeling and the father is seated with one of the remaining children at his side. The man in the background is the grandfather, and the woman next to the door is the godmother of the child. With regard to the interior it may be worth mentioning that every piece of furniture is brought from Rättvik.

3. *Young girls from Österåker in the province of Södermanland*, group arranged from the picture of J. W. Wallander, called »Yes, No, Yes, No», representing two young girls who consult the ox-eye-daisy regarding a love-affair. The costume, the summer-dress worn by young girls of the parish of Österåker as late as in the sixties, is one of the handsomest ever found amongst the Swedish peasantry.

4. *Youth and girl from the parish of Östervallskog in the province of Wermland*. The young »jänta» (girl) is spinning on a distaff,

an implement still used in remote parts of Sweden. The costume of Östervallskog like most Swedish national costumes, is now gone out of use.

5. **Young girl from Östra Härad, in the province of Blekinge.** Her dress shows the typical summer costume worn by young girls in the Fifties. The head-gear, the so-called »valk», consists of a round wooden plate, covered with red cloth and ornamented all over the crown with silk embroidery. This head-gear however was intended only for holiday-use, and did not belong to the usual Sunday-dress. The red skirt and a quantity of silver trinkets, as necklets, bead necklaces and pins of various forms and sizes, are characteristic features of the outfit of a young girl or a bride.

6. **»Höste-grebban» (Harvest girl), young girl from the district of Herrestad in Scania.** Her dress, consisting of a chemise only — the so-called »höste-särken» (harvesting-chemise) — was formerly the one commonly used for out-of-door work during harvest-time. Around the waist is a many colored knitted woollen ribbon and her head-gear is the one common to every unmarried woman, a sort of stock, wound over with a many-colored kerchief.

7. **Group of Dalecarlian peasants from the parish of Mora,** the population of which took a very prominent part in the war of independence of Gustavus Wasa in the beginning of the decade 1520—30.

The group is composed of an elderly man (a »mas»), a married woman and a »kulla» (young girl) all of them wearing the handsome holiday-costume of their parish. The man is dressed in a wadmål (homespun) frock-coat, breeches and shoes with tongues (»plösa») and a leather apron which is thoroughly characteristic of the Mora costume and is worn even for holiday use. On his lap he holds a

Dalecarlian clock, the manufacture of which has been carried on for a long time in Mora.

The head-gear is the most characteristic feature in the dress of the married woman; it is called a »hat», but shows a remarkable difference in color and shape to that of the young girl, which consists in a kerchief, fastened round the chin and replacing the »hat». The young girl is wandering about selling various products of domestic industry, amongst which hair-work takes a considerable part. According to Dalecarlian custom the married woman carries her child in a bag placed on her shoulders.

The figures were modelled by the Swedish sculptor C. A. Söderman, and were constructed by the armourer, F. Holmström. The faces and hands of the figures were painted by the artist G. Eriksson.

Hitherto the collections of the Museum have been kept in localities widely separated from each other and unfit to allow a satisfactory arrangement of the objects. A suitable building being highly desirable, already in 1876 a fund for erecting a Museum was instituted, though not before 1882, a building-ground at Lejonslätten being then given by H. R. M. the King of Sweden, could this question be seriously considered.

In 1883 a general international competition for building-plans was arranged, and the Professors M. Isæus and I. G. Clason having received an order for executing these plans, in 1888 the preparatory works could be commenced. The building-plans now approved represent a style that may be called Swedish renaissance, the details being taken from the Royal Castles of Gripsholm, Kalmar and Vadstena, a style well adapted to our climate and thoroughly suitable for this monumental purpose.

Prev. aw. Paris 1878.

440. Svenska Turistföreningen, *The Swedish Tourist Club*, Stockholm.

Agent in Chicago: Baron Nils Posse, 23 Irvington Street, Boston.

Exhibition arranged by the Club for illustrating Swedish nature and culture, the development of transportation, money system, typography, the press, system of decorative-orders, sport and athletics, etc.

The Club was founded in spring 1885, at the close of 1892 its members were about 6,200.

Co-operators:

The Gymnastic Society of Stockholm, The Gymnastic- and Fencing-Club of Stockholm, The Royal Swedish Sailing Club, The Swedish Snowskate Club, The General Skating-Club of Stockholm;

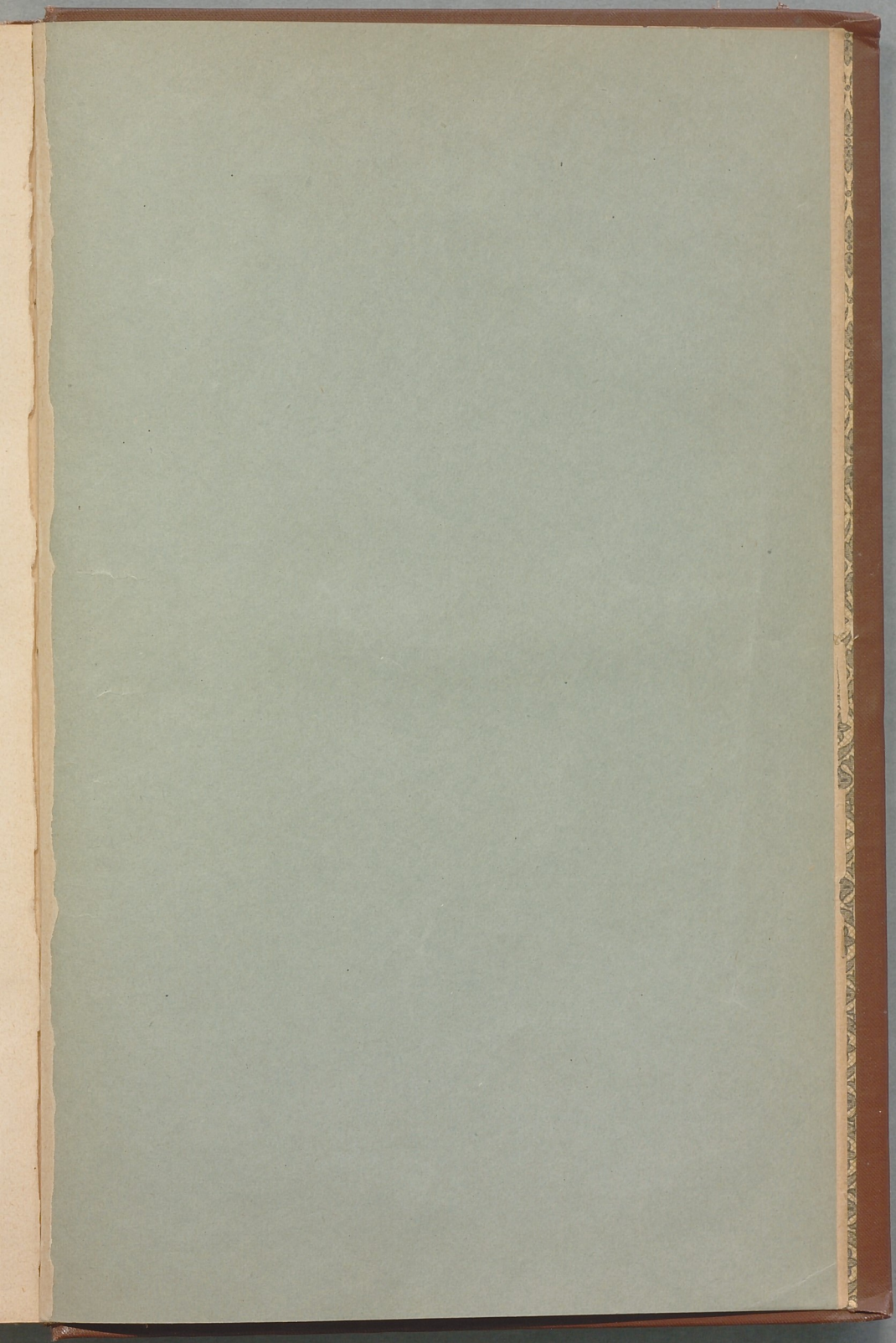
Artists: J. A. G. Andersson, V. Andrén, O. Arborelius, W. Behm, A. Beer, A. Borg, A. Gellerstedt, A. Genberg, T. Hermelin, J. Kindborg, C. Kjellin, J. Kulle, B. Liljefors, C. M. Lindström, E. Rosenberg, Sv. Rosman, Baroness E. Sparre, C. F. Svensson, J. Tirén, A. Törne;

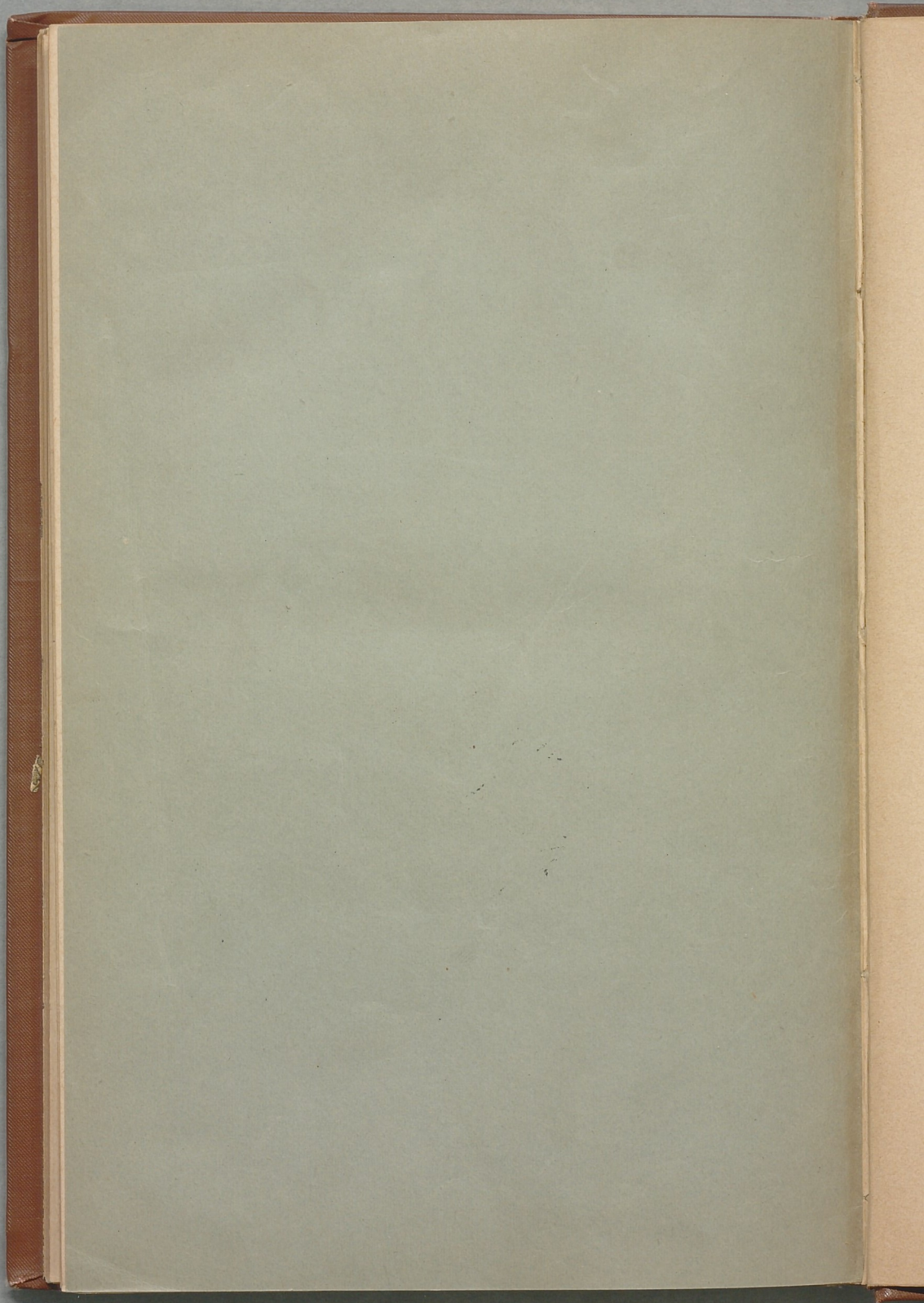
Photographers: C. G. Blomqvist, A. Jonason, A. Olson, O. Olsson, R. Sammland, Axel Sjöberg & Co., Wahlström & Widstrand;

Manufacturers of sport materials: E. G. Ekstrand, Helmer Langborg, B. & O. Liberg, N. P. Tull, N. Posse, Svaling & Co.;

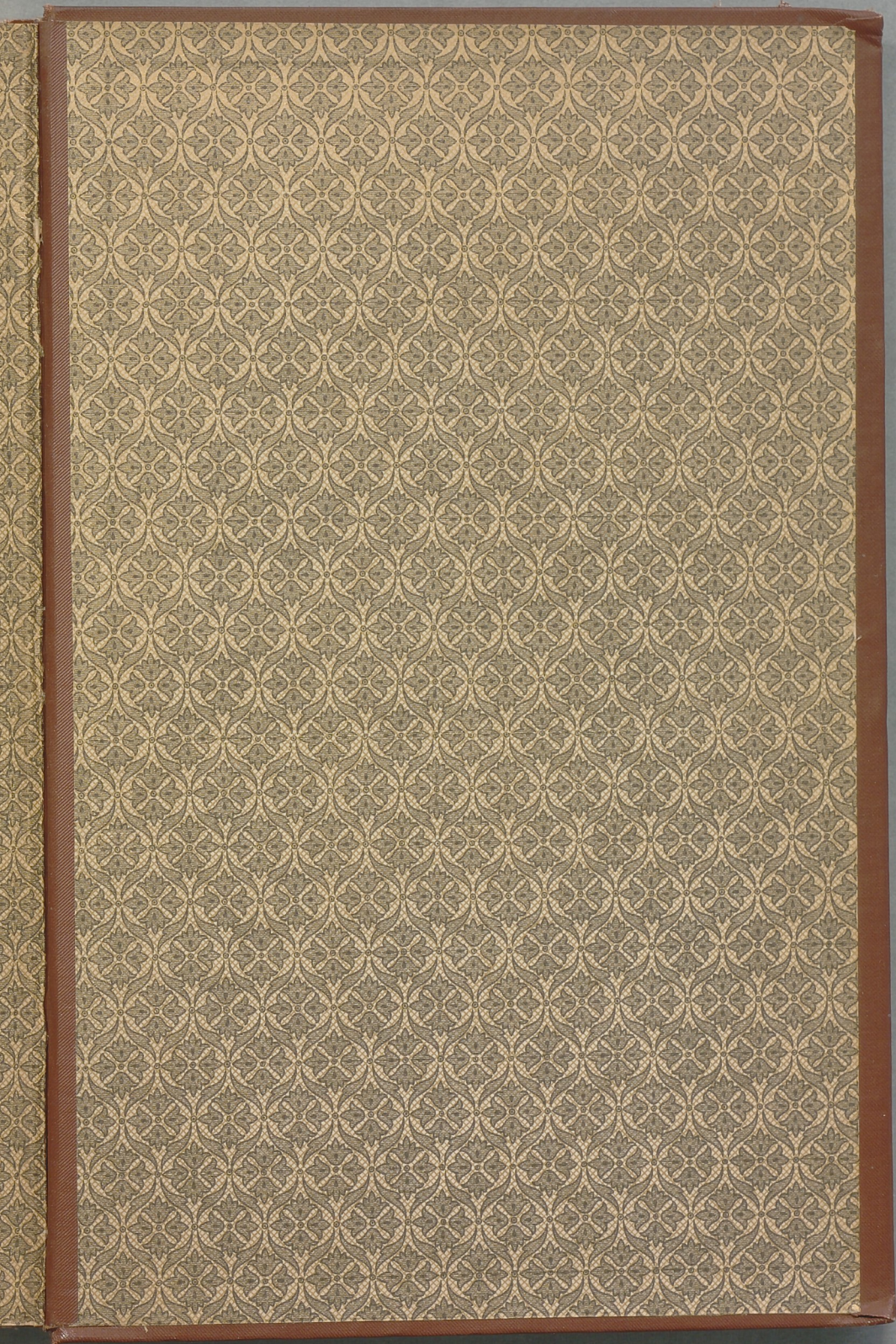
Jeweller: Carlman, C. F.

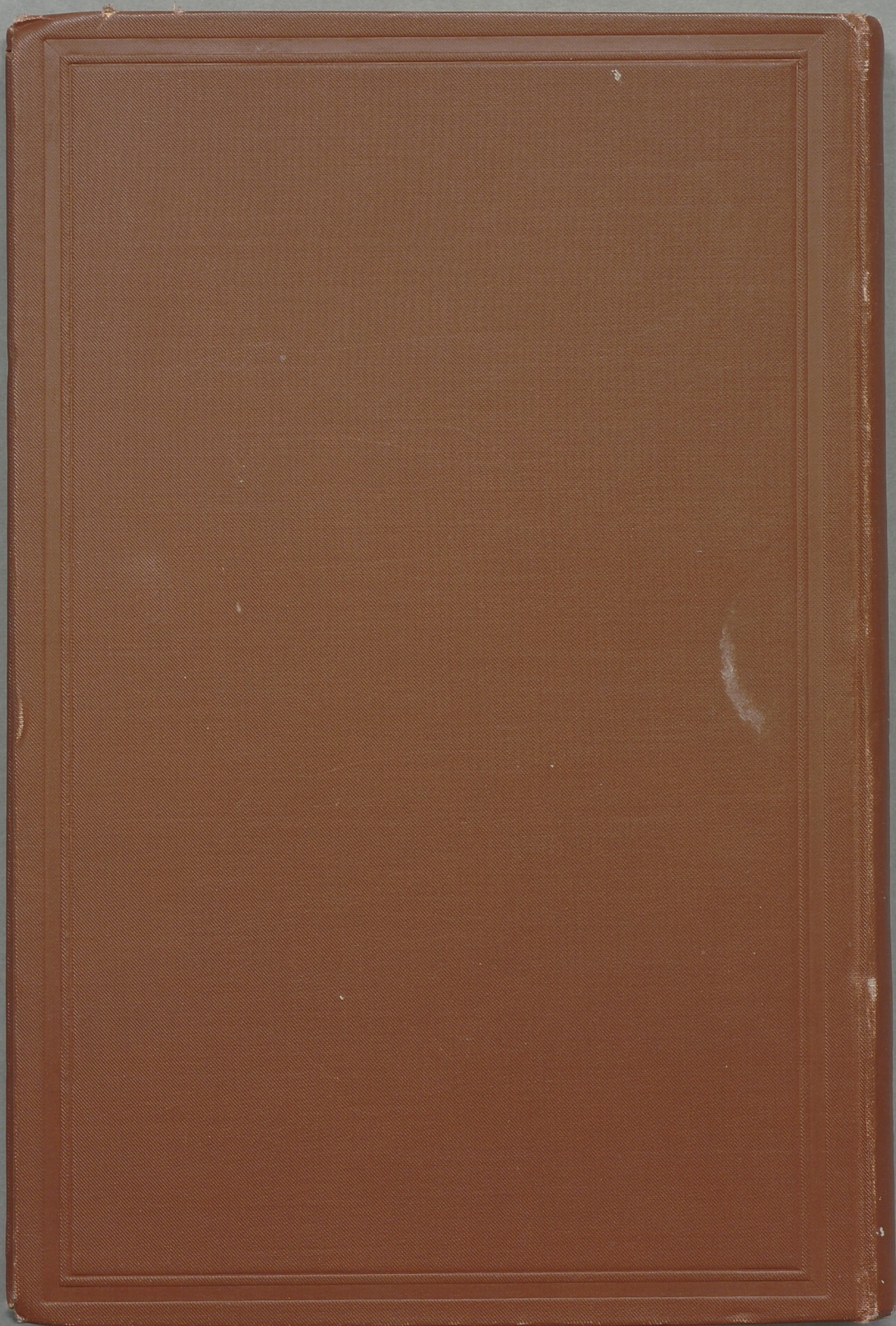
Prev. aw. Copenhagen 1888, Scheveningen 1892 Gold medal, Diploma of honor and Honorary medal of the Queen of Holland.











www.books2ebooks.eu