

UNITED SWEDISH SINGERS OF THE PACIFIC COAST. MUSICAL
FESTIVAL AND CONVENTION TACOMA, WASH. : SEATTLE,
WASH. :

**Souvenir program of the Sixth Bi-ennial
Musical Festival and Convention, held in
Tacoma and Seattle, Wash. by the United
Swedish Singers of the Pacific Coast, July
11th-15th, 1917 / issued by the Fest**

[S.l.] : The Committee
1917

EOD – Miljoner böcker bara en knapptryckning bort. I mer än 10 europeiska länder!



Tack för att du väljer EOD!

Europeiska bibliotek har miljontals böcker från 1400-till 1900-talet i sina samlingar. Alla dessa böcker går nu att få som e-böcker – de är bara ett musklick bort. Sök i katalogen från något av biblioteken i eBooks on Demand- nätverket (EOD) och beställ boken som e-bok – tillgängligt från hela världen, 24 timmar per dag och 7 dagar i veckan. Boken digitaliseras och blir tillgänglig för dig som e-bok.

EOD bokens fördelar!

- Få samma utseende och känsla som med originalet!
- Använd ditt standardprogram för att läsa boken på skärmen, zooma och navigera genom boken.
- Skriv ut enstaka sidor eller hela boken.
- *Sök:* Använd fulltextsökning för enskilda fraser.
- *Klipp & klistra:* Kopiera bilder och delar av texten till andra applikationer (t.ex. ordbehandlingsprogram).

Villkor för användning

Genom att använda EOD-tjänsten accepterar du de villkor som ställs av biblioteket som äger den aktuella boken.

- Villkoren på svenska: <http://books2ebooks.eu/odm/html/nls/sv/agb.html>

Fler e-böcker

Redan nu erbjuder 30 bibliotek från 12 europeiska länder denna service.

Mer information finns tillgängliga via <http://books2ebooks.eu> alla boken.

- <http://search.books2ebooks.eu/>

Souvenir-program.

So. Saml.
Mus.
(Pr.)
1917

SOUVENIR

1917

SONG ALBUM

TACOMA



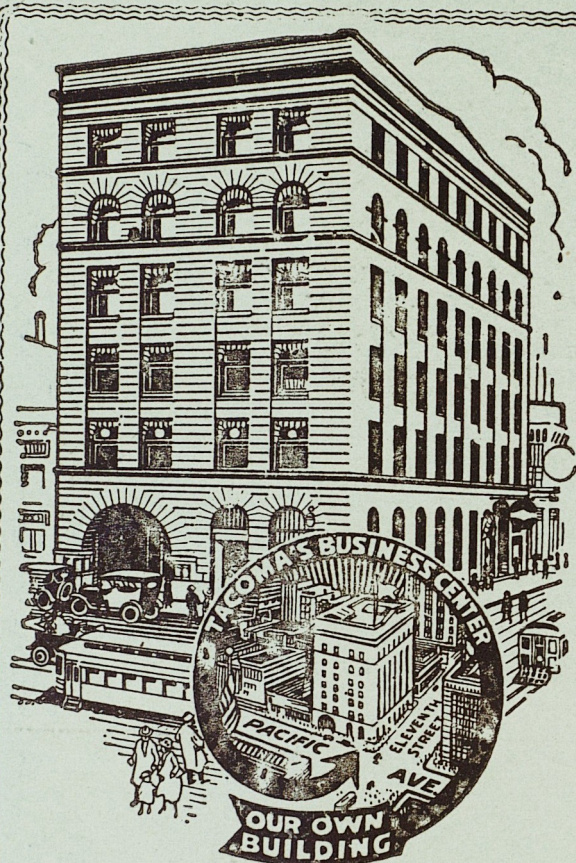
SINGING FESTIVAL AND CONVENTION

UNITED SWEDISH SINGERS

OF THE PACIFIC COAST

TACOMA

SEATTLE



YOU SHOULD DO BUSINESS WITH YOUR OWN PEOPLE.
THE

Scandinavian American Bank of Tacoma

We have entered upon the twelfth year of successful business in Tacoma.—More than Twelve Thousand satisfied customers.

Direct bank connections with the large banks in Sweden, Norway and Denmark

3 per cent. interest paid in savings deposits.

DIRECTORS

HON. ERNEST LISTER, Governor of the State of Washington.
JOHN EDWARD CHILBERG, President Scandinavian American Bank of Seattle.
GUSTAF LINDBERG, President Lindberg Grocery Company.

J. F. VISELL. J. F. Visell & Co., Merchants.
GEORGE G. WILLIAMSON, Williamson & Freeman, Attorneys-at-Law.
W. H. PRINGLE, Banker.



SOUVENIR PROGRAM

Of the Sixth Bi-ennial Musical Festival and
Convention

Held in Tacoma and Seattle, Wash.

By the

United Swedish Singers of the Pacific Coast

July 11th—15th, 1917

—o—

FESTIVAL PROGRAM

THURSDAY, JUNE 12th. First Grand Concert, Tacoma Stadium, at 8 P. M.

FRIDAY, JULY 13th. Second Grand Concert, Arena, Seattle, at 8 P. M.

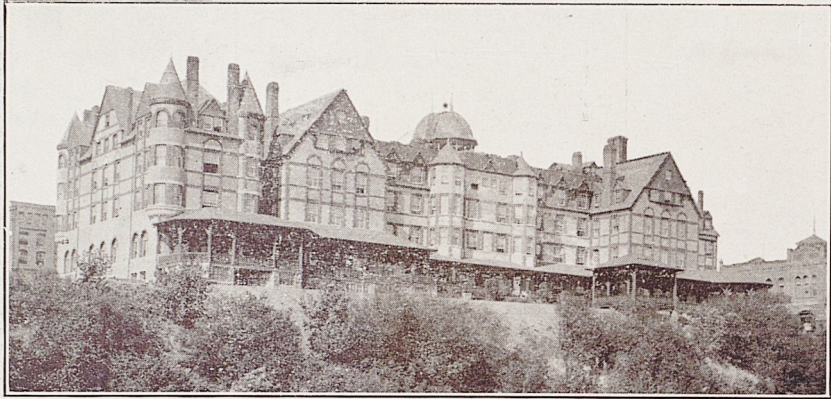
SATURDAY, JULY 14th. Convention at Valhalla Hall, 10 A. M. Singers' Banquet in Tacoma Hotel at 7 P. M.

Musical Director-in-Chief—Axel Pihlstrom, San Francisco.
Soloists—Mme Marie Sundelius, Soprano; John W. Jones, Basso.

Pianist—Mrs. T. V. Tyler

This Festival Album, issued by the Festival Committee,
compiled and edited by Gustaf Larson, president
U. S. S. of the Pacific Coast.





TACOMA HOTEL

*The Swedish Singers' of the Pacific Coast
Headquarters*

Compliments to the Singers

from

HEDBERG BROS.

SHOE DEALERS

FESTIVAL COMMITTEES.

Executive Committee

Gust Larson C. Hellstrom
A. T. Peterson J. Thuor
Gustaf Björklund O. Nordgren
 F. Forslund

Press Committee

P. Veborg Frank Ekberg
T. Sandegren Gustaf Larson
Rev.E.C.Bloomquist Almin Swanson
Gustave Pahrson Swan Samson
Emil Stenberg J. F. Visell

Finance Committee

Austin Peterson Emil Benson
 Carl Hellström

Reception Committee

J. Thuor C. Holmstrom
F. Forslund Austin Peterson
G. Björklund Gustaf Larson

Entertainment Committee

Carl Hellström Gustaf Salander
Gustaf Björklund And. Mejers
Edw. Dahlin J. Thuor
L. Landstrom F. Forslund
J. A. Benson O. Nordgren
 J. G. Lund

Banquet Committee

Rev.E.C.Bloomquist Edw. Dahlin
Dr. J. R. Brown O. F. Larson
Gustaf Lindberg Ch. Hedberg
T. Sandegren C. F. Erickson
C. O. Lynn, A. Christofferson
 J. Hedberg

SÅNGARHÄLSNING.

Sångare från västra kusten,
Som så talrikt samlats här
Med den rätta sångarlusten, —
Eder, som ha sången kär,
Ett välkommen vill jag bjuda,
Friskt må våra toner ljuda.

Friskt må våra toner klinga
Och med kraft till hvarje själ
Minnen från dess barndom bringa,
Så vi fylla målet väl,
Då vi söka här bevara
Nordisk sång, den underbara.

Ty hvar hälst vårt folk är bofast
Bör vår svenska sång förvisst
Odlas flitigt, väl och trofast
Utan vank och utan brist,
Tills vårt sångarnamn vi sprida
Öfver hela jorden vida.

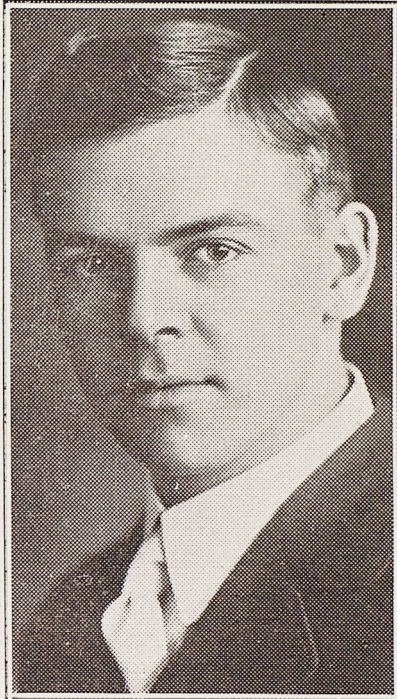
Många segrar sången vunnit
Uppå fredligt sångartåg.
Ljufligt vi det värftet funnit
Att med kraft och mod i håg
Uppå toners sköna bana
Lyfta högt vår sångarfana.

Därför, sångarbröder alla,
Låten känslan mäktig, stor,
Nu i våra toner svalla,
Medan glädjen hos oss bor.
Må de nya band, som knyts
Till de gamla, aldrig brytas!

G. L. OCH E. S.



GUSTAF LARSON



A. T. PETERSON

OFFICERS:

- Gustaf Larson, President, Tacoma
- R. Gedlund, 1st Vice-President, Seattle
- Alfred Nordgren, 2nd Vice-President, Los Angeles
- C. Appelgren, Secretary, Portland
- A. T. Peterson, Treasurer, Tacoma
- Axel Pihlstrom, Director-in-Chief, San Francisco





AXEL PIHLSTROM
Director-in-Chief



MME MARIE SUNDELIUS
Soprano

Mme. Sundelius sings

for the

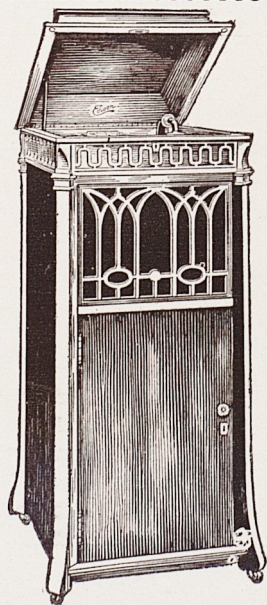
New Edison Diamond Disc

Hear her records at our store any time.

SHAW SUPPLY CO.

Tacoma's Largest and Finest Phonograph
Store

1015 PACIFIC AVENUE



First Grand Concert, the Stadium, Tacoma

Thursday July 12, 1917, at 8 P. M.

PROGRAM

1. Selection--
Tacoma Orchestra
 2. (a) Sångarlösen (Singers Greetings)Grieg
(b) Hör oss Svea (Hear us Svea).....Wennerberg
(c) Stridsbön (Battle Prayer)Lindblad
United Swedish Singers of the Pacific Coast
Axel Pihlstrom, Director
 3. Aria: Birdsong from PagliacciLeoncavallo
Marie Sundelius and Orchestra
 4. Vackra Sky (Beautiful Sky)Brolén
Swedish Male Chorus, Everett
Philip K. Hillstrom, Director
 5. (a) Norrland (The Northland)Stenhammar
(b) Olav TrygvasonReisiger
United Swedish Singers of the Pacific Coast
 6. Selection (Northland Melodies) Arr. by Axel Pihlstrom
Tacoma Orchestra
Axel Pihlstrom, Director
 7. Frihetssång (Song of Liberty).....Mucke
Columbia Male Chorus, Portland
Charles Swenson, Director
 8. (a) The Lark now leaves his watery nest.....Parker
(b) Zuni Indian's WooingTroyer
(c) Vallpigelät (The Shepherd Girl's Song)..Beckman
(d) Irmiline RosePeterson-Berger
(e) Tänker du jag förlorader är...Swedish Folksong
Marie Sundelius
Mrs. T. V. Tyler at the Piano
 9. (a) Stå stark (Stand Firm)Wennerberg
(b) Vårt Land (Our Native Land)Josephson
(c) Vandringsång (Rustic March)Korling
United Swedish Singers of the Pacific Coast
 10. Svearnes Marsch (March of Followers of Svea) Lind
Thule Male Chorus, Tacoma
H. P. Sather, Director
 11. My Old Kentucky HomeFoster
Marie Sundelius and the
United Swedish Singers of the Pacific Coast
 12. Landkjending (Landsighting)Grieg
Barytone Solo by John W. Jones
Grand Chorus and Orchestra
- STAR SPANGLED BANNER
United Swedish Singers of the Pacific Coast
Audience and Orchestra



SWEDISH SINGING SOCIETY, OF SAN FRANCISCO

Axel Pihlstrom, Director

SHORT HISTORY OF OUR ORGANIZATION

The United Swedish Singers of the Pacific Coast were organized in Portland, Oregon, during "Lewis & Clark" Exposition, July 28, 1915, by the following societies: Swedish Singing Club Columbia, Portland, with 20 members; Swedish Singing Society of San Francisco with 20 members; "Svea," Seattle, with 32, and "Svea," Everett, with 15. The new organization appeared and rendered several songs with credit on the Scandinavian Day at the Exposition, July 29. The first set of officers were: Emil Hogberg, San Francisco, President; Fritz Hult, Seattle, 1st Vice-President; G. L. Johnson, Everett, 2nd Vice-President; E. P. Valleen, Seattle, Financial Secretary; Lambert Gisslow, San Francisco, Festival Secretary; Conrad Gardelius, Treasurer, and Axel Pihlstrom, Director-in-Chief, all of San Francisco.

The next Singing Festival was held in San Francisco 1907, which was a great success, both artistically and financially, although the business section of the city still laid in ruins after the great conflagration of the year previous. At the Convention the following officers were elected: N. B. Nelson, Seattle, President; S. J. Zintnea, 1st Vice-President, Seattle; C. A. Appelgren, Portland, 2nd Vice-President; Lambert Gisslow, San Francisco, Corresponding Secretary; J. A. Swan, Festival Secretary; C. F. Wallin, Treasurer; H. P. Sather, Director-in-Chief, all of Seattle. A Singing Festival and Convention was held during the Exposition in Seattle 1909, and on the Swedish Day, July 31, the organization appeared and rendered the program in the evening, in the Natural Amphitheater, before an immense audience. A second concert was held in the Armory, August 2nd, and the third in Tacoma Theater, Tacoma, August 3rd.

Mme. Jenny Norelli was the prima donna at the festival in San Francisco and Mr. and Mme Oscar from the Royal Opera in Stockholm were the soloists at the Festival in Seattle and Tacoma. The participating societies of the organization at the Festival in Seattle were the following: "Svea," Seattle; "Orpheus," Everett; "Svea," Spokane; "Columbia," Portland; "Swedish Glee Club," Tacoma; "Swedish Singing Society" and "Lyran" San Francisco. At the Convention it was decided to hold the next Festival in Spokane 1911, and the following officers were elected: Max Anderson, President, Spokane; C. T. Peterson, San Francisco, 1st Vice-President; John Ecklund, Portland, 2nd Vice-President; J. A. Grythman, Secretary; Allen H. Nelson, Ass't Secretary; Felix von Mickwitz, Treasurer, and N. A. Krantz, Director-in-Chief, all of Spokane. On account of "hard times" etc., no Festival was held and so the matter stood until 1913, when the Swedish Singing Society decided to invite the members of the organization, as well as newly formed Singing Societies to a joint Festival in San Francisco 1915, during the Panama-Pacific International Exposition. At a meeting held in the fall of the same year by the Swedish Singing Society of San Francisco and the "Svea" in Oakland, the following officers were unanimously elected to carry out the arrangements: Emil Hogberg, President; C. T. Peterson, 1st Vice-President; John Thompson, 2nd Vice-President; Lambert Gisslow, Secretary; John Ludwig, Treasurer; Axel Pihlstrom, Director-in-Chief, all of San Francisco and Oakland. Later Alex. Olsson and Sven Svenson were elected Delegates-at-Large and Albert Brodie, "Columbia," of Portland, 3rd Vice-President; Karl E. Thorslund, "Svea," Seattle, 4th Vice-President, and Gustaf R. Larson, "Thule," Tacoma, 5th Vice-President.

At the Convention and Festival in San Francisco the following well

known Swedish-American artists appeared: Mme Marie Sundelius, Soprano, Boston, Mass.; Gustaf Holmquist, Basso, and Joel Mossberg, Baritone, Chicago. Tacoma was selected as the next convention city and the following officers elected for the term to summer of 1917: Gustaf R. Larson, President, Tacoma; C. A. Appelgren, Secretary, Portland; Austin T. Peterson, Treasurer, Tacoma; Axel Pihlstrom, Director-in-Chief, San Francisco; R. Gidlund, 1st Vice-President, Seattle; A. Nordgren, 2nd Vice-President, Los Angeles, Cal.

The committee in charge of the Festival and Convention in Tacoma has spared no efforts in making the affair a success artistically and financially. They have engaged Mme Marie Sundelius, of Boston, as the prima donna and have also engaged a baritone soloist and orchestra to make the Singing Festival properly artistic. To Rev. E. C. Bloomquist we give high praise for the splendid work he has done for the Singers in getting organizations interested with us in Tacoma. The First Concert to be held in the Stadium we expect to be the largest gathering before which the United Swedish Singers of the Pacific Coast ever appeared and the second Grand Concert to be held in the Arena, Seattle, will be equally high class and should draw a large audience.

To the Press and Tacoma organizations we extend our thanks for their hearty support.

Philip K Hillstrom

VOCAL INSTRUCTOR

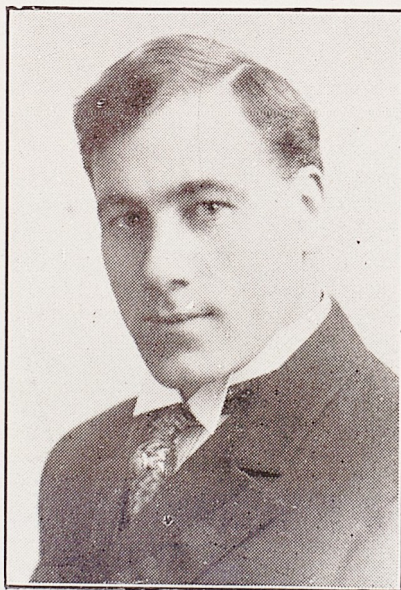
CHOIR DIRECTOR

SOLOIST

Available for Concerts and Song
Recitals

Fischer Studio Building
SEATTLE

Purcell Building
EVERETT

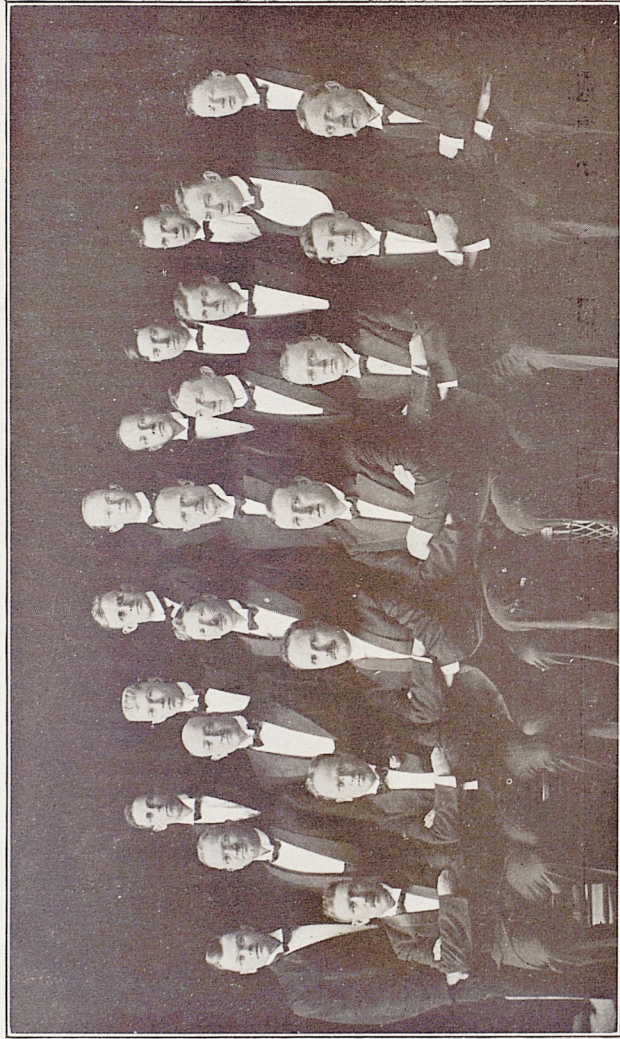


Second Grand Concert, the Arena, Seattle

Friday, July 13, 1917, 8:15 P. M.

PROGRAM

1. (a) Sångarlösen (Singers Greetings)Grieg
(b) Hör oss Svea (Hear Us Svea).....Wennerberg
(c) Stridsbön (Battle Prayer).....Lindblad
The United Swedish Singers of the Pacific Coast
Axel Pihlstrom, Director
2. Aria: Birdsong from Pagliacci.....Leoncavallo
Marie Sundelius
Mrs. T. V. Tyler, Piano
3. På Fjället i SolPetterson-Berger
Swedish Male Chorus, Spokane
N. A. Krantz, Director
4. Violin
(a) RomanzeJohan Svendsen
(b) HumoreskeTor Aulin
(c) Liebesfreud Kreisler
Mr. Claude Madden
Hattie Edenhalm, Accompanist
5. (a) Norrland (The Northland)Stenhammar
(b) EngelbrektsmarschSwedish folk melody
(c) Vårt Land (Our Native Land).....Josephson
The United Swedish Singers of the Pacific Coast
6. Frihetsång (Song of Liberty)Mucke
Columbia Male Chorus, Portland
Charles Swenson, Director
7. (a) The Lark now leaves his watery nest.....Parker
(b) Zuni Indian's WooingTroyer
(c) Vallpigelät (The Herdgirl's Song).....Beckman
(d) Irmiline RosePeterson-Berger
(e) Tänker du jag förlorader är.....Swedish Folksong
Marie Sundelius
Mrs. T. V. Tyler, Piano
8. I Naturens Sköte (In Nature's Fold).....Strauss
(Text by Carl Wieden. Arr. by H. P. Sather.)
Svea Male Choir, Seattle
H. P. Sather, Director
9. (a) Du gamla, du fria.....Swedish Folksong
(b) My Old Kentucky HomeFoster
Marie Sundelius and
The United Swedish Singers of the Pacific Coast
10. Piano—
(a) SolglitterHugo Alfvén
(b) Etude de Concert.....E. A. MacDowell
Hattie Edenia Edenhalm
11. (a) Stå Stark (Stand Firm).....Wennerberg
(b) Olav Trygvason (Sea Battle of Svolder) Reissiger
The United Swedish Singers of the Pacific Coast
STAR SPANGLED BANNER
The United Swedish Singers, Soloists
and the Audience



SVEA MALE CHOIR, SEATTLE

H. P. Sather, Director

Compliments to the Singers

S. T. LARSEN

Larsen's Pharmacy

1105 So. K St.

Have Your
DELIVERY BODIES

Built by
Acme Auto Body Co.

11th and Cushman Ave.
Tacoma

*Compliments
from*

H. HEDLUND

The Tailor
11th & K Sts.

Welcome
To the Singers
THE MEADOWMOOR
Tacoma Theatre Bldg.
*Pure Ice Cream, Candies
and Pastries*



ERNST SKARSTEDT
Musik- och Sångarvän
Nestorn i Svensk-Amerikanska
Publicistkåren
Hedrad
med "Litteris et Artibus"

Greetings to Singers and

Guests from

GUSTAF SALANDER

CASH GROCERY

Valhalla Bldg. 1216 So. K

LADIES' AUXILIARY

Mrs. A. W. Carlson, President
Mrs. C. Holmstrom, V.-President
Mrs. C. E. Ostlund, Treasurer
Miss Esther Rosén, Secretary
Miss Josephine Anderson
Mrs. E. Bertle
Miss Elvira Carlson
Miss Flora Israelson
Miss Mary Kraber
Miss Effie Lynn
Miss Minnie Lynn
Mrs. C. Nelson
Mrs. Elis Rundbeck
Mrs. T. Sandegren
Mrs. A. Seaburg
Mrs. J. Thuor
Miss Olson
Miss Peterson
Miss Grace Allison
Miss Hazel Carlson
Mrs. John Berghund
Mrs. Alfrid Sandell

SINGING SOCIETIES PARTICIPATING IN THE CONVENTION

HARMONY MALE CHORUS
Los Angeles, Cal.

SVEA MALE CHORUS
Oakland, Cal.

SWEDISH SINGING SOCIETY
San Francisco, Cal.

COLUMBIA SINGING SOCIETY
Portland, Ore.

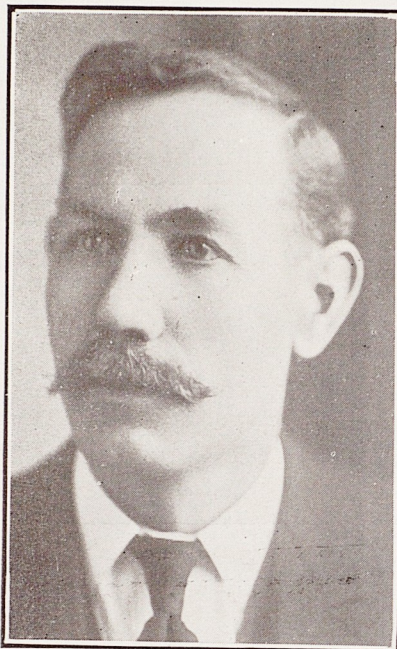
SCANDIA MALE CHORUS
Marshfield, Ore.

SVEA MALE CHORUS
Seattle, Wash.

SWEDISH MALE CHORUS
Everett, Wash.

SWEDISH MALE CHORUS
Spokane, Wash.

THULE MALE CHORUS
Tacoma, Wash.



FRANK EKBERG

Trusty Friend of the Singers
Member of the General Committee

Hearty Greetings to the
Singers

Pacific Stove & Stamping Co

Mfrs. of Stoves and Tinware

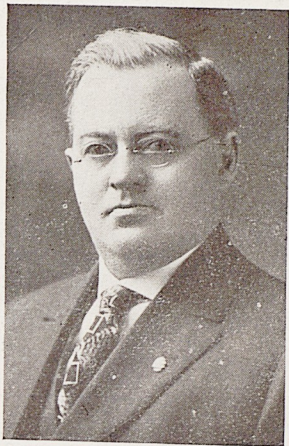
AUSTIN T. PETERSON
Secretary-Treasurer

Greetings

To the Singers

MODERN MFG. CO.

Benson & Olsen



J. W. JONES
Basso, Soloist



P. VEBORG
Chairman of the Press Committee



OLOF BULL
Pioneer Music Teacher of the
Northwest

GET

Your Clothes

from
HERBST

They are \$10 cheaper than else-
where.

Take Elevator

SAVE \$10

Herbst Clothes Shop

2nd Floor National Realty Bldg.
1117 Pacific Ave. Tacoma



Rev. E. C. Bloomquist and family

THERE IS A REASON

WHY

You always should buy your
butter from

A. E. Dahlin

Tacoma Butter Store

I Specialize

1118 Pacific Ave.

Tacoma

*"Better
Clothes
for
Men"*

Callson & Ahnquist

MERCHANT TAILORS

105 So. 10th St.

Tacoma

11th & K

11th & K

Economy Drug Co.

PRESCRIPTION SPECIALISTS

Eastman Kodaks & Photo Supplies

Developing & Printing

Nyal Family Medicines

Soda Fountain and Candy

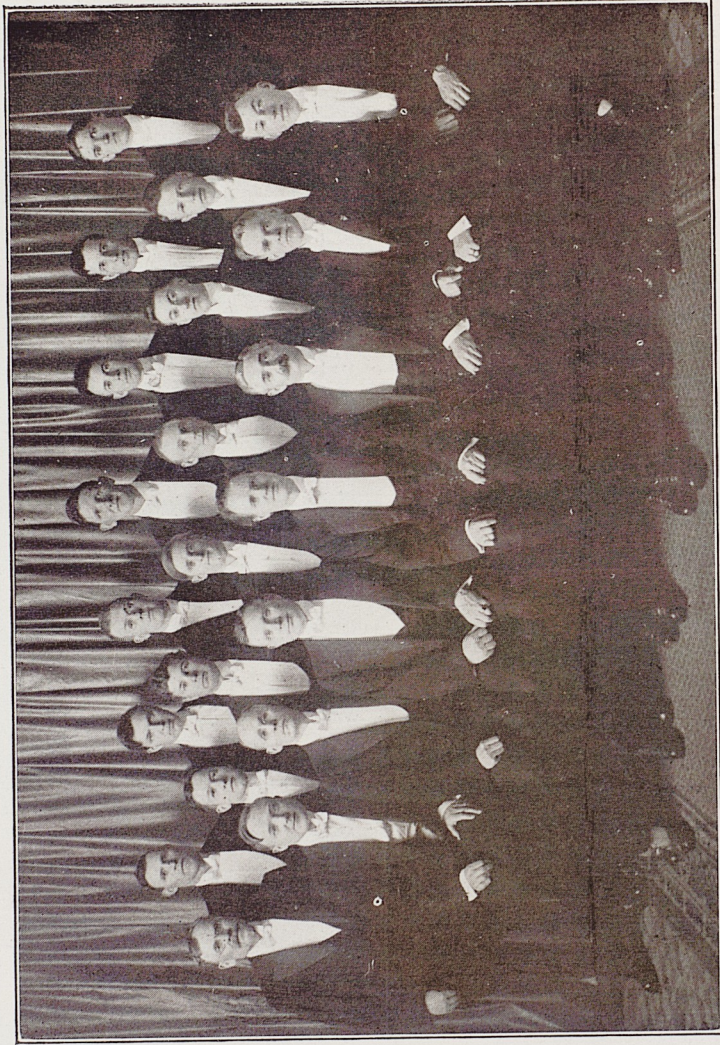
PHONE MAIN 351

Greetings to the Singers

Samuelson & Berg

Shoe Dealers

1110 So. K St.



COLUMBIA SINGING SOCIETY, PORTLAND
Charles Svenson, Director

Compliments
AARON LARSON
Groceries
1122 So. K Street

Welcome
To Our Swedish Singers
11th ST. QUICK LUNCH
1105 So. 11th St.
Good things to eat at popular
prices. Your patronage solicited.
J. G. LUND, Prop.

**THE POPULAR
DRY GOODS STORE**

"Oldest and Most Reliable
on the Hill"
W. S. MACKSOUD, Prop.
1114 So. K St.

COMPLIMENTS
to the Singers
from
J. A. BENSON
Swedish Bakery



Med hjärtligt välkommen til sångare och gäster
Redaktör och fru T. Sandegren



SCANDIA MALE CHORUS, MARSHFIELD, ORE.

Compliments to the Singers and Guests



MR. AND MRS. GUSTAF LINDBERG

Compliments

J. F. VISELL CO.

Swedish Bookstore

1114 Pacific Ave.

Lien's Pharmacy

Lien & Selvig, Proprietors

DRUGS, CHEMICALS AND
TOILET ARTICLES

PRESCRIPTION SPECIALISTS

Free Delivery

1102 Tacoma Avenue

Phone Main 7314 Tacoma, Wn.



THULE MALE CHORUS, TACOMA
H. P. Sather, Director

Compliments to the Singers

from

Dr. J. R. BROWN

Greetings to the Singers

from

PETERSON

The Photographer

Greetings to the Singers

from



GUSTAF BJÖRKLUND

Tailor

Compliments to the Singers

from

KARL ANDERSON

Sheet Metal Works

Compliments

GUSTAVE PAHRSON

1115 Commerce St.

California Building



VALHALLA TEMPLE

Headquarters of the Swedish Societies of Tacoma

Compliments to the Singers
from
P. VEBORG
Tacoma Jewelry Mfg. Co.

Compliments of
CASWELL OPTICAL CO.
9th and St. Helens Ave.

With Compliments to
Singers and Guests
CHAS. F. ERICKSON
General Contractor

LOU JOHNSON CO.
Leaders of Fashion in Wo-
mens Ready to Wear
940-942 Broadway
Tacoma

Compliments to the Singers
E. H. LINDBECK
Call Main 2550 for
Good Coffee.

Compliments of
ADOLF LUNDELL
.Soft Drinks
1308 Commerce Street

Compliments to the Singers
FRANK EKBERG
Notary Public
Fire Insurance

Compliments to the Singers
from
JOHNSON & ANDERSON
1104 So. K St.
Cigars, Tobaccos and Soft
Drinks



Greetings to the Singers

From

F. W. ERICKSON

Compliments to the Singers

From

MR. and MRS. M. MILLER

Compliments to the Swedish Singers

From

S V E A B A N D

P. O. Peterson, Director



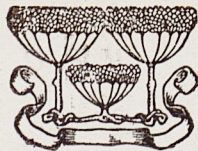
C. O. LYNN

Greetings to Singers and Guests

Compliments to the Singers

from

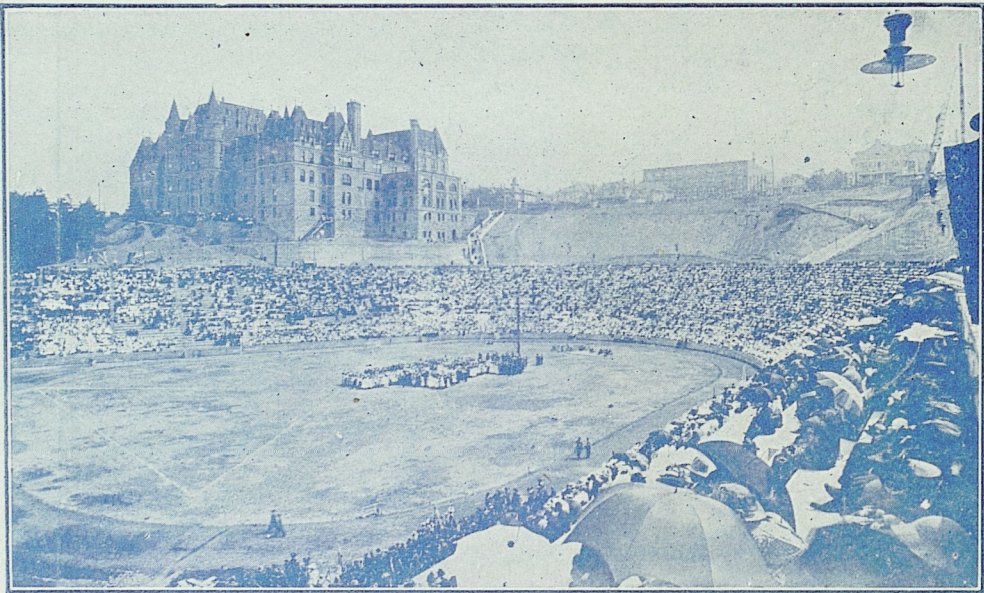
FIFE FLORAL CO.





SWEDISH MALE CHORUS, EVERETT, WASH.

Phillip K. Hillström, Director



Tacoma Stadium. Seating Capacity 35,000.

PUGET SOUND POSTEN PRINT

www.books2ebooks.eu