

FORSSMAN, O W A

**A guide for agriculturists and capitalists,
speculators miners & c... : With a map...**

Cape Town
1872

EOD – Miljoner böcker bara en knapptryckning bort. I mer än 10 europeiska länder!



Tack för att du väljer EOD!

Europeiska bibliotek har miljontals böcker från 1400-till 1900-talet i sina samlingar. Alla dessa böcker går nu att få som e-böcker – de är bara ett musklick bort. Sök i katalogen från något av biblioteken i eBooks on Demand- nätverket (EOD) och beställ boken som e-bok – tillgängligt från hela världen, 24 timmar per dag och 7 dagar i veckan. Boken digitaliseras och blir tillgänglig för dig som e-bok.

EOD bokens fördelar!

- Få samma utseende och känsla som med originalet!
- Använd ditt standardprogram för att läsa boken på skärmen, zooma och navigera genom boken.
- Skriv ut enstaka sidor eller hela boken.
- *Sök*: Använd fulltextsökning för enskilda fraser.
- *Klipp & klistra*: Kopiera bilder och delar av texten till andra applikationer (t.ex. ordbehandlingsprogram).

Villkor för användning

Genom att använda EOD-tjänsten accepterar du de villkor som ställs av biblioteket som äger den aktuella boken.

- Villkoren på svenska: <http://books2ebooks.eu/odm/html/nls/sv/agb.html>

Fler e-böcker

Redan nu erbjuder 30 bibliotek från 12 europeiska länder denna service.

Mer information finns tillgängliga via <http://books2ebooks.eu> alla boken.

- <http://search.books2ebooks.eu/>

*Till
Commander Captain Ruybro
med. H. G. G. G.*

*George
Apr.
(Br)*

*Wm
McDonneman*

A GUIDE

FOR

AGRICULTURISTS AND CAPITALISTS,
SPECULATORS MINERS, &c.,

WISHING TO INVEST MONEY PROFITABLY IN

THE TRANSVAAL REPUBLIC, SOUTH AFRICA,

CONTAINING A DESCRIPTION OF

A NUMBER OF FIRST-CLASS FARMS, SITUATED IN DIFFERENT
DISTRICTS OF THE REPUBLIC,

AND GENERAL USEFUL INFORMATION.

With a Map,

SHOWING THE GOLD STRATA AS IT IS SUPPOSED TO RUN FROM THE TATI TO
MARABASTAD, ALSO THE BAY OF LORENZO MARQUEZ, OR
DELAGOA BAY, & THE ADJACENT COUNTRIES.

COMPILED BY

O. W. A. FORSSMAN,

20 Years Resident in the Transvaal.

CAPE TOWN :

WILLIAM FOSTER & Co., PRINTERS, 36, ST. GEORGE'S-STREET.

1872.

*12
W 388*

Kungl. biblioteket



0 0000 000099642



A GUIDE

FOR

AGRICULTURISTS AND CAPITALISTS,

SPECULATORS MINERS, &c.,

WISHING TO INVEST MONEY PROFITABLY IN

THE TRANSVAAL REPUBLIC, SOUTH AFRICA,

CONTAINING A DESCRIPTION OF

A NUMBER OF FIRST-CLASS FARMS, SITUATED IN DIFFERENT
DISTRICTS OF THE REPUBLIC,

AND GENERAL USEFUL INFORMATION.

With a Map,

SHOWING THE GOLD STRATA AS IT IS SUPPOSED TO RUN FROM THE TATI TO
MARABASTAD, ALSO THE BAY OF LORENZO MARQUEZ, OR
DELAGOA BAY, & THE ADJACENT COUNTRIES.

COMPILED BY

O. W. A. FORSSMAN,

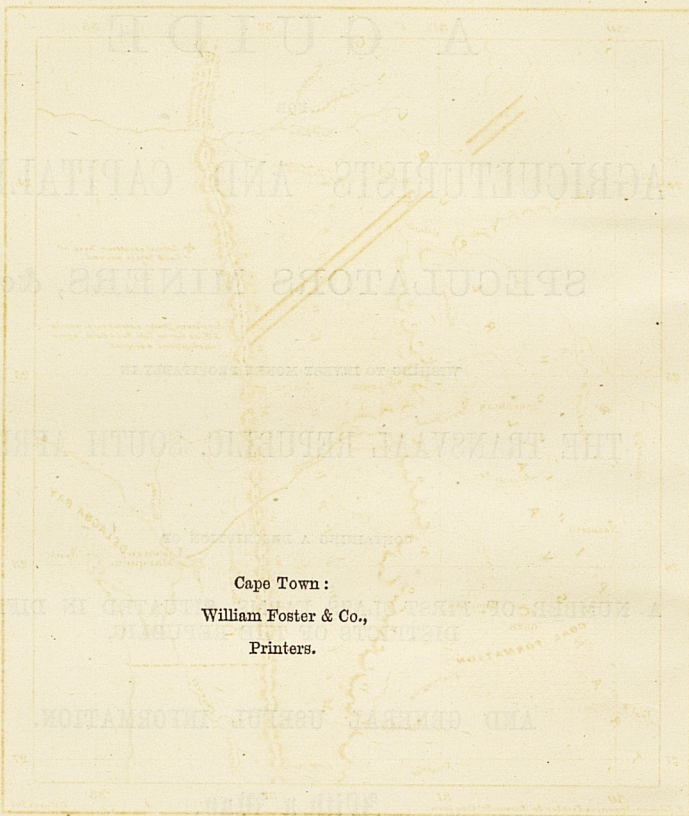
20 Years Resident in the Transvaal.

CAPE TOWN :

WILLIAM FOSTER & Co., PRINTERS, 36, ST. GEORGE'S-STREET.

1872.





Cape Town :

William Foster & Co.,

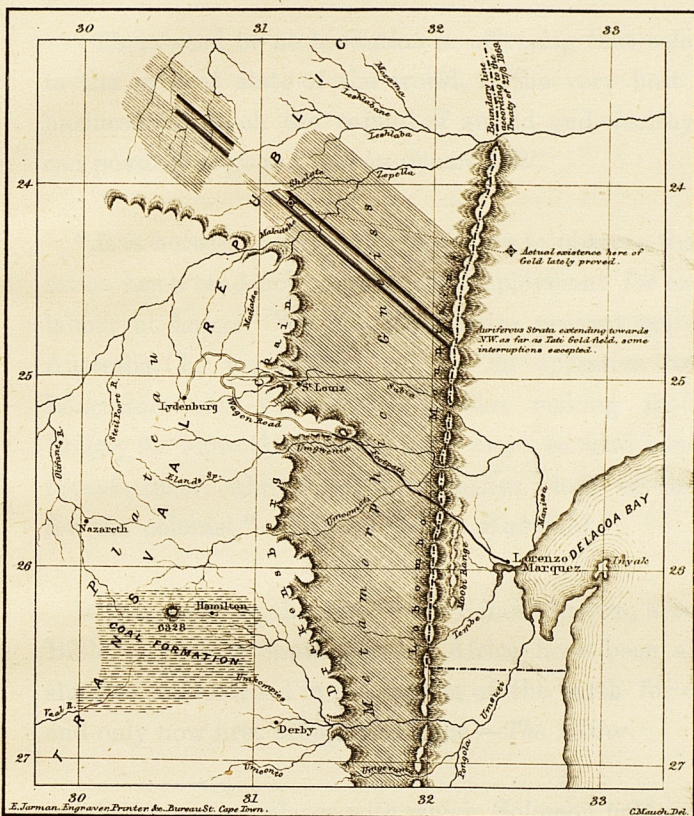
Printers.

O. W. A. FORSSMAN,

CAPE TOWN :

WILLIAM FOSTER & CO. PRINTERS, 22, GEORGE STREET.





REMARKS TO THE SKETCH.

The Bay of Lorenzo Marquez, or Delagoa Bay, will obviously become important. Coal and Gold Fields lay within easy distances from it; the auriferous strata of the latter extending as far as the Lobombo Mountains, and possibly somewhat further to the S.E., but interrupted by the volcanic range. Should the River Manissa prove navigable as far up as the sharp bend towards the S.W., the remaining distance by land would be comparatively trifling. Besides, the district of Leydenburg is well provided with other minerals, such as copper, iron, and very probably lead. The neighbourhood of the coast is not more unhealthy than that of Natal, and within two days an elevated tract of land near the Lobombo range may be reached. There are no mountain ranges to interfere with the construction of a railway over the well-wooded country, following the strike of the auriferous rocks towards the N.W., as far as the Tati Gold Fields, 370 English nautical miles distant in a straight line from Lorenzo Marquez.

(Signed) C. MAUCH.

Potchefstroom, February 10, 1871.

“There need be no hesitation in affirming that colonisation, in the present state of the world, is the very best affair of business in which the capital of an old and wealthy country can possibly engage.”—*John Stuart Mill*.

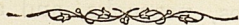
“It is necessary and very interesting to observe that colonisation has a tendency to increase employment for capital and labour at home. When a Hampshire peasant emigrates to Australia, he very likely enables an operative to live in Lancashire and Yorkshire. Besides making food in the Colony for himself, he makes some more to send home for the manufacturer, who in his turn makes cloth or implements for the colonist.”—*Edward Gibbon Wakefield*.

It is miraculous that the “vast riches” known, according to Bible, to exist in South Eastern Africa have been allowed to slumber undisturbed in the bosom of the earth for centuries, and only now first brought to light.—*The Editor*.

“Other remote places with which Solomon held intercourse were Ophir and Tarshish. From them were brought gold and silver, ivory, apes, peacocks, and algum wood.”—*Bible History*, page 208, by *Rev. Wm. G. Blaikie, A.M.*

“By the *Saxon*, Dr. Bleek, the Grey Librarian, has received a letter from the eminent German geographer Petermann, in which the writer states that he had received a communication from Herr Mauch, written in last September, at Zimbabwe, situated about 160 miles direct west from Sofala, and in lat. 20°14' S., and long. 31°48' E. (from Greenwich). Herr Mauch states that at Zimbabwe he found the ruins of a tower,

450 feet in diameter, its walls being 30 feet high, and 15 feet thick. The tower is constructed of granite, without mortar. Drawings made by Herr Mauch of the decorations are pronounced by Herr Petermann to be neither Arab nor Portuguese, and he believes them to be Phœnician. He is further of opinion that the place described by Herr Mauch is the site of the ancient Ophir. Alluvial gold is found in the neighbourhood, and more extensive ruins exist there also, but these latter had not been seen by Herr Mauch at the date he wrote, though he had heard of them from the natives. The present inhabitants of the country are the Makalaka, and they have only been here for about forty years."—*Cape Argus*, 21st *March*, 1872.



INTRODUCTION.

IN publishing this pamphlet, my principal object is undoubtedly to offer for sale to private persons or companies a choice lot of valuable landed properties situated in the different districts of the South African or the Transvaal Republic, but also to give strangers from far distant countries an opportunity, by reading the translations of public documents, Agricultural Societys reports, London brokers' and assayers' reports upon the Transvaal produce and minerals sent them as samples, and principally surveyors' reports upon the capabilities of farms surveyed by them,—to form an idea of their own of the vast resources of wealth this country possesses, which are only waiting for capital and a farming and mining population to be made available.

The want of information about the interior of the Transvaal, and a Land Agency Office where an intending settler could obtain reliable information as to where and how to invest his small or large capital to best advantage, has long been felt, and will no doubt shortly be supplied; but there being none yet, this little work may do the needful at present, and be the first guide.

Although we have a large mining population at the Diamond Fields, and will soon have a busy lot of gold miners at the various Gold Fields, these people do not allow themselves the time to stay and search for information when they pass through the country; and nothing in the way of inducement being offered them, they come and go, and we see them no more; but if they had only this little book for a few moments in their hands, they would surely pause and make inquiries, which I would be happy to answer, and the result is easy to conceive.

So much is certain, that during my long residence in the Transvaal, every visitor who perchance came here could not

help to exclaim, "This is certainly a beautiful and rich country, but the only drawbacks that you have are, no seaport and cash market near at hand, and expensive transport." And they were right in these remarks *at that time*, because our nearest market and seaport was Natal, being distant about 400 miles from the first entrance of the Republic and 800 miles from the farthest end; however, all these drawbacks are now fortunately removed. At our Western boundary we have an unlimited cash market, with a fine level road leading to it—the Diamond Fields—where all eatables and drinkables find a ready sale at high prices. At our Northern boundary we have the Tati Gold Fields and the whole interior of the South African cash market; and at our Eastern boundary we have the newly-discovered Zoutpansberg and Marabastad Gold Fields, with its near entrance from the ocean—the Portuguese seaport Delagoa Bay (see sketch on the front page). This now enables the Transvaal farmer and planter to grow with success all the different sorts of produce enumerated in the agricultural show list, both for local consumption and exportation. It also gives new life to mining enterprise, considering that the seaport Delagoa Bay is so near the mining districts of Zoutpansberg, Waterberg, Rustenburg, and Leydenburg.

It is no doubt known to many that during the year 1871 works commenced both from the Transvaal side in Leydenburg and the Portuguese side in Lorenzo Marquez (Delagoa Bay) to prepare the road between the Portuguese Colony and the Transvaal for wagon travelling and goods traffic, and that this proceeds satisfactory can be seen by extract from a letter addressed to me as under:—

Lorenzo Marquez, 4th January, 1872.

MY DEAR MR. FORSSMAN,—It is now two months since I commenced the construction of the road from here to our boundary. I have finished the first bridge over the River Enfulene, and a portion of road made of stone and lime over a marshy place one mile long.

I expect about the 15th of this month a vessel to arrive here, loaded with iron bars, cement, stone rollers, &c., for the road, and hope to go on with the road-making with all possible speed.

(Signed) ALBERTO DE PAIYA RAPOZO.

From the Transvaal side the old roads from Leydenbug to the Lobombo Mountains only need to be repaired, which is now being done, wherefore we may hope to see the traffic on this new road opened in a short time.

Looking eastwards, we find that English enterprise is up to the requirements, by the following advertisement of Messrs. Payne & Co., which I extract from the *Natal Mercury*, March 12, 1872, viz.:—"Messrs. Payne & Co. have forwarded to us the following circular: 'Zanzibar regular line of steamers, *viâ* Suez Canal.—Direct for Zanzibar, the splendid new steam ship *Abydos*, sailing from London 30th January. A steamer will be despatched every alternate month. Rates of freight and passage:—Weight of measurement, 80s. and 10 per cent. primage; chief cabin, 75 guineas. A small coasting steamer will be sent out shortly to run in connection with this line to Mozambique, *Delagoa Bay*, Natal, and the Cape colony. By this means telegrams will reach England, *viâ* Aden, in about 15 days, and passengers, *viâ* Brindisi, in about 30 days. For freight or passage, apply only to George H. Payne & Co., brokers to Cape and Natal Steam Navigation Company (Limited), 150 and 151, Fenchurch-street, London, E.C.'"

Under the head of Portuguese affairs, I give one valuable document, which may be worth while reading by mercantile men, viz., copy of tariff of custom-house duty in the provinces of Mozambique and Delagoa Bay.

When taking the map of the Transvaal into his hand, any one can at once perceive that the agricultural and mineral Transvaal Republic is situated just on the high road from the Diamond Fields to the Gold Fields, and it is the only country that can and shall have to supply both these Fields, with its thousands of busy people, with food, because the expensive carriage from the seaports debars competition from thence as long as ox-wagons are the only means of transport; and at a future time, when perhaps there shall be railways from the seaports to the Fields, then the Transvaal farmers shall have advanced so much in skilfulness of agriculture that they will be able to work with the modern agricultural implements and machines, and raise produce at cheaper rates than is the case now, and thereby even then keep out competition.

I now beg to draw the reader's attention to the instructions for the Surveyor-General of the South African Republic, Art. 8; and if he reads this he will observe that, according to the laws of this country, when a farm or a piece of land is laid down in a diagram, and passed through the Surveyor-General's and Executive Council's Office, it becomes an "*indisputable*" document for ever; but to have this done incurs a great deal of expense and trouble, wherefore a surveyed farm is so much more valuable—it gives the proprietor the required security of boundary and knowledge of its capabilities.

The following figures, which I take from the official balance sheet and estimates of income and expenditure of the Transvaal Republic during the official year, from 1st August, 1871, to 1st August, 1872, will show our state of affairs:—

During the above year the income or revenue			
was estimated to be	£40,988	10	0
The expenditure	35,714	5	0
			<hr/>
Leaving a balance in favour	5,274	5	0

The greater part of revenue is derived from quitrents, transfer dues on lands, and licences.

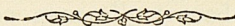
Our postal communications with all parts of the world are all that can be desired. Up to last month we received our European letters, *via* Cape Town, in 12 days, which would make on an average 42 days from London to Potchefstroom. This was by the Free State route, *but* since the new postal convention between the Cape Colony and the Transvaal came in force, which was on the 4th March, 1872, by which the Transvaal mail goes by the Klipdrift route, there will be a saving of at least 3 days, so that letters from England can reach Potchefstroom in about 39 days, and *vice versa*.

At the time of our last Agricultural Show, in 1868, we received a communication through the Consul-General for the Transvaal, J. J. Pratt, Esq., in London, for account of different Agricultural or Farmers' Clubs in England, in which several questions were put to us, as a public body, to be officially



answered, and a copy of this document will also be found in this little book, which may be worth while reading. However, it must be observed that at that time the existence of gold at Tati was only to some degree known, but no one had any idea of rich Diamond Fields existing on our Western boundary, which now considerably changes everything. If, therefore, these questions had to be answered now, the answer would in many instances be very different, particularly in regard to carriage, wages, prices of cattle, horses, &c., &c.

There is an almanac published in the Transvaal by Mr. F. Jeppe, in which can be seen distances from all seaports, including Delagoa Bay to both Gold and Diamond Fields, postal routes to and from the Republic, &c., and this being a very complete document, I would recommend any one in search of information about the Transvaal to provide himself with it.



CIRCULAR.

In consequence of a communication directed to F. Jeppe, Esq., Postmaster-General of the South African Republic (Transvaal), by J. J. Pratt, Esq., Consul-General for the said Republic, and dated London, conveying certain queries relative to this Republic, and which have been submitted by the former gentleman for answer to the Committee of the Transvaal Agricultural Society, a meeting of some of the members of the said Committee, constituted as follows, was held at the *Argus* news-room on Monday evening, the 20th April, 1868 :—

COMMITTEE OF THE TRANSVAAL AGRICULTURAL SOCIETY.

His Honour M. W. PRETORIUS, President.
A. FORSSMAN, Esq., Merchant, Vice-President.
F. W. REID, Esq., Merchant, Treasurer.
H. C. BERGSMAN, Esq., Public Prosecutor,
T. MELVILL DU TOIT, Esq., Commission Agent, } Honorary Secretaries.

MEMBERS.

Dr. W. J. OTTO, Magistrate.*
Dr. B. POORTMAN.
Rev. J. LUDOLF.
A. I. MUNNICH, Esq., Solicitor.
A. F. SCHUBART, Esq., Merchant.
H. C. W. VERMAAS, Esq., Agriculturist.*
E. J. A. GRIMBEEK, Esq., Agriculturist.*
MAGNUS FORSSMAN, Esq., Surveyor-General.
W. J. HILL, Esq., Accountant.
J. H. ROSELT, Esq., Editor *Transvaal Argus*.
F. WOLMARANS, Esq., Agriculturist.*
D. J. COETZEE, Esq., Agriculturist and Field-cornet, Marico.*
Herr CARL MAUCH, Honorary Member, Naturalist.

The said queries having been discussed *seriatim*, the sub-joined replies were resolved upon; and if healthy climate, rich soil, richness of minerals, cheap land, and provisions are inducements to emigrants, we are of opinion this country will be found second to none. The Agricultural Shows and

* These Members were unavoidably absent from the Meeting.

Exhibitions that have been held at Potchefstroom have fully proved the great variety of articles the Transvaal Republic is capable of producing, and which, under ordinary circumstances, will make this a rich and flourishing country. With its capabilities for the growth of coffee and sugar, coupled with the recent discovery of extensive Gold Fields in its vicinity, few countries, if any, possess such bright prospects as this Republic, or offer better results to the farmer; for, should a large influx of population set in for the Gold Fields, as we have every reason to believe will be the case, the necessary supplies produced by farmers must be drawn from this State, in consequence of its contiguity to those Gold Fields.

The Committee of the Transvaal Agricultural Society at Potchefstroom, South African Republic, will be ready at any time to supply such further information relative to this Republic as may be required, on application to either of the Secretaries.

QUERY No. 1, A.

1. Price of sheep? From seven shillings and sixpence to ten shillings each, British coin.
2. Sort of sheep? Chiefly merinos.
3. What is the average increase? From fifty to seventy-five per cent.
4. Is sheep-farming carried on in the same manner as in Australia? No; flocks are not near so large, nor by any means so well attended to, chiefly because in Australia white men are employed as shepherds.
5. Is the scab troublesome? No; when a flock of sheep is affected, it may be generally traced to inattention on the part of the farmer.
6. Are the flies troublesome? No; not more so than in the Free State or Cape Colony.
7. Will the country support sheep the year round? Yes with ordinary care.
8. Will Government lease land? on what terms? and for how long? Hitherto no applications have been made to Government to obtain the land on lease; but land may be procured either from the Government or private holders on reasonable terms.
9. What is the chief drawback to sheep-farming? The foot-rot known here by the name of "klaauwziekte," "tympanite" or "gylziekte," and "blue tongue." A change of pasture and on the same farm prevents "tympanite," which arises from superabundant pasture.

10. What is the rate of wages for white and black servants? Black servants 5s. per month, which are often paid in beads and brass wire at five shillings per pound, or young heifers at three pounds for 12 months' wages, together with food, consisting of Indian corn, which cost here about 6s. per 100 lbs., and which may be grown on any farm. White servants are not obtainable.

11. Cost of carriage from capital of Republic to nearest shipping port? Carriage from the capital of Potchefstroom to the nearest seaport town of D'Urban (Natal) is £10 per ton, and from D'Urban to Potchefstroom £20 per ton.

12. What is the distance? Three hundred and seventy-two miles.

13. Is there much poison grass? Yes, in some places; but the danger arising from this cause may in great measure be avoided by using ordinary care.

14. Is the country well timbered? Yes, particularly in the districts of Wakkerstroom and Utrecht, also to the north of the Magaliesberg and Drakensberg Mountains, and from the 25th degree of South latitude.

15. Cost of draught oxen at nearest port, also in the Republic? In Natal, from £5 to £6; in the Transvaal, from £6 to £8, payable in Transvaal Government notes; but for British coin they may be obtained at 50 per cent. less.

16. Cost of horses? Average price from £10 to £20.

17. Are the natives troublesome? We at present have war at Zoutpansberg, distant about 400 miles from the capital, and north of it; but with good treatment the natives are obedient and peaceable.

18. What coinage is used? British currency and the Transvaal Government notes. The former is at present at a premium of 50 per cent.

19. Is coffee-planting considered lucrative? Coffee-planting is still in its infancy, but it ought to be lucrative, considering that coffee thrives and yields well, and that there is a large demand for this article both here and in the neighbouring States.

20. Is sugar? The same answer that has been given for coffee, will also apply to sugar. The native sugar-cane grows very luxuriantly.

21. Are there regular trading vessels to nearest port? Yes, between England and Natal bi-monthly steam communication exists, as also the following lines of sailing vessels, viz., the "Aberdeen Clipper" and "White Cross" line of packets, as well as other regular traders.

22. Cost of freight to and from England? From England, by sailing vessels, 40s. per ton; by steamers, 120s. See London Shipping Circulars.

23. Why do you recommend the Republic in preference to Natal, where they give away land? The Transvaal is the granary of the interior, and supplies the Cape Colony with cattle. Besides these advantages, many farms are capable of producing all kinds of tropical products, such as coffee, sugar, and rice; it possesses mineral wealth, lead and coal are very abundant. (See prize list of the Agricultural Exhibition with regard to the manifold productions of the country, and for which prizes were awarded.) Taxation on land is at present 30s. to 60s. per farm of 6,000 acres. Climate eminently salubrious. The Transvaal, with its present small population, has for many years been able to send to the adjoining Orange River Free State Territory, with 25,000 inhabitants, sufficient grain for their supply. It also exports grain to Natal, and even some parts of the Cape Colony. The Transvaal has land and water sufficient to produce any quantity of grain, and possesses this particular advantage, that in many parts you can grow on the same farm wheat and other cereals, besides tropical products, and breed horned cattle.

24. Does the country resemble the Cape Colony? In some parts it does, but may be considered superior in being free from those periodical droughts, to which the Cape Colony is subject.

QUERY No. 2, B.

Is there any pamphlet or other document of a reliable character, describing the nature of the country, and the experience of those who have tried settling in it, as to fertility of soil, healthiness, temperature, produce of stock, prices of necessaries and of land, also about Government, and how far it is exposed to hostile inroads, the religion and educational means, language, prevailing insects, reptiles, wild beasts, &c.?

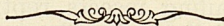
There is no pamphlet on the Transvaal published in the English language, with exception of a series of observations published in the *Transvaal Argus*, of which extracts have been made by the Consul-General for the Transvaal in England. At present there is a pamphlet passing through the press in Germany, accompanied by a map of the country, describing the capabilities of each district in the Transvaal, and which has been compiled by Fred. Jeppe, Esq., Post-

master-General, and published under the supervision of Dr. Petermann, of Gotha.

QUERY No. 3, C.

Recent and reliable information of geography, climate, soil, productions, animal and vegetable, &c., &c.? What inducements to emigrants? What is the most healthy district for stock, &c. &c.? What do sheep shear each, and what market for barren ones? The average rainfall, &c., &c.?

See the pamphlet already mentioned, as also report of Herr Carl Mauch, the African traveller and explorer. As an inducement to emigrants it may be stated that land which at present is cheap is rapidly increasing in value, its varied capabilities being a strong inducement to purchasers. **FARMING.**—Less capital is required here than what would be necessary in Natal or the Cape Colony. **PROVISIONS.**—Beef per lb., 3d., Mutton, 5d., Pork, 9d., Flour, per 200 lbs., 30s. **STOCK.**—The district of Wakkerstroom for horses, sheep and cattle. Bloemhof for sheep and cattle. Other parts of the Transvaal suitable to agricultural pursuits, and for the breeding of cattle. **SHEEP**, as a rule, are shorn twice in about 15 months, and average at each shearing from one and a half to two pounds of wool. No scientific observations have been as yet kept relative to the rainfall. The rainy season commences in September, and lasts till April, during which months a plentiful supply of rain falls. From May to October we have little or no rain, and these are our winter months. The elevation above the level of the sea of the highest ground in the Transvaal, namely, the Witwater's Rand, is 7,000 feet.



INSTRUCTIONS FOR THE SURVEYOR-GENERAL

OF THE SOUTH AFRICAN REPUBLIC,

APPROVED AND FINALLY SETTLED ACCORDING TO RESOLUTION OF VOLKSRAAD
DATED 13TH MAY, 1870—ARTICLES 88, 94, & 96.

Art. 1. That there exist a Surveyor-General and as many Government Surveyors as shall have been appointed by His Honor the State President.

Art. 2. The Surveyor-General is responsible to His Honor the State President, and receives his orders from him.

Art. 3. The Surveyor-General is charged with all works concerning surveying and diagrams, and the Government Surveyors are bound to obey orders from the Surveyor-General.

Art. 4. The Surveyor-General is charged to control all inspection reports delivered to the Executive Council, and if there are any remarks about them to be made, to report such to the above Council.

Art. 5. When the Government shall have delivered the required instruments to the Surveyor-General's office for the purpose of testing measures and weights, then the Surveyor-General shall be the person to have charge of the lawful measures and weights of this State, and may, alone with the sanction of the State President, admit any other person to them.

Art. 6. The Surveyor-General shall every year, in the month of February, make his report concerning all combined surveying.

Art. 7. The Surveyor-General, as well as the Government Surveyors, shall give a security of £500 for each of them. This to be approved by His Honor the State President, and sworn in according to law.

Art. 8. Whenever a farm or a piece of land is surveyed by a Government Surveyor, he shall make a diagram of such survey, and deliver the same, accompanied by two copies, to

the Surveyor-General. The Surveyor-General has to check the diagrams, and if found correct he is to sign his approval on the diagrams, and keep one copy in his office; the remaining two diagrams he is to send in to the Executive Council, so as to have the survey published in the *Government Gazette*. These diagrams may then be inspected either in the office of the Executive Council or the Surveyor-General. If no protest shall have been made against the survey within three months after the publication from the office of the Executive Council, then the State President shall sign the diagram as valid, after which it becomes an "*indisputable*" document. One copy of the diagram belongs to the owner of such farm or land, one to the office of the Surveyor-General, and one to the office of the Registrar of Deeds. The expenses of certificate of approval by the Surveyor-General shall be paid by the owner of the farm or land to the Government Surveyor who surveyed the land, he being responsible for the same to the Surveyor-General. The diagrams of farms formerly surveyed shall also be considered as "*indisputable*" documents if no protest has been made against them within three months after the publication of this law. In case of protest against any diagram, then the same rules shall be followed as are enacted in regard to protests against inspected farms. The Surveyor-General shall observe that the diagrams are in accordance with the resolutions of the judicial power, which are finally conclusive. It is the duty of the Surveyor-General to describe all subdivisions of farms on the original diagram, as well as on those of the owner, and the diagrams placed in the hands of the Government, for which he shall be paid according to tariff for Surveyors.

Art. 9. All survey of lands must be made in Rynland's measure, and the diagrams be calculated in morgen, square roods, &c. Any diagram not calculated in Rynland's measure may not be passed. Any diagram which, according to Article 217, in the fundamental law, cannot be considered as lawful, shall not be passed by the Surveyor-General.

Art. 10. The Surveyor-General has orders to make such regulations that those from time to time delivered surveyor's diagrams may be a guide, and point out the divisional lines between the districts, wards, and farms, as also the situations and nature of the farms. On the diagrams must be marked the distance of the surveyed farm from nearest town or known place. In case the survey consists of only one part of one farm, or several parts from two or more farms, which part or parts is intended to make out one farm under a new

name, then shall the names of adjoining farms be marked, so that the Surveyor's diagram may serve as necessary information.

Tariff for the Surveyor-General.

Art. 12. For the checking of a diagram to approve or disapprove of the calculation of size, corners, sides, &c., delivered to the Surveyor-General:—

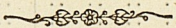
For every diagram having 3 corners	£0 15 0
Do. do. 4 do.	1 0 0
Do. do. 5 do.	1 5 0
For any diagram having more than 5 corners, the following charge is made, viz.: For the first 5 corners, £1 5s., and for every corner above this, 2s. 6d.	
For every certificate signed on a diagram.....	0 2 6
For other certificate	0 1 6
For copy of a diagram	2 2 0
For reference to any diagram in any case.....	0 2 6
For checking any diagram, comprising two or more farms or pieces of land with divisional boundaries and calculations, the charge will be the same as for each farm, if it had been represented on one separate diagram.	
If one diagram represents more than 8,000 morgen, and is not divided into farms, then shall the charge for checking the same be advanced to for every 1,000 morgen	0 2 6
For careful checking of plans and inspecting reports of documents of a land inspection commission, for every farm or piece of land	0 1 6

(Signed) M. W. PRETORIUS, State President.

By order,

B. C. E. PROES, Government Secretary.

Government Office, Pretoria, 23rd June, 1870.



Tariff of Duty in the Custom House in Delagoa Bay and other Portuguese East African Colonies.

ARTICLES.	Unities.	Duties in Reis.	Duties in £ s. d.
Brandy	Decalitre.	450	0 2 0
Calico	Kilo.	130	0 0 7
Do., from India	"	90	0 0 5½
Do., scarified	"	150	0 0 7½
Do., of Carvi and Cadi (Indian names)	"	60	0 0 3½
Do., white	"	170	0 0 8½
Do., stamped (ordinary)	"	220	0 1 0
Do., do., (fine)	"	320	0 1 5
Do., printed, in piece (ordinary Zuartes)	"	230	0 1 1
Do., do., do. (Zuarte from India)	"	130	0 0 7
Do., do., do. (Cadi)	"	80	0 0 4½
Do., do., do. (blue Calico)	"	180	0 0 9½
Do., do., by twist (ordinary)	"	180	0 0 9½
Do., do., do. (fine)	"	240	0 1 1½
Do., do., do. (scarified)	"	260	0 1 2½
Do., do., do. (Goods from Caxe)	"	180	0 0 9½
Do., do. (Travatas)	"	40	0 0 2½
Do., do. (Carlanganis)	"	110	0 0 6
Live Animals, of all kinds	Livre.	Free.
Sugar (Crystallized)	"	30	0 0 1½
Do. (not Crystallized)	"	20	0 0 1
Large Beads	"	30	0 0 1½
Sweet Oil, and others to eat	Decalitre.	200	0 0 11
Distilled Drinks—as Cognac, Gin, Liqueurs, Whiskey, &c.	"	600	0 2 8
Fermented Drinks—Beer, Cider, Lydromes, &c.	"	200	0 0 11
Tar or Bitumen	Livre.	Free.
Linen Cables	Kilo.	20	0 0 1
Lime	Livre.	Free.
Tin or Pewter	"	60	0 0 3½
Masonry for construction of Buildings	Livre.	Free.
Coal	Livre.	Free.
Casks and Staves, Head Pieces and Hoops	Livre.	Free.
Kafir Picks, from Bega	Kilo.	20	0 0 1
Tea	"	150	0 0 7½
Lead or Zinc	"	10	0 0 0½
Shot	"	20	0 0 1
Old Copper, in Plates and Bars	"	30	0 0 1½
Copper, from China	"	170	0 0 9
Portuguese Money, in Gold	Livre.	Free.
Foreign Money, in Gold and Silver, from Portuguese Harbours	"	"
Portuguese Money, in Silver or Copper, from Foreign Harbours	"	"
Vessels in any state or usage	3 p. cent. ad valorem.	not allowed.
Do. moved by steamer	Livre.	Free.
Common Guns	One.	480	0 2 2
Flour	Livre.	Free.
Iron, in Bars, Plates, or Sheets	Kilo.	10	0 0 0½
Iron, in Nails of all kinds	"	20	0 0 1
Iron, in Implements and Instruments for Arts	"	Livre.	Free.
Ice	"	"
Guano and other Manure	"	"
All sorts of Pulses	"	"

ARTICLES.	Unities.	Duties in Reis.	Duties in £ s. d.
Books, in any language, Printed Music, Letters, and Geographical Maps..	Livre.	Free.
Machines and Implements for Industry and Agriculture	"	"
Wood for construction of Vessels	½ p. cent. ad	valorem.
Butter, from Europe	Kilo.	120	0 0 6½
Do., from India	"	40	0 0 2½
Treacle	Decalitre.	450	0 2 0
Beads	Kilo.	40	0 0 2½
Mungas and False Coral	"	120	0 0 6½
Linseed Oil	"	30	0 0 1½
Cannons		not allowed.
Pearls, Diamonds, and other Precious Stones..	½ p. cent. ad	valorem.
Powder	Kilo.	50	0 0 3
Typographic Presses and Types..	Livre.	Free.
Salt..	"	"
Sacks or Bags, of any kind..	"	"
Seeds	"	"
Tiles	"	"
Bricks, of all kinds	"	"
Oil Paints	"	30	0 0 1½
Paints, in Powder..	"	20	0 0 1
Vermillion	"	10	0 0 0½
Fine Tin..	"	30	0 0 1½
Wine, in casks	Decalitre.	360	0 1 8
Wine, in bottles	"	600	0 2 8

All other goods not mentioned here, 6 per cent. *ad valorem*, whatever may be their nationality or precedence.

Excepted from those in the tariff in the Custom House of Lorenzo Marquez are Calicos, Sweet Oil, and others to eat, Linen Cables, Tin, Copper of China, Butter, Linseed Oil, and Iron, in Nails, which will pay 5 per cent. *ad valorem*.

The exportation in the Custom Houses of the Province is 3 per cent. *ad valorem*, with exception at Delagoa Bay, which is 1 per cent.

1 milreis equal to 4s. 5½d. English currency; 1 kilogram about 2 lbs. English; 1 decalitre equal to about 15 Imperial pints.



Table showing a number of Farms situated in different districts of the Transvaal Republic, the property of O. W. A. Forssman.

No.	Name of Farm.	District.	Division.	General Remarks.
1	Gansvley.. ..	Bloemhoff ..	Bloemhoff ..	Situated within one hour from the town of Bloemhof.
2	Schaapplaats	Potchefstroom	Schoonspruit ..	Surveyed.
3	Sweet Home	"	"	Do.
4	Concordia	"	"	Do.
5	Welgevonden	"	"	Unsurveyed.
6	Vogelstruispan	"	"	Surveyed.
7	Gruisfontein	"	"	Do. Adjoins the farm Welgevonden.
8	Werk en Lust	"	Maquazi ..	Surveyed. Situated a few miles from Amaquazispuit, where diamonds have been found. Formation of ground favourable. On the main road from the Diamond Fields to Marico and Tati Gold Fields.
9	Grootbosch	"	Schoonspruit ..	Surveyed. } One block.
10	Speculatie	"	"	Do. }
11	Houtkop	"	"	Adjoins the above farm Vogelstruispan.
12	Half Ruikersdam	"	Marico	Surveyed. Superior agricultural farm, situated in the mineral districts. See surveyor's report and certificate of assayer.
13	Hollfontein	"	Losberg	Surveyed. One block, 31,810 acres. Distance from Potchefstroom only 30 miles. On the main road from Potchefstroom to Natal. See surveyor's report.
14	Tweefontein	"	"	
15	Raatskraal	"	"	
16	Vlackplaats	"	"	
17	Hamburg	Wakkerstroom	Under Drakensberg ..	Surveyed. Watered by the Assagai River.
18	Witpoort.. ..	Heidelberg ..	Roodekopies ..	Superior agricultural, cattle, and sheep farm.
19	Rietkuil!.. ..	Pretoria.. ..	Pretoria	See surveyor's report.
20	Albion	Rustenburg	Not surveyed. Situated on the Limpopo River.
21	Davidskuil	"	Zwartruggens..	See surveyor's report.
22	Schildpadnest	"		
23	Roodewal	"		
24	Wildebeestpan	"	The three farms, Leopan, Kruispan, and Wildebeestpan, are in one block, situated between the Limpopo & Matlabas Rivers.
25	Leopan	"		
26	Kruispan	"		
27	Mooivley.. ..	"		
28	Grootfontein	"		
29	Hardekollult	"		
30	Kruisfontein	"	Surveyed. Minerals. See surveyor's report.
31	Loskop	"		
32	Elandskuil	"	Surveyed. On Limpopo River.
33	Naauwpoort	"		
34	Vogelstruisfontein.. ..	"		
35	Buffelshoek	"		
36	Zoutpan	"		
37	Elandspan	"		
38	Hendricksdale	"	On Matlabas River.

c Z	Name of Farm.	District.	Division.	General Remarks.
39	Springbokvley ..	Rustenburg ..		
40	Rotterdam	"		
41	Aken	"		
42	Driefontein	"		
43	Toelani	"	Surveyed. See surveyor's report.
44	Frankfort	"		
45	Tyldendale	"		
46	Holland	"		
47	Staankraal	"		
48	Dwaalpan	"		
49	Hartebeestdoorns ..	"		
50	Pagskraal	"	Superior agricultural and cattle farm. On Marico River.
51	London	"	On Marico River. Same as the above.
52	Crausebury	"		
53	Jagdfontein	Leydenburg ..		
54	Antioch	"		
55	Zuikerbosch	"		
56	Schoongezicht	"		
57	Thorny Bush	"		
58	Grootvalley	Waterberg ..	Nylstroom ..	
59	Cremoffartfontein ..	"	"	
60	Buffelshoek	"	"	
61	Klipplaat	"	"	
62	Palala	"	"	
63	Libanon	"	"	
64	Jonghanshoek	"	"	
65	Malmanies River ..	"	"	
66	Tambotiedraai	"	"	
67	Houtboschkloof ..	"	"	
68	Bulge River	"	"	
69	Malmanies Riv. Drft.	"	"	
70	Onverwacht	"	"	
71	Rietbokhoek	"	"	
72	Bankfontein	"	"	
73	Roodepunt	"	"	
74	Kaffershoek	"	"	
75	Krokodil River ..	"	"	
76	Boschdraai	"	"	
77	Langewater	"	"	
78	Tooiskraal	"	"	
79	Hartebeestpoort ..	"	"	
80	Wilgeboomsdrift ..	"	"	
81	Noitgedacht	"	"	
82	Bulspruit	"	"	
83	Goudfontein	"	"	
84	Yzerfontein	"	"	
85	Witfontein	"	"	
86	Varkensfontein ..	"	"	
87	Zaagkuil	"	"	
88	Paardedrift	"	"	
89	Antwerp	"	"	
90	Mimosa Park	"	"	
91	Avondale	"	"	} These farms are in one block. See surveyor's report.
92	Backwood	"	"	
93	St. Agnes Fontein ..	"	"	
94	Goedgedacht	"	"	
95	Waterhoutboom ..	"	"	
96	Koodoesfontein ..	"	"	

No.	Name of Farm.	District.	Division.	General Remarks.
97	Fairfield	Waterberg ..	Nylstroom ..	
98	Calmar	"	"	
99	Peterman	"	"	
100	Cosmopolite	"	"	
101	Murchison	"	"	
102	Bronkhorstfontein ..	"	"	
103	Tilbury	"	"	
104	Westland	"	"	
105	Eastland	"	"	
106	Early Morn	"	"	
107	Cornwall	"	"	
108	Oversprong	"	"	
109	Grootboek	"	"	
110	Roodsdale	"	"	
111	Vaalkoppies	"	"	
112	Orgeldrift	"	"	
113	Buffelskraal	"	"	
114	Dwars in de Weg ..	"	"	
115	Ostronolea	"	"	
116	New Brunswick	"	"	
117	Driekop	Leydenburg ..	"	
118	Diamant	"	"	

Table showing a certain number of Farms situated within a short distance of the Harts River.

No.	Name of Farm.	District.	Division.	General Remarks.
1	Gansvley	Bloemhoff ..	Bloemhoff ..	Diamondiferous.
2	Werk en Lust	Potchefstroom	Amaquazi ..	Near Amaquazispruit.
3	Schaapplaats	"	Schoonspruit ..	} On and near the high road from Potchefstroom to Marico and the Tati Gold Fields. Gruisfontein has fountain water for agriculture. All these farms are superior sheep-walks.
4	Sweet Home	"	"	
5	Concordia	"	"	
6	Welgevonden	"	"	
7	Vogelstruispan	"	"	
8	Gruisfontein	"	"	
9	Grootbosch	"	"	
10	Speculatie	"	"	
11	Houtkop	"	"	
12	Half Ruikersdam	"	Marico	
13	Pagskraal	Rustenburg ..	"	"
14	London	"	"	"
15	Naaupoort	"	"	"

Table showing a number of Farms already surveyed and ready for immediate occupation.

No.	Name of surveyed Farm.	District.	By whom surveyed.	Block.	No. of Acres.	General Remarks.
1	Vogelstruispan ..	Potchefstroom	Surveyor J. Rosselt ..		10,244	See surv. report.
2	Gruisfontein	"	"		9,259	"
3	Concordia	"	"		5,638	"
4	Schaapplaats	"	"		8,333	"
5	Werk en Lust	"	"		12,008	"
6	Davidskuil	Rustenberg ..	"		8,169	"
7	Driefontein	"	"		6,524	"
8	Toelani	"	"		10,907	"
9	Elandskuil	"	"		3,232	"
10	Kruidfontein	"	"		6,811	Minerals.
11	Hanburg	Wakkerstroom	Surv.Gen. M. Forssman		2,084	On Assagai River below Drakensberg.
12	Sweet Home	Potchefstroom	"		6,579	Adjoins Makokskraal, on the road from Potchefstroom to Marico.
13	Rietkuil	Pretoria ..	Surveyor J. Brooks ..		8,709	
14	Tweefontein	Potchefstroom	Surveyor J. Rosselt ..	3,781		One block of superior land within a few miles from Potchefstroom, on the transport road from Potchefstroom to Natal.
15	Raatskraal	"	"	5,624		
16	Hollfontein	"	Surv.Gen. M. Forssman	3,939		
17	Vlaekplaats	"	"	3,466	81,810	
18	Noitgedacht	Waterberg ..	Surveyor J. Brooks ..		3,405	In the midst of auriferous range of hills see surv. report.
19	Malmanies Riv. Drift	"	"		5,060	
20	Bulge River	"	"		8,431	"
21	Bulspuit	"	"		10,041	"
22	Tambootdraai	"	"		2,835	"
23	Malmanies River ..	"	"		8,037	"
24	Houtboschklouf ..	"	"		9,338	Adjoins Mr. Munro's farms.
25	Bankfontein	"	"		5,358	
26	Roedebokhoek	"	"		6,380	
27	Creamofartfontein	"	"		4,787	
28	Roedepunt	"	"		6,029	
29	Buffelshoek	"	"		7,126	29,680
30	Goudfontein	"	"		6,008	
31	Yzerfontein	"	"		3,525	Bounded by Mr. Munro's farms.
32	Grootvley	"	"		2,797	12,330 Minerals.
33	Boschdraai	"	"		6,519	
34	Krokodil River	"	"		4,352	Only about 4000 yards distant from the foregoing. Minerals.
35	Langewater	"	"		3,475	14,346
36	Klipplaat	"	"		6,047	
37	Palala	"	"		5,973	
38	Libanon	"	"		5,988	
39	Kaifershoek	"	"		6,445	
40	Jonghanshoek	"	"		4,210	28,663 Minerals.
41	Wilgeboomdrift ..	"	"		5,013	Close to Nylstroom.
42	Tooiskraal	"	"		8,520	
43	Wilfontein	"	"		9,717	18,237 Minerals. All surrounding farms occupied.
44	Hardebeestpoort ..	"	"		8,719	Minerals.
45	Dwalpan	Rustenburg ..	Surveyor J. Rosselt ..	2,499		On Limpopo River.
46	Staankraal	"	"	3,772	6,271	One road to Tati Gold Fields goes through the farms at Olie Drift.

No.	Name of surveyed Farm.	District.	By whom surveyed.	Block.	No. of Acres.	General Remarks.
47	Naanuport	Rustenburg ..	Surveyor J. Roselt ..		4,885	On Marico River.
48	Hardekolbult	"	"		5,806	On Limpopo River.
49	Loskop	"	"		3,516	Adjoins Hardekolbult
50	Hardebeestdoorns ..	"	"		3,586	Road to Gold Fields.
51	Riekersdam	Potchefstroom	"		4,085	Occupied and under cultivation. Large river boundary, and unlimited irrigation.
52	Thorny Bush	Leydenburg ..	Surveyor J. Brooks ..	6,890		See surv. report.
53	Schoongezicht	"	"	6,891	12,781	"
54	Suikerkop	"	"		6,856	"
55	Antioch	"	"		7,958	"
56	Grootbosch	Potchefstroom	Surv.Gen. M. Forssman	8,949		} Block.
57	Speculatie	"	"	7,212	16,161	
58	Koodoesfontein ..	Waterberg ..	Surveyor J. Brooks ..		4,699	
59	Waterhoutboom	"	"		5,254	
60	Petermann	"	"		5,392	
61	Murphison	"	"		4,111	
62	Calmar	"	"		6,344	
63	Onverwacht	"	Surveyor A. Walker ..		2,311	
64	Cosmopolite	"	Surveyor J. Brooks ..	8,146		
65	Fairfield	"	"	8,916	17,062	
66	Varkensfontein	"	"		2,752	
67	Paardedrift	"	"		4,271	
68	Zaagkuil	"	"		4,428	11,451
69	Antwerp '	"	"		5,891	} Several miles river frontage on the river Matlabas.
70	St. Agnes Fontein ..	"	"		5,891	
71	Backwood	"	"		5,891	
72	Avondale	"	"		4,834	
73	Goedgedacht	"	"		5,337	
74	Mimosa Park	"	"		5,884	
					1	
					83,679	
					456,185	

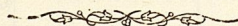


Table showing a number of Farms, with Natural Capabilities of Irrigation from Rivers or Streams.

No.	Name of Farm.	District.	General Remarks.
1	Elandskuil	Rustenburg ..	Large frontage on Crocodile River (Limpopo). On Assagai River.
2	Hamburg	Marthinus Wesselstroom or Wakkerstroom	
3	Rietkuil	Pretoria ..	Brunkorst spruit commences on this farm.
4	Malmanies River Drift	Nylstroom or Waterberg	600 to 800 acres of land can be irrigated on each of these farms.
5	Bulge River		
6	Bulspruit	"	
7	Tambootiedraai	"	
8	Malmanies River ..	Waterberg ..	At the junction of Malmanies and Sand Rivers.
9	Houtboschkloof	"	See surveyor's report.
10	Goud (Gold) Fontein	"	Minerals, supposed by the surveyor to
11	Yzer (Iron) Fontein ..	"	be Cobolt, apparently in abundance.
12	Grootvley	"	
13	Boschdraai	"	On Tambootie River. Rich iron ore
14	Krokodil River	"	and every sign of copper.
15	Langewater	"	
16	Jonghanshoek	"	On Palala River, abundance of minerals. In one quartz range gold has been found, and probably there will be found alluvial gold.
17	Wilgeboomsdrift ..	"	See surveyor's report. On the high road from Nylstroom to Maraba Town, where gold is found.
18	Staankraal	Rustenburg ..	On Limpopo River. Oliedrift, where traffic goes through, belongs to the farm.
19	Naaupoort	"	On Great Marico River.
20	Hardekolbult	"	On Limpopo River.
21	Loskoppie	"	See surveyor's report.
22	Riekersdam	Potchefstroom	On Great Marico River, in the midst of inhabited farms and under cultivation.
23	Thorny Bush	Leydenburg ..	Situated in the vicinity of the Portuguese seaport, Delagoa Bay.
24	Schoongezicht	"	
25	Antioch	"	
26	Koodoesfontein	Waterberg ..	One of the old choice farms selected by an experienced farmer as long ago as 1858. Being bounded by mountain ranges, it stands a chance of being metalliferous.
27	Waterhoutboom	"	On Mambasspruit, only distant two miles from the large block of six farms—Avondale, St. Agnes Fontein, &c.
28	Calmar	"	Bounded by Mazuka River Spruit.
29	Onverwacht	"	Amongst the hills that runs from Zoutpansberg through Waterberg down to Limpopo River.
30	Varkensfontein	"	On a high level plateau at the sources of the Palala River.
31	Paardedrift	"	
32	Zaagkuil	"	
33	Avondale	"	
34	Goedgedacht	"	
35	Mimosa Park	"	
			On Matlabas River.

CERTIFICATES OF
MINERALS, COTTON, COFFEE, AND TOBACCO

FROM THE TRANSVAAL, SHIPPED TO LONDON.

No. 1. Certificate of Assay of Gold and Lead Ores:—

Assay Offices and Laboratory,
6 and 7, Coleman-street, E.C.,

To Messrs. G. F. NEAME & Co.

25th January, 1869.

GENTLEMEN,—I have examined the two samples of gold and lead ores forwarded on the 22nd instant, and find the following to be the result:—
No. 1. Small pieces of quartz in box: fine gold, 16 ozs. 16 dwts. 6 grs. per ton of ore. No. 2. Two lumps of quartz with galena: lead, 31 per cent., silver, 16 ozs. 3 dwts. per ton of ore.—Yours, &c.,

Pro F. CLAUDET, F. CHAMBERLAIN.

No. 2. Certificate of Assay of one piece of Lead Ore (Galena)
—9½ ozs. silver per ton. Locality, Groot Marico, E. Potgieter.

A. HUBNER, Mining Engineer and Assayer.

Potchefstroom, July 5, 1869.

No. 3. Analysis of a large piece of Lead Ore forwarded by
A. Forssman—62 per cent. of lead, 31 ozs. 11 grs. of silver,
to the ton of ore.

Consulate South African Republic,
69, Fenchurch-street, E.C.

Extract from a letter dated 4th February, 1869:—

The coal received from you is very inferior, containing a "great percentage of ash, &c. Another sample I have from the neighbourhood of Utrecht is better, but in both cases I presume it is surface coal, and the quality would doubtless improve on sinking lower, and be found to contain a greater amount of bituminous and gaseous matter.

J. J. PRATT.

No. 4. Plumbago—68 per cent. ashes, 32 per cent. graphite.
Locality, Groot Marico, A. Forssman's farm, Riekersdam.

A. HUBNER, Mining Engineer and Assayer.

Potchefstroom, May 7, 1869.

No. 5. COTTON.

London, 8th October, 1868.

Messrs. G. F. NEAME & Co.

GENTLEMEN,—We have examined the small sample of cotton received from you, and at the foot beg to hand you a report of the quality and the present value.—Yours faithfully,

(Signed) J. CLOUT & Co.

Cotton in the seed, good staple, very little stain and leaf, value in present state, 3d. per lb., if cleaned, 9½d. to 10d.

No. 6. COFFEE.

This coffee is in the husk, and in that state is not worth more than 20s. to 25s. per cwt. in this market, in consequence of the dearness of labour in this country. It would, we have no hesitation in saying, never pay you to import. If you can get it properly cleaned from all the outside coat and then washed, it would no doubt command from 65s. to 70s. per cwt., it being to all appearance a sound serviceable coffee.

(Signed) CLAGETT BRACHI & Co.

No. 7. TOBACCO.

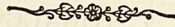
8, Billiter-square, E.C., 8th October, 1868.

Messrs. G. F. NEAME & Co.

GENTLEMEN,—With reference to the specimen of tobacco from South Africa which you showed us, we regret to say it is out of our power to give you a satisfactory report. The very wet state in which it is, leads us to imagine it must have become injured by water after arrival, as we do not suppose it to be possible anyone can have sent a specimen forward in such a state. So far as we can judge, it appears to possess much strength, and we believe where such leaves have been produced, the soil must possess the requisite properties for the cultivation of the staple. The great point, however, is the subsequent preparation or "curing of the leaves." Now, this process varies in different countries, according to climate, &c. We fear any remarks we might make on this subject would possibly only lead to confusion, and we can only suggest, if your friends have at command a sufficient amount of labour, that they should endeavour to find some agent from the United States acquainted with the culture and preparation, as we think from the strength and quality of the specimen it is probable there is more resemblance to the growth of that part of the world than to any of the growths of Europe.

(Signed) CLAGETT BRACHI & Co.

In explanation of the remarks upon the tobacco having arrived in a wet state, and the coffee in husks, I beg to mention that my object in sending these to England was principally to ascertain the value of the article when properly prepared for market, and to prove that the soil of the Transvaal is capable of growing these valuable products, which, if produced for the purpose of a regular occupation or branch of agriculture, would certainly have to be properly prepared for a market before sent away from the plantation.



COPY OF SURVEYORS' REPORTS.

(The name of the Surveyor will be found in the table of the surveyed farms. The greater part of these farms were surveyed from the year 1869 to 1871.)

No. 1. VOGELSTRUISPAN, is principally adapted for cattle, but it is asserted that, like many parts of this country, it will in course of time become suitable for sheep also. Agriculture on a limited scale might also be carried on, for which the soil in some places is well adapted, and the farm possesses facilities for making dams, and increasing the supply of water by enlarging the periodical vleys or pans. Distance from Potchefstroom, 60 miles.

No. 2. GRUISFONTEIN, is a sheep walk of the best description, also well adapted for cattle and agricultural purposes, is well supplied with good water by never-failing springs, and is capable of pasturing an unlimited number of stock. The road from Potchefstroom to Marico and the Gold Fields leads through this valuable property.

No. 3. CONCORDIA.—The annexed diagram represents the farm Concordia, belonging to Mr. A. Forssman, situated in the district of Potchefstroom, South African Republic, and containing 6,524 English acres. The farm Makokskraal, belonging to Field-cornet D. J. Coetzé, distant about 9 miles from Concordia, on which cattle and sheep do well, must be taken as a criterion of the pasturage of Concordia, which, at the time of survey, had been destroyed by fire, owing to the stupid custom of burning the grass, yearly practised in this country. A branch road from Potchefstroom, from which it is distant about 50 miles, passes through it to Marico and the Zwarte Ruggens. Water during the rainy season accumulates in vleys or pans, and facilities exist for increasing the supply.

No. 4. SCHAAPPLAATS.—The annexed diagram represents 10,307 English acres, being the extent of the farm Schaap-

plaats, situated in the district of Potchefstroom, South African Republic. The pasture having been destroyed by the pernicious custom of annually setting fire to the grass, renders it impossible to state from personal knowledge for what purpose the farm is most suitable; but, judging by the adjoining farm, Rietfontein, occupied by a wealthy farmer (G. du Toit), on which cattle, sheep, and goats thrive uncommonly well, it is only reasonable to suppose Schaappaats possesses similar capabilities. Two roads pass within a few miles of this place, one from Potchefstroom, from which it is distant about 70 miles, through Bultfontein to the Zwarte Ruggens and Marico, and one from the Saltpan, Potchefstroom, and a missionary station about 15 miles distant, through the place Schoongezicht, from both of which it can be easily reached, the country being level.

No. 5. WERK EN LUST.—The annexed diagram represents the farm Werk en Lust, in extent 12,008 English acres, situated in the district of Potchefstroom, South African Republic, which is possessed of the following capabilities:—
1st. Its unprecedentedly large extent (nearly double the usual size) will admit of its being divided into two separate farms, each capable of pasturing the ordinary number of stock usually possessed by a well-to-do farmer. It is well adapted for sheep, and is frequently made use of by some of the proprietors of the adjoining farms, whose sheep always improve by the change. Cattle also thrive particularly well, the pasturage being of a superior quality. Both the climate and soil are favourable for the production of different kinds of grain and fruit, for which a ready market would be found at either Klerksdorp or Potchefstroom, being only 15 miles from the former, and 60 miles from the latter place. The valleys afford excellent facilities for the construction of dams, and several *kuilen* (periodical pools) have been formed by heavy rains, in which a moderate quantity of water accumulates during the rainy season. A good supply of timber (the mimosa tree) principally used for firewood, also abounds.

No. 6. DAVIDSKUIL, district Rustenburg.—This is one of the few farms which might be said to baffle description, unless recourse be had to language extravagant, but which must even then necessarily fall far short of the capabilities of such an invaluable domain. A very faint idea can be derived from the following:—Imagine an extent of 8,169·97 English acres, consisting of a high table land stretching from north to south through the middle of the farm, and valleys with

periodical streams meandering through them, covered with pasturage of the finest description and suitable to all kinds of stock, which it is said thrive unprecedently well. Added to this, is an extensive forest of mimosa trees, the value of which is so well known in the Transvaal; then next comes a good road to the *Jagdvelt* (hunting grounds), which not only leads to game large and small, but to the Gold Fields. Who will attempt to form an estimate of the traffic that will and must ere long be carried on through this oasis in the desert, and the fortune which will be realised by its fortunate possessor for supplies of all descriptions furnished to thousands upon thousands of travellers, which may be raised on his own ground, the soil and climate being pre-eminently adapted for producing coffee and all kinds of cereals. Distance from Rustenburg, 45 miles.

No. 7. DRIEFONTEIN, district Rustenburg.—Driefontein, represented by the annexed diagram, is situated about 45 miles north of the village of Rustenburg, and about 25 miles to the south of the nearest point of the Crocodile River, in which it is reported gold has been found. The pasturage is well adapted for cattle, sheep, and goats, but cattle thrive best. The hills are covered with different kinds of timber, of which the boegen wood forms the principal, which is extensively used in the country for the manufacture of articles of household furniture. Three periodical streams run through this farm, and afford excellent facilities for constructing dams. Water, which has been found at a depth of only 18 inches, may also be obtained by sinking wells. The soil is well adapted for agricultural purposes, crops of Indian and Kafir corn being raised by the natives without irrigation. As this farm is situated in the coffee-growing district, that valuable tree would thrive particularly well in the valleys; the bushy hills also afford shelter from the cold winds.

No. 8. TOELANI, district Rustenburg.—The capabilities of this farm are vast. It is situated in the coffee-growing district, and has an unlimited supply of water in the summer season, which can with a trifling outlay be made to last from season to season, as the river overflows its banks and forms a lagoon several miles in length and about 30 yards wide, from which the surrounding ground, at present covered with a forest of thorn wood trees (mimosas), when cleared, may be irrigated, and hundreds of acres brought under cultivation. The expense of clearing, which would be more than covered by the sale of the timber, for which a ready market would be found, many

parts of the Republic being badly supplied with firewood, rendering the forest a fortune in itself. The soil will produce from the coffee bean to the most insignificant cereal, all of which grow luxuriantly in the immediate neighbourhood. Stock of all descriptions thrive well, for which the pasture is eminently adapted. Game, both large and small, is found in great numbers, as also the ostrich. The farm is capable of pasturing an immense quantity of stock; it also admits of being subdivided into several portions having separate homesteads, without risk of one interfering with the other, each of which would yield a competency to an industrious occupier. The oxen and horses employed at the time of survey remained in perfect health, and even improved in condition, notwithstanding the work. To the best of my judgment the foregoing is a faithful description of the farm Toelani, as found by me. Distance from the town of Rustenburg, 55 miles.

No. 9. ELANDSKUIL, district Rustenburg.—Extending eastwards to that magnificent stream, the Crocodile River (Limpopo), whose bed is said to be auriferous, little else is requisite to make it a valuable estate; but, besides having such a valuable boundary, it possesses capabilities as vast as they are valuable. Need more be said than that it is situated in the district of Rustenburg, where the coffee tree may be said to be indigenous. Who will dare to doubt then that in the course of a few years that valuable article will become one of export, instead of ruinous import, and that Elandskuil, together with her sister farms on the banks of the Crocodile, will contribute her quota, which ought by no means to be small or inconsiderable. To this must be added that in the winter season, when the pasturage becomes insufficient for the maintenance of stock in the neighbourhood of Rustenburg, the country along the Crocodile forms a refuge for the impoverished cattle, which latter do not wait until sent there, but take French leave, and only leave their owners to follow, and which proves that the pasturage at that season must be excellent beyond description. Timber of various kinds is also found along the fertile banks of the river; and extending over the breadth of the farm is found the mimosa tree, so valuable for firewood, and which is very scarce in some parts of the Transvaal. Distance from Rustenburg, 80 miles.

No. 10. KRUIDFONTEIN, district Rustenburg.—This place has for many years past enjoyed the reputation of being rich in minerals; and justly so, if one must judge by indications, the

hills south of the river being chiefly composed of ironstone, on which little or no vegetation is to be seen. The valleys afford good grazing for cattle, and sheep and goats are said to thrive well on the high ground, on which the pasturage is excellent. The soil is also well adapted for agricultural purposes, the adjoining place, cultivated by the natives of the missionary station at Ramakoks, and about 6 miles to the westward of Kruidfontein, producing Indian and Kafir corn without irrigation. Timber is also found suitable for building purposes, and firewood in abundance. The Sand River, a periodical stream, falls into the Crocodile River, about 4 miles to the eastward, and is more than probable to have carried from Kruidfontein and neighbouring country the gold which is said to have been found in the Crocodile. When to the foregoing is added that it is situated in the Rustenburg district, where coffee is so well known to thrive, and for the cultivation of which Kruidfontein has many a well-sheltered acre, its lucky owner will be as certain of drinking of his own coffee tree, as of old they were accustomed to drink of their own vine and eat of their own fig tree. Distance from Rustenburg, about 50 miles.

No. 11. HAMBURG, district Wakkerstroom.—The farm Hamburg, in extent 984 morgen 387 square roods and 32 feet, Rynland's measure (2084·042 English acres), is situated on the Assagai River, about one hour on horseback, north-west of the Slangpiesse Mountains, and five and a quarter hours on horseback north-east from the town of Marthinus, Wesselstroom. It was inspected in Sept., 1863, for Mr. H. Schickerling, who received the title deeds from this Government on Jan. 9th, 1867.

No. 12. SWEET HOME, district Potchefstroom.—The farm Sweet Home, *alias* Hollagte, in extent 3,108 morgen 421 square roods and 91 feet, Rynland's measurement (6,579·693 English acres), is situated on the east side of Schoonspruit, six and a half hours on horseback from Potchefstroom, and about five and a half hours from Klerksdorp. The great western wagon road from Potchefstroom to Marico, as well as two other wagon roads to the Saltpan and Zwarte Ruggens, go through this farm. Two rivulets, which during the winter gets dry, have their origin on this farm, and by the places marked X and Y on this diagram. There are superior facilities for constructing dams. On the eastern side of this farm is a large pan with fresh water, and on the south-east side is a bush of thorn trees. The grass is good, and suitable both for cattle and sheep.

No. 13. RIETKUIL, district Pretoria.—This farm, inspected in January, 1865, by P. T. Muller, M. T. Prinsloo, and C. Maritz, lies on the Pretoria high veldt, to the left of the main road from the Republic to the seaport of D'Urban, Natal, and it ranks as a first-class stock-farm in that district. The grass is short and sweet, and of the description here most highly esteemed for sheep. The fountain marked on the diagram is sufficiently strong to irrigate 400 to 500 acres of land, for the cultivation of which no other implement is wanted save the plough, the land being a rich black loam, nearly approaching to moss, and without a stone. The standing water on the farm is sufficient for any number of stock that the farm will maintain during the whole year. There is sufficient stone near at hand for building purposes; and within 6 miles there is surface coal in abundance, while the farm itself is situated in the middle of the coal country, and I have no doubt that, were borings to some depth made, coal would be found on it.

No. 14. TWEEFONTEIN, 15. RAATSKRAAL, 16. HOLLFONTEIN, 17. VLAKPLAATS.—The above four farms, forming one block of 31,810 English acres, are situated on the main road from Potchefstroom to Natal. Distance from Potchefstroom, about 35 miles. The nature of the block being nearly the same, the surveyors' reports, as below, of two of these properties, will suffice. The great traffic on the main road to Natal goes through the two farms, Hollfontein and Vlakplaats. Tweefontein—The annexed diagram represents 4,149 morgen and 63 square roods of land (8,781·57 English acres), being the extent of the farm Tweefontein, the property of A. Forssman, situated in the district of Potchefstroom, South African Republic, inspected on the 13th December, 1858, for Roeloff G. P. Pretorius, by Field-cornet C. Dreyer's Commission. It is bounded as shown by the diagram, the beacons having been pointed out to the undersigned by Inspectors Commandant Theunis Pretorius and Field-cornet G. Engelbrecht. Distance from Potchefstroom, 35 miles. The spring marked in the diagram, if opened, would yield a sufficient supply of water for ordinary purposes, besides which there are several periodical pools in the valleys, which may be enlarged so as to contain a supply of water sufficient to last a considerable time. There are also several vlees, in which the water is collected with the slightest showers, so that this farm may be considered to be well provided with water, as well as possessing many facilities for increasing the supply. It is also suitable for all kinds of stock, but the pasturage is particularly adapted for sheep, rendering it an excellent "sheep-walk" during the summer

months, and as these are scarce in this district, this property will in course of time have an additional value. Agriculture on an extensive scale might be carried on, as the soil is good, cereals and fruit of all descriptions being grown in the immediate neighbourhood, which is occupied by the Commandant and Field-cornet of the district, and several well-to-do farmers. The main road from Potchefstroom to Natal passes within a few miles of this place. Raatskraal—The annexed diagram represents 2,657 morgen and 208 square roods of land, equal to 5,624·26 English acres, being the extent of the farm Raatskraal, situated in the district of Potchefstroom, South African Republic, the property of A. Forssman, Esq., and inspected on the 2nd June, 1865, for Roeloff P. G. Dreyer, by the Commission of Field-cornet G. Engelbrecht. It is bounded as shown by the diagram, and the beacons pointed out to the undersigned by Inspectors Commandant Theunis Pretorius and Field-cornet G. Engelbrecht. Distance from Potchefstroom, 35 miles. The locality being healthy in which this farm is situated, renders it suitable for different kinds of stock; but the pasture is particularly adapted during the summer for sheep, which renders it of more than ordinary value, sheep-farms being much sought after. The valleys afford excellent facilities for the construction of dams and the periodical pools already formed by nature contain large quantities of water, which last a considerable time. Pans or vleys are also found, in some of which the water quickly collects, and which, with a trifling outlay, might be made to retain large quantities of water. A branch road, now beginning to be much used, passes through this property, and joins the Natal main road some twenty miles beyond it. The farm is also well adapted for agricultural purposes, as the immediate neighbourhood produces different kinds of grain and fruit, and is occupied by some of the wealthiest farmers in the Republic.

No. 18. NOOITGEDACHT, district Nylstroom, Waterberg.—This farm is situated amongst the hills, and is essentially a stock-farm, the slopes being too steep and the ground too rocky to admit of cultivation. There is an abundance of water and plenty of firewood on it for all purposes, and it lies right in the midst of the *auriferous* range of hills, beginning at the Tati and running on to Leydenburg district in a south-easterly direction. Distance from the town of Nylstroom, about 40 miles, W. by N., adjoining the farm Grootfontein, of Mr. W. Munro.

No. 19. MALMANIES RIVER DRIFT, No. 20. BULGE RIVER, No. 21. BULSPRUIT, No. 22. TAMBOOTIEDRAAI, all in the district

of Nylstroom.—These farms are situated on the road from Nylstroom to the Limpopo and Tati Gold Fields, on the Malmanie and Sand Rivers. The former of these is a strong permanent running stream, and the latter a large river. Bulspruit is distant from Bulge River northwards about $2\frac{1}{2}$ miles, and Tambootiedraai only a few hundred yards from Malmanies River Drift. There is plenty of good soil of a light loamy nature, and the situation facing north by east under the hill, is the best that can be had. Frost is scarcely ever to be seen in the locality, and the climate is almost tropical. Coffee, sugar, and other products of a similar kind, are those best suited to this part of the country. Cereals also give large returns and good profits, especially now that the Gold Fields are being opened up. There is an abundance of native labour within about 15 miles of the ground; and on the farms Malmanies River Drift and Bulge River, where the streams issue from the hills, a strong water-power is ready to the hand without trouble. There is on all the farms an over abundance of firewood, with a good supply of serviceable timber for general use. Stone is to be had in any requisite quantity for building purposes. The grass, which is here termed "sweet," is plentiful, good, and almost evergreen, rendering the farms first-class cattle-runs. On each of the above farms the water can be led to at least from 600 to 800 acres of land, this affording a large supply of irrigable land. Distance from Nylstroom, about 47 miles, N.W., and situated on the main road from Nylstroom to the Limpopo River.

No. 23. MALMANIES RIVER, district Nylstroom.—This farm is situated at the junction of Malmanies with the Sand River, and is plentifully supplied with water from both rivers, but the nature of the ground is such as to render only the south-western part capable of cultivation; the soil and situation there is good and well sheltered, and tropical products of every description would thrive well. As a stock-farm it is well situated, the hills and river valleys being well supplied with plenty of rich sweet grass, and affording cattle capital grazing ground, the hilly nature of the ground being rather an advantage than otherwise. Distance from the town of Nylstroom, about 52 miles, N.W.

No. 24. HOUTBOSCHKLOOF, district Waterberg.—This farm is situated on the north-east side of the Sand River, within 400 or 500 yards of Tambootiedraai, and is very similar to that farm in the nature of the soil, grass, wood, timber, &c. The river here runs very sluggishly and deep, and would be difficult to lead,

but the small streams afford a fair supply of water. The lie of the ground is from north-east to south-west, facing that of Tambootiedraai. Distance from Nylstroom, about 47 miles, N.W. Adjoins Mr. W. Munro's farm, Zeekoegat.

No. 25. BANKFONTEIN, No. 26. ROODEBOKHOEK, No. 27. CREAMOFTARTFONTEIN, No. 28. ROODEPUNT, No. 29. BUFFELSHOEK.—These farms are situated on the small stream marked as Barkuilsloop, and are distant from Tambootiedraai, on the Sand River, about 7 miles east by north; and a wagon road running through the corner of the block goes direct to Nylstroom, distant about 45 miles. On the adjoining farm there are a good number of Kafirs located, so that labour is at hand. The ground is a light and sandy soil, but the climate is good and the situation favourable for the planter. There is an abundance of firewood, with a sprinkling of timber suitable for working purposes ready to hand. Good building stone is also there, north of the stream, by the ridges, ready for use. The neighbouring farm of Bulfontein is possessed and greatly prized by an old inhabitant of the country, Mr. A. Smith, while close at hand, within 600 or 800 yards on the east side, lie some farms belonging to Mr. G. T. Verdoorn, the largest speculative landowner in the district. This block contains 29,680 English acres and 22 roods.

No. 30. GOUD (GOLD) FONTEIN, No. 31. YZER (IRON) FONTEIN, No. 32. GROOTVLEY.—These farms laying on the top of the hills, at the sources of the streams, are splendid grazing grounds, the steep hill sides and deep valleys affording excellent cover and splendid runs for the cattle. Bulfontein, adjoining, is used by the owner as a winter farm for his cattle; and on the adjoining farm a number of Kafirs are located, proving that the ground is to their liking for gardening and grazing purposes. On Goudfontein more than half of the land can be made available for cultivation; and on Grootvley there is also a large acreage of ploughable land. On the middle farm the nature of the ground is such as to render only small pieces here and there fit for use. Cereals of all kinds will grow well, and the more hardy of tropical products. Firewood, timber, and stone are there in abundance; and on all three farms strong signs of mineral wealth. On Goudfontein, at the small hill in the north-west corner, there has been deep trenches dug, and a kind of mineral obtained (supposed by the surveyor to be cobold) apparently in abundance. The block of these farms contain 12,332 English acres and 34 roods. Distance from Nylstroom, about 48 miles, N. by W. $\frac{1}{2}$ W.

No. 33. BOSCHDRAAI, No. 34. KROKODIL RIVER, No. 35. LANGEWATER.—These farms, although only about 4,000 yards from the foregoing, are below the hills, and the temperature is much warmer. All kinds of tropical products will thrive well on them, and they have an abundant supply of water, wood, and stone, and a good extent of cultivatable land. The pasture is good, and on the hill sides there is every sign of copper, and rich iron ore is to be seen in many places ready to hand. Situated between Mr. W. Munro's and Mr. Verdoorn's lands. Distance from Nylstroom, about 50 miles, N. by W. The block contains 14,347·7 English acres.

No. 36. KLIPPLAAT, No. 37. PALALA, No. 38. LIBANON, No. 39. KAFFIRSHOEK, No. 40, JONGHANSHOEK.—These farms are situated on the Palala River, where it leaves the hills, and adjoining on the east side is a block of sixty surveyed farms belonging to Mr. G. T. Verdoorn. The most easterly of the farms, Jonghanshoek, under the hill and bounded by the river, is one of the best situations for the planter that could be procured. Warmth, absence of frost, plenty of good land for cultivation, and native labour within 600 yards of its boundary, are some of its qualifications—plenty of wood, water, &c., are others. The other four farms being in the hill country, are less available for cultivation. Still there are some small pieces of good land on them, and their vicinity to the large block already mentioned cannot fail to enhance their value. As stock farms they are excellent, which is sufficiently proved by the immense number of game now on them, it being well known that the buffalo will not stay on bad pasture lands. The greater part of the ground is rocky, but there are here and there pretty spots for homesteads, and everywhere firewood and water are plentiful. The farm Jonghanshoek, below the mountain, is rich in mineral wealth, and the Kafirs are constantly mining copper, &c., on that place. It has also, not far below, a quartz range, in which gold is found, and will very probably be rich in alluvial. On the top farm iron is to be found in abundance. Copper also exists on it. Distance from Nylstroom, about 50 miles, N. by W.

No. 41. WILGEBOOMSDRIFT, district Waterberg.—This farm is situated close to the town of Nylstroom, on the high lands, and is a very valuable one for a sheep-run. It is abundantly supplied with water. The grass is short, plentiful, and good, and on the neighbouring farm sheep are the chief source of profit. This, in a district where sheep farms are scarce, is a great advantage. Cereals can also be grown in abundance,

and will do well. The situation is good, high, and healthy, and as a summer residence most desirable, its vicinity to the town being a great advantage. It lies in the middle of the farms selected by the emigrant boers when the district was first populated, a sufficient guarantee that it is one of the best spots in the locality. Situated between the two farms of Mr. W. Munro. Distance from Nylstroom, about 4 miles, N. by E.

No. 42. TOOISKRAAL, No. 43. WITFONTEIN, No. 44. HARTEBEESTPOORT.—These farms are situated in and east of the Rooybergen, and are excellent stock-farms for sheep or cattle. The surrounding farms are all occupied, and much thought of. The pasture is uncommonly rich, sweet, and good, the land being most fertile, and only wants the plough to render it valuable. Hartebeestpoort, in the hills, is a very good sheep-run, the ground being high and open, while the others eastwards are more warm and level. Tobacco in particular grows to great advantage here. They have plenty of wood, stone, and water, &c., and are on the wagon road from the Pretoria district to Rooyberg. This road is open and good from Pretoria to the farm, being in constant use by people going in quest of timber and game. On the farm Tooiskraal I got several pieces of copper ore and some lead, and on Hartebeestpoort, if looked for, I am sure both minerals will be found in large quantities. Distance from Nylstroom, about 40 miles, W. by S.

No. 45. DWAALPAN, district Rustenburg.—The annexed diagram represents 1,180 morgen and 486 square roods of land (2,499·17 English acres), being the extent of the farm Dwaalpan, situated in the district of Rustenburg, South African Republic, the property of A. Forssman, inspected 11th January, 1867, by the commission of Zarel Eloff, Field-cornet, for J. H. Venter, upon a right purchased of J. P. Marée. This farm in its present state is only adapted to graze cattle, the pasturage being good, and as such would form a valuable auxiliary to the adjoining place Staankraal. Distance from Rustenburg 120 miles.

No. 46. STAANKRAAL, district Rustenburg.—The annexed diagram represents 1,782 morgen and 259 square roods of land (3,772·5 English acres), being the extent of the farm Staankraal, situated in the district of Rustenburg, South African Republic, the property of A. Forssman, inspected 11th January, 1867, by the commission of Zarel Eloff, Field-cornet, for J. H. Venter, upon a right of A. G. Schoonbe. Staankraal, or Olie-drift, is one of those peculiar farms which

require to be seen in order to be fully appreciated. Suffering under the disadvantage of being a considerable distance from the nearest village, nature has tried to compensate for this drawback, for drawback it is, by bestowing upon Staankraal some of her richest blessings—a pure and permanent stream. The Crocodile or Limpopo River watering its eastern boundary, refreshes the weary traveller and his cattle after a long march of thirty miles without that essential element, to which must be added the luxuriant pasturage found on the banks of that grateful stream, making the traveller reluctant to part with a spot so richly endowed by nature. Feeling doubtful if such another encampment can be in store for him, he would stay to enjoy the picturesque scene, but which is only in store for the fortunate occupier, who will have a daily treat of which he cannot weary; for, standing at one extremity of the vast plain before him, covered with tall waving grass and surrounded by a forest of magnificent trees, giving it the appearance of a lake in a park, he beholds game, large and small, stealthily approaching the banks of the silvery stream to quench their burning thirst, which a tropical sun has made them feel in no small degree. Looking in another direction, he perceives his cattle peacefully browsing in the rich meadow, which contains an unlimited supply of fine and sweet grass, almost hiding those that are lazily lying down, and which imparts to them a stall-fed appearance, enabling him when business calls him to Rustenburg or any other place, to travel without the risk of losing any through poverty, and at almost railway speed compared to others who are not so fortunate in having cattle in such condition. Turning to his lands, he already is rewarded for his toil and trouble by beholding his crops standing in variety and the richest profusion, only waiting for the harvest season to be gathered in, when he can drink coffee of his own growing and have bread of his own corn, &c., besides supplying those daring adventurers proceeding to the Gold Fields. The best road that can be travelled in the winter season being that which leads to Staankraal, is another important advantage it possesses. Distance from Rustenburg, about 125 miles.

No. 47.—NAAUWPOORT, district Rustenburg.—Naaupoort, situated about fifty miles N.W. of Rustenburg, on that inexhaustible stream the Great Marico River, possesses every facility to render it a valuable farm. At point D in the river (see diagram) is an excellent place for taking out the water by damming the river, and immediately below is a piece of open ground, which could be irrigated out of the dam so made

without the trouble and expense of clearing any bush, and the soil being good, the enterprising farmer would soon see the fruits of his labour in a plentiful harvest. The climate is well adapted for the production of all kinds of cereals, and there can be no doubt that coffee will also thrive, the farm being situated in the coffee-producing district. The pasturage also is of a superior quality, well adapted for different kinds of stock, rendering the place complete regarding every requisite to make it a desirable estate. The track marked in the diagram is used by the natives, and could with a trifling outlay be made a good wagon road.

No. 48. HARDEKOLBULT, district Rustenburg.—The place Hardekolbult is an excellent stock-farm, having an unlimited supply of that element which is but too scarce in some parts of this Republic, viz., water, the Crocodile River being the boundary, besides which another small stream passes through the farm, which affords a great facility to water stock during grazing hours, thus dispensing with the necessity that would otherwise exist of driving them from their pasturage to the river. By raising a small embankment, the stream passing through the farm can be made available for irrigation, whereby agriculture on an extensive scale might be carried on, both climate and soil being favourable to the production of cereals of every description; and as this place is situated in the Rustenburg district, coffee is also likely to thrive.

No. 49. LOSKOPPIE, district Rustenburg.—Loskoppie, bounded on the north and south by a range of high hills, the level country below interspersed with clumps of trees, presenting a park-like appearance, and a small but permanent stream—the drainage of several small springs on either side of its banks—meandering through the midst of the place, complete a most picturesque romantic little spot. These springs would, if properly opened, yield a sufficient supply of water for the purposes of agriculture, for which the soil is well adapted; also, as a cattle farm, it is second to none in that locality, the pasturage, which is of a superior quality, more than compensating for the deficiency in extent, as the whole of it is good. The distance from Rustenburg, the nearest village, is about 70 miles, with a good road leading to it. This farm adjoins Hardekolbult.

No. 50. HARTEBEESTDORNS, district Rustenburg.—This place is essentially a stock-farm, and the pasturage of excellent quality. Facilities also exist for making dams. The road which bounds this farm on the west leads to the Gold Fields, and is

the best that can be travelled in the summer season, when the water, which at that time is scarce, can be reached sooner by taking this than any other road. Distance from Rustenburg, 110 miles.

No. 51. RICKERSDAM, district Potchefstroom.—Rickersdam, situated as above, and about 30 miles to the eastward of the new village of Zeerust, is bounded by the Great Marico River, a more beautiful and constant stream than which is not to be seen in the whole extent, vast as it is, of the South African Republic. No wonder then that Marico forms the centre of attraction to those who seek their fortunes in that wealthy part of the State, and who are sure, if industry accompany perseverance, to find it. With a richly productive soil, of which any reasonable extent might be brought under cultivation (the portion shown in the diagram being a mere mite of that which might be cultivated), and cereals of all descriptions growing luxuriantly, the farm Rickersdam leaves its fortunate possessor little else to be desired. The neighbourhood is well known to abound with lead in an almost pure state, and on Rickersdam a bed of plumbago exists of a very fine quality, so that the soil can safely be pronounced rich in every respect. The pasturage, consisting of good and sweet grass, is suitable for any description of stock, which thrive particularly well. Distance from Potchefstroom, 130 miles; from Rustenburg, about 60 miles.

No. 52. THORNY BUSH, No. 53. SCHOONGEZICHT, in the district of Leydenburg.—These farms are situated in the Leydenburg district of the South African Republic, east of the Drakensberg Mountains, about 50 miles west of the new line between the Republic and the Portuguese Government. They are southwards within about 40 miles of the River Sabie. The soil is a light and sandy loam, frost is unknown, and the climate at all seasons is almost tropical. There is a fair supply of water on both farms, while through the one runs a large stream, called by the natives Stone River. There is an abundance of timber for all purposes, and stone is to be obtained in plenty on the banks of the stream. The farms are, I believe, well adapted for the cultivation of coffee, sugar, and all tropical products. The above two farms adjoin each other. Distance from the town of Leydenburg, about 60 miles.

No. 54. ZUIKERKOP, district Leydenburg.—This farm lies to the east of the Drakensbergen, in the district of Leydenburg, on the ridges as they slope from the mountains, about sixteen miles from the north-west corner of McCorkindale's block of

ground named "Alexandria." The soil is a light loam, the climate is warm, and frost almost unknown. There is plenty of timber on the ground for erecting homesteads, and an unlimited supply of firewood on all sides. This farm lies in the middle of a district that will be valuable when the eastern seaport is once opened, through its vicinity to the port and its adaptability for the cultivation of all tropical products. Distance from Leydenburg, about 48 miles, E.N.E.

No. 55. ANTIOCH, district Leydenburg.—This farm lies in the district of Leydenburg, about four miles east of the Drakensbergen and some nineteen miles north-west of McCorkindale's ground. The farm is well watered and wooded, and is all that could be desired for tropical produce, and easily cultivated, being at present well stocked with Kafirs, whose aptitude in picking upon the best ground is particularly evinced in this instance. The grass is good and plentiful, the climate mild during the whole year, and its vicinity to the mountains is a sure guarantee that rain will always be abundant. Lying as it does under the mountains, and within easy distance of the port at present contemplated at Delagoa Bay, it will be an acquisition as an agricultural farm for tropical products. Distance from Leydenburg, about 45 miles.

No. 56. GROOTBOSCH, district Potchefstroom.—The farm Grootbosch, 4,228 morgen 200 square roods and 114 square feet (8,949.487 English acres), is situated seven hours on horseback from Potchefstroom, and eight hours on horseback from Klerksdorp. The middle wagon road from Potchefstroom to Marico runs only half an hour on horseback from the western boundary line of the farm, and on the east side the large wagon road passes. This farm was inspected for the Government of the South African Republic on the 11th April, 1865.

No. 57. SPECULATIE, district Potchefstroom.—The report of Grootbosch is applicable to this farm also. Adjoining these two farms lies the farm No. 1 on table of surveyed farms (Vogelstruispan).

No. 58. KOODOESFONTEIN, district Waterberg.—This farm is distant from Nylstroom about thirty miles north-east, and lies on the wagon road to Hanglip. It is a farm selected as far back as 1858, when good land was everywhere plentiful, by an experienced farmer, and consequently well adapted for agricultural purposes. The grass and locality are well suited for general stock purposes, and there is an abundance of water for irrigation, with plenty of strong black loamy soil ready

for the plough. Firewood is procurable in abundance, stone is ready at hand, and a small supply of useful timber can be obtained on the farm.

No. 59. WATERHOUTBOOM, district Waterberg.—This farm resembles Avondale, St. Agnes Fontein, &c., in every respect, except that the climate here is much warmer than that of the former, as it lies close under the hills sloping westwards. It is also better supplied with water for the purposes of irrigation. It is distant from them about two miles, on Mampasspruit before its junction with the Matlabas River. Distance from Nylstroom, about 53 miles.

No. 60. PETERMANN, district Waterberg.—For surveyor's report on this farm, see that of Cosmopolite and Fairfield.

No. 61. MURCHISON, district Waterberg.—The same as above.

No. 62. CALMAR, district Waterberg.—The same as above.

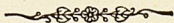
No. 63. ONVERWACHT, district Waterberg.—This farm is about 42 miles north-west from Nylstroom, to the south of the wagon road to the Matlabas River and the Tati Gold Fields. It is well supplied with water that can be used for irrigation. The soil is rich and strong, the pasturage is good, the grass being rich, sweet, and plentiful, with fine steep valleys among the hills for shelter. Firewood is abundant everywhere, and there is a good supply of useful timber on the farm, while stone of good quality is ready to the hand for building purposes.

No. 64. COSMOPOLITE, No. 65. FAIRFIELD.—These farms lie on the ground sloping east to the Magalaguin or Nyl River, and in the nature of their soil, situation, &c., are similar to one another. One of the principal roads from the Pretoria and Waterberg districts to the Limpopo and Tati Gold Fields passes through these two farms, thus insuring a good road to the ground from the district town, and from there a good road to the interior. The soil is a light and sandy loam, well adapted for the cultivation of coffee, &c., which has been tried, and does well in the Zoutpansberg district, about 60 miles due east of these farms. The grass is sweet, plentiful, and affords good pasture for cattle. There is a fair supply of water, and wood for fire is abundant, with small quantities of useful timber for farm purposes in some places, while stone is to be obtained near at hand. These two farms are distant N. by E. from Nylstroom about 83 miles, and are 17,062 English acres in extent.

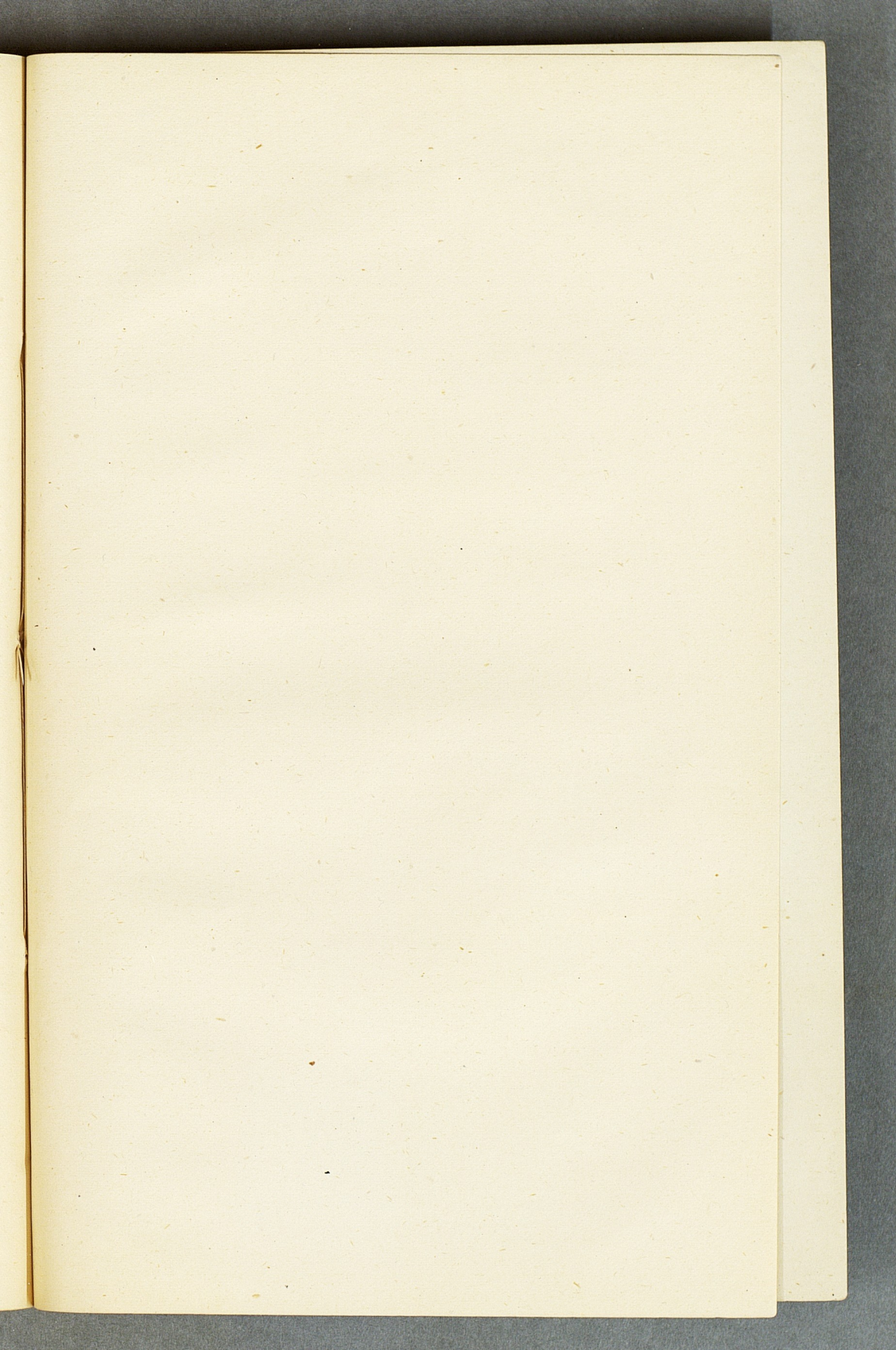
No. 66. VARKEFSFONTEIN, No. 67. PAARDEDRIFT, No. 68. ZAAGKUIL, district Waterberg.—These farms are about 40

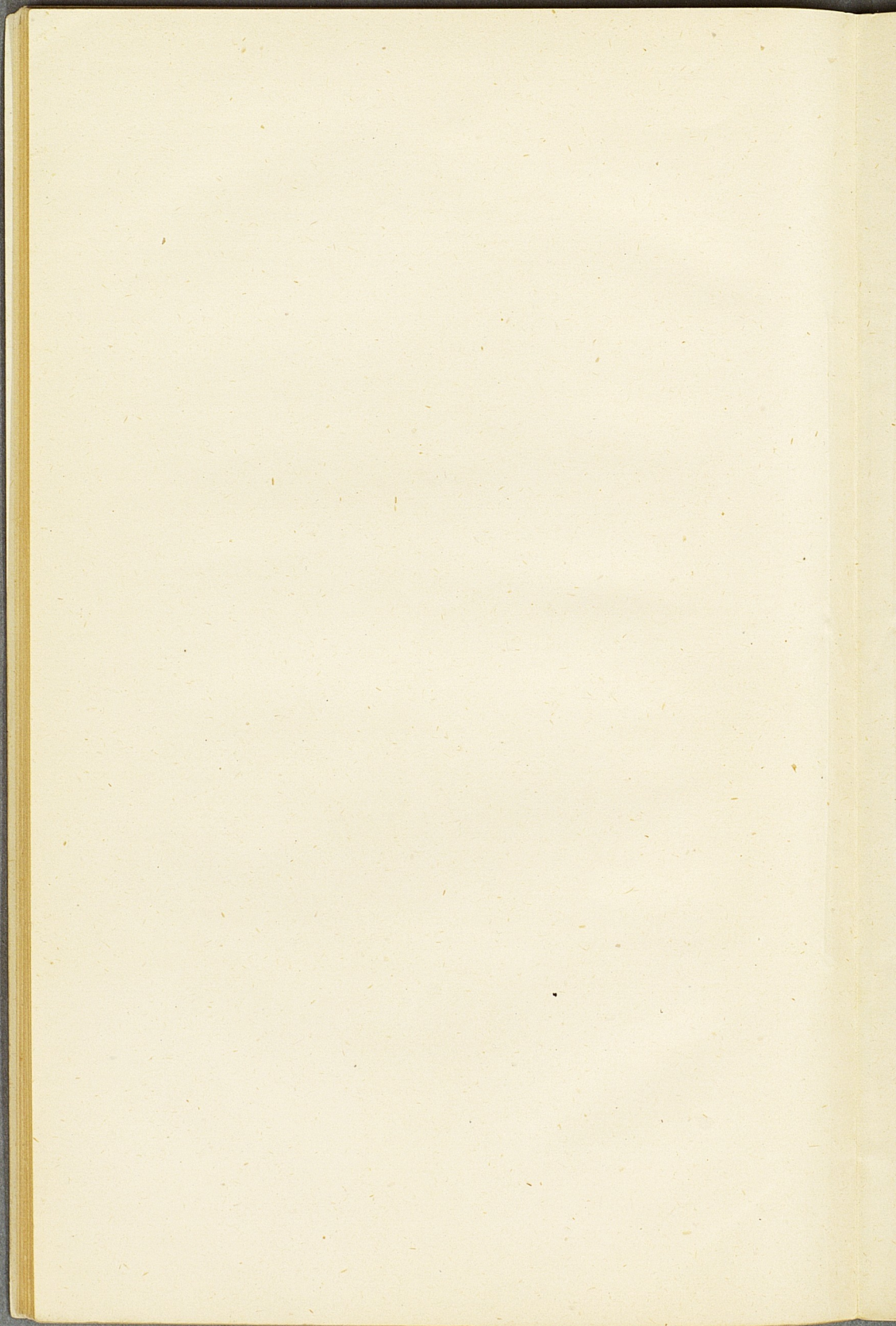
miles north by west from Nylstroom, on a high level plateau at the sources of the Palala River. The situation is open and healthy, well adapted for stock of all kinds, including horses and sheep. The grass is plentiful, and is mixed (sweet and sour), and shoots up green at intervals during the whole year, rendering it first class pasturage for stock. The water is abundant, and can be thrown over a large extent of ground. It is well adapted to the growth of all kinds of grain and other articles of farm produce. There is plenty of red sandstone in various places on the farms. Firewood is very plentiful everywhere, and a good supply of serviceable timber for wagons and farm buildings, &c., can be obtained on the ground. The farm Koodoesfontein (No. 58 in this register) adjoins Paardedrift, making the whole a large block of land. Distance from Nylstroom, about 40 miles, N. by W.

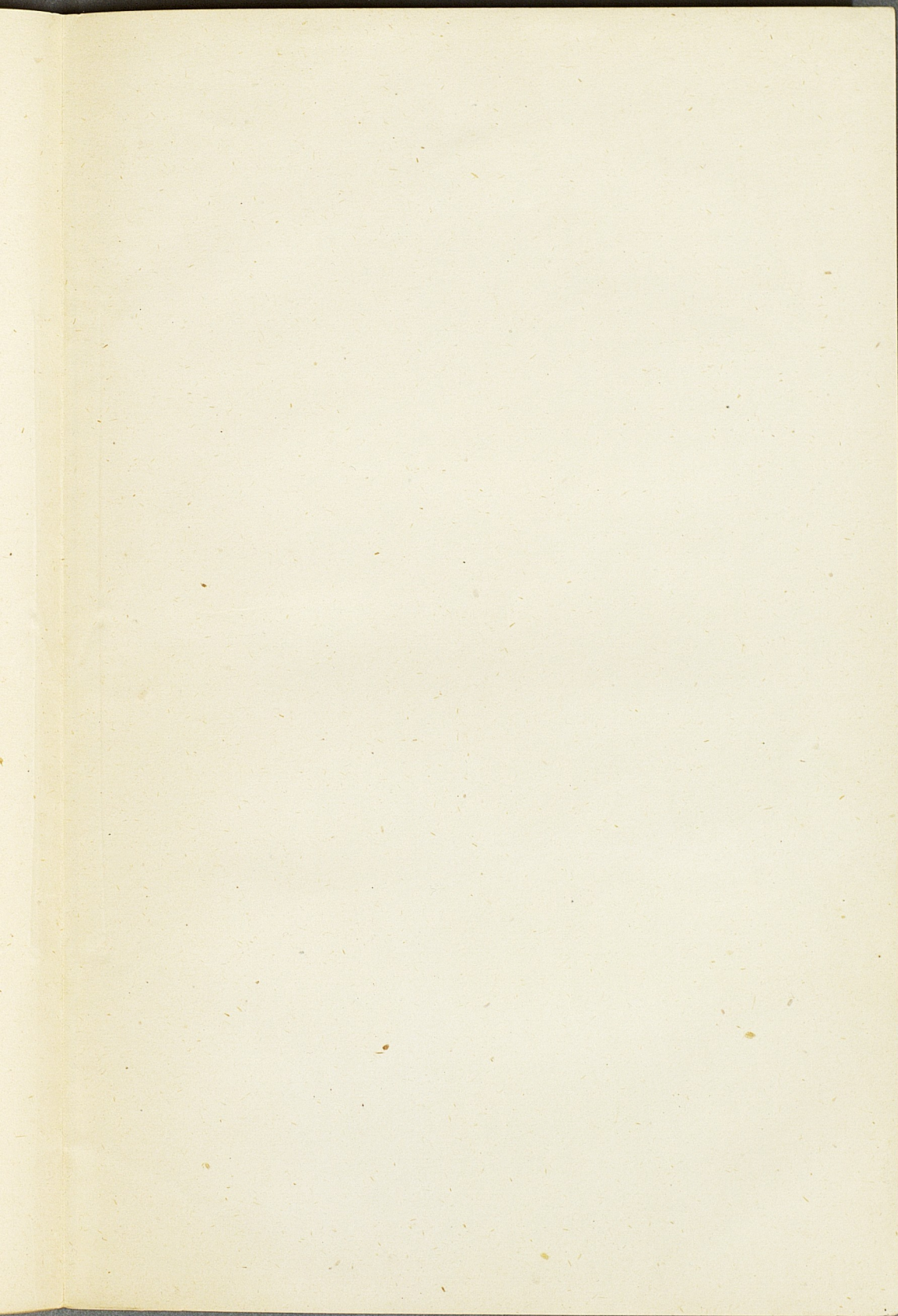
No. 69. ANTWERP, No. 70. ST. AGNES FONTEIN, No. 71. BACKWOOD. No. 72. AVONDALE, No. 73. GOEDGEDACHT, No. 74. MIMOSA PARK.—These farms, situated about 55 miles north-west from Nylstroom, on the Matlabas River, near its source, and on the road from Nylstroom to the Limpopo and the interior, are well adapted for the cultivation of all semi-tropical products, such as coffee, sugar, &c. The soil is a light red sandy loam. The climate is warm, and mild frost is hardly ever known. There is an abundance of firewood everywhere on the ground, and here and there a fair supply of timber for ordinary building purposes. The grass is good and abundant, and there is a good road from Waterberg to the ground, and from thence to the present Gold Fields on the Tati River. Sandstone is to be had at the river for building purposes. This block of farms contain 33,679 English acres.

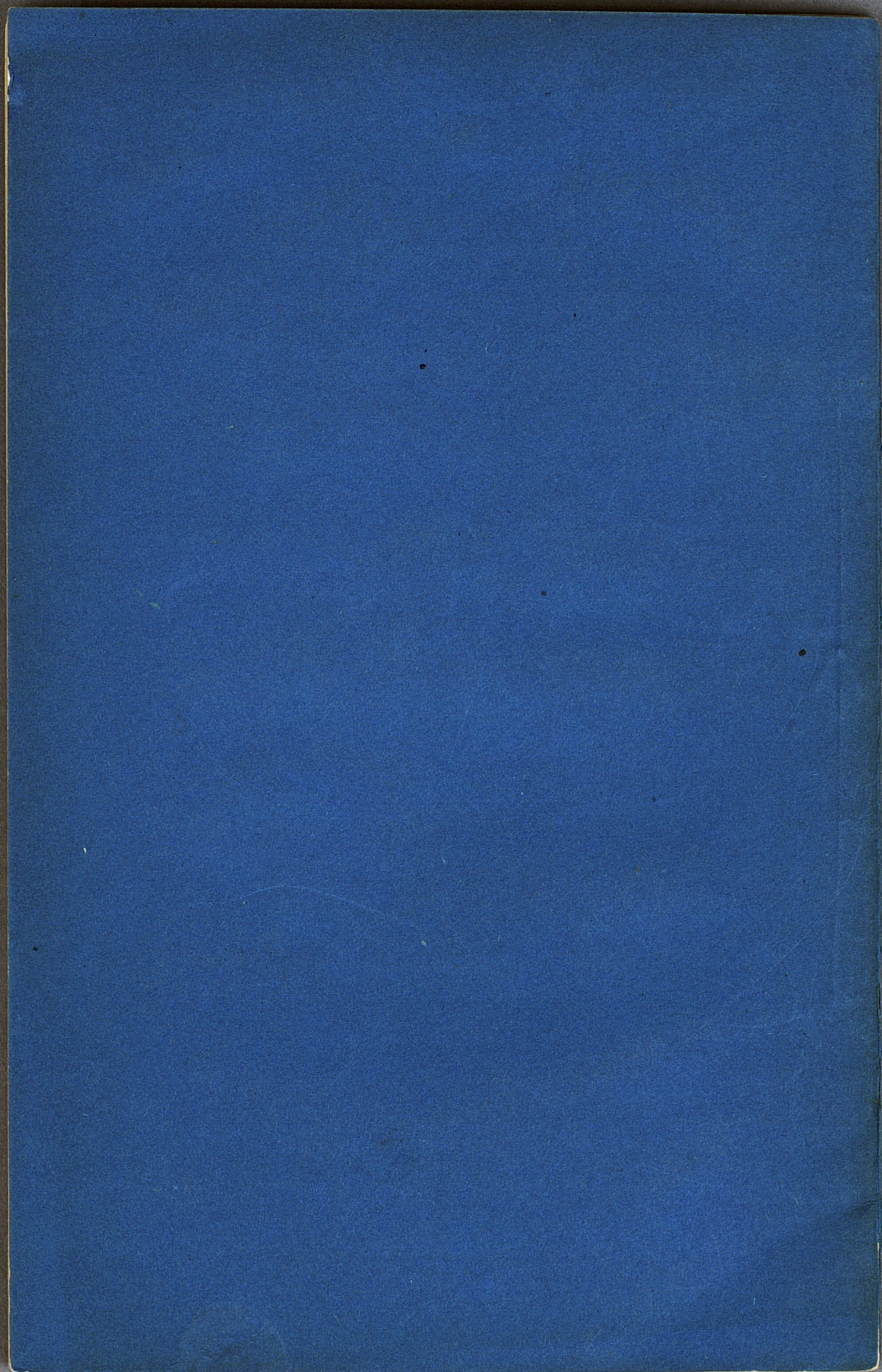


...the water of the ...
...well adapted for stock of all kinds, including horses
...The grass is ... and is mixed (sweet and
...and ... during the whole year
...for stock. The water is
...over a large extent of
...of ground. It is well adapted to the growth of all kinds of
...There is plenty of
...wood is
...on the ...
...and a good supply of saw-logs
...can be obtained
...in this
...the whole a large block
...about 40 miles N. by W.
...No. 50. ...
...No. 73. ...
...about 35 miles north-
...near its source,
...to the ... and
...of all semi-
...The soil is light
...The climate is warm and mild, frost is hardly
...There is an abundance of firewood everywhere, or
...and there is a fair supply of timber for
...The grass is good and abundant,
...and there is a good road from ... to the ...
...This
...33 1/2 English acres.









www.books2ebooks.eu