

Kungliga Operan : [Omsl.]

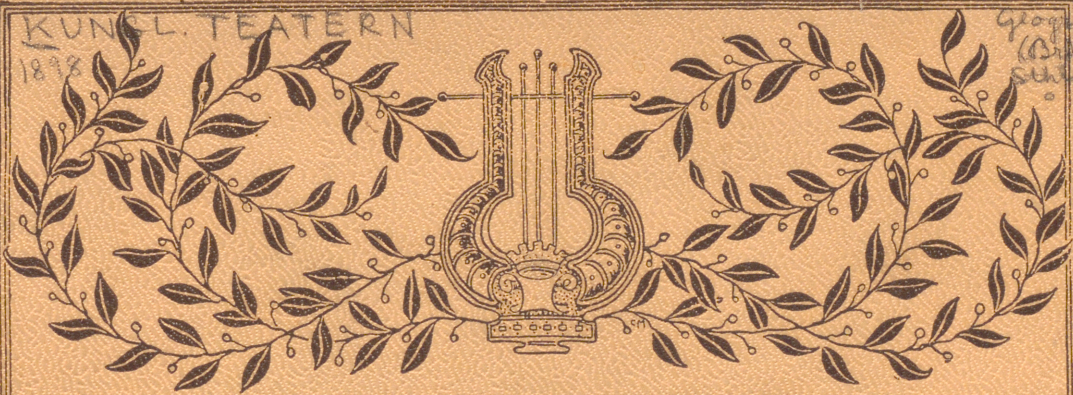
Kungliga operan

22 C e Br [Allm.] 1898, Kungliga

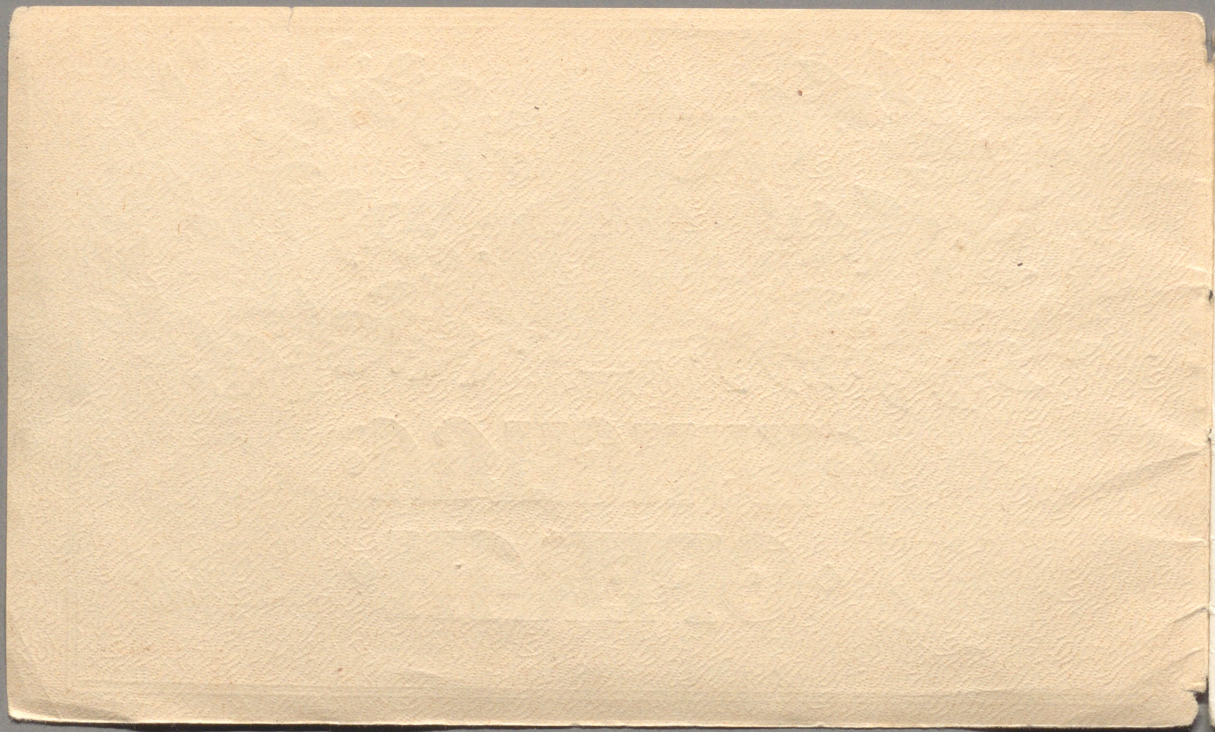


KUNSL. TEATERN
1898

Georg Su
(Dr)
Sthlm

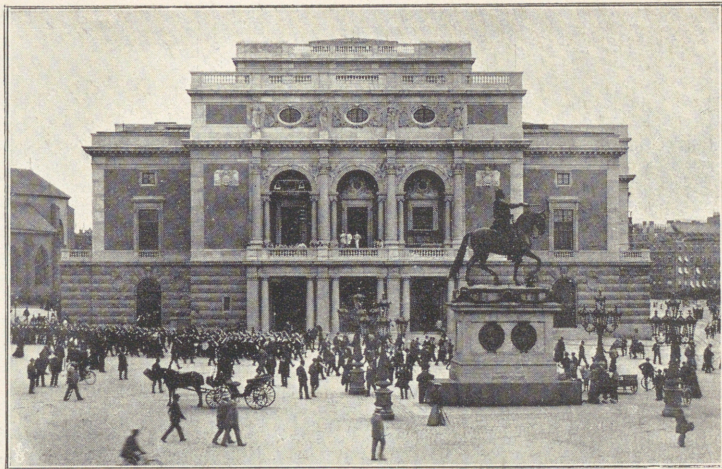


◆ KONGULGA ◆
◆ OPERAN ◆



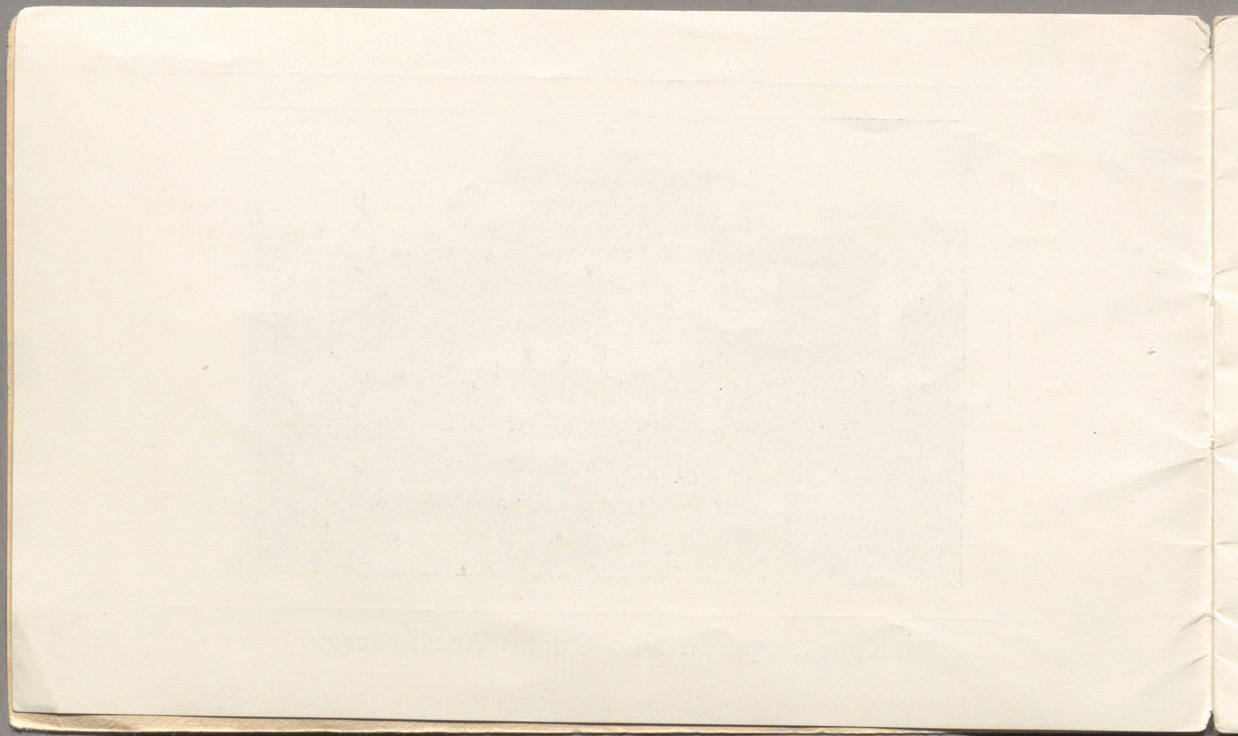
KUNGL. TEATERN

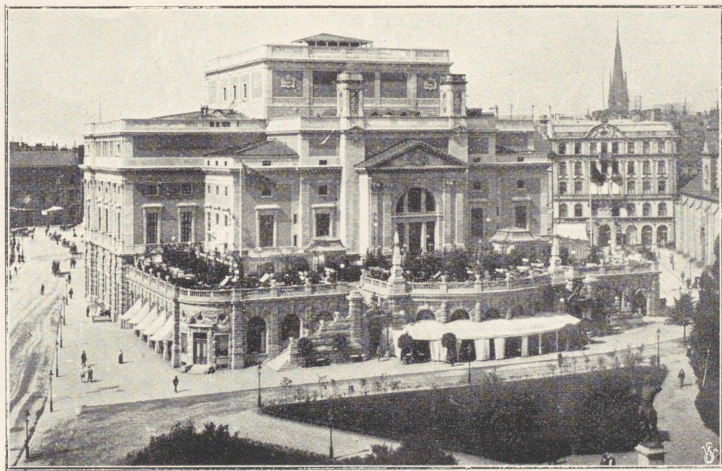
Geogr. Sv.
STHLM
(Br)
o



A Blomberg foto.

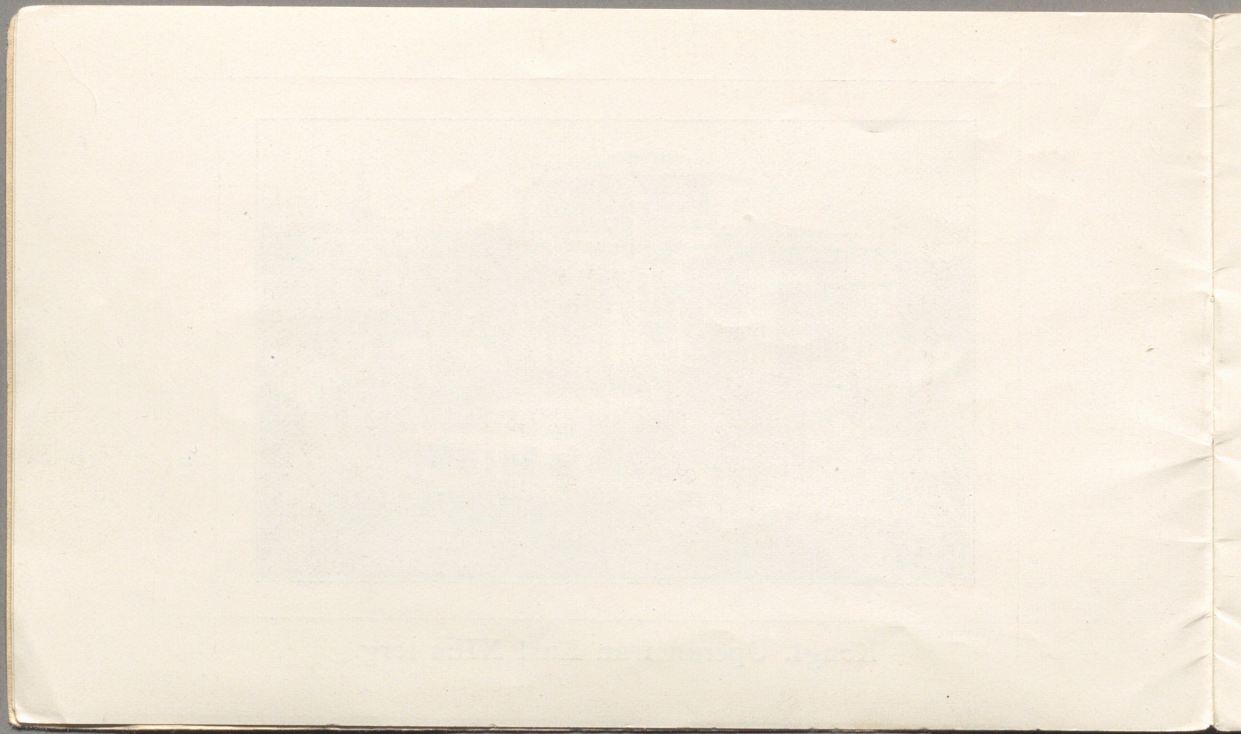
Kongl. Operan från Gustaf Adolfs torg.

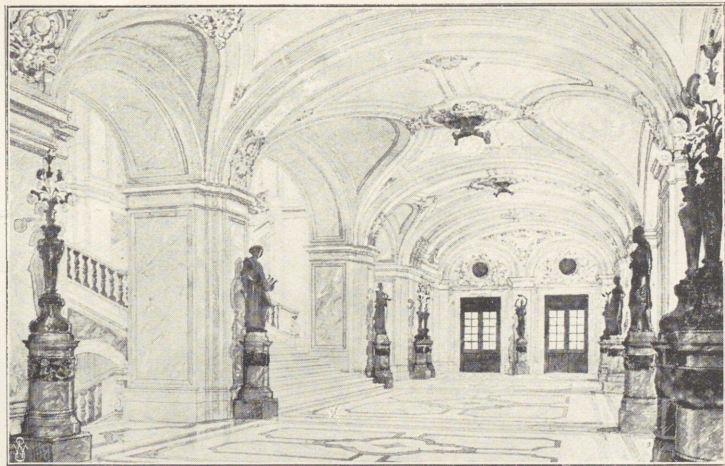




A. Blomberg foto.

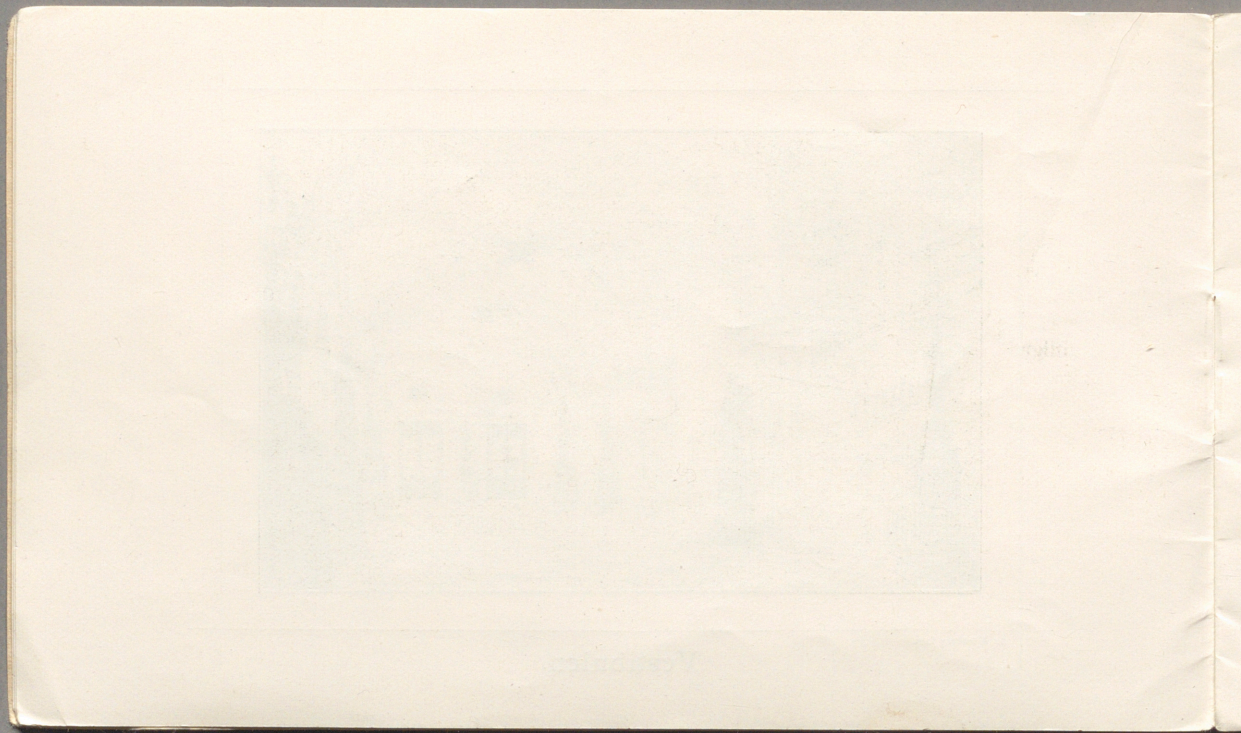
Kongl. Operan från Karl XII:s torg.

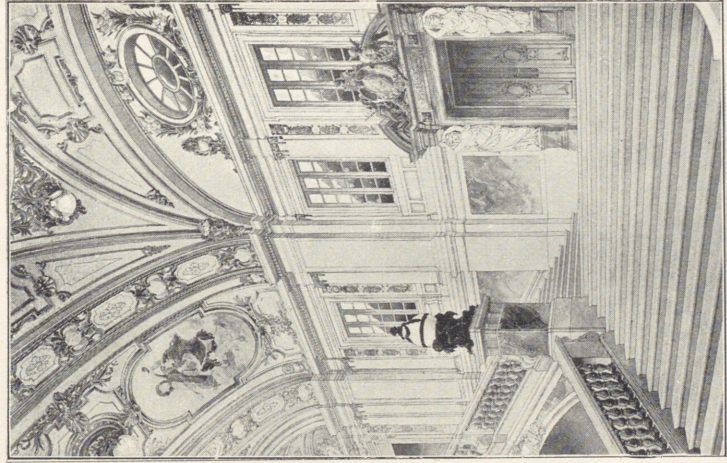




A. Blomberg foto.

Vestibulen.

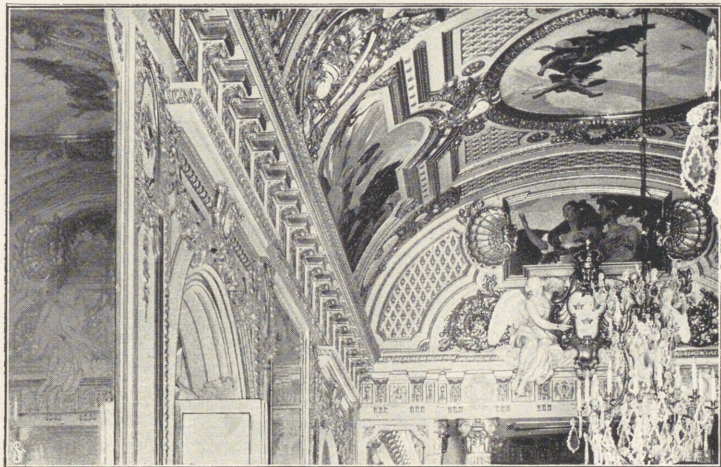




A. Blumberg foto.

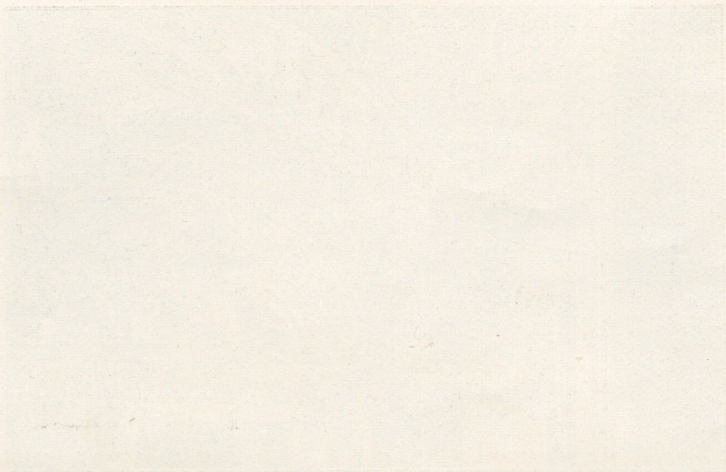
Stora trappuppgången.



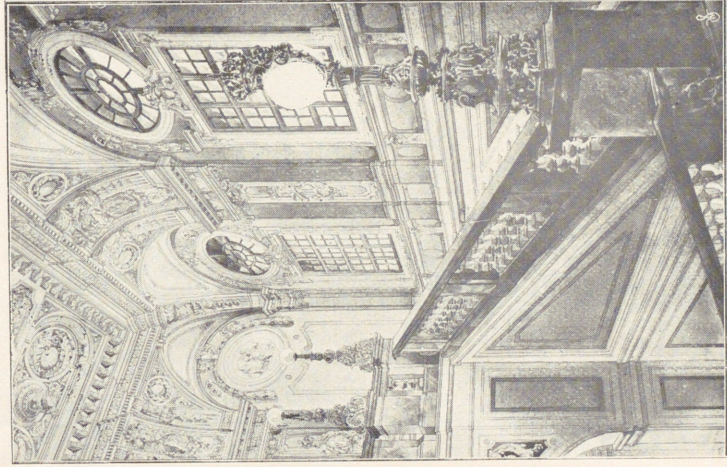


A. Blomberg foto.

Takdekoration i H. M. Konungens rum.

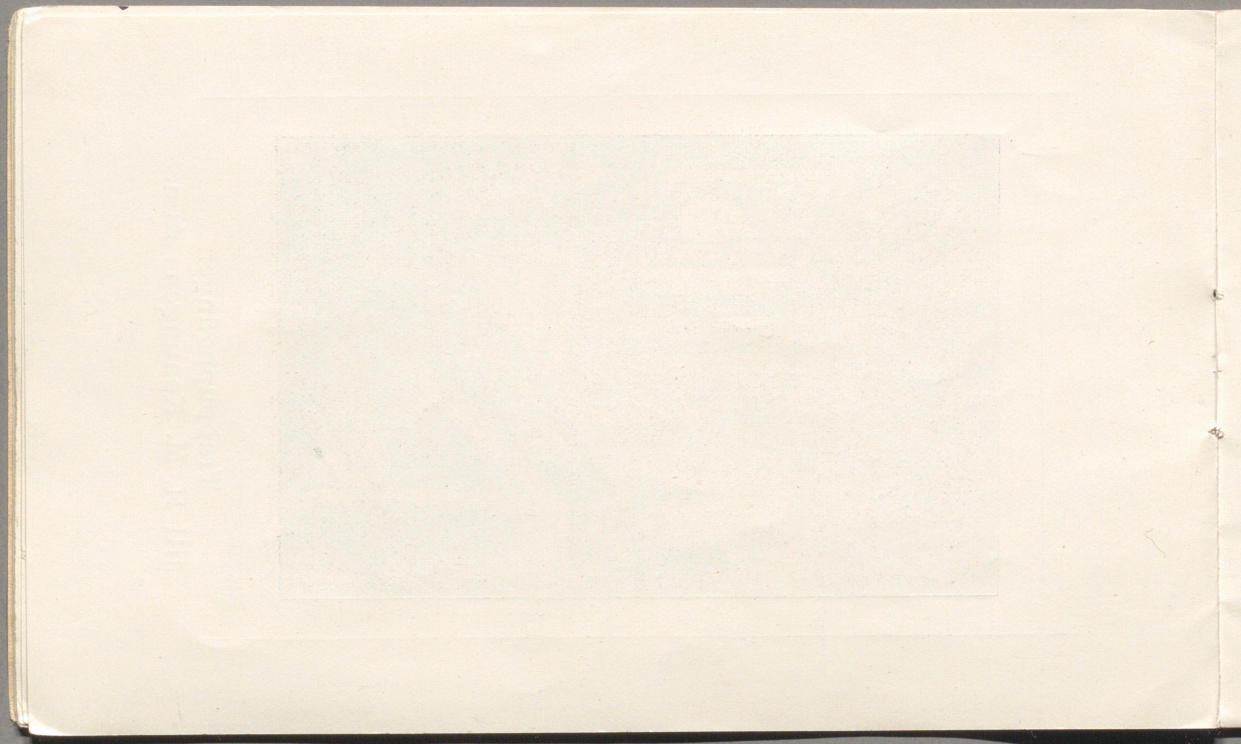


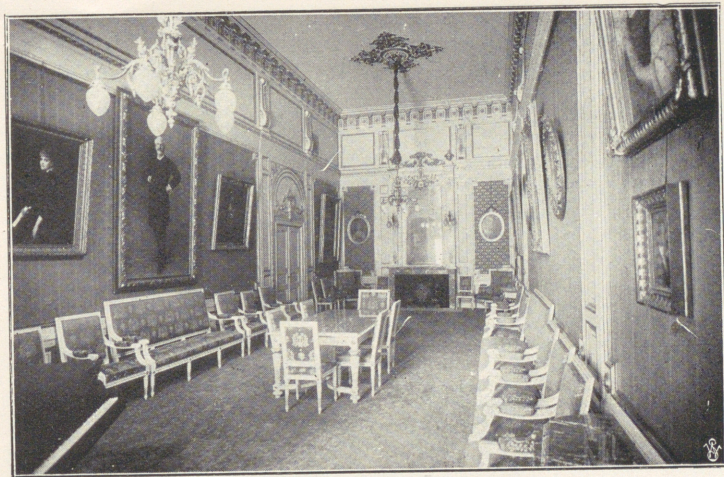
Faint, illegible text or markings at the bottom of the page, possibly a signature or a date.



A. Blomberg foto.

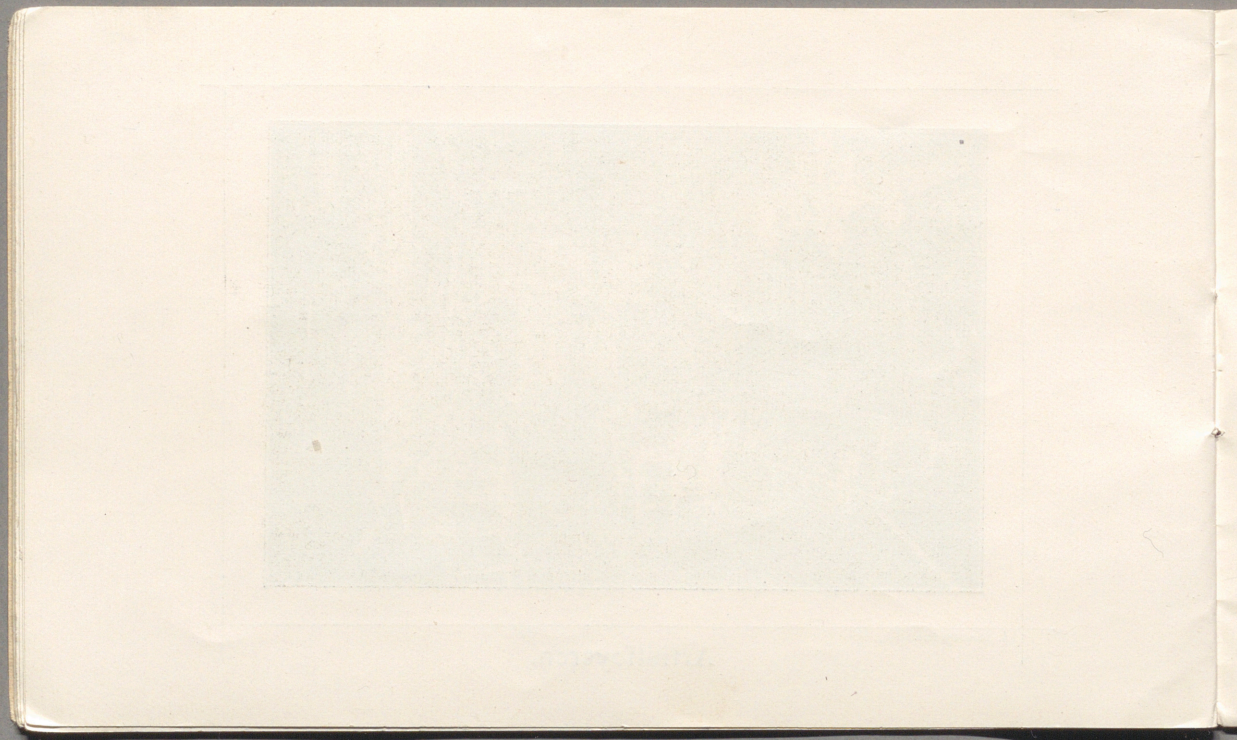
Trappuppgången
till H. M. Konungens rum.

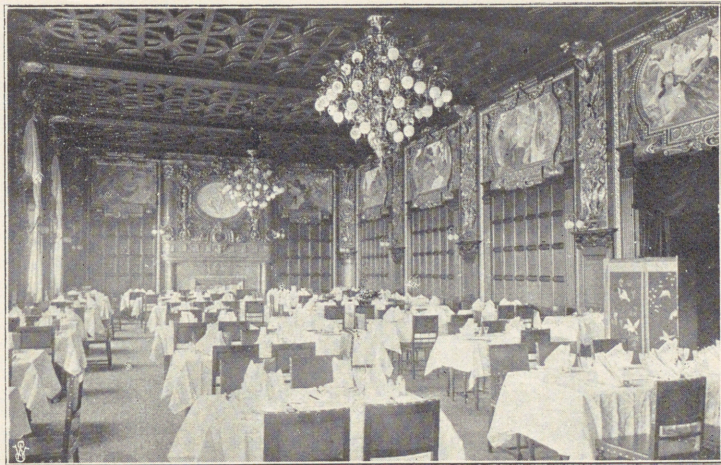




A. Blomberg foto.

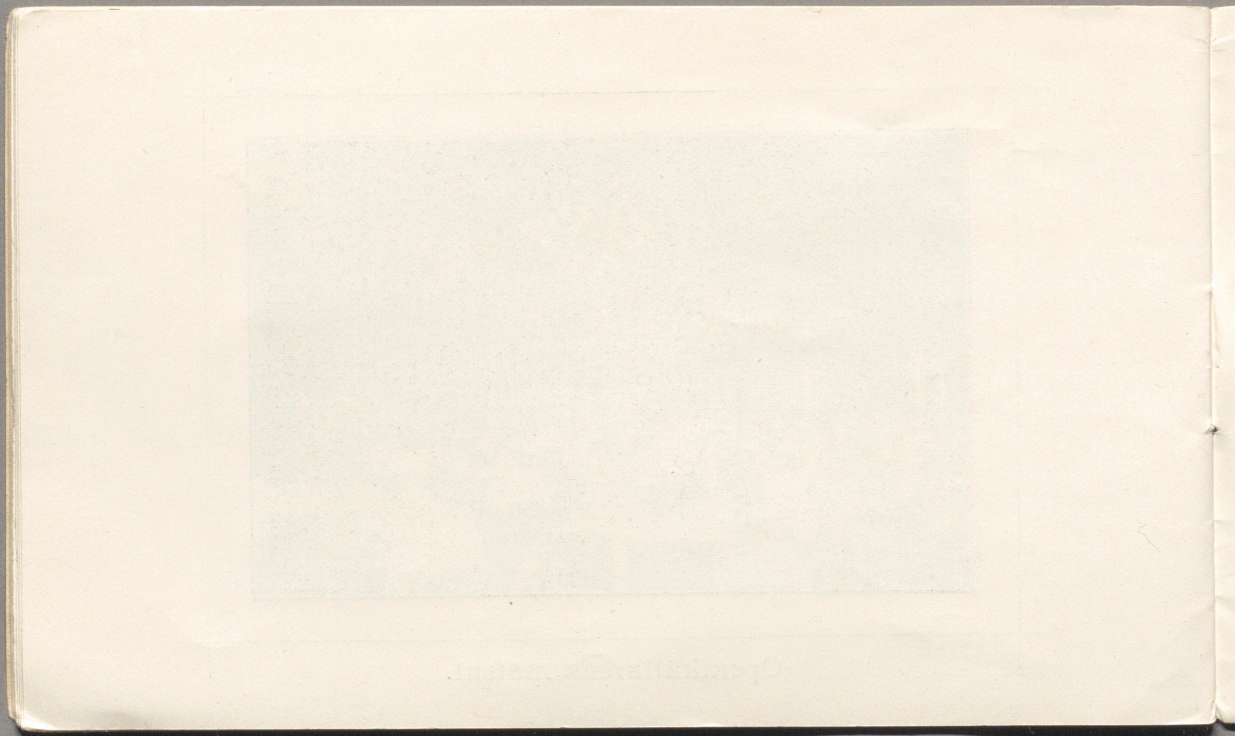
Artistfoyeren.

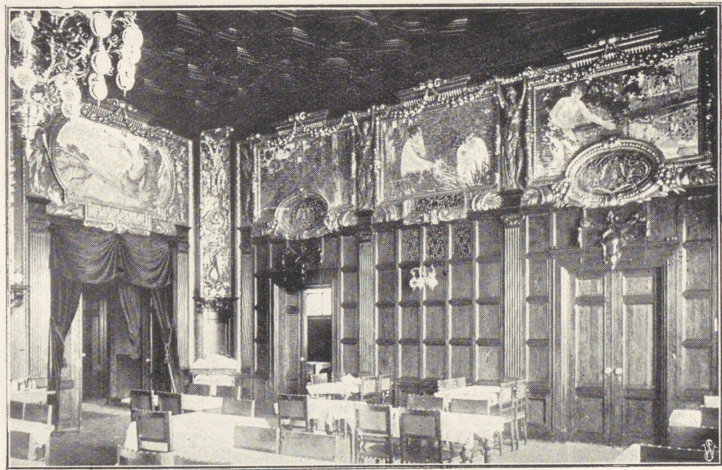




A. Blomberg foto.

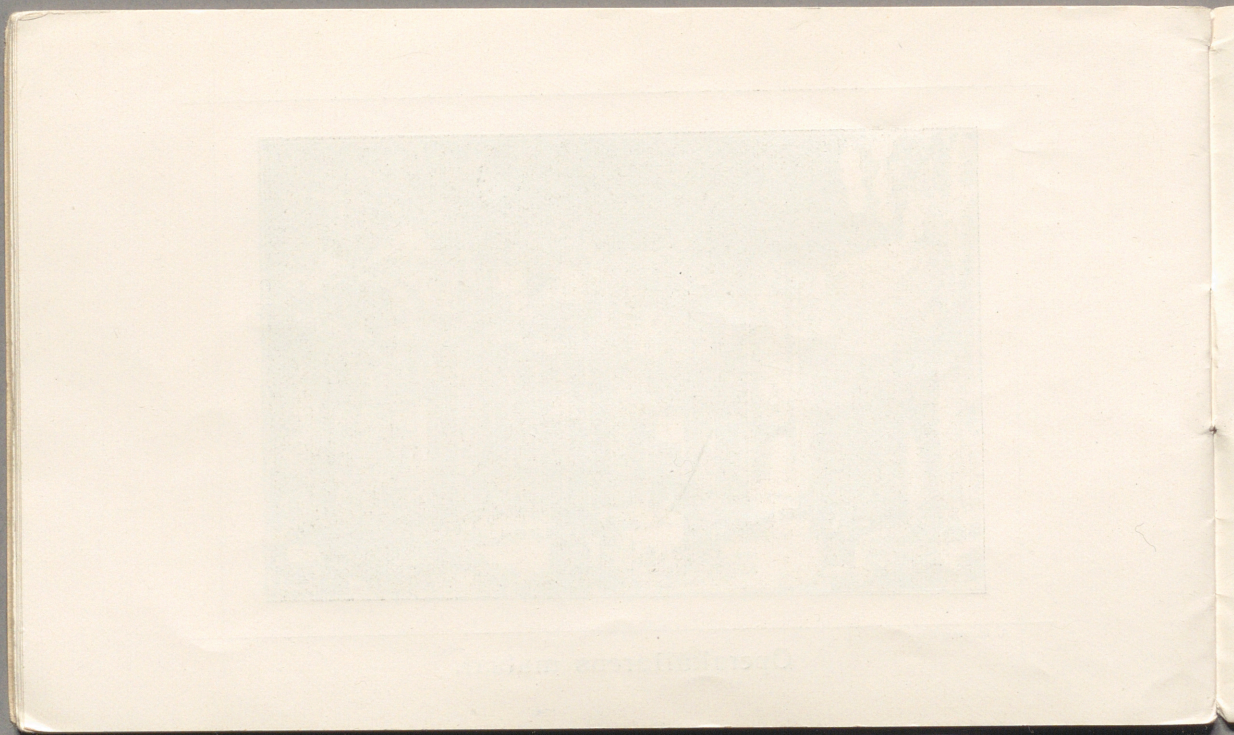
Operakällarens matsal.

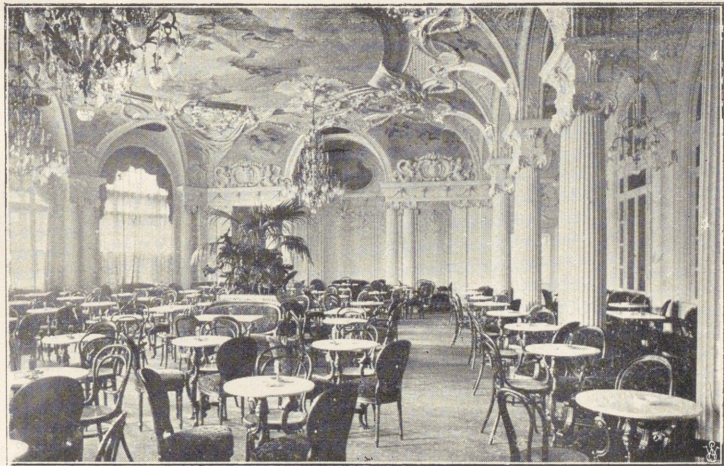




A. Blomberg foto

Operakällarens matsal.





A. Blumberg foto.

Operakällarens kafé.

Andréens Boktryckeri - A. B. 1896

