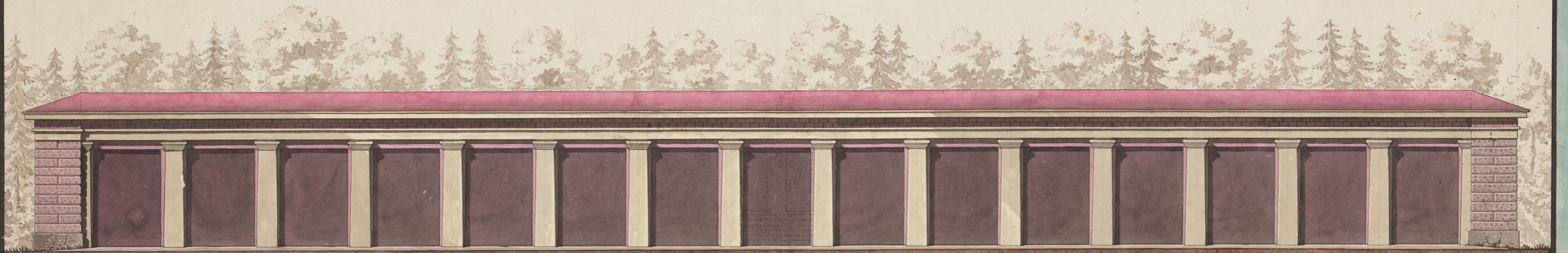
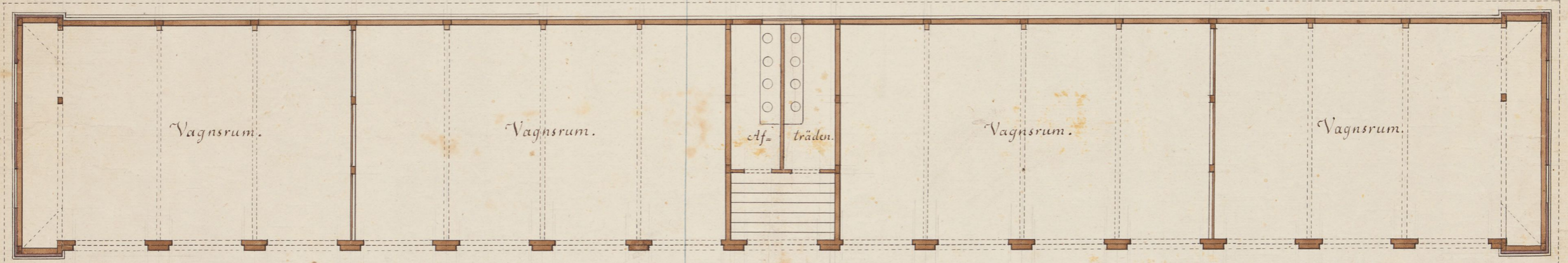


Project til Nytt Vagnshus vid Rosersbergs Slott.

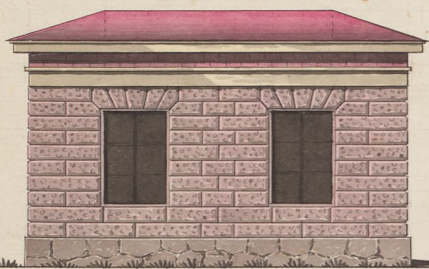


Framsidan at Stallgården.

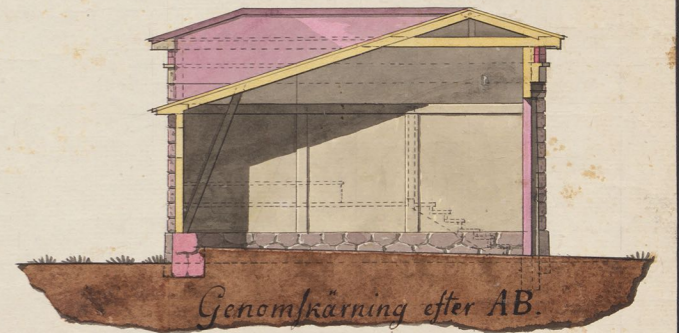
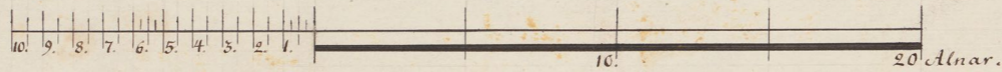
A



B



Ena Gaveln.



Genomskärning efter AB.

Tab: XXXXVIII.

G:af Sillén 1810.



$$t = 3d + u = 2d + f = 4d. = s = 9d.$$

$$g^3 + 3g^2f + 3gf^2 + f^3$$

Slutat i Uppsala den 13 Februarü 1810.

