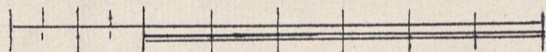
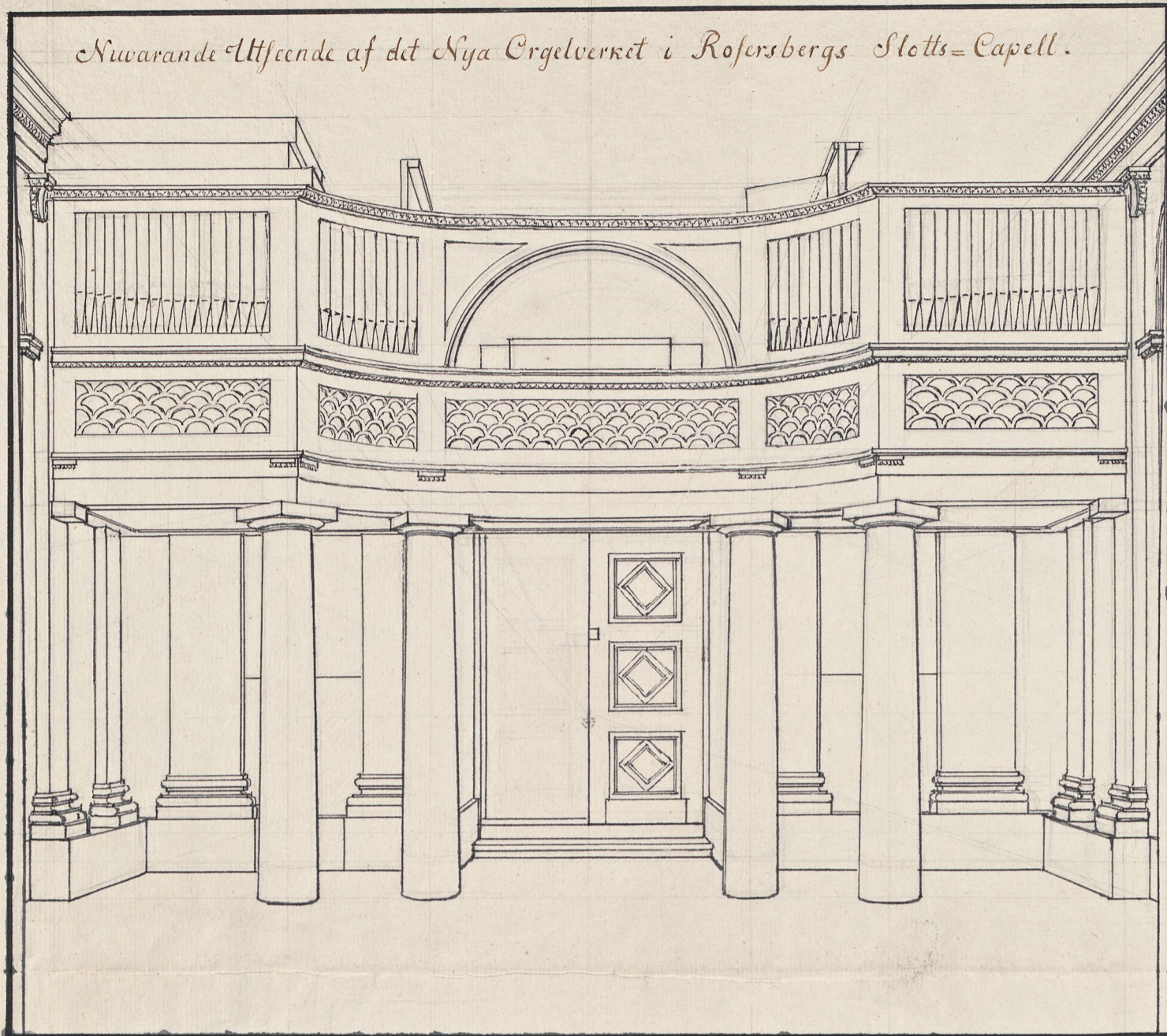


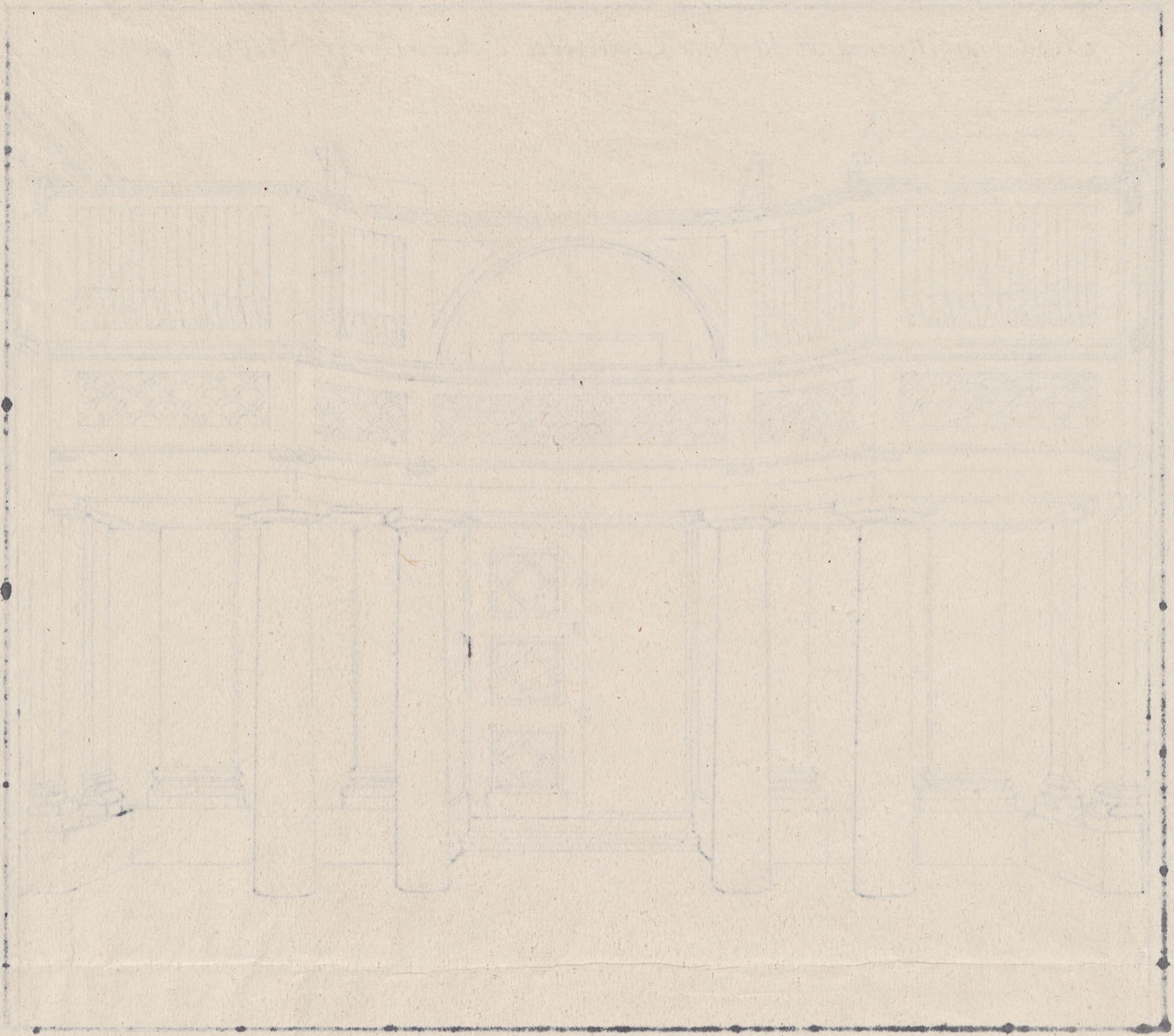
Nuvarande Utseende af det Nya Orgelverket i Rosersbergs Slotts=Capell.



Tab: LXXIII.

Graf Sillén 1814.

meg



$t = 12 + u = 12 = s = b2$. Slutad $\cdot g^3 + 3g^2f + 3gf^2 + f^3$

Slutad i Stockholm den 15 Octob. 1814.



99-2417938-0